

## Product datasheet for **RC205484**

### **GCNF (NR6A1) (NM\_001489) Human Tagged ORF Clone**

#### **Product data:**

Product Type:	Expression Plasmids
Product Name:	GCNF (NR6A1) (NM_001489) Human Tagged ORF Clone
Tag:	Myc-DDK
Symbol:	GCNF
Synonyms:	CT150; GCNF; GCNF1; hGCNF; hRTR; NR61; RTR
Mammalian Cell Selection:	Neomycin
Vector:	pCMV6-Entry (PS100001)
E. coli Selection:	Kanamycin (25 ug/mL)



[View online »](#)

**ORF Nucleotide Sequence:**

>RC205484 representing NM\_001489  
 Red=Cloning site Blue=ORF Green=Tags(s)

TTTTGTAATACGACTCACTATAGGGCGGCCGGGAATTCGTCGACTGGATCCGGTACCGAGGAGATCTGCC  
 GCC**CGGATCGCC**

ATGGAGCGGGACGAACCGCCGCTAGCGGAGGGGAGGCGGGGGGCTCGGCGGGTTCCTGGAGCCTC  
 CCGCCGCGCTACCTCCGCGCCGCGCAACGGTTTCTGTAGGATGAATTGGCAGAGCTTGACCCAGGCAC  
 TAATGATCGGGCTGAACAACGAACCTGTCTCATTGTGGGGACCGCTACAGGCTTGACTATGGGATC  
 ATCTCTGTGAGGGCTGCAAAGGGTTTTCAAGCGGAGCATTGCAACAAACGGGTATATCGATGCAGTC  
 GTGACAAGAACTGTGTCATGTCTCGGAAGCAGAGGAACAGGTGCCAGTACTGCCGCTGCTCAAATGCC  
 CCAGATGGGGATGAACCGGAAGGCTATCAGAGAAGATGGCATGCCTGGAGGCCGAATAAGAGCATTGGG  
 CCAGTCCAGATATCGGAAGAAGAAATCGAAAGGATCATGTCTGGGAGGAGTTTGGGAAGAGGCCAATC  
 ACTGGAGCAACCATGGTATAGTGACCACAGTCCCTGGGAACAGGGCTTCGGAGAGCAACCAGCCCTC  
 ACCAGGCTCCACTGTCTTCCAGTCTGTGGAAGTGAATGGATTCATGGCTTCAGGGAACAGTACATG  
 GGAAATGTCTGTGCTCCACATTACCAATATATACCGCACCTTTTGTAGCTATTCTGGCCACTCACCCTTC  
 TGCCCCAACAAAGCTCGCAGCCTGGATCCCCAGTCATACAGTCTGATTACCCAGCTGTTATCAGCCGAGGA  
 CCTGGAACATTGGGCACGCCCATGTTGATTGAAGATGGATACGCTGTGACACAGGCAGAACTATTTGCC  
 CTGCTTTGCCGCTGGCCGACGAGCTGCTTTAGGCAGATTGCCTGGATCAAGAAACTGCCTTTCTTCT  
 GCGAGCTCTCAATCAAGGATTACACGTGCCTCTTGTAGCTCTACGTGGCAGGAGCTAATCTGTCTTCT  
 CCTCACCGTTTACAGCAAGCAGATCTTTGGGAACTGGCTGATGCTACTGCCAAGTACTCGCCCTCCGAT  
 GAAGAATAACAGTAAAGTCAAGCAACGAGGAGTATGCTTGCATGAAAGCAATTAACCTCTAAATCAAGAT  
 CAGGGGTCTGACCAGTGCCTCACAGCTGGAACAATTGAATAAACGATACTGGTACATTTGCCAGGATTTT  
 ACTGAATATAAATACACACATCAGCCGAACCGCTTTCCTGATCTCATGATGTGCTTACCTGAGATTCGAT  
 ATATTGCAGGAAAGATGGTGAATGTGCCCTGGAGCAGCTGCCCTCCTCTTTAAGGTGGTGTGCATTC  
 CTGCAAGACCAGTGTGGGCAAGGAA

**ACCGGT**ACGCGGCCGCTCGAGCAGAACTCATCTCAGAAGAGGATCTGGCAGCAATGATATCCTGGATT  
 ACAAGGATGACGACGATAAGGTTTAA

**Protein Sequence:**

>RC205484 representing NM\_001489  
 Red=Cloning site Green=Tags(s)

MERDEPPPSGGGGGGSAGFLEPPAALPPPRNGFCQDELAELDPGTNDRAEQRTCLICGDRATGLHYGI  
 ISCEGCKGFFKRSICNKRVYRCSRDKNCVMSRKQRNRCQYCRLLKCLQMGMMNRKAIREDGMPGGRNKSIG  
 PVQISEEEIERIMSGQEFEEEEANHWSNHGSDHSSPGNRAESNQPSPGSTLSSRSVELNGFMFREQYM  
 GMSVPPHYQYIPLHFSYSGHSPLLPQARSLLDPQSYSLIHQLLSAEDLEPLGTPMLIEDGYAVTQAE LFA  
 LLCRLADELLFRQIAWIKKLPFFCEL SIKDYTCLLSSTWQELILLSSLTVYSKQIFGELADVTAKYSPSD  
 EELHRFSDEGMEVIERLIYLYHKFHQLKVSNEEYACMKAINFLNQDIRGLTSASQLEQLNKRYWYICQDF  
 TEYKYTHQPNRFPDMMCLPEIRYIAGKMVNVPLEQLPLLFKVVLHSCKTSVGKE

**TR**TRPLEQKLISEEDLAANDILDYKDDDDKV

**Chromatograms:**

[https://cdn.origene.com/chromatograms/mg2981\\_h02.zip](https://cdn.origene.com/chromatograms/mg2981_h02.zip)

**Restriction Sites:**

Sgfl-MluI

**Cloning Scheme:**

Cloning sites used for ORF Shutting:


**ACCN:** NM\_001489

**ORF Size:** 1425 bp

**OTI Disclaimer:** The molecular sequence of this clone aligns with the gene accession number as a point of reference only. However, individual transcript sequences of the same gene can differ through naturally occurring variations (e.g. polymorphisms), each with its own valid existence. This clone is substantially in agreement with the reference, but a complete review of all prevailing variants is recommended prior to use. [More info](#)

**OTI Annotation:** This clone was engineered to express the complete ORF with an expression tag. Expression varies depending on the nature of the gene.

**Components:** The ORF clone is ion-exchange column purified and shipped in a 2D barcoded Matrix tube containing 10ug of transfection-ready, dried plasmid DNA (reconstitute with 100 ul of water).

- Reconstitution Method:**
1. Centrifuge at 5,000xg for 5min.
  2. Carefully open the tube and add 100ul of sterile water to dissolve the DNA.
  3. Close the tube and incubate for 10 minutes at room temperature.
  4. Briefly vortex the tube and then do a quick spin (less than 5000xg) to concentrate the liquid at the bottom.
  5. Store the suspended plasmid at -20°C. The DNA is stable for at least one year from date of shipping when stored at -20°C.

**RefSeq:** [NM\\_001489.5](#)
**RefSeq Size:** 1903 bp

**RefSeq ORF:** 1428 bp

**Locus ID:** 2649

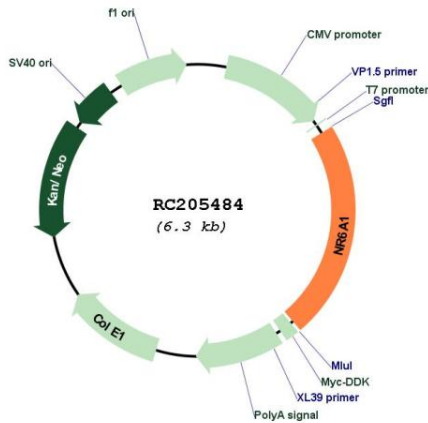
**UniProt ID:** [Q15406](#)
**Cytogenetics:** 9q33.3

**Protein Families:** Druggable Genome, ES Cell Differentiation/IPS, Transcription Factors

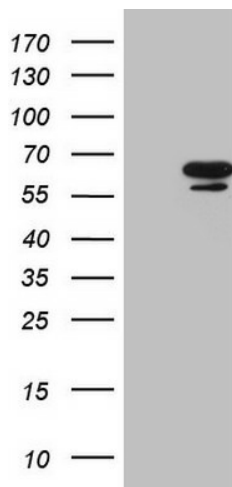
**MW:** 53.7 kDa

**Gene Summary:** This gene encodes an orphan nuclear receptor which is a member of the nuclear hormone receptor family. Its expression pattern suggests that it may be involved in neurogenesis and germ cell development. The protein can homodimerize and bind DNA, but in vivo targets have not been identified. Alternate splicing results in multiple transcript variants.[provided by RefSeq, Jun 2013]

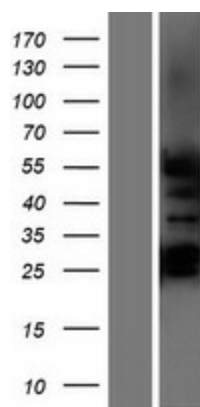
**Product images:**



Circular map for RC205484



HEK293T cells were transfected with the pCMV6-ENTRY control (Cat# [PS100001], Left lane) or pCMV6-ENTRY NR6A1 (Cat# RC205484, Right lane) cDNA for 48 hrs and lysed. Equivalent amounts of cell lysates (5 ug per lane) were separated by SDS-PAGE and immunoblotted with anti-NR6A1 (Cat# [TA809501])(1:2000). Positive lysates [LY419899] (100ug) and [LC419899] (20ug) can be purchased separately from OriGene.



Western blot validation of overexpression lysate (Cat# [LY419899]) using anti-DDK antibody (Cat# [TA50011-100]). Left: Cell lysates from untransfected HEK293T cells; Right: Cell lysates from HEK293T cells transfected with RC205484 using transfection reagent MegaTran 2.0 (Cat# [TT210002]).