

Product datasheet for **RC205482**

AJUBA (NM_032876) Human Tagged ORF Clone

Product data:

Product Type:	Expression Plasmids
Product Name:	AJUBA (NM_032876) Human Tagged ORF Clone
Tag:	Myc-DDK
Symbol:	AJUBA
Synonyms:	JUB
Mammalian Cell Selection:	Neomycin
Vector:	pCMV6-Entry (PS100001)
E. coli Selection:	Kanamycin (25 ug/mL)



[View online »](#)

ORF Nucleotide Sequence:

>RC205482 ORF sequence
 Red=Cloning site Blue=ORF Green=Tags(s)

TTTTGTAATACGACTCACTATAGGGCGGCCGGGAATTCGTCGACTGGATCCGGTACCGAGGAGATCTGCC
 GCC**CGGATCGCC**

ATGGAGCGGTTAGGAGAGAAAGCCAGTCGCTGCTGGAGAAGTTCGGCCGAGAAAGGGTGAATCTAGCC
 GGTCTGGGTCTGACGGGACCCCCGGGCCGGCAAGGGGCCCTAAGTGGGTTGGGGGACCTAGGAAGTC
 AGGGCCCCGAGGAGCTACTGGGGACCTGGGGATGAGCCGTTGGAGCCGGCCCGGAGCAAGGTTCCCTG
 GACGCTGAGCGAAATCAGCGCGGCTCCTTTGAGGCGCCGCTACGAAGGCTCTTTCCCGCGGGCCGC
 CGCCACCCGGGCTTGCTCTACCTCAGTCGTTGCCCCGATTTTCGGCTGGAGCCACGGCCCCGGC
 CCTCAGCCCCGCTCTAGCTTCGCCAGTAGCTCGGCCAGCGACGCGAGCAAGCCGTCAGCCCCGGGGC
 AGCCTGCTGCTGGACGGGGCGGGGGCTGGCGGAGCTGGAGGTAGCCGGCCCTGCAGCAATCGACCAGCG
 GCATCAGCATGGGCTACGACCAGCGCCACGGGAGCCCTTGCCAGCGGGCCGCTGCTGTTGGCCACC
 CCTGGCCGGAGCACCGGCAGGCTATTCTCCGGAGGGGTCCCGTCCGCTACCCGGAGCTCCACGCCGCC
 CTGGACCGATTGTACGCTCAGCGCCCGCGGGGTTTCGGCTGCCAGGAAAGCCGCTACTGTATCCCCCGG
 CCCTGGGCAGCCCTGGAGCTCTAGCCGGGGCCGGAGTGGGAGCGCGGGGCCCTTGGAGAGACGGGGGGC
 GCAACCCGGACGACACTCTGTGACCCGGTACGGGGACTGCGCCGTGGGCGCCCGGTACCAGGACGAGCTA
 ACAGCTTTGCTTCGCTGACGGTGGCACCCGGTGGGCGAGAAGCCGGAGCCCGCGGAGAACCCTCGGGGA
 TTGAGCCGTCGGGTCTGGAGGAGCCACCAGGTCCTTTTCGTTCCGGAGGCCCGCGGGCCCGGATGCGGGA
 GCCAGAGGCCAGGGAGGACTACTTCGGCACCTGTATCAAGTGAACAAAGGCATCTATGGGAGAGCAAT
 GCCTGCCAGGCCCTGGACAGCCTCTACCACCCAGTGCCTTTGTTGCTGCTCTGTGGGCGAATTTGC
 GTTGCAAGGCTTTCTACAGTGTCAATGGCTCTGTGTACTGTGAGGAAGATTATCTGTTTTACGGGTTTCA
 GGAGGCAGCTGAGAAATGCTGTGCTGTGGTCACTTGATTTTGGAGAAGATCCTACAAGCAATGGGGGAA
 TCCTATCATCCAGGCTGTTTCCGATGCATTGTTTGAACAAGTGCCTGGATGGCATCCCCCTCACAGTGG
 ACTTCTCCAACCAAGTATACTGTGTACCGACTACCACAAAAATTATGCTCCTAAGTGTGCAGCCTGTGG
 CCAACCCATCCTCCCCTCTGAGGGCTGTGAGGACATCGTGGGGTATATCCATGGACCGGGATTATCAC
 TTTGAGTGTACCACTGTGAGGACTGCCGGATGCAGCTGAGTGTGAGGAAGGCTGCTGCTGTTCCCTC
 TGGATGGGCACTTGCTCTGCCATGGTTGCCACATGCAGCGGCTCAATGCCCGACAACCCCTGCCAACTA
 TATC

ACGCGTACGCGGCCGCTCGAGCAGAAACTCATCTCAGAAGAGGATCTGGCAGCAAATGATATCCTGGATT
 ACAAGGATGACGACGATAAGGTTTAA

Protein Sequence:

>RC205482 protein sequence
 Red=Cloning site Green=Tags(s)

MERLGEKASRLLEKFRRKGESSRSRSGDTPGPGKGRLSGLGGPRKSGPRGATGGPGDEPLEPAREQGS
 DAERNQRGSFEAPRYEGSFPAGPPPTRALPLPQSLPPDFRLEPTAPALSPRSSFASSSASDASKPSSPRG
 SLLLDGAGAGGAGSRPCSNRTSGISMGYDQRHGSPLPAGPCLFGPPLAGAPAGYSPGGVPSAYPELHAA
 LDRLYAQRPAFGQCQESRHSYPPALGSPGALAGAGVGAAGPLERRGAQPGRHSVTGYGDCAVGARYQDEL
 TALLRLTVGTGGREAGARGEPGIEPSGLEPPGPFVPEAARARMREPEAREDYFTCIKCNKIYGQSN
 ACQALDSL YHTQCFVCCSCGRTL RCKAFYSVNGSVYCEEDYLFSGFQEAEEKCCVCGHLILEKILQAMGK
 SYHPGCFRIVCNKCLDGIPFTVDFSNQVYCVTDYHKNYAPKCAACGQPILPSEGCEDIVRVISMDRDYH
 FECYHCEDCRMQLSDEEGCCCFPLDGHLLCHGCHMQRLNARQPPANYI

TRTRPLEQKLISEEDLAANDILDYKDDDDKV

Chromatograms:

https://cdn.origene.com/chromatograms/mk6269_h02.zip

Restriction Sites:

Sgfl-Mlul

Cloning Scheme:


ACCN: NM_032876

ORF Size: 1614 bp

OTI Disclaimer: The molecular sequence of this clone aligns with the gene accession number as a point of reference only. However, individual transcript sequences of the same gene can differ through naturally occurring variations (e.g. polymorphisms), each with its own valid existence. This clone is substantially in agreement with the reference, but a complete review of all prevailing variants is recommended prior to use. [More info](#)

OTI Annotation: This clone was engineered to express the complete ORF with an expression tag. Expression varies depending on the nature of the gene.

Components: The ORF clone is ion-exchange column purified and shipped in a 2D barcoded Matrix tube containing 10ug of transfection-ready, dried plasmid DNA (reconstitute with 100 ul of water).

- Reconstitution Method:**
1. Centrifuge at 5,000xg for 5min.
 2. Carefully open the tube and add 100ul of sterile water to dissolve the DNA.
 3. Close the tube and incubate for 10 minutes at room temperature.
 4. Briefly vortex the tube and then do a quick spin (less than 5000xg) to concentrate the liquid at the bottom.
 5. Store the suspended plasmid at -20°C. The DNA is stable for at least one year from date of shipping when stored at -20°C.

RefSeq: [NM_032876.6](#)

RefSeq Size: 4262 bp

RefSeq ORF: 1617 bp

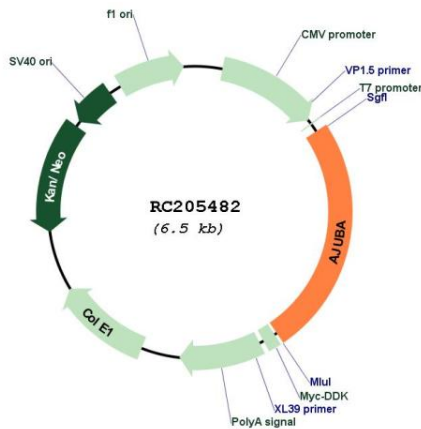
Locus ID: 84962

UniProt ID: [Q96IF1](#)

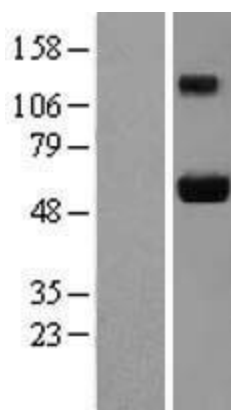
Cytogenetics: 14q11.2
Domains: LIM
MW: 56.9 kDa

Gene Summary: Adapter or scaffold protein which participates in the assembly of numerous protein complexes and is involved in several cellular processes such as cell fate determination, cytoskeletal organization, repression of gene transcription, mitosis, cell-cell adhesion, cell differentiation, proliferation and migration. Contributes to the linking and/or strengthening of epithelia cell-cell junctions in part by linking adhesive receptors to the actin cytoskeleton. May be involved in signal transduction from cell adhesion sites to the nucleus. Plays an important role in regulation of the kinase activity of AURKA for mitotic commitment. Also a component of the IL-1 signaling pathway modulating IL-1-induced NFkB1 activation by influencing the assembly and activity of the PRKCZ-SQSTM1-TRAF6 multiprotein signaling complex. Functions as an HDAC-dependent corepressor for a subset of GFI1 target genes. Acts as a transcriptional corepressor for SNAI1 and SNAI2/SLUG-dependent repression of E-cadherin transcription. Acts as a hypoxic regulator by bridging an association between the prolyl hydroxylases and VHL enabling efficient degradation of HIF1A. Positively regulates microRNA (miRNA)-mediated gene silencing. Negatively regulates the Hippo signaling pathway and antagonizes phosphorylation of YAP1.[UniProtKB/Swiss-Prot Function]

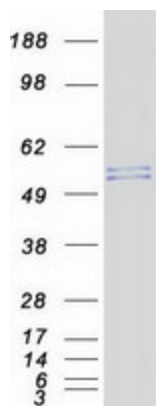
Product images:



Circular map for RC205482



Western blot validation of overexpression lysate (Cat# [LY409908]) using anti-DDK antibody (Cat# [TA50011-100]). Left: Cell lysates from untransfected HEK293T cells; Right: Cell lysates from HEK293T cells transfected with RC205482 using transfection reagent MegaTran 2.0 (Cat# [TT210002]).



Coomassie blue staining of purified AJUBA protein (Cat# [TP305482]). The protein was produced from HEK293T cells transfected with AJUBA cDNA clone (Cat# RC205482) using MegaTran 2.0 (Cat# [TT210002]).