

Product datasheet for **RC205477**

MARCHF8 (NM_001002266) Human Tagged ORF Clone

Product data:

Product Type:	Expression Plasmids
Product Name:	MARCHF8 (NM_001002266) Human Tagged ORF Clone
Tag:	Myc-DDK
Symbol:	MARCHF8
Synonyms:	c-MIR; CMIR; MARCH-VIII; MARCH8; MIR; RNF178
Mammalian Cell Selection:	Neomycin
Vector:	pCMV6-Entry (PS100001)
E. coli Selection:	Kanamycin (25 ug/mL)
ORF Nucleotide Sequence:	>RC205477 ORF sequence Red=Cloning site Blue=ORF Green=Tags(s)

TTTTGTAATACGACTCACTATAGGGCGGCCGGAATTCGTCGACTGGATCCGGTACCGAGGAGATCTGCC
GCC**CGATCGCC**

ATGAGCATGCCACTGCATCAGATCTCTGCCATTCCATCCCAGGATGCCATCTCTGCTAGAGTCTACAGAA
GTAAGACCAAAGAAAAGGAGAGGGAAGAACAAGAGACTTTGGGACATTCATGAGTCATTCAAG
CAACATTTCTAAGGCTGGGAGTCTCCGTCAGCATCAGCTCCGGCTCCGGTGTCTCTCTCGCACT
TCTATCACGCCATCCAGCCAGGACATCTGCAGGATCTGCCACTGTGAAGGAGATGATGAGAGCCCCCTGA
TCAACCCCTGCCACTGCACAGGAAGCCTCCACTTCGTGCACCAGGCTGCCTGCAGCAGTGGATCAAGAG
CTCCGACACGCGCTGCTGCGAGCTCTGCAAGTATGAGTTCATCATGGAGACCAAGCTGAAGCCACTGAGA
AAATGGGAGAAGTTGCAGATGACGTCCAGCGAGCGCAGGAAGATCATGTGCTCAGTGACATTCCACGTCA
TTGCCATCACATGTGTGGTCTGGTCTTGTATGTGCTCATTGACCGTACTGCTGAGGAGATCAAGCAGGG
GCAGGCAACAGGAATCCTAGAATGGCCCTTTGGACTAAATTGGTGGTTGTGGCCATCGGCTTACCAGGA
GGACTTCTTTTATGTATGTTTCAGTGTAAGTGTATGTGCAATTGTGGAAGAGACTCAAGGCCTATAATA
GAGTGATCTATGTTCAAACACTGTCCAGAAACAAGCAAAAAGAATATTTTTGAAAAATCTCCACTAACAGA
GCCCAACTTTGAAAATAAACATGGACATGGAATCTGTCTATTCCGACACAAACTCTTCTTGTGCACAGAG
CCTGAAGACACTGGAGCAGAAATCATTACGTC

ACGCGTACGCGGCCGCTCGAGCAGAAACTCATCTCAGAAGAGGATCTGGCAGCAAATGATATCTGGATT
ACAAGGATGACGACGATAAGGTTTAA



[View online »](#)

Protein Sequence: >RC205477 protein sequence
Red=Cloning site Green=Tags(s)

MSMPLHQISAIPSQDAISARVYRSKTKEKEREEQNEKTLGHFMSHSSNISKAGSPPSASAPVSSFSRT
 SITPSSQDICRICHCEGDDESPILTPCHCTGSLHFVHQACLQQWIKSSDTRCCCLCKYEFIMETKPKPLR
 KWEKLMQTSERRKIMCSVTFHVIAITCVVWSLYVLIDRTAEEIKQGQATGILEWPFWTKLVVVAIGFTG
 GLLFMVYQCKVYVQLWKRLKAYNRVIYVQNCPEPSSKKNIFEKSPLTEPNFENKHGHGICHSDTNSSCCTE
 PEDTGAEIIHV

TRTRPLEQKLISEEDLAANDILDYKDDDDKV

Chromatograms: https://cdn.origene.com/chromatograms/mk6316_g09.zip

Restriction Sites: SgfI-MluI

Cloning Scheme:



ACCN: NM_001002266

ORF Size: 873 bp

OTI Disclaimer: The molecular sequence of this clone aligns with the gene accession number as a point of reference only. However, individual transcript sequences of the same gene can differ through naturally occurring variations (e.g. polymorphisms), each with its own valid existence. This clone is substantially in agreement with the reference, but a complete review of all prevailing variants is recommended prior to use. [More info](#)

OTI Annotation: This clone was engineered to express the complete ORF with an expression tag. Expression varies depending on the nature of the gene.

Components: The ORF clone is ion-exchange column purified and shipped in a 2D barcoded Matrix tube containing 10ug of transfection-ready, dried plasmid DNA (reconstitute with 100 ul of water).

Reconstitution Method:

1. Centrifuge at 5,000xg for 5min.
2. Carefully open the tube and add 100ul of sterile water to dissolve the DNA.
3. Close the tube and incubate for 10 minutes at room temperature.
4. Briefly vortex the tube and then do a quick spin (less than 5000xg) to concentrate the liquid at the bottom.
5. Store the suspended plasmid at -20°C. The DNA is stable for at least one year from date of shipping when stored at -20°C.

RefSeq: [NM_001002266.3](#)

RefSeq Size: 4812 bp

RefSeq ORF: 876 bp

Locus ID: 220972

UniProt ID: [Q5T0T0](#)

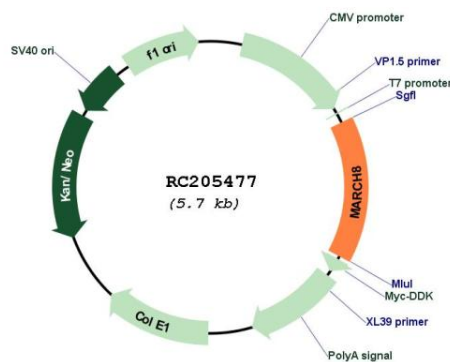
Cytogenetics: 10q11.21-q11.22

Protein Families: Druggable Genome, Transmembrane

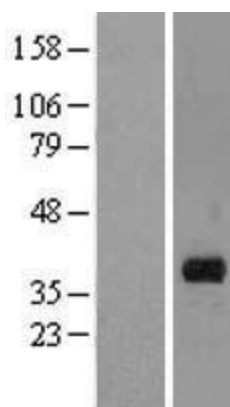
MW: 32.9 kDa

Gene Summary: MARCF8 is a member of the MARCF family of membrane-bound E3 ubiquitin ligases (EC 6.3.2.19). MARCF enzymes add ubiquitin (see MIM 191339) to target lysines in substrate proteins, thereby signaling their vesicular transport between membrane compartments. MARCF8 induces the internalization of several membrane glycoproteins (Goto et al., 2003 [PubMed 12582153]; Bartee et al., 2004 [PubMed 14722266]).[supplied by OMIM, Apr 2010]

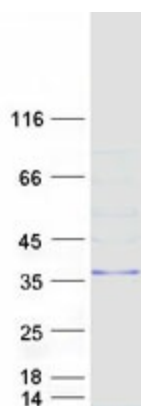
Product images:



Circular map for RC205477



Western blot validation of overexpression lysate (Cat# [LY424198]) using anti-DDK antibody (Cat# [TA50011-100]). Left: Cell lysates from untransfected HEK293T cells; Right: Cell lysates from HEK293T cells transfected with RC205477 using transfection reagent MegaTran 2.0 (Cat# [TT210002]).



Coomassie blue staining of purified MARCH8 protein (Cat# [TP305477]). The protein was produced from HEK293T cells transfected with MARCH8 cDNA clone (Cat# RC205477) using MegaTran 2.0 (Cat# [TT210002]).