

## Product datasheet for **RC205471**

### Tumor protein D52 like 3 (TPD52L3) (NM\_001001875) Human Tagged ORF Clone

#### Product data:

**Product Type:** Expression Plasmids  
**Product Name:** Tumor protein D52 like 3 (TPD52L3) (NM\_001001875) Human Tagged ORF Clone  
**Tag:** Myc-DDK  
**Symbol:** Tumor protein D52 like 3  
**Synonyms:** D55; hD55; NYDSP25; TPD55  
**Mammalian Cell Selection:** Neomycin  
**Vector:** pCMV6-Entry (PS100001)  
**E. coli Selection:** Kanamycin (25 ug/mL)  
**ORF Nucleotide Sequence:** >RC205471 ORF sequence  
Red=Cloning site Blue=ORF Green=Tags(s)

TTTTGTAATACGACTCACTATAGGGCGGCCGGAATTCGTCGACTGGATCCGGTACCGAGGAGATCTGCC  
GCC**CGATCGCC**

ATGCCACATGCCAGGACAGAGACCTCTGTGGGCACATAGAATCCCACTCGACTTCTGAACTGGAGGATC  
TGACAGAGCCCGAGCAAAGAGAGCTCAAACCAAACCTCACTAAATGGAGGCTGAAATTGTAACCCCTACG  
CCACGTAAGCAGCCAAAGAGAGACGCTGTGGGAACTCAAGAGGAAGTTAGGCCTCACCGCCTTGTA  
GGGCTGAGACAGAATCTGTCCAAGAGCTGGCTTGATGTTTCAGGTCTCAACACCTATGTAAACAGAAGA  
CATCAGCTGCTCTGTCCACCATGGGCACTCTCATCTGCAGGAAGCTTGGAGGCGTAAGAAGTCGGCCAC  
ACTCAGATCTTTGAAGGAAACCCTAAAGGAGAAGGAAGCAGAATA

**ACGCGT**ACGCGGCCGCTCGAGCAGAAACTCATCTCAGAAGAGGATCTGGCAGCAAATGATATCCTGGATT  
ACAAGGATGACGACGATAAGGTTTAA

**Protein Sequence:** >RC205471 protein sequence  
Red=Cloning site Green=Tags(s)  
MPHARTETSVGTYESHSTSELEDLPEQRELKTKLTKLEAEIVTLRHVLAALKERRRCGELKRKLGTLALV  
GLRQNLKSKSWLDVQVSNITYVKQKTSAAALSTMGLICRKLGGVKKSATLRSFEGNPKGEGSRI

**TR**TRPLEQKLISEEDLAANDILDYKDDDDKV

**Chromatograms:** [https://cdn.origene.com/chromatograms/mk6315\\_a08.zip](https://cdn.origene.com/chromatograms/mk6315_a08.zip)

**Restriction Sites:** SgfI-MluI



[View online »](#)

**Cloning Scheme:**


**ACCN:** NM\_001001875

**ORF Size:** 396 bp

**OTI Disclaimer:** The molecular sequence of this clone aligns with the gene accession number as a point of reference only. However, individual transcript sequences of the same gene can differ through naturally occurring variations (e.g. polymorphisms), each with its own valid existence. This clone is substantially in agreement with the reference, but a complete review of all prevailing variants is recommended prior to use. [More info](#)

**OTI Annotation:** This clone was engineered to express the complete ORF with an expression tag. Expression varies depending on the nature of the gene.

**Components:** The ORF clone is ion-exchange column purified and shipped in a 2D barcoded Matrix tube containing 10ug of transfection-ready, dried plasmid DNA (reconstitute with 100 ul of water).

**Reconstitution Method:**

1. Centrifuge at 5,000xg for 5min.
2. Carefully open the tube and add 100ul of sterile water to dissolve the DNA.
3. Close the tube and incubate for 10 minutes at room temperature.
4. Briefly vortex the tube and then do a quick spin (less than 5000xg) to concentrate the liquid at the bottom.
5. Store the suspended plasmid at -20°C. The DNA is stable for at least one year from date of shipping when stored at -20°C.

**RefSeq:** [NM\\_001001875.3](#), [NP\\_001001875.1](#)

**RefSeq Size:** 1353 bp

**RefSeq ORF:** 399 bp

**Locus ID:** 89882

**UniProt ID:** [Q96J77](#)

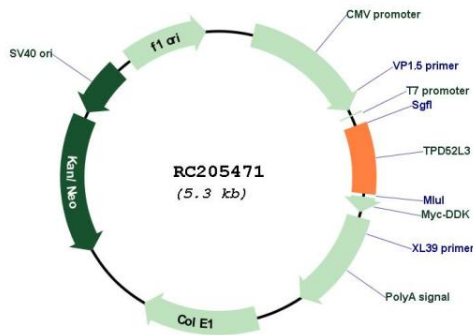
**Cytogenetics:** 9p24.1

**Protein Families:** Druggable Genome

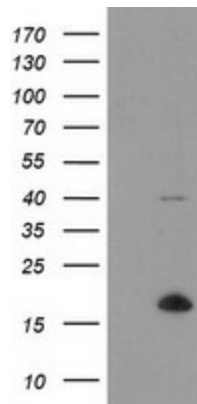
**MW:** 14.6 kDa

**Gene Summary:** This gene encodes a member of the tumor protein D52-like family of proteins. These proteins are characterized by an N-terminal coiled-coil motif that is used to form homo- and heteromeric complexes with other tumor protein D52-like proteins. The encoded protein may play a role in spermatogenesis. Alternative splicing results in multiple transcript variants. [provided by RefSeq, Oct 2009]

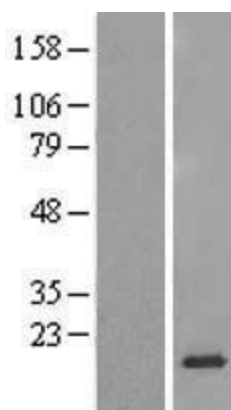
**Product images:**



Circular map for RC205471



HEK293T cells were transfected with the pCMV6-ENTRY control (Cat# [PS100001], Left lane) or pCMV6-ENTRY TPD52L3 (Cat# RC205471, Right lane) cDNA for 48 hrs and lysed. Equivalent amounts of cell lysates (5 ug per lane) were separated by SDS-PAGE and immunoblotted with anti-TPD52L3(Cat# [TA504986]). Positive lysates [LY424258] (100ug) and [LC424258] (20ug) can be purchased separately from OriGene.



Western blot validation of overexpression lysate (Cat# [LY424258]) using anti-DDK antibody (Cat# [TA50011-100]). Left: Cell lysates from untransfected HEK293T cells; Right: Cell lysates from HEK293T cells transfected with RC205471 using transfection reagent MegaTran 2.0 (Cat# [TT210002]).