

## Product datasheet for **RC205464**

### **PIWIL2 (NM\_018068) Human Tagged ORF Clone**

#### **Product data:**

Product Type:	Expression Plasmids
Product Name:	PIWIL2 (NM_018068) Human Tagged ORF Clone
Tag:	Myc-DDK
Symbol:	PIWIL2
Synonyms:	CT80; HILI; mili; PIWIL1L
Mammalian Cell Selection:	Neomycin
Vector:	pCMV6-Entry (PS100001)
E. coli Selection:	Kanamycin (25 ug/mL)



[View online »](#)

**ORF Nucleotide Sequence:**

>RC205464 ORF sequence  
 Red=Cloning site Blue=ORF Green=Tags(s)

TTTTGTAATACGACTCACTATAGGGCGGCCGGGAATTCGTCGACTGGATCCGGTACCGAGGAGATCTGCC  
 GCC**CGGATCGCC**

ATGGATCCTTTCCGACCATCGTTCAGGGGCCAGTCTCCTATCCACCCATCCCAGTGCCAGGCTGTACGGA  
 TGCCAGGCTGTTGGCCACAAGCTTCTAAACCTTTGGACCCAGCTCTGGCAGGGGAGCACCTGCAGGCAG  
 AGGCCATGATTTGGAAAAGCCAGAGGAACCAAGCACACAGAGGGGCCAGCACAAAAGGGAGTCTGTGGGT  
 TTGGTCTCCATGTTCCGAGGCTGGGCATTGAAACAGTTTCTAAGACCCCTCTGAAACGGGAAATGCTTC  
 CATCAGGTAGAGGCATTTTAGGTCGAGGCTTGTCTGCTAATCTGGTACGCAAGGACAGGGAGGAAGTCTC  
 TCCACTTTTTGGGATCCAAAAGTGTGGCGGCTGGGACAGCAAGATGGCAGAGACCTCCGTTGGTTGG  
 AGTAGGACGCTTGAAGAGGGAGTTCAGATGCGTCTTTATTACCACTGGGAAGAGCAGCAGGTGGTATCA  
 GCAGAGAAGTGGACAAGCCTCCCTGTACCTTCAGCACACCGTCCCGGGTCCCCGCAGCTGTATCACC  
 ACCAGCTCTGCCAGTCTCCCCTGCACCTCCAGATCGCCCTCTGGTCTGACTGTGGAACACAAGGAA  
 AAAGAGCTTATTGTGAAGCAAGGATCAAAAGGAACACCTCAGTCTTTGGGACTGAACCTCGTCAAAATAC  
 AGTGTCATAATGAAGCAGTTTATCAATATCATGTGACTTTCAGCCCAATGTGGAGTGCAAAAGCATGAG  
 GTTCGGCATGTTGAAGGACCATCAAGCTGTACCAGCAACGCTCACTGCGTTTGATGGATCTATTCTCTAT  
 CTGCCTGTTAAGCTTCAACAAGTCTTGAGTAAAAAGTCAAAGGAAAACAGACAGTGTGAAATCAGCA  
 TTAAGATTCAGATGACAAAGATCCTGGAGCCCTGCTCTGACCTGTGCATTCCTTCTACAATGTTGTTTT  
 CCGTCGGGTAATGAACTTTTAGATATGAAGCTTGTGGGAGAACTTTTATGACCCTACAAGTGCATG  
 GTACTACAGCAACACAGATTGCAGATCTGGCCAGGCTATGCAGCTAGCATCCGAAGGACAGATGGAGGGC  
 TCTTCCTGCTAGCTGATGCTCCCATAAAGTCACTCGGAATGACTGTGTGCTGGATGTCATGATGCCAT  
 TTATCAGCAGAATAAAGAACACTCCAGGATGAGTGACTAAGCTTCTGGTTGGCAATATTGTTATCACC  
 CGATATAACAATCGTACCTATCGTATTGATGATGTGGATTGGAATAAGACTCCAAAGGATAGCTTACCGA  
 TGTCTGATGGGAAAGAGATCACATTCTTGAATACTACAGCAAAAATTATGGGATCACAGTTAAGGAAGA  
 GGACCAGCCATTGCTGATTCACAGGCCAGTGAGAGACAGGATAATCATGGGATGCTGCTAAAAGGGGAA  
 ATCCTGCTGCTGCTGAGCTTTCTTTTATGACCGGAATCCAGAGAAGATGAAGAAGGACTTCAGAGCCA  
 TGAAGGATTTGGCTCAGCAAATCAATCTGAGCCCAAGCAACACCATAGTCTTTGGAATGCTTGTCTGCA  
 AAGAATTGCAAAGACGAGCCAGCCACCAATGAACTGATGCGTTGGGGCTCCGCTGCAAAAGGATGTA  
 CATAAGATTGAAGGACGTTCTGCCAATGAAAGAATTAACCTAAAAAATACTTCGTTTATCACATCTC  
 AGGAACTAACTGGGTTAAGGAAGTAACAGAGACCCCTCCATCTTGACTATCCCATGCATTTCTGGGC  
 ACTTTTTTACCAAAGAGAGCAATGGACCAGGCTCGAGAAGTGGTCAACATGTTGGAGAAGATAGCCGGC  
 CCCATTGGCATGCGTATGAGCCACCGGCTGGGTTGAACTAAAGGATGACCGAATAGAGACTTATGTCA  
 GAACCATTCATCCACGTTAGGAGCTGAGGGGAAGATACAGATGGTTGTTTGATCATCATGGGCCACG  
 TGATGATCTCTATGGGGCCATCAAGAAGCTGTGCTGTGTGCGAGTCCCCAGTGCCTCCAGGTTGTCAAT  
 GTTCGAACCATGGTCAAGCCAGGCTTCGGAGTGTGGCCAGAAGATTTTACTTCAGATTAAGTGA  
 AATTGGGTGGTGAAGCTCTGGGGAGTGGATTCCTCTGAAACAGTTAATGGTGTGCGGATGGATGTTTA  
 CCATGACCCAGTAGAGGCATGCGCTCCGTGGTTGGCTTCGTGGCAAGCATCAATCTCACCTCACAAAA  
 TGGTATTCCCGGGTGGTGTCCAGATGCCGCATCAGGAGATTGTGGACAGCCTGAAGCTATGCCTCGTGG  
 GCTCCTTAAAAAAGTTTTATGAGGTGAACCACTGTCTACCAGAGAAGATTGGTGTACCGTGTGGAGT  
 GTCTGATGGCCAACTGAAGACAGTTGCCAACTATGAGATTCTCAACTACAGAAGTGTTTTGAAGCTTTT  
 GAGAATTATCAGCCCAAGATGGTGGTGTGTAGTTTCCAGAAAGAAATCAGTACTAATCTATATCTGGCTG  
 CTCCTCAGAACTTTGTAAGTCCCACTCCTGGAAGTGTGGTGTAGATCATAACAATAACAAGCTGTGAGTGGT  
 GGATTTCTATCTTGGCCATCATGTACGGCAGGCTGTGGCATTCTACGCATTATGTCTGTGTTCTC  
 AACACCGCAAACCTGAGCCCTGATCATATGCAGAGGCTGACTTTCAAAGTGTGCCACATGTACTGGAATT  
 GGCTGGCACCATCAGAGTTCAGCTCCTTGAAGTATGCCACAAGCTAGCTTTCTGTGACAGACACAT  
 CTTGCATCATGAACCAGCCATCCAGCTGTGCGAGAACCTGTTCTTCTCTG

**ACGCGT**ACGCGGCCGCTCGAGCAGAACTCATCTCAGAAGAGGATCTGGCAGCAAATGATATCCTGGATT  
 ACAAGGATGACGACGATAAGGTTTAA

**Protein Sequence:** >RC205464 protein sequence  
 Red=Cloning site Green=Tags(s)

```

MDPFRPSFRGQSPIHPSQCQAVRMPGCWPQASKPLDPALGRGAPAGRGHVF GKPEEPSTQRGPAQRESVG
LVSMFRGLGIETVSKTPLKREMLPSGRGILGRGLSANLVRKDREEL SPTFWDPKVLAAAGDSKMAETS VGW
SRTLGRGSSDASLLPLGRAAGGISREVDKPPCTFSTPSRGPQLSSPPALPQSPLHSPDRPLVLTVEHKE
KELIVKQGSKGTPQSLGLNLVKIQCHNEAVYQYHVTFSPNVECKSMRFGMLKDHQAVTGNVTAFDGSILY
LPVKLQQVLELKSQRKTDSAEISIKIQMTKILEPCSDLCIPFYNVVFRVMKLLDMKLVGRNFYDPTSAM
VLQQHRLQIWPGYAASIRRTDGGFLFLLADVSHKVI RNDCLVDMHAIYQQNKEHFQDECTKLLVGNIVIT
RYNNRTYRIDDDVWNKTPKDSFTMSDGKEITFLEYSKNYGITVKEEDQPLL IHRP SERQDNHGMLLKGE
ILLPELSFMTGIPEKMKKDFRAMKDLAQQINLSPKQHHSALECLLQRIAKNEAATNELMRWGLRLQKDV
HKIEGRVLPMERINLKNTSFITSQELNWKVETRDPSILTIPMHFWALFYPKRAMDQARELVNMLEK IAG
PIGMRMSPPAWVELKDDRIETYVRTIQSTLGAEGKIQMVVCIIMGPRDDL YGAIKKLCCVQSPVPSQVVN
VRTIGQPTRLRSVAQKILLQINCKLGGELWGVDIPLKQLMVGMDVYHDP SRGMRSVVGFVASINLTLTK
WYSRVVVFQMPHQEIVDSLKLCVLSLKKFYEYVNHCLPEKIVVYRDGVSDGQLKTVANYEIPQLQKCFEAF
ENYQPKMVVVFVQKKISTNL YLAAPQNFVTPPTGTVVDHTITSCEWVDFYLLAHHVRQCGGIPHYVCVL
NTANLSPDHMQRLTFKLCHMYWNP GTIRVPAPCKYAHKLAFLSGHILHHEPAIQLCENLFFL
  
```

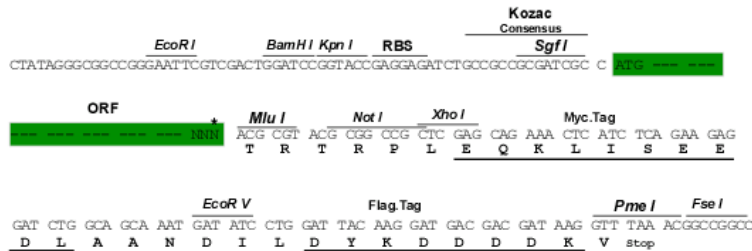
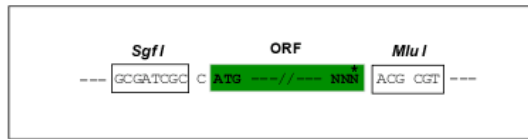
TRTRPLEQKLISEEDLAANDILDYKDDDDKV

**Chromatograms:** [https://cdn.origene.com/chromatograms/mk6141\\_c06.zip](https://cdn.origene.com/chromatograms/mk6141_c06.zip)

**Restriction Sites:** SgfI-MluI

**Cloning Scheme:**

Cloning sites used for ORF Shuttling:



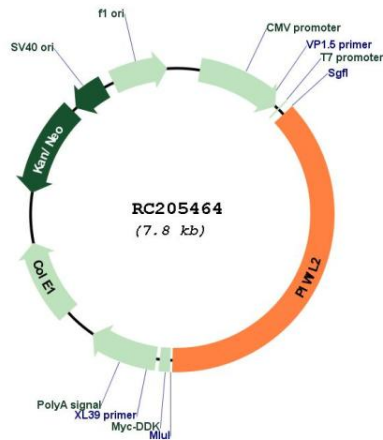
\* The last codon before the Stop codon of the ORF

**ACCN:** NM\_018068

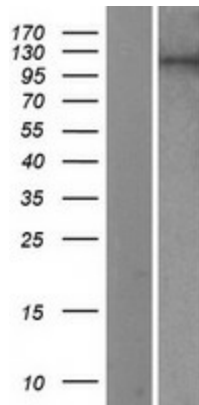
**ORF Size:** 2919 bp

<b>OTI Disclaimer:</b>	The molecular sequence of this clone aligns with the gene accession number as a point of reference only. However, individual transcript sequences of the same gene can differ through naturally occurring variations (e.g. polymorphisms), each with its own valid existence. This clone is substantially in agreement with the reference, but a complete review of all prevailing variants is recommended prior to use. <a href="#">More info</a>
<b>OTI Annotation:</b>	This clone was engineered to express the complete ORF with an expression tag. Expression varies depending on the nature of the gene.
<b>Components:</b>	The ORF clone is ion-exchange column purified and shipped in a 2D barcoded Matrix tube containing 10ug of transfection-ready, dried plasmid DNA (reconstitute with 100 ul of water).
<b>Reconstitution Method:</b>	<ol style="list-style-type: none"> <li>1. Centrifuge at 5,000xg for 5min.</li> <li>2. Carefully open the tube and add 100ul of sterile water to dissolve the DNA.</li> <li>3. Close the tube and incubate for 10 minutes at room temperature.</li> <li>4. Briefly vortex the tube and then do a quick spin (less than 5000xg) to concentrate the liquid at the bottom.</li> <li>5. Store the suspended plasmid at -20°C. The DNA is stable for at least one year from date of shipping when stored at -20°C.</li> </ol>
<b>RefSeq:</b>	<a href="#">NM_018068.5</a>
<b>RefSeq Size:</b>	3636 bp
<b>RefSeq ORF:</b>	2922 bp
<b>Locus ID:</b>	55124
<b>UniProt ID:</b>	<a href="#">Q8TC59</a>
<b>Cytogenetics:</b>	8p21.3
<b>Domains:</b>	PAZ, Piwi
<b>Protein Pathways:</b>	Dorso-ventral axis formation
<b>MW:</b>	109.8 kDa
<b>Gene Summary:</b>	PIWIL2 belongs to the Argonaute family of proteins, which function in development and maintenance of germline stem cells (Sasaki et al., 2003 [PubMed 12906857]).[supplied by OMIM, Mar 2008]

Product images:



Circular map for RC205464



Western blot validation of overexpression lysate (Cat# [LY427682]) using anti-DDK antibody (Cat# [TA50011-100]). Left: Cell lysates from untransfected HEK293T cells; Right: Cell lysates from HEK293T cells transfected with [RC227303] using transfection reagent MegaTran 2.0 (Cat# [TT210002]).