

Product datasheet for **RC205462**

SPATA16 (NM_031955) Human Tagged ORF Clone

Product data:

Product Type:	Expression Plasmids
Product Name:	SPATA16 (NM_031955) Human Tagged ORF Clone
Tag:	Myc-DDK
Symbol:	SPATA16
Synonyms:	NYD-SP12; SPGF6
Mammalian Cell Selection:	Neomycin
Vector:	pCMV6-Entry (PS100001)
E. coli Selection:	Kanamycin (25 ug/mL)



[View online »](#)

ORF Nucleotide Sequence:

>RC205462 ORF sequence
 Red=Cloning site Blue=ORF Green=Tags(s)

TTTTGTAATACGACTCACTATAGGGCGGCCGGAATTCGTCGACTGGATCCGGTACCGAGGAGATCTGCC
 GCC**GCGATCGCC**

ATGGATGCAGGAAGCAGTAGGAGTTGGAGAATGCAGTGAATAGGATCTATCATGATCAGCTTGTCCAA
 AGATAAACACAAGCAAGAAAATGTCACCTTAGCGCACCCACCTAACATCCTGGAATGTACAAGAGAT
 TAAGAAAACTGTGGAGGTAACAGGTAGAAATCACACTTGAAGAACAATAATGACAAAGGCATCAAA
 GAAAAACAAGCAATGATTTAGAGAAAGCAGCCTTAAACGGAAGGCAGAAAGGTGAAGGAAAGCCAACTA
 GAAAGAAACAGGCAAGATAACAGAACTTGACAATCAGTTAATCACCATGCCTCTGCCTCACATCCCCTT
 AAAGAACATAATGGATGTGGAATGAAGTTGGTCTACATTGATGAAATGGGTGTTGCTATGAGTTTGT
 GAGTCCTTCATGTCTACTGGGAGTCAGCCAACATGCCAAGCTGCTGAAATAGTAGACCCTTTGAGTGTAC
 ATAATTTTCAGCTTCTGCCTCAGATTGACAATGGCTTCAGGTAGCCTTAAAGGATGCCAGCTCTTGCTA
 TAGACAAAAGAAATACGCCTTGGCAGCAGGACAGTTTCAAGCAGCACTTGAAGCTTTCAGCAAAAGGAGCA
 GTTCTGGGAGAACCATTTGATGCACCTGCTGAAGATATAGCAAGCGTGGCAAGTTTCATTGAGACAAAGC
 TTGTTACCTGTTATCTACGGATGAGGAAACCAGATCTTGCCCTGAATCATGCACACAGGAGCATTGTTTT
 AAACCCAGCCTATTTCCGGAATCATCTTCGTCAGCAACAGTGTTTAGATGTCTGGAGAGGTATTCAGAG
 GCTGCCCGGAGTGCCATGATTGCTGACTACATGTTCTGGCTTGGTGGAGGAAGGGAAGAGAGCATAAGCA
 AGCTCATCAAAGTGTATTGGCAGGCCATGATTGAGGAAGCCATCACAGAGCTGAATCTTTCTCGGTTAT
 GTACACACCATTTGCGACAAAAAAGAGCTGATAAAATAGAAAAAGTAAAAGATGCTTTACAAAAACT
 CATCCTGCATATGCAGAGTATATGTACACAGACTTCAAGCACTCCACATGTTGCCTCAGACAGTTGACT
 GGTCCTTTTTCTCCCAACAATATCTTTGACTCTTGGGTTCAAAAAACAAGATGAGGAAAAATTTTT
 GGAAAAAATATCAAGCAGGAAGCTGCCGATTTACAGAGCATAAAAAACACCTTTCCGCTGACAGAGAA
 GATACAGTGAGGCAAAATGGAGACAATGGGAAGCGAATCTTGCCAATATTGGATTTTATTAGAAGACCC
 AATTGAATGGGAGTTTTCTGCATCCTCAGGTGTGATGGAGAAGTTGCAATATGCCAGCCTCCTCAGCCA
 GCTGCAGAGAGTAAAGGAGCAGTCCCAGGTGATTAATCAAGCAATGGCAGAGCTAGCAACCATTCCCTAC
 CTACAGGACATCAGTCAACAGGAGGCAGAAATGCTGCAGTCACTAATGGCAGATGCTATGGACACCTTG
 AAGGAAGAAGAAACAATAATGAACGTGTGTGGAATATGATCCAAAAGGTTGGACAAATTGAAGATTTTCT
 ATACCAATTAGAGGACAGTTTCTTAAAACTAAAAACTGAGAAGTCTCGAAGGCAAAAAACAATAATG
 AAGCGACTTCAAAGTGTTCAGCAAAGG

ACGCGTACGCGGCCGCTCGAGCAGAAACTCATCTCAGAAGAGGATCTGGCAGCAAATGATATCCTGGATT
 ACAAGGATGACGACGATAAGGTTTAA

Protein Sequence:

>RC205462 protein sequence
 Red=Cloning site Green=Tags(s)

MDAGSSRSLENAVNRIYHDQLVPKINTSKKMSTLAHPPNILEMSQEIKKNCGGKQVEITLERTKMTKGIK
 EKQSNLEKAFAFKRKAEGEGKPTRKKQAKITELDNQLITMPLPHIPLKNIMDVEMKLVYIDEMGVRYEFV
 ESFMSTGSQPTCQAAEIVDPLSVHNFSLPQIDKWLQVALKDASSCYRQKYYALAAGQFRTALELCSKGA
 VLGEFPDAPAEDIAVASFIEITKLVTCLYLRMRKPDALNHAHRSIVLNPAYFRNHLRQATVFRCLERYSE
 AARSAMIADYMFWLGGREESISKLIKLYWQAMIEEAITRAESFSVMYTPFATKIRADKIEKVKDAFTKT
 HPAYAEYMYTDLQALHMLPQTVDWSSFPQQYLLTLGFKNKDDGKFLKISSRKLPIFTEHKTPFGLTRE
 DTVRQMETMGKRILPILDFIRSTQLNGSFPASSGVMEKLQYASLLSQLQRVKEQSQVINQAMAELATIPY
 LQDISQEAELLQSLMADAMDTLEGRNNNERVWNMIQKVGQIEDFLYQLEDLSFLKTKKLRRTARRQKTKM
 KRLQTVQQR

TRTRPLEQKLISEEDLAANDILDYKDDDDKV

Chromatograms:

https://cdn.origene.com/chromatograms/mk6027_f01.zip

Restriction Sites:

Sgfl-Mlul

Cloning Scheme:


ACCN: NM_031955

ORF Size: 1707 bp

OTI Disclaimer: The molecular sequence of this clone aligns with the gene accession number as a point of reference only. However, individual transcript sequences of the same gene can differ through naturally occurring variations (e.g. polymorphisms), each with its own valid existence. This clone is substantially in agreement with the reference, but a complete review of all prevailing variants is recommended prior to use. [More info](#)

OTI Annotation: This clone was engineered to express the complete ORF with an expression tag. Expression varies depending on the nature of the gene.

Components: The ORF clone is ion-exchange column purified and shipped in a 2D barcoded Matrix tube containing 10ug of transfection-ready, dried plasmid DNA (reconstitute with 100 ul of water).

- Reconstitution Method:**
1. Centrifuge at 5,000xg for 5min.
 2. Carefully open the tube and add 100ul of sterile water to dissolve the DNA.
 3. Close the tube and incubate for 10 minutes at room temperature.
 4. Briefly vortex the tube and then do a quick spin (less than 5000xg) to concentrate the liquid at the bottom.
 5. Store the suspended plasmid at -20°C. The DNA is stable for at least one year from date of shipping when stored at -20°C.

RefSeq: [NM_031955.6](#)

RefSeq Size: 2122 bp

RefSeq ORF: 1710 bp

Locus ID: 83893

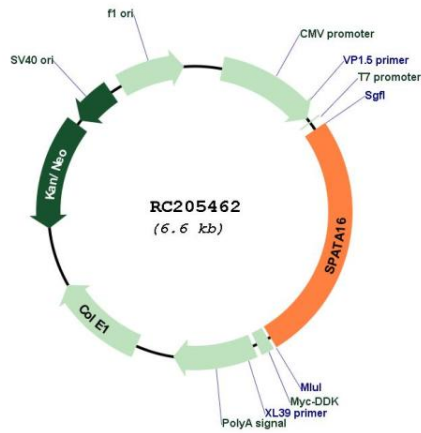
UniProt ID: [Q9BXB7](#)

Cytogenetics: 3q26.31

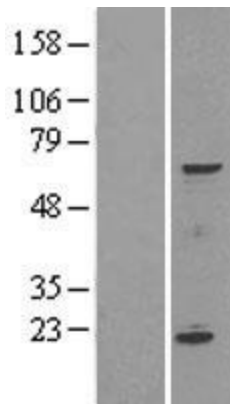
MW: 65.2 kDa

Gene Summary: This gene encodes a testis-specific protein that belongs to the tetratricopeptide repeat-like superfamily. The encoded protein localizes to the Golgi apparatus and may play a role in spermatogenesis. [provided by RefSeq, May 2010]

Product images:



Circular map for RC205462



Western blot validation of overexpression lysate (Cat# [LY403133]) using anti-DDK antibody (Cat# [TA50011-100]). Left: Cell lysates from untransfected HEK293T cells; Right: Cell lysates from HEK293T cells transfected with RC205462 using transfection reagent MegaTran 2.0 (Cat# [TT210002]).