

## Product datasheet for **RC205460**

### WDR69 (DAW1) (NM\_178821) Human Tagged ORF Clone

#### Product data:

Product Type:	Expression Plasmids
Product Name:	WDR69 (DAW1) (NM_178821) Human Tagged ORF Clone
Tag:	Myc-DDK
Symbol:	WDR69
Synonyms:	ODA16; WDR69
Mammalian Cell Selection:	Neomycin
Vector:	pCMV6-Entry (PS100001)
E. coli Selection:	Kanamycin (25 ug/mL)
ORF Nucleotide Sequence:	>RC205460 ORF sequence Red=Cloning site Blue=ORF Green=Tags(s)

TTTTGTAATACGACTCACTATAGGGCGCCGGGAATTCGTCGACTGGATCCGGTACCGAGGAGATCTGCC  
GCC**CGATCGCC**

ATGAAGCTCAAGAGCCTCCTGCTCCGGTATTACCCGCCAGGAATTATGTTGGAATATGAAAAACATGGAG  
AATTAAGACTAAGTCCATAGATTTGCTTGATCTTGGTCCAGCACTGATGTCAGTGCCTTAGTAGAAGA  
AATCCAGAAGGCAGAACCTCTACTCACAGCTTCACGAACAGAGCAAGTCAAACCTTTGATACAGAGGTTG  
CAAGAGAACTCGCCAGAACAGCAATCACACGTTCTATCTTTTAAAGTTCTCAAAGCACATATATTGC  
CACTGACTAATGTTGCACTTAACAAATCGGGCTCATGCTTTATCACAGGAAGCTATGATCGGACGTGCAA  
GCTCTGGGACACTGCGTCTGGAGAGGAGCTGAACACGCTGGAGGGCCACAGGAATGTGGTTTATGCCATA  
GCATTAACAATCCTTACGGTGACAAAATCGCCACTGGGTCTTTGATAAAAACCTGTAAACTCTGGAGTG  
TGGAAACAGGAAAATGTTACCATACCTTCAGGGGTATACAGCAGAAAATAGTGTGTTTATCATTTAACCC  
TCAAAGCACATTTGGTGGCGACTGGAAGTATGGACACAACAGCCAAATTTGGGACATTCAGAATGGCGAG  
GAAGTTTACACCTTAAGAGGACATTCGCCGAAATCATCTCCTTGTCATTTAACCTCAGGAGACAGAA  
TCATCACGGGGTCTTTGATCATACCGTTGTAGTGTGGGACGCTGATACTGGAAGGAAGGTAAATATCTT  
AATTGGTCATTGTGCTGAGATTAGCAGTGCCTCATTCAATTGGGATTGCTCTCTAATATTAACCTGGCTCT  
ATGGCAAAAACCTGCAAGCTGTGGGATGCTACAAATGGAAAATGTGGCAACCTTAACAGGCCATGATG  
ATGAAATACTAGACAGCTGCTTTGATTACACTGGAAAGCTTATTGCAACTGCTTCAGCTGATGGAACAGC  
AAGAATTTTCAGTGCTGCCACAAGAAAATGCATTGCCAAACTGGAAGGTATGAAGGTGAAATTTCAAAG  
ATTTCTTTCAACCCTCAAGGGAACCATCTTCTAACTGGCAGCTCTGACAAAACGGCTAGAATCTGGGATG  
CTCAGACTGGCCAGTGCCTCCAGGTTCTTGAGGGGCACACTGATGAAATCTTTTCATGTGCTTTCAACTA  
TAAAGGCAACATAGTCATTACAGGCAGCAAGGATAATACCTGTAGGATATGGCGT

**ACGCGT**ACGCGGCCGCTCGAGCAGAAAACCTCATCTCAGAAGAGGATCTGGCAGCAAATGATATCCTGGATT  
ACAAGGATGACGACGATAAGGTTTAA



[View online »](#)

**Protein Sequence:** >RC205460 protein sequence  
Red=Cloning site Green=Tags(s)

MKLKSLLLRYPPGIMLEYEKHGELKTKSIDLLDGPSTDVSALVEEIQKAEPLL TASRTEQVKLLIQRL  
 QEKLQNSNHTFYLFKVLKAHILPLTNVALNKSGSCFITGSYDRTCKLWDTASGEELNTLEGHRNVVYAI  
 AFNNPYGDKIATGSFDKTKLWSVETGKCYHTFRGHTAEIVCLSFNPQSTLVATGSMDDTTAKLWDIQNGE  
 EVYTLRGHSAEIIISL SFNTSGDRIITGSFDHTVVVWDADTGRKVNILIGHCAEISSASFNWDCSLILTGS  
 MDKTCKLWDATNGKCVATLTGHDDIILDSCFDYTGKLIATASADGTARIFSAATRKCIAKLEGEHEGEISK  
 ISFNPQGNHLLTGSSDKTARIWDAQTGQCLQVLEGHTDEIFSCAFNYKGNIVITGSKDNTCRIWR

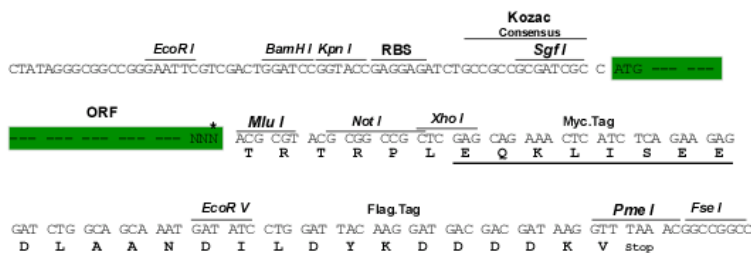
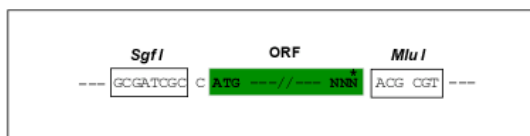
TRTRPLEQKLISEEDLAANDILDYKDDDDKV

**Chromatograms:** [https://cdn.origene.com/chromatograms/mk6536\\_c03.zip](https://cdn.origene.com/chromatograms/mk6536_c03.zip)

**Restriction Sites:** SgfI-MluI

**Cloning Scheme:**

Cloning sites used for ORF Shuttling:



\* The last codon before the Stop codon of the ORF

**ACCN:** NM\_178821

**ORF Size:** 1245 bp

**OTI Disclaimer:** The molecular sequence of this clone aligns with the gene accession number as a point of reference only. However, individual transcript sequences of the same gene can differ through naturally occurring variations (e.g. polymorphisms), each with its own valid existence. This clone is substantially in agreement with the reference, but a complete review of all prevailing variants is recommended prior to use. [More info](#)

**OTI Annotation:** This clone was engineered to express the complete ORF with an expression tag. Expression varies depending on the nature of the gene.

**Components:** The ORF clone is ion-exchange column purified and shipped in a 2D barcoded Matrix tube containing 10ug of transfection-ready, dried plasmid DNA (reconstitute with 100 ul of water).

**Reconstitution Method:**

1. Centrifuge at 5,000xg for 5min.
2. Carefully open the tube and add 100ul of sterile water to dissolve the DNA.
3. Close the tube and incubate for 10 minutes at room temperature.
4. Briefly vortex the tube and then do a quick spin (less than 5000xg) to concentrate the liquid at the bottom.
5. Store the suspended plasmid at -20°C. The DNA is stable for at least one year from date of shipping when stored at -20°C.

**RefSeq:** [NM\\_178821.3](#)

**RefSeq Size:** 1669 bp

**RefSeq ORF:** 1248 bp

**Locus ID:** 164781

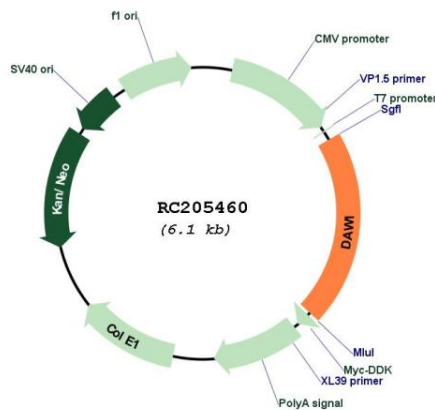
**UniProt ID:** [Q8N136](#)

**Cytogenetics:** 2q36.3

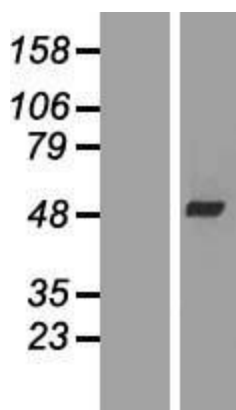
**MW:** 45.8 kDa

**Gene Summary:** May play a role in axonemal outer row dynein assembly.[UniProtKB/Swiss-Prot Function]

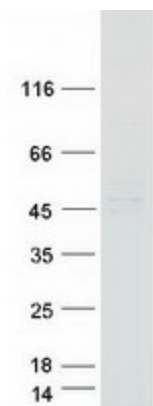
**Product images:**



Circular map for RC205460



Western blot validation of overexpression lysate (Cat# [LY405839]) using anti-DDK antibody (Cat# [TA50011-100]). Left: Cell lysates from untransfected HEK293T cells; Right: Cell lysates from HEK293T cells transfected with RC205460 using transfection reagent MegaTran 2.0 (Cat# [TT210002]).



Coomassie blue staining of purified DAW1 protein (Cat# [TP305460]). The protein was produced from HEK293T cells transfected with DAW1 cDNA clone (Cat# RC205460) using MegaTran 2.0 (Cat# [TT210002]).