

## Product datasheet for RC205446L1

### CYP46 (CYP46A1) (NM\_006668) Human Tagged Lenti ORF Clone

#### Product data:

|                           |  |
|---------------------------|--|
| Product Type:             | Expression Plasmids  |
| Product Name:             | CYP46 (CYP46A1) (NM_006668) Human Tagged Lenti ORF Clone       |
| Tag:                      | Myc-DDK  |
| Symbol:                   | CYP46  |
| Synonyms:                 | CP46; CYP46  |
| Mammalian Cell Selection: | None   |
| Vector:                   | pLenti-C-Myc-DDK (PS100064)                                    |
| E. coli Selection:        | Chloramphenicol (34 ug/mL)                                     |
| ORF Nucleotide Sequence:  | The ORF insert of this clone is exactly the same as(RC205446). |
| Restriction Sites:        | SgfI-MluI  |
| Cloning Scheme:           |  |

Cloning sites used for ORF Shuttling:



\* The last codon before the Stop codon of the ORF.

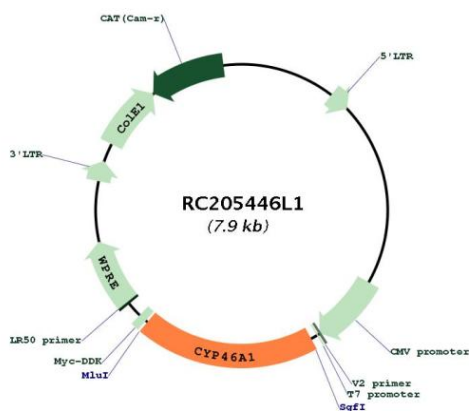
|           |           |
|-----------|-----------|
| ACCN:     | NM_006668 |
| ORF Size: | 1500 bp   |



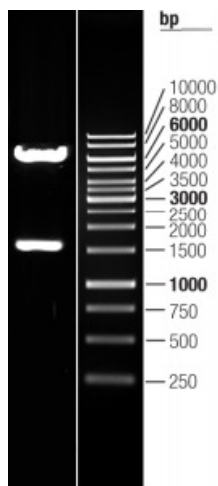
[View online »](#)

|                               |  |
|-------------------------------|--|
| <b>OTI Disclaimer:</b>        | The molecular sequence of this clone aligns with the gene accession number as a point of reference only. However, individual transcript sequences of the same gene can differ through naturally occurring variations (e.g. polymorphisms), each with its own valid existence. This clone is substantially in agreement with the reference, but a complete review of all prevailing variants is recommended prior to use. <a href="#">More info</a>   |
| <b>OTI Annotation:</b>        | This clone was engineered to express the complete ORF with an expression tag. Expression varies depending on the nature of the gene.   |
| <b>Components:</b>            | The ORF clone is ion-exchange column purified and shipped in a 2D barcoded Matrix tube containing 10ug of transfection-ready, dried plasmid DNA (reconstitute with 100 ul of water).   |
| <b>Reconstitution Method:</b> | <ol style="list-style-type: none"><li>1. Centrifuge at 5,000xg for 5min.</li><li>2. Carefully open the tube and add 100ul of sterile water to dissolve the DNA.</li><li>3. Close the tube and incubate for 10 minutes at room temperature.</li><li>4. Briefly vortex the tube and then do a quick spin (less than 5000xg) to concentrate the liquid at the bottom.</li><li>5. Store the suspended plasmid at -20°C. The DNA is stable for at least one year from date of shipping when stored at -20°C.</li></ol>  |
| <b>RefSeq:</b>                | <a href="#">NM_006668.1</a>  |
| <b>RefSeq Size:</b>           | 2138 bp  |
| <b>RefSeq ORF:</b>            | 1503 bp  |
| <b>Locus ID:</b>              | 10858  |
| <b>UniProt ID:</b>            | <a href="#">Q9Y6A2</a>   |
| <b>Cytogenetics:</b>          | 14q32.2  |
| <b>Protein Families:</b>      | Druggable Genome, P450   |
| <b>Protein Pathways:</b>      | Primary bile acid biosynthesis   |
| <b>MW:</b>                    | 56.8 kDa   |
| <b>Gene Summary:</b>          | This gene encodes a member of the cytochrome P450 superfamily of enzymes. The cytochrome P450 proteins are monooxygenases which catalyze many reactions involved in drug metabolism and synthesis of cholesterol, steroids and other lipids. This endoplasmic reticulum protein is expressed in the brain, where it converts cholesterol to 24S-hydroxycholesterol. While cholesterol cannot pass the blood-brain barrier, 24S-hydroxycholesterol can be secreted in the brain into the circulation to be returned to the liver for catabolism. [provided by RefSeq, Jul 2008] |

Product images:



Circular map for RC205446L1



Double digestion of RC205446L1 using SgfI and MluI