

## Product datasheet for **RC205445**

### **SYT11 (NM\_152280) Human Tagged ORF Clone**

#### **Product data:**

Product Type:	Expression Plasmids
Product Name:	SYT11 (NM_152280) Human Tagged ORF Clone
Tag:	Myc-DDK
Symbol:	SYT11
Synonyms:	SYT12; sytXI
Mammalian Cell Selection:	Neomycin
Vector:	pCMV6-Entry (PS100001)
E. coli Selection:	Kanamycin (25 ug/mL)



[View online »](#)

**ORF Nucleotide Sequence:**

>RC205445 ORF sequence  
 Red=Cloning site Blue=ORF Green=Tags(s)

TTTTGTAATACGACTCACTATAGGGCGGCCGGAATTCGTCGACTGGATCCGGTACCGAGGAGATCTGCC  
 GCC**GCGATCGCC**

ATGGCTGAGATACCAATATCCGACCTAGCTTTGATGTGTACCAGGTGGTGGCCGCGCTCATCGGGCCT  
 CTGTGCTGGTGGTGTGTCTCGGTGACCGTCTTTGTCTGGTCATGCTGCCACCAGCAGGACAGAGAAGAA  
 GCACAAGAACCACCATACAAGTTTATTACATGCTCAAAGGCATCAGCATATACCCAGAGACCCTCAGC  
 AACAAAGAAGAAAATCATCAAAGTGGGAGAGACAAAGATGGTCCTGGGAGGGAAGGTGGACGTAGGAACC  
 TGTTGGTGGACGCAGCAGAGGCTGGCCTGCTAAGCCGAGACAAAGATCCCAGGGGCGCTAGCTCTGGATC  
 TTGTATAGACCAATTACCCATCAAATGGACTATGGGGAAGAATAAGGAGCCCTATTACAAGCCTGACC  
 CCTGGGGAGAGCAAAACCACCTCTCCATCATCTCCAGAGGAGGATGTCATGCTAGGATCCCTCACCTTCT  
 CAGTGGACTATAACTTCCCGAAAAAGCCCTGGTGGTGAATCCAGGAGGCCACGGGCTGCCAGTGAT  
 GGATGACCAGACCCAGGGATCTGACCCCTACATCAAATGACCATCCTTCTGACAAACGGCATCGGGTG  
 AAGACCAGAGTGTGCGGAAGACCCTGGACCCTGTGTTTGACGAGACCTCACCTTCTATGTCATCCCT  
 ACAGCCAGCTGCAGGACCTGGTGTGCACTTCTTGTCTCAGCTTTGACCGCTTCTCTCGGGATGATGT  
 CATTGGCGAGGTCATGGTGCCACTGGCAGGGGTGGACCCAGCACAGGCAAGGTACAACCTGACCAGGGAC  
 ATCATCAAAGGAATATCCAGAAGTGCATCAGCAGAGGGGAGCTCCAGGTGTCTCTGTATATCAGCCTG  
 TGGCACAGAGAATGACAGTGGTGGTCTCAAAGCCAGACACTTCCGAAGATGGATATCACCGGTCTCTC  
 AGGTAATCCTTATGTCAAGGTGAACGTCTACTACGGCAGAAAGCGCATTGCCAAGAAGAAAACCCATGTG  
 AAGAAGTGCACCTTGAACCCATCTTCAATGAATCTTTCATCTACGACATCCCCACTGACCTCCTGCCTG  
 ATATCAGCATCGAGTTCCTCGTTATCGACTTCGATCGCACCACCAAGAATGAGGTGGTGGGAGGCTGAT  
 CCTGGGGGCACACAGTGTACAGCCAGTGGTGTGAACACTGGAGAGAGGTCTGCCAGAGCCCCCGCAAG  
 CCTGTGGCCAAGTGGCACAGTCTGAGCGAGTAC

**ACGCGT**ACGCGGCCGCTCGAGCAGAAACTCATCTCAGAAGAGGATCTGGCAGCAATGATATCCTGGATT  
 ACAAGGATGACGACGATAAGGTTTAA

**Protein Sequence:**

>RC205445 protein sequence  
 Red=Cloning site Green=Tags(s)

MAEITNIRPSFDVSPVVAGLIGASVLVVCVSVTVFVWSCCHQQAIEKKHKNPPYKFIHMLKGISIYPETLS  
 NKKKIIVRRDKDGPREGGRRNLLVDAEAGLLSRDKDPRGPSSGSCIDQLPIKMDYGEELRSPITSLT  
 PGESKTTSPSSPEEDVMLGSLTFVSDYNFPKKALVVTIQEAHGLPVMDQTQGSDPYIKMTILPDKRHRV  
 KTRVLRKTLDPVFDETFYVYIPYSQLQDLVLHFLVLSFDRFSRDDVIGEVMPVPLAGVDPSTGKVQLTRD  
 IIKRNIQKCI SRGELQVLSYQPVAQRMTVVVLKARHLPKMDITGLSGNPYVKVNVVYGRKRIAKKTHV  
 KKCTLNPIFNESFIYDIPTDLLPDISIEFLVIDFDRTTKNEVVGRLLILGAHSVTAASGAEHWREVCESPRK  
 PVAKWHLSLEY

**TR**TRPLEQKLISEEDLAANDILDYKDDDDKV

**Chromatograms:**

[https://cdn.origene.com/chromatograms/mk6313\\_e08.zip](https://cdn.origene.com/chromatograms/mk6313_e08.zip)

**Restriction Sites:**

Sgfl-Mlul

**Cloning Scheme:**


**ACCN:** NM\_152280

**ORF Size:** 1293 bp

**OTI Disclaimer:** The molecular sequence of this clone aligns with the gene accession number as a point of reference only. However, individual transcript sequences of the same gene can differ through naturally occurring variations (e.g. polymorphisms), each with its own valid existence. This clone is substantially in agreement with the reference, but a complete review of all prevailing variants is recommended prior to use. [More info](#)

**OTI Annotation:** This clone was engineered to express the complete ORF with an expression tag. Expression varies depending on the nature of the gene.

**Components:** The ORF clone is ion-exchange column purified and shipped in a 2D barcoded Matrix tube containing 10ug of transfection-ready, dried plasmid DNA (reconstitute with 100 ul of water).

**Reconstitution Method:**

1. Centrifuge at 5,000xg for 5min.
2. Carefully open the tube and add 100ul of sterile water to dissolve the DNA.
3. Close the tube and incubate for 10 minutes at room temperature.
4. Briefly vortex the tube and then do a quick spin (less than 5000xg) to concentrate the liquid at the bottom.
5. Store the suspended plasmid at -20°C. The DNA is stable for at least one year from date of shipping when stored at -20°C.

**RefSeq:** [NM\\_152280.2](#), [NP\\_689493.2](#)

**RefSeq Size:** 5298 bp

**RefSeq ORF:** 1296 bp

**Locus ID:** 23208

**UniProt ID:** [Q9BT88](#)

**Cytogenetics:** 1q22

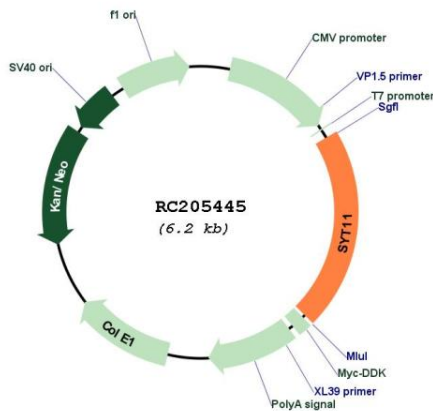
**Domains:** C2

**Protein Families:** Transmembrane

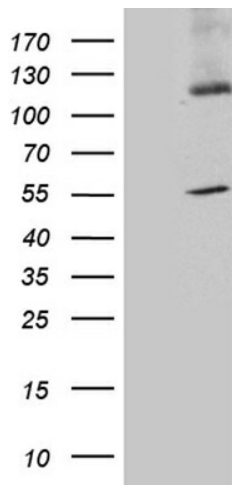
**MW:** 48.3 kDa

**Gene Summary:** This gene is a member of the synaptotagmin gene family and encodes a protein similar to other family members that are known calcium sensors and mediate calcium-dependent regulation of membrane trafficking in synaptic transmission. The encoded protein is also a substrate for ubiquitin-E3-ligase parkin. The gene has previously been referred to as synaptotagmin XII but has been renamed synaptotagmin XI to be consistent with mouse and rat official nomenclature. [provided by RefSeq, Apr 2010]

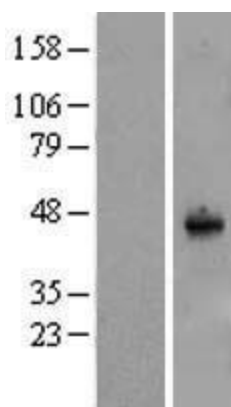
**Product images:**



Circular map for RC205445



HEK293T cells were transfected with the pCMV6-ENTRY control (Cat# [PS100001], Left lane) or pCMV6-ENTRY SYT11 (Cat# RC205445, Right lane) cDNA for 48 hrs and lysed. Equivalent amounts of cell lysates (5 ug per lane) were separated by SDS-PAGE and immunoblotted with anti-SYT11 (Cat# [TA810985])(1:500). Positive lysates [LY407700] (100ug) and [LC407700] (20ug) can be purchased separately from OriGene.



Western blot validation of overexpression lysate (Cat# [LY407700]) using anti-DDK antibody (Cat# [TA50011-100]). Left: Cell lysates from untransfected HEK293T cells; Right: Cell lysates from HEK293T cells transfected with RC205445 using transfection reagent MegaTran 2.0 (Cat# [TT210002]).