

Product datasheet for RC205441

DPPA2 (NM_138815) Human Tagged ORF Clone

Product data:

Product Type:	Expression Plasmids
Product Name:	DPPA2 (NM_138815) Human Tagged ORF Clone
Tag:	Myc-DDK
Symbol:	DPPA2
Synonyms:	CT100; ECAT15-2; PESCRG1
Mammalian Cell Selection:	Neomycin
Vector:	pCMV6-Entry (PS100001)
E. coli Selection:	Kanamycin (25 ug/mL)
ORF Nucleotide Sequence:	>RC205441 ORF sequence Red=Cloning site Blue=ORF Green=Tags(s)

TTTTGTAATACGACTCACTATAGGGCGGCCGGAATTCGTCGACTGGATCCGGTACCGAGGAGATCTGCCGCCGCGATCGCC

ATGTCAGATGCAAATTTGGATAGCAGCAAGAAGAATTTCTGGAGGGGAAGTAGATGATGAGGAAAGTG
TGATTTTGACACTGGTGCCAGTTAAAGATGACGCAAATATGGAACAAATGGAACCAAGCGTTTCTTCAAC
TTCTGATGTCAAAGCTGGAGAAGCCTAAGAAATACAATCCAGGTCATCTACTTCAAACAAATGAGCAATTT
ACAGCTCCACAAAAGCTAGATGCAAAAATACCAGCCCTCCCTTGCCGACCATTTTGCCTCCCATTAATA
AGGTGTGTCGGGACACTTTGCGGGACTGGTGTCAACAACCTCGGTTTGGAGTACTAATGGCAAGAAAATCGA
AGTTTATCTGAGGCTTCATAGGCATGCTTACCCTGAACAACGGCAAGATATGCCTGAAATGTCACAAGAG
ACCAGATTACAGCGATGTTTCGAGGAAACGCAAGGCAGTGACCAAGAGAGCAAGGCTTCAGAGAAGTTATG
AGATGAATGAGAGAGCAGAAGAGACCAATACAGTTGAAGTGATAACTTCAGCACCAGGAGCCATGTTGGC
ATCATGGGCAAGAATTGCTGCAAGAGCTGTTACGCCTAAGGCTTTGAATTCATGTTCCATTCCTGTTTCT
GTTGAGGCCTTTTTGATGCAAGCCTCTGGCGTCAGGTGGTGTGTGGTCCATGGCAGACTTCTCTCGGCAG
ACACAAAGGGTTGGGTACGCCTGCAGTTTCATGCAGGTCAGGCCTGGGTGCCTACCACTCACAGGAGGAT
GATTTCTCTCTTCTTGTACCTGCCTGCATTTCCCATCCCAGGCATAGAAGATAATATGTTATGCCCC
GACTGTGCTAAGAGGAATAAGAAGATGATGAAAAGATTAATGACAGTAGAGAAG

ACGCGTACGCGGCCGCTCGAGCAGAAAACCTCATCTCAGAAGAGGATCTGGCAGCAAATGATATCCTGGATT
ACAAGGATGACGACGATAAGGTTTAA



[View online »](#)

Protein Sequence: >RC205441 protein sequence
Red=Cloning site Green=Tags(s)

MSDANLDSSKKNFLEGEVDDEESVILTLPVKDDANMEQMEPSVSSTSDVKLEKPKKYNPGHLLQTNEQF
 TAPQKARCKIPALPLPTILPPINKVCRDTRLRDWCQQLGLSTNGKKIEVYLRRLHRHAYPEQRQDMPEMSQE
 TRLQRCRSRKRKAVTKRARLQRSYEMNERAEETNTVEVITSAPGAMLASWARIAARAVQPKALNSCSIPVS
 VEAFMQASGVRWCVVHGRLLSADTKGWVRLQFHAGQAWVPTTHRRMISLFLLPACIFPSPGIEDNMLCP
 DCAKRNKKMMKRLMTVEK

TRTRPLEQKLISEEDLAANDILDYKDDDDKV

Chromatograms: https://cdn.origene.com/chromatograms/mk6026_c12.zip

Restriction Sites: SgfI-MluI

Cloning Scheme:



ACCN: NM_138815

ORF Size: 894 bp

OTI Disclaimer: The molecular sequence of this clone aligns with the gene accession number as a point of reference only. However, individual transcript sequences of the same gene can differ through naturally occurring variations (e.g. polymorphisms), each with its own valid existence. This clone is substantially in agreement with the reference, but a complete review of all prevailing variants is recommended prior to use. [More info](#)

OTI Annotation: This clone was engineered to express the complete ORF with an expression tag. Expression varies depending on the nature of the gene.

Components: The ORF clone is ion-exchange column purified and shipped in a 2D barcoded Matrix tube containing 10ug of transfection-ready, dried plasmid DNA (reconstitute with 100 ul of water).

Reconstitution Method:

1. Centrifuge at 5,000xg for 5min.
2. Carefully open the tube and add 100ul of sterile water to dissolve the DNA.
3. Close the tube and incubate for 10 minutes at room temperature.
4. Briefly vortex the tube and then do a quick spin (less than 5000xg) to concentrate the liquid at the bottom.
5. Store the suspended plasmid at -20°C. The DNA is stable for at least one year from date of shipping when stored at -20°C.

RefSeq: [NM_138815.4](#)

RefSeq Size: 1393 bp

RefSeq ORF: 897 bp

Locus ID: 151871

UniProt ID: [Q7Z7J5](#)

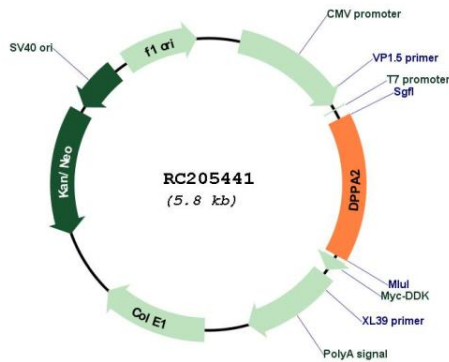
Cytogenetics: 3q13.13

Protein Families: Embryonic stem cells, Induced pluripotent stem cells, Stem cell - Pluripotency

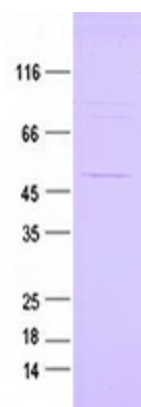
MW: 33.8 kDa

Gene Summary: Binds to target gene promoters, including NKX2-5 and SYCE1, but not GATA4, and may be involved in the maintenance of the active epigenetic status of these genes.[UniProtKB/Swiss-Prot Function]

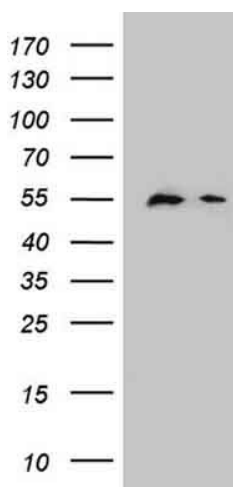
Product images:



Circular map for RC205441



Coomassie blue staining of purified DPPA2 protein (Cat# [TP305441]). The protein was produced from HEK293T cells transfected with DPPA2 cDNA clone (Cat# RC205441) using MegaTran 2.0 (Cat# [TT210002]).



HEK293T cells were transfected with the pCMV6-ENTRY control (Cat# [PS100001], Left lane) or pCMV6-ENTRY DPPA2 (Cat# RC205441, Right lane) cDNA for 48 hrs and lysed. Equivalent amounts of cell lysates (5 ug per lane) were separated by SDS-PAGE and immunoblotted with anti-DPPA2 (Cat# [TA800361]).