

Product datasheet for **RC205429**

AGXT2L1 (ETNPPL) (NM_031279) Human Tagged ORF Clone

Product data:

Product Type:	Expression Plasmids
Product Name:	AGXT2L1 (ETNPPL) (NM_031279) Human Tagged ORF Clone
Tag:	Myc-DDK
Symbol:	AGXT2L1
Synonyms:	AGXT2L1
Mammalian Cell Selection:	Neomycin
Vector:	pCMV6-Entry (PS100001)
E. coli Selection:	Kanamycin (25 ug/mL)



[View online »](#)

ORF Nucleotide Sequence:

>RC205429 ORF sequence
 Red=Cloning site Blue=ORF Green=Tags(s)

TTTTGTAATACGACTCACTATAGGGCGGCCGGAATTCGTCGACTGGATCCGGTACCGAGGAGATCTGCC
 GCC**GCGATCGCC**

ATGTGCGAGCTGTACAGTAAGCGGGACACTCTGGGGCTGAGGAAGAAGCACATCGGGCCCTCATGCAAAG
 TTTTCTTTGCATCGGATCCCATCAAATAGTGAGAGCCAGAGGAGTACATGTTTGATGAGAACGGTGA
 ACAGTACTTGGACTGCATCAACAATGTTGCCATGTGGGACACTGTCACCCAGGAGTGGTCAAAGCTGCC
 CTGAAACAGATGGAAGTCTAAATACAAATCTCGATTCTCCACGACAACATTGTTGAGTATGCCAAAC
 GCCTTTCAGCAACTCTGCCGGAGAACTCTGTGTTGTTATTTTACAAATTCAGGATCCGAAGCCAAACGA
 CTTAGCCTTACGCCTGGCTCGGCAGTTCAGAGGCCACCAGGATGTGATCACTCTTGACCATGCTTACCAT
 GGTACCTATCATCCTTAATTGAGATTAGCCATATAAGTTTCAGAAAGGAAAAGATGTCAAAAAAGAAAT
 TTGTACATGTGGACCAACTCCAGATACTACAGAGGAAAATATAGAGAAGACCATGCAGACTCAGCCAG
 TGCTTATGCAGATGAAGTGAAGAAAATCATTGAAGATGCTCATAACAGTGAAGGAAGATTGCTGCCTTT
 ATTGCTGAATCCATGCAGAGTTGTGGCGGACAAAATAATCCTCCAGCAGGCTACTTCCAGAAAGTGGCAG
 AATATGTACACGGTGCAGGGGTGTGTTATAGCTGATGAAGTCAAGTGGGCTTTGGCAGAGTTGGGAA
 ACATTTCTGGAGCTTCCAGATGTATGGTGAAGACTTTGTTCCAGACATCGTCACAATGGGAAAACCGATG
 GGCAACGGCCACCCGGTGGCATGTGTGGTAACAACCAAAGAAATGCAGAAGCCTTCAGCAGCTCTGGGA
 TGGAAATTTTTAATACGTATGGAGGAAATCCAGTATCTTGTGCTGTTGGTTTGGCTGTCTGGATATAAT
 TGAATAAAGACCTTCAAGGAAATGCCAAGAGAGTAGGGAATTATCTCACTGAGTTACTGAAAAACAG
 AAGGCTAAACACACTTTGATAGGAGATATTAGGGGCATTGGCCTTTTTATTGGAATTGATTTAGTGAAGG
 ACCATCTGAAAAGGACCCCTGCCACAGCTGAAGCTCAGCACATCATCTACAAGATGAAAGAAAAACGAGT
 GCTTCTCAGTGCCGATGGACCTCATAGAAATGTACTTAAAAATAAAACCACCTATGTGCTTCACTGAAGAA
 GATGCAAAGTTTATGGTGGACCAACTTGTAGGATTCTAACAGTTTTAGAAGAAGCTATGGGAACAAAA
 CCGAAAGTGTGACCTCTGAGAATACTCCATGCAAAAACAAAGATGCTGAAAGAAGCCACATAGAAGTCT
 TAGGGACAGCACCCTGACTCCAAGAAAATCCCAGCAGAAAGAGAAATGGAATGTGCACGGATACACAT
 TCACTGCTCAGTAAGAGGCTCAAGACA

ACGCGTACGCGGCCGCTCGAGCAGAAACTCATCTCAGAAGAGGATCTGGCAGCAAATGATATCCTGGATT
 ACAAGGATGACGACGATAAGGTTTAA

Protein Sequence:

>RC205429 protein sequence
 Red=Cloning site Green=Tags(s)

MCELYSKRDTLGLRKKHIGPSCVFFASDPIKIVRAQRQYMFDENGEQYLDCINNVAVHGHCHPGVVKAA
 LKQMELLNTNSRFLHDNIVEYAKRLSATLPEKLSVCYFTNSGSEANDLALRLARQFRGHQDVITLDHAYH
 GHLSSLIEISPYKFQKGDVKKEFVHVAPTPDITYRGKYREDHADSASAYADEVKKIIEDAHNSGRKIAAF
 IAESMQSCGGQIIPPAGYFQKVAEYVHGAGGVFIADEVQVGFGRVGFHWSFQMYGEDFVDPDIVTMGKPM
 GNGHPVACVVTTKEIAEAFSSSGMEYFNTYGGNPVSCAVGLAVLDIENEDLQGNKRVGNLYL TELLKKQ
 KAKHTLIGDIRGIGLFIGIDLVDHLKRTPATAEAQHIIYKMKERVLLSADGPHRNVLKI KPPMCFTEE
 DAKFMVDQLDRILTVLEEAMGKTESVTSENTPCKTKMLKEAHIELLRDSTTDSKENPSRKRNGMCTDTH
 SLLSKRLKT

TRTRPLEQKLI SEEDLAANDILDYKDDDDKV

Chromatograms:

https://cdn.origene.com/chromatograms/mk6537_a07.zip

Restriction Sites:

Sgfl-MluI

Cloning Scheme:


ACCN: NM_031279

ORF Size: 1497 bp

OTI Disclaimer: The molecular sequence of this clone aligns with the gene accession number as a point of reference only. However, individual transcript sequences of the same gene can differ through naturally occurring variations (e.g. polymorphisms), each with its own valid existence. This clone is substantially in agreement with the reference, but a complete review of all prevailing variants is recommended prior to use. [More info](#)

OTI Annotation: This clone was engineered to express the complete ORF with an expression tag. Expression varies depending on the nature of the gene.

Components: The ORF clone is ion-exchange column purified and shipped in a 2D barcoded Matrix tube containing 10ug of transfection-ready, dried plasmid DNA (reconstitute with 100 ul of water).

Reconstitution Method:

1. Centrifuge at 5,000xg for 5min.
2. Carefully open the tube and add 100ul of sterile water to dissolve the DNA.
3. Close the tube and incubate for 10 minutes at room temperature.
4. Briefly vortex the tube and then do a quick spin (less than 5000xg) to concentrate the liquid at the bottom.
5. Store the suspended plasmid at -20°C. The DNA is stable for at least one year from date of shipping when stored at -20°C.

RefSeq: [NM_031279.4](#)

RefSeq Size: 2133 bp

RefSeq ORF: 1500 bp

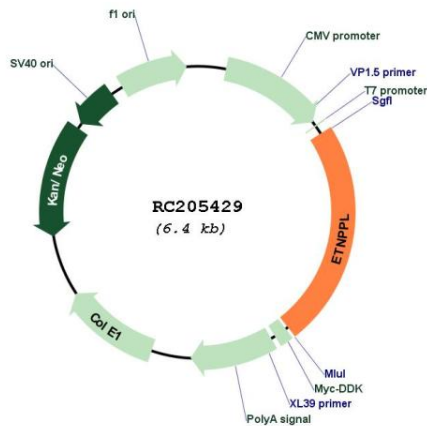
Locus ID: 64850

UniProt ID: [Q8TBG4](#)

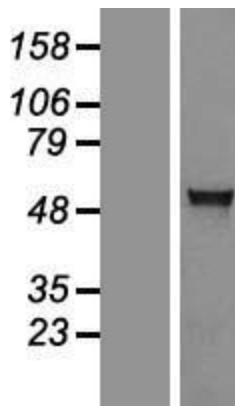
Cytogenetics: 4q25

Domains: aminotran_3
Protein Families: Druggable Genome
MW: 55.7 kDa
Gene Summary: Catalyzes the pyridoxal-phosphate-dependent breakdown of phosphoethanolamine, converting it to ammonia, inorganic phosphate and acetaldehyde.[UniProtKB/Swiss-Prot Function]

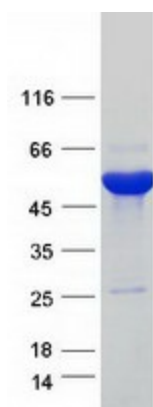
Product images:



Circular map for RC205429



Western blot validation of overexpression lysate (Cat# [LY410615]) using anti-DDK antibody (Cat# [TA50011-100]). Left: Cell lysates from untransfected HEK293T cells; Right: Cell lysates from HEK293T cells transfected with RC205429 using transfection reagent MegaTran 2.0 (Cat# [TT210002]).



Coomassie blue staining of purified ETNPPL protein (Cat# [TP305429]). The protein was produced from HEK293T cells transfected with ETNPPL cDNA clone (Cat# RC205429) using MegaTran 2.0 (Cat# [TT210002]).