

## Product datasheet for **RC205425**

### **NXNL2 (NM\_145283) Human Tagged ORF Clone**

#### Product data:

**Product Type:** Expression Plasmids  
**Product Name:** NXNL2 (NM\_145283) Human Tagged ORF Clone  
**Tag:** Myc-DDK  
**Symbol:** NXNL2  
**Synonyms:** C9orf121; RDCVF2; RdCVF2L  
**Mammalian Cell Selection:** Neomycin  
**Vector:** pCMV6-Entry (PS100001)  
**E. coli Selection:** Kanamycin (25 ug/mL)  
**ORF Nucleotide Sequence:** >RC205425 ORF sequence  
**Red=Cloning site Blue=ORF Green=Tags(s)**

TTTTGTAATACGACTCACTATAGGGCGGCCGGAATTCGTCGACTGGATCCGGTACCGAGGAGATCTGCC  
GCC**CGATCGCC**

ATGGTTGACATTCTGGGCGAGCGGCACCTGGTGACCTGTAAGGGCGCGACGGTGGAGGCCGAGGCGGCGC  
TGCAGAACAAGGTGGTGGCACTGTACTTCGCGCGGCCCGGTGCGCGCCGAGCCGCGACTTCACGCCGCT  
GCTCTGCGACTTCTATACGGCGCTGGTGGCCGAGGCGCGGCCCGCCCTTCGAAGTGGTCTTCGTG  
TCAGCCGACGGCAGCTGCCAGGAGATGCTGGACTTCATGCGCGAGCTGCATGGCGCTGGCTGGCGCTGC  
CCTTCCACGACCCTACCGCAACGGAGTCTCGCTCTGTTGCCAGGCTGGAGTGCAGTGGCGTGATCTT  
AGCTCACTGCAACCTTTGCTCCTGGTTCAAGTGATTCTCTAGCCTTAGCCTCC

**ACGCGT**ACGCGGCCGCTCGAGCAGAACTCATCTCAGAAGAGGATCTGGCAGCAAATGATATCCTGGATT  
ACAAGGATGACGACGATAAGGTTTAA

**Protein Sequence:** >RC205425 protein sequence  
**Red=Cloning site Green=Tags(s)**

MVDILGERHLVTCKGATVEAEAALQNKVVALYFAARCAPSRDFTPLLCDFYTALVAEARRPAPFEVVFV  
SADGSCQEMLDFMRELHGAWLALPFHDPYRQRSLALLPRLECSGIVLAHCNLCLLGSSDSLALAS

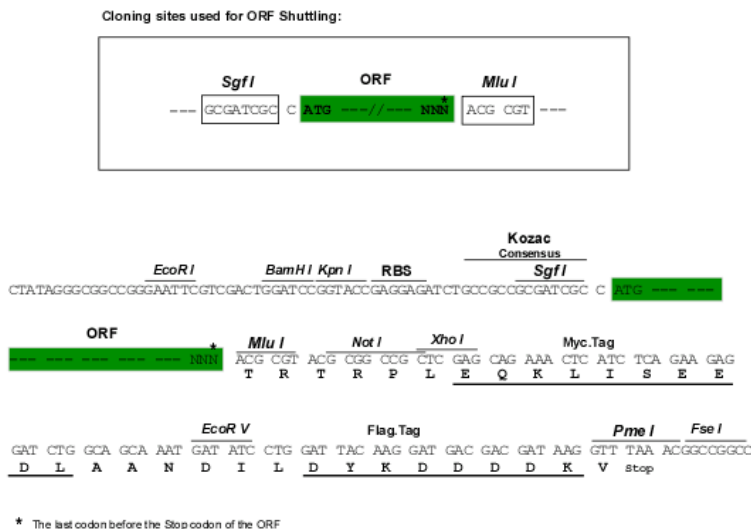
**TR**TRPLEQKLISEEDLAANDILDYKDDDDKV

**Chromatograms:** [https://cdn.origene.com/chromatograms/mk6312\\_f05.zip](https://cdn.origene.com/chromatograms/mk6312_f05.zip)

**Restriction Sites:** SgfI-MluI



[View online »](#)

**Cloning Scheme:**


**ACCN:** NM\_145283

**ORF Size:** 405 bp

**OTI Disclaimer:** The molecular sequence of this clone aligns with the gene accession number as a point of reference only. However, individual transcript sequences of the same gene can differ through naturally occurring variations (e.g. polymorphisms), each with its own valid existence. This clone is substantially in agreement with the reference, but a complete review of all prevailing variants is recommended prior to use. [More info](#)

**OTI Annotation:** This clone was engineered to express the complete ORF with an expression tag. Expression varies depending on the nature of the gene.

**Components:** The ORF clone is ion-exchange column purified and shipped in a 2D barcoded Matrix tube containing 10ug of transfection-ready, dried plasmid DNA (reconstitute with 100 ul of water).

- Reconstitution Method:**
1. Centrifuge at 5,000xg for 5min.
  2. Carefully open the tube and add 100ul of sterile water to dissolve the DNA.
  3. Close the tube and incubate for 10 minutes at room temperature.
  4. Briefly vortex the tube and then do a quick spin (less than 5000xg) to concentrate the liquid at the bottom.
  5. Store the suspended plasmid at -20°C. The DNA is stable for at least one year from date of shipping when stored at -20°C.

**RefSeq:** [NM\\_145283.1](#), [NP\\_660326.1](#)

**RefSeq Size:** 1476 bp

**RefSeq ORF:** 408 bp

**Locus ID:** 158046

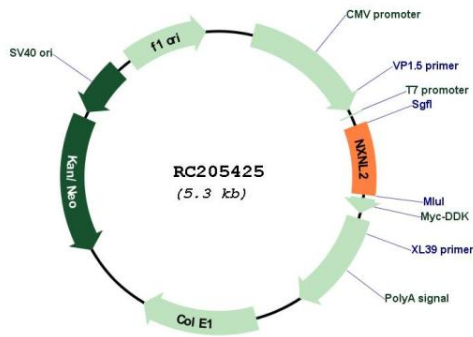
**UniProt ID:** [Q5VZ03](#)

**Cytogenetics:** 9q22.1

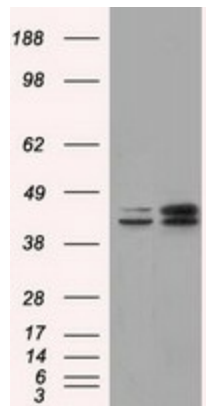
**MW:** 14.7 kDa

**Gene Summary:** May be involved in the maintenance of both the function and the viability of sensory neurons, including photoreceptors and olfactory neurons.[UniProtKB/Swiss-Prot Function]

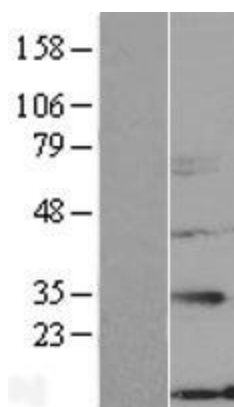
**Product images:**



Circular map for RC205425



HEK293T cells were transfected with the pCMV6-ENTRY control (Cat# [PS100001], Left lane) or pCMV6-ENTRY NXNL2 (Cat# RC205425, Right lane) cDNA for 48 hrs and lysed. Equivalent amounts of cell lysates (5 ug per lane) were separated by SDS-PAGE and immunoblotted with anti-NXNL2(Cat# [TA501246]). Positive lysates [LY408006] (100ug) and [LC408006] (20ug) can be purchased separately from OriGene.



Western blot validation of overexpression lysate (Cat# [LY408006]) using anti-DDK antibody (Cat# [TA50011-100]). Left: Cell lysates from untransfected HEK293T cells; Right: Cell lysates from HEK293T cells transfected with RC205425 using transfection reagent MegaTran 2.0 (Cat# [TT210002]).