

## Product datasheet for **RC205418**

### **GALNTL5 (NM\_145292) Human Tagged ORF Clone**

#### **Product data:**

Product Type:	Expression Plasmids
Product Name:	GALNTL5 (NM_145292) Human Tagged ORF Clone
Tag:	Myc-DDK
Symbol:	GALNTL5
Synonyms:	GalNAc-T5L; GALNACT19; GALNT15
Mammalian Cell Selection:	Neomycin
Vector:	pCMV6-Entry (PS100001)
E. coli Selection:	Kanamycin (25 ug/mL)



[View online »](#)

**ORF Nucleotide Sequence:**

>RC205418 ORF sequence  
 Red=Cloning site Blue=ORF Green=Tags(s)

TTTTGTAATACGACTCACTATAGGGCGGCCGGAATTCGTCGACTGGATCCGGTACCGAGGAGATCTGCC  
 GCC**CGGATCGCC**

ATGAGAAATGCCATAATTCAAGTTTATCTATGGGTCCTTGACATTTGGGATCTGGACAGCTCTGTTAT  
 TCATATATTTGCACCATAATCATGTGAGCAGCTGGCAGAAGAAAAGCCAGGAGCCCTGTGACGTTGGTC  
 CCTGGAAAAAAGTGCATCAGCAAATTATCTATGGCTCAGAGCAAATACCAAAACCTCATGTAATAGTC  
 AAAAGGACTGATGAAGATAAAGCAAAGTCTATGTTAGGTACAGATTTTAAACCATACAAACCCAGAACTTC  
 ATAAGAAGCTTTTAAAATATGGATTTAATGTGATTATCAGTAGAAGCTTGGGCATCGAAAGAGAAGTGCC  
 AGATACCAGGAGTAAAATGCGTCTTCAAAAACATTACCCAGCCCGCTCCCGACTGCCAGCATTGTCATT  
 TGCTTCTATAATGAAGAATGTAATGCCTTGTTCAGACCATGTCCAGTGTACGAACCTCACGCCACACT  
 ATTTTCTTGAAGAAATATTTTGGTAGATGACATGAGCAAAGTTGATGATTTGAAAGAAAACTAGACTA  
 TCACCTGGAAACTTTTCGGGAAAGGTTAAAATAAAGAAACAAAAAGAGAGGGGCTGATTCGAGCA  
 AGGCTGATTGGAGCTTCTCATGCTTCAGGGGATGTTCTGGTGTCTGGACAGCCACTGTGAGGTGAACA  
 GAGTATGGCTGGAGCCCTGCTGCATGCCATTGCCAAGGACCCCAAAATGGTGGTGTGCCCCCTGATAGA  
 TGTCAATTGATGATAGAAGCTCTGGAGTATAAGCCCTCTCCTCTTGTAAAGGGAACTTTTGATTGGAACCTA  
 CAATTTAAATGGGATAATGTTTTCTCTTATGAGATGGATGGACCAGAAGGATCTACTAAACCAATCCGGT  
 CACCTGCAATGTCTGGAGGAATTTTGTATACGTCGGCATTATTTAATGAAATGGACAGTATGACAA  
 GGATATGGATTTTGGGGAAGAGAAAATTTGGAACCTTCACTAAGGATCTGGATGTGTGGAGGCCAACTC  
 TTTATAATCCCCTGCTCTCGAGTAGGACATATCAGTAAGAAACAAACTGGAAAACCTTCTACAATCATCA  
 GTGCTATGACACATAACTACCTAAGACTGGTGCACGTTTGGCTGGATGAATATAAGGAGCAGTTTTTTCT  
 TCGAAAGCCTGGTCTGAAATATGTCACCTACGGAAATATTCGCGAGCGTGTGAGTTAAGGAAACGACTG  
 GTTGCAAGTCATTTTCAGTGGTATTTGGATAATGTCTTCCAGAGTTGGAGGCATCTGTGAACAGCCTG

**ACGCGT**ACGCGGCCGCTCGAGCAGAACTCATCTCAGAAGAGGATCTGGCAGCAAATGATATCCTGGATT  
 ACAAGGATGACGACGATAAGGTTTAA

**Protein Sequence:**

>RC205418 protein sequence  
 Red=Cloning site Green=Tags(s)

MRNAIIQGLFYGSLTFGIWTALLFIYLHNNHVSSWQKKSQEPLSAWSPGKKVHQQIIYGSEQIPKPHVIV  
 KRTDEDKAKSMLGTFNHTNPELHKELLKYGFNVIISRSLGIEREVDPTRSKMRLQKHYPARLPTASIVI  
 CFYNEECNALFQTMSSVTNLTPHYFLEEIILVDDMSKVDDLKEKLDYHLETFRGKVKIIRNKKREGLIRA  
 RLIGASHASGDVLFVLDHCEVNRVWLEPLLHAIKDPKMVVCPLIDVIDDRTLEYKPSPLVRGTFDWNL  
 QFKWDNVFSYEMDGPSTKPIRSPAMSGGIFAIRRHVFNEIGQYDKMDFWGRENLELSLRIWMCQQQL  
 FIIPCSRVGHIKSKQTGKPTIISAMTHNYLRLVHVWLDEYKEQFFLRKPLKYVTYGNIRERVELRKRL  
 GCKSFQWYLDNVFPELEASVNSL

**TR**TRPLEQKLISEEDLAANDILDYKDDDDKV

**Chromatograms:**

[https://cdn.origene.com/chromatograms/mk6536\\_c02.zip](https://cdn.origene.com/chromatograms/mk6536_c02.zip)

**Restriction Sites:**

Sgfl-Mlul

**Cloning Scheme:**


**ACCN:** NM\_145292

**ORF Size:** 1329 bp

**OTI Disclaimer:** The molecular sequence of this clone aligns with the gene accession number as a point of reference only. However, individual transcript sequences of the same gene can differ through naturally occurring variations (e.g. polymorphisms), each with its own valid existence. This clone is substantially in agreement with the reference, but a complete review of all prevailing variants is recommended prior to use. [More info](#)

**OTI Annotation:** This clone was engineered to express the complete ORF with an expression tag. Expression varies depending on the nature of the gene.

**Components:** The ORF clone is ion-exchange column purified and shipped in a 2D barcoded Matrix tube containing 10ug of transfection-ready, dried plasmid DNA (reconstitute with 100 ul of water).

**Reconstitution Method:**

1. Centrifuge at 5,000xg for 5min.
2. Carefully open the tube and add 100ul of sterile water to dissolve the DNA.
3. Close the tube and incubate for 10 minutes at room temperature.
4. Briefly vortex the tube and then do a quick spin (less than 5000xg) to concentrate the liquid at the bottom.
5. Store the suspended plasmid at -20°C. The DNA is stable for at least one year from date of shipping when stored at -20°C.

**RefSeq:** [NM\\_145292.2](#), [NP\\_660335.1](#)

**RefSeq Size:** 1738 bp

**RefSeq ORF:** 1332 bp

**Locus ID:** 168391

**UniProt ID:** [Q7Z4T8](#)

**Cytogenetics:** 7q36.1

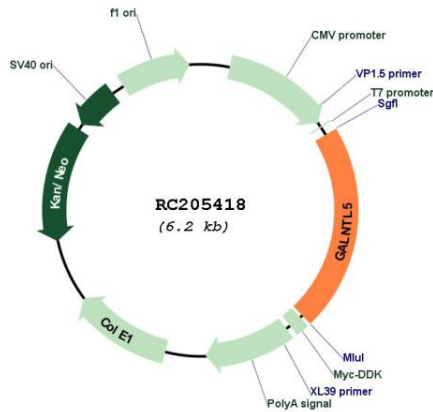
**Protein Families:** Transmembrane

**Protein Pathways:** Metabolic pathways, O-Glycan biosynthesis

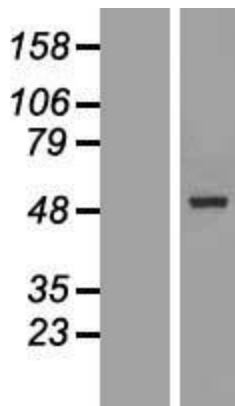
**MW:** 51.5 kDa

**Gene Summary:** Probable inactive glycosyltransferase required during spermatid development. May participate in protein loading into the acrosomes and accumulation of ubiquitin-proteasome systems around the head-tail coupling apparatus region.[UniProtKB/Swiss-Prot Function]

**Product images:**



Circular map for RC205418



Western blot validation of overexpression lysate (Cat# [LY408014]) using anti-DDK antibody (Cat# [TA50011-100]). Left: Cell lysates from untransfected HEK293T cells; Right: Cell lysates from HEK293T cells transfected with RC205418 using transfection reagent MegaTran 2.0 (Cat# [TT210002]).