

## Product datasheet for **RC205417**

### CCDC7 (NM\_145023) Human Tagged ORF Clone

#### Product data:

Product Type:	Expression Plasmids
Product Name:	CCDC7 (NM_145023) Human Tagged ORF Clone
Tag:	Myc-DDK
Symbol:	CCDC7
Synonyms:	BIOT2; BioT2-A; BioT2-B; BioT2-C; C10orf68
Mammalian Cell Selection:	Neomycin
Vector:	pCMV6-Entry (PS100001)
E. coli Selection:	Kanamycin (25 ug/mL)



[View online »](#)

**ORF Nucleotide Sequence:**

>RC205417 ORF sequence  
 Red=Cloning site Blue=ORF Green=Tags(s)

TTTTGTAATACGACTCACTATAGGGCGGCCGGAATTCGTCGACTGGATCCGGTACCGAGGAGATCTGCC  
 GCC**CGCATCGCC**

ATGAAACCAGTAAAGCATCTGTTGACCACCAGTAAACAAATCGGCAATGTTCCAGCATTAACTACTAAAA  
 AAGGACTACATAATTTACCATTATCACCTGAGCTAAAGGAAAAACATAATGCAAAATTAATTCATGATAA  
 AATTGAACCAATGGTCTTAAGATCTCCACCAACAGGAGAATCCATTTTACGGTATGCTTTGCCATTCCA  
 TCGAGTAAAGACAAAGAACTTACTACCAGAAGATGAAATGATCGGAAAAATATCAAACATCTGAAGATGG  
 TTGTTTCCACTTTGGAAGAACTTATGGACATTGCGATCAGAATGGAGAAGAACCATTTGTAAGCATGA  
 ACATGAAGAATTATCTTTATCTGTTGGGGATGATATGAATTCATTCTTGACATATTGTTCCGAATTTGCA  
 GCTCAGCTAGAAGAAGCACTTAAAGAAGAACAAAATATTTGGAATCTCTTTTTAAGTGGTTTCAGTGCC  
 AGGTCAATCAGATGGAAGAAATAAGTAAAGATCAAACCTTTTACAAGCAGAGCCTCCAAAACCTGACAA  
 AACAGTCATTTTAAATATTGCAGAAATAGTAAGGCTTGTACAAAGATTTGAAGAAGTGAAGAATCGCCTT  
 AAACAGAGGTCTAAATCCTCCGTGAAAGTCATGTTGTCTAAAACCTATGGATAAAGAAAAATCGACCAGAAG  
 CAGTGAAGGTTGTGAAGCTCTGGCACAGAAAAATTGAAGAATTCTTAGAAGCCCACTCAACTGATGAATT  
 TAAAGATGTTTCTGCAACAGAACCACAAACTGCTCATTCAATGACTAATCGATTTAATGCCATGTTGAAA  
 GTATTTGAAAACAGGCAAAATATGTTGGAGAGCTGTAATGATCAAGTTTTGTTAGATGCTGAATACA  
 AACAGATGCAGTGTGATTTTCAGTTGTTATCAGAAGAGAAGTTGGTGTGGAAAAATGAACTACAAAAAGTT  
 GAAGGACAAAGAGAAAACCTAAGCCTACAAATAATCGAACAAAGAAAGCTGTGAAAACAGTGAAGAAAAA  
 GACAAAGGAAAACTCTGAGGATTCAGAAAAGAAGATGTCTCCAGAAAAAGAGTTTAAAAATAAAGAAGATT  
 TGGATCAAGTACAGAAAGTAGCACGTCTGAAAATTGAGAACAAAGTCTTCAGGACAAATGAAACAGGC  
 TTTACAGGAAGCTGAAAAGCTAAGCATCAACTTAACTATTTTCTAAATCAAGAGAAGTTACTTAAAAGT  
 GAGGGGAAAACTGAGACAACAATGCAAGTGGGTAAATAGTCAAACAAAAGTTAAAGGTGAAGATTCAAAAA  
 ATATACCATTGGAGAAAGAAACAAGAAAATCACTGGTTTCAGATTCAGGTGGACAAAGGACAAGTGATAA  
 AATCCAAGAATATCCACAGATCACTGCCAAAAGCGGAAGACTGATTGAAAAGAGATGC

**ACGCGT**ACGCGGCCGCTCGAGCAGAAACTCATCTCAGAAGAGGATCTGGCAGCAATGATATCCTGGATT  
 ACAAGGATGACGACGATAAGGTTTAA

**Protein Sequence:**

>RC205417 protein sequence  
 Red=Cloning site Green=Tags(s)

MKPVKHLTTSNKSANVPALTTKKGLHNLPLSPELKEKHNAKLIHDKIEPMVLRSPPTGESILRYALPIP  
 SSKTKNLLPEDEMIGKIIKHLKVVSTLEETYGHCDQNGEFPVKHEHEELSLVGDMDNSFLTYCSQFA  
 AQLLEEALKEEQNILESLFKWFQVQVNMEEISKDQTLQAEPPKPKDKTVILNIAEIVRLVQRFEELKNRL  
 KQRSSSVKVMLSKTMDKENRPEAVKSCEALAQKIEEFLEAHSTDEFKDVSAPEPQTAHSMNRFNAMLK  
 VFENQANMLERAVNDQVLLDAEYKQMOCDFQLLSEEKLVLENELQKLDKEKTKPTNRRTKKAVKTVKVK  
 DKGKSEDSSEKMSPEKEFKIKEDLDQVQKVARLEIENKVLQEQLKQALQEAEKAKHQLNYFLNQEKLLKS  
 EGKTETTMQVGNSTKVKGEDSKNIPLEKETRKSLSVSDSGGQRTSDKIQEYQPITAQSGRLIEKRC

**TR**TRPLEQKLISEEDLAANDILDYKDDDDKV

**Chromatograms:**

[https://cdn.origene.com/chromatograms/mk6314\\_c05.zip](https://cdn.origene.com/chromatograms/mk6314_c05.zip)

**Restriction Sites:**

Sgfl-Mlul

**Cloning Scheme:**


**ACCN:** NM\_145023

**ORF Size:** 1458 bp

**OTI Disclaimer:** The molecular sequence of this clone aligns with the gene accession number as a point of reference only. However, individual transcript sequences of the same gene can differ through naturally occurring variations (e.g. polymorphisms), each with its own valid existence. This clone is substantially in agreement with the reference, but a complete review of all prevailing variants is recommended prior to use. [More info](#)

**OTI Annotation:** This clone was engineered to express the complete ORF with an expression tag. Expression varies depending on the nature of the gene.

**Components:** The ORF clone is ion-exchange column purified and shipped in a 2D barcoded Matrix tube containing 10ug of transfection-ready, dried plasmid DNA (reconstitute with 100 ul of water).

**Reconstitution Method:**

1. Centrifuge at 5,000xg for 5min.
2. Carefully open the tube and add 100ul of sterile water to dissolve the DNA.
3. Close the tube and incubate for 10 minutes at room temperature.
4. Briefly vortex the tube and then do a quick spin (less than 5000xg) to concentrate the liquid at the bottom.
5. Store the suspended plasmid at -20°C. The DNA is stable for at least one year from date of shipping when stored at -20°C.

**RefSeq:** [NM\\_145023.6](#)

**RefSeq Size:** 2204 bp

**RefSeq ORF:** 1461 bp

**Locus ID:** 79741

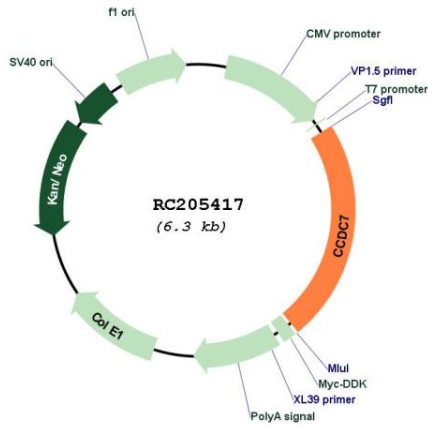
**UniProt ID:** [Q96M83](#)

**Cytogenetics:** 10p11.22

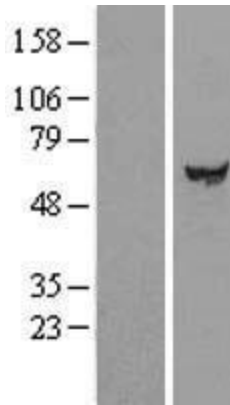
MW: 55.8 kDa

Gene Summary: May play a role in tumorigenesis.[UniProtKB/Swiss-Prot Function]

**Product images:**



Circular map for RC205417



Western blot validation of overexpression lysate (Cat# [LY408084]) using anti-DDK antibody (Cat# [TA50011-100]). Left: Cell lysates from untransfected HEK293T cells; Right: Cell lysates from HEK293T cells transfected with RC205417 using transfection reagent MegaTran 2.0 (Cat# [TT210002]).