

Product datasheet for **RC205415**

ACRBP (NM_032489) Human Tagged ORF Clone

Product data:

Product Type:	Expression Plasmids
Product Name:	ACRBP (NM_032489) Human Tagged ORF Clone
Tag:	Myc-DDK
Symbol:	ACRBP
Synonyms:	CT23; OY-TES-1; SP32
Mammalian Cell Selection:	Neomycin
Vector:	pCMV6-Entry (PS100001)
E. coli Selection:	Kanamycin (25 ug/mL)



[View online »](#)

ORF Nucleotide Sequence:

>RC205415 ORF sequence
 Red=Cloning site Blue=ORF Green=Tags(s)

TTTTGTAATACGACTCACTATAGGGCGGCCGGAATTCGTCGACTGGATCCGGTACCGAGGAGATCTGCC
 GCC**CGGATCGCC**

ATGAGGAAGCCAGCCGCTGGCTTCTTCCCTCACTCCTGAAGGTGCTGCTCCTGCCTCTGGCACCTGCCG
 CAGCCCAGGATTCGACTCAGGCCTCACTCCAGGCAGCCCTCTCTCCTACCGAATACGAACGCTTCTT
 CGCACTGCTGACTCCAACCTGGAAGGCAGAGACTACCTGCCGTCTCCGTGCAACCCACGGCTGCCGGAAT
 CCCCACTCGTCCAGCTGGACCAATATGAAAACCACGGCTTAGTGCCCGATGGTGTCTGTCTCCAACC
 TCCCTTATGCCTCCTGGTTTGTCTTTCTGCCAGTTCCTCACTACCGTTGCTCCAACCAGTCTACTA
 TGCCAAGAGAGTCTGTGTTCCAGCCAGTCTCTATTCTCTCACCTAACACTCTCAAGGAGATAGAAGCT
 TCAGTGAAGTCTACCCACCACGATGACCTCCCCATCTACCCCACTTACAGTGACAGAACGCCAGA
 CCTTCCAGCCCTGGCCTGAGAGGCTCAGCAACAACGTGGAAGAGCTCTACAATCCTCCTGTCCCTGGG
 AGGCCAGGAGCAAGCGCCAGAGCAAGCAGGAGCAAGGAGTGGAGCACAGGCAGGAGCCGACACAAGAA
 CACAAGCAGGAAGAGGGGCAGAAACAGGAAGAGCAAGAAGAGGAACAGGAAGAGGAGGGAAAGCAGGAAG
 AAGGACAGGGGACTAAGGAGGGACGGGAGGCTGTGTCTCAGTGCAGACAGACTCAGAGCCCAAGTTTCA
 CTCTGAATCTCTATTCTAACCCTTCTCTTTTGTCCCGGGTACGAGAAGTAGAGTCTACTCCTATG
 ATAATGGAGAACATCCAGGAGCTCATTGATCAGCCCAGGAAATAGATGAAATGAATGAAATATATGATG
 AGAACTCTACTGGAGAAACCAAAACCTGGCAGCCTCCTGCAGTGCACACAGAGGCCCTTGTGGT
 GCTGTGCTATTCGATCGTGGAGAATACCTGCATCATAACCCACAGCCAAGGCCGGAAGTACATGGAG
 GAGGAGATCCTTGGTTTCGGGAAGTCGGTCTGTGACAGCCTTGGCGGGACACATGTCTACCTGTGCC
 TCTGTGACTTCTGCTCCTTGAAGCTGGAGCAGTGCCTCAGAGGCCAGCCTGCAGCGGCAACAATGCGA
 CACTCCCACAAGACTCCCTTTGTGAGCCCTTGTGCTCCAGAGCCTGTCCATCGGCAACCAGGTA
 GGGTCCCAGAAATCAGGCCGCTTTTACGGGCTGGATTTGTACGGTGGGCTCCACATGGACTTCTGGTGTG
 CCCGGCTTCCACGAAAGGCTGTGAAGATGTCCGAGTCTCTGGGTGGCTCCAGACTGAGTTCCTTAGCTT
 CCAGGATGGGGATTTCCCTACCAAGATTTGTGACACAGACTATATCCAGTACCCAACTACTGTTCTTCC
 AAAAGCCAGCAGTGTCTGATGAGAAACCGCAATCGGAAGGTGTCCCGCATGAGATGTCTGCAGAATGAGA
 CTTACAGTGCCTGAGCCCTGGCAAAAGTGAAGACGTTGTGCTTCGATGGAGCCAGGAGTTCAGCACCTT
 GACTCTAGGCCAGTTCGGA

ACGCGTACGCGGCCGCTCGAGCAGAAACTCATCTCAGAAGAGGATCTGGCAGCAAATGATATCCTGGATT
 ACAAGGATGACGACGATAAGGTTTAA

Protein Sequence:

>RC205415 protein sequence
 Red=Cloning site Green=Tags(s)

MRKPAAGFLPSLLKVLPLAPAAAQDSTQASTPGSPLSPTEYERFFALLTPTWKAETTCLRLATHGCRN
 PTLVQLDQYENHGLVPDGAVCSNLPYASWFESFCQFTHYRCSNHVYAKRVLCSQPVSILSPNTLKEIEA
 SAEVSPPTMTSPISPHFTVTERQTFQPWPERLSNNVEELLQSSLSLGGQEQAPEHKQEQQVEHRQEPTQE
 HKQEQQKQEEQEEQEEEGKQEEGGTKEGREAVSQLQTDSEPKFHSESLSSNPSSFAPRVREVESTPM
 IMENIQELIRSAQEIEMNEIYDENSYWRNQNPGSLLQLPHTEALLVLCYSIVENTCIITPTAKAWKYM
 EEILGFGKSVCDLGRHMSTCALCDFSLKLEQCHSEASLQRQQCDTSHKTPFVSPLLASQSLSIGNQV
 GSPESGRFYGLDLYGGLHMDFWCARLATKGCEDVRVSGWLQTEFLSFQDGFPTKICDIDYIQYPNYCSF
 KSQQCLMRNRNRKYSRMRLQNETYSALSPGKSEDEVLRWSQEFSTLTLGQFG

TRTRPLEQKLISEEDLAANDILDYKDDDDKV

Chromatograms:

https://cdn.origene.com/chromatograms/mk6138_d12.zip

Restriction Sites:

Sgfl-MluI

Cloning Scheme:


ACCN: NM_032489

ORF Size: 1629 bp

OTI Disclaimer: The molecular sequence of this clone aligns with the gene accession number as a point of reference only. However, individual transcript sequences of the same gene can differ through naturally occurring variations (e.g. polymorphisms), each with its own valid existence. This clone is substantially in agreement with the reference, but a complete review of all prevailing variants is recommended prior to use. [More info](#)

OTI Annotation: This clone was engineered to express the complete ORF with an expression tag. Expression varies depending on the nature of the gene.

Components: The ORF clone is ion-exchange column purified and shipped in a 2D barcoded Matrix tube containing 10ug of transfection-ready, dried plasmid DNA (reconstitute with 100 ul of water).

- Reconstitution Method:**
1. Centrifuge at 5,000xg for 5min.
 2. Carefully open the tube and add 100ul of sterile water to dissolve the DNA.
 3. Close the tube and incubate for 10 minutes at room temperature.
 4. Briefly vortex the tube and then do a quick spin (less than 5000xg) to concentrate the liquid at the bottom.
 5. Store the suspended plasmid at -20°C. The DNA is stable for at least one year from date of shipping when stored at -20°C.

RefSeq: [NM_032489.3](#)

RefSeq Size: 1886 bp

RefSeq ORF: 1632 bp

Locus ID: 84519

UniProt ID: [Q8NEB7](#)

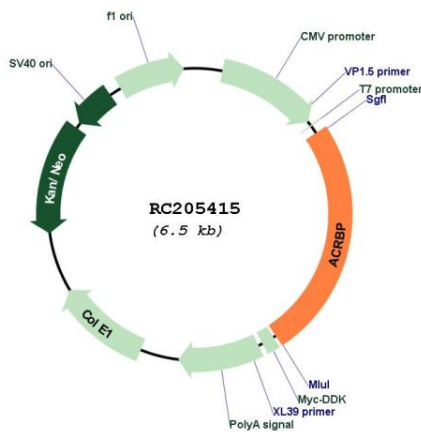
Cytogenetics: 12p13.31

Protein Families: Secreted Protein

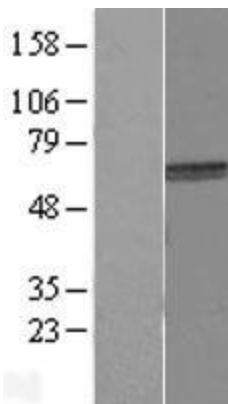
MW: 61.4 kDa

Gene Summary: The protein encoded by this gene is similar to proacrosin binding protein sp32 precursor found in mouse, guinea pig, and pig. This protein is located in the sperm acrosome and is thought to function as a binding protein to proacrosin for packaging and condensation of the acrosin zymogen in the acrosomal matrix. This protein is a member of the cancer/testis family of antigens and it is found to be immunogenic. In normal tissues, this mRNA is expressed only in testis, whereas it is detected in a range of different tumor types such as bladder, breast, lung, liver, and colon. [provided by RefSeq, Jul 2008]

Product images:



Circular map for RC205415



Western blot validation of overexpression lysate (Cat# [LY403164]) using anti-DDK antibody (Cat# [TA50011-100]). Left: Cell lysates from untransfected HEK293T cells; Right: Cell lysates from HEK293T cells transfected with RC205415 using transfection reagent MegaTran 2.0 (Cat# [TT210002]).