

Product datasheet for **RC205408**

CCER1 (NM_152638) Human Tagged ORF Clone

Product data:

Product Type:	Expression Plasmids
Product Name:	CCER1 (NM_152638) Human Tagged ORF Clone
Tag:	Myc-DDK
Symbol:	CCER1
Synonyms:	C12orf12
Mammalian Cell Selection:	Neomycin
Vector:	pCMV6-Entry (PS100001)
E. coli Selection:	Kanamycin (25 ug/mL)
ORF Nucleotide Sequence:	>RC205408 ORF sequence Red=Cloning site Blue=ORF Green=Tags(s)

TTTTGTAATACGACTCACTATAGGGCGGCCGGAATTCGTCGACTGGATCCGGTACCGAGGAGATCTGCC
GCC**CGATCGCC**

ATGACTCAGACCCTCGACACAAGGAAGACCCTCTGAACCTGGGCGCGGTGGCGCGCGGCTGTGGCT
GTGGCTGGGCACACTCGGCCTCCTTGAGCTCCTGGTCGTCCTGCCATCGAAGGCGCCCGGTGCTCCAGC
GTACAATAGACCCGACCGATATAGCCCCAAGCCGAGTATGGGCCCAAGGAAGCAGCCGAAGCAACAG
CACGGCCCGGGCTTTTGGTTCCAACCACCGTGTGCTCTAACTGGGGTGTGGGGAGGGCCCTGGCGCC
CACCCCTCCAGGATTCTGGAAATTCCTGCCCCTGCAAGTGTTCGGGTGTATGGCTGCACCTCT
CTGCTTTTGTGCTGCTCCTGCTGGAGCGGGTCTGGAACCTGGCTGGGTGAAGCCCCAGGCAGGAAG
AAGCGCTGGGGCCGACAGAGGCCGCGGCCTGCGCCACCACCTCGCCACTCCTACCCGCGGAGCCCGCCAG
CGGATGTGAGCACGCTGCCGCGCGCGTCAAGCTGTATGAGTGGAGAGAGCCTGGCATGCGAGCGCCGCC
CAACACCACCAATTCATCATGAACCAGATCTACGAGGACATGAGGCAGCAGGAGAAGGTGGAGCGTCAG
CAGGAGGCGTGCGGGCGCAGAAGGCCACGGTGAAGCGGCGAGGCCCTCCAGCCAGATCCTCCGAAACG
ACGCGCCCCCTGGCGGCAGCAAGGAACTGGGGACTGCAGGAACTCTGTATGGCTTTGTGCAGAAATCC
CTCTAGCATTAGTCCCAACCCAGAGGAAACAGTCTCTTGCCTGCTGGTGGAGAAGAGGAG
GAGAAGAAAATGATGATGAGGAGGATGACCAGGAGGTGTGTATGCAAAGGAGGCGAGGAGGAGG
AAGAAGAGGTGCAAGATGAGGAGGAAGAGGTGCAAGATGAGGAGGAAGAAGAGGTGCAAGAGGCTGAATA
TGTGGAGGAGGAGGAGGAGGAGCTGGAAGAGGAGGAGCTGGAAGAGGAAGAGGAGGTCCTGGAGGAGAAC
GAGCAGAGAGGGGAAGAAATTTCACTTGCCTCTGGAATGCCTTTATCAATCTTGTAGAGGCTGAAGAAA
AGAGAGAGAACTTTATAAGCTGCACTTTTTAAACCCAGAGCAGATAATCCCAAAGTCCACAGGAATC
CCTGTTTCATGGCACAGGACTTTAACTGT

ACGCGTACGCGGCCGCTCGAGCAGAACTCATCTCAGAAGAGGATCTGGCAGCAAATGATATCCTGGATT
ACAAGGATGACGACGATAAGGTTTAA



[View online »](#)

- Reconstitution Method:**
1. Centrifuge at 5,000xg for 5min.
 2. Carefully open the tube and add 100ul of sterile water to dissolve the DNA.
 3. Close the tube and incubate for 10 minutes at room temperature.
 4. Briefly vortex the tube and then do a quick spin (less than 5000xg) to concentrate the liquid at the bottom.
 5. Store the suspended plasmid at -20°C. The DNA is stable for at least one year from date of shipping when stored at -20°C.

RefSeq: [NM_152638.4](#)

RefSeq Size: 2977 bp

RefSeq ORF: 1221 bp

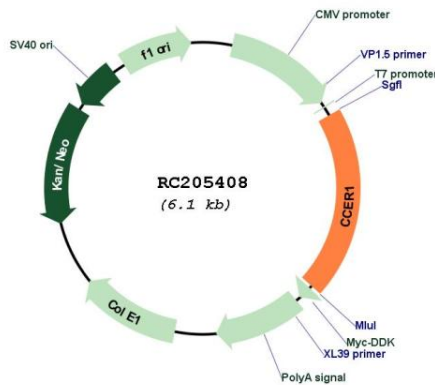
Locus ID: 196477

UniProt ID: [Q8TC90](#)

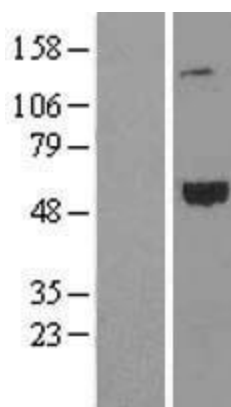
Cytogenetics: 12q21.33

MW: 46.5 kDa

Product images:



Circular map for RC205408



Western blot validation of overexpression lysate (Cat# [LY407369]) using anti-DDK antibody (Cat# [TA50011-100]). Left: Cell lysates from untransfected HEK293T cells; Right: Cell lysates from HEK293T cells transfected with RC205408 using transfection reagent MegaTran 2.0 (Cat# [TT210002]).