

Product datasheet for **RC205406**

PPP3R2 (NM_147180) Human Tagged ORF Clone

Product data:

Product Type: Expression Plasmids
Product Name: PPP3R2 (NM_147180) Human Tagged ORF Clone
Tag: Myc-DDK
Symbol: PPP3R2
Synonyms: PPP3RL
Mammalian Cell Selection: Neomycin
Vector: pCMV6-Entry (PS100001)
E. coli Selection: Kanamycin (25 ug/mL)
ORF Nucleotide Sequence: >RC205406 ORF sequence
Red=Cloning site Blue=ORF Green=Tags(s)

TTTTGTAATACGACTCACTATAGGGCGGCCGGAATTCGTCGACTGGATCCGGTACCGAGGAGATCTGCC
GCC**CGATCGCC**

ATGTCCACAATGGGAAACGAGGCCAGTTACCCGGCGGAGATGTGCTCCCACTTTGACAATGATGAAATTA
AAAGGCTGGGCAGGAGGTTTAAGAAGTTGGACTTGACAAATCAGGGTCTCTGAGCGTGGAGGAGTTCAT
GTCCCTGCCGGAGCTGCCACAAACCCGTTGGTGGCGGAGTGATCGACGCTTCGACACCGACGGTGAT
GGAGAAGTGGACTCAAGGAATTCATCCTGGGGACCTCCAGTTCAGCGTCAAGGGCGACGAGGAGCAGA
AGTTGAGGTTTGGTTCAGCATTACGACATGGATAAAGATGGTACATTTCCAACGGGGAGCTCTCCA
GGTGCTGAAGATGATGGTGGCAACAACCTGACGGACTGGCAGCTCCAGCAGCTGGTCGACAAAACCATC
ATCATCTGGACAAGGATGGCGATGGGAAGATATCCTTTGAGGAATTCAGTGCTGTGGTCAGAGACCTGG
AGATCCACAAGAAGCTGGTCCTCATCGTA

ACGCGTACGCGGCCGCTCGAGCAGAACTCATCTCAGAAGAGGATCTGGCAGCAAATGATATCCTGGATT
ACAAGGATGACGACGATAAGGTTTAA

Protein Sequence: >RC205406 protein sequence
Red=Cloning site Green=Tags(s)

MSTMGNEASYPAEMCSHFDNDEIKRLGRRFKKLDLDSGSLVVEEFMSLPELRHNPLVRRVIDVFDTDGD
GEVDFKEFILGTSQFSVKGDEEQKLRFAFSIYDMDKDGYISNGELFQVLKMMVGNLTDWQLQQLVDKTI
IILDKDGDGKISFEFSAVVRDLEIHKLVIV

TRTRPLEQKLISEEDLAANDILDYKDDDDKV

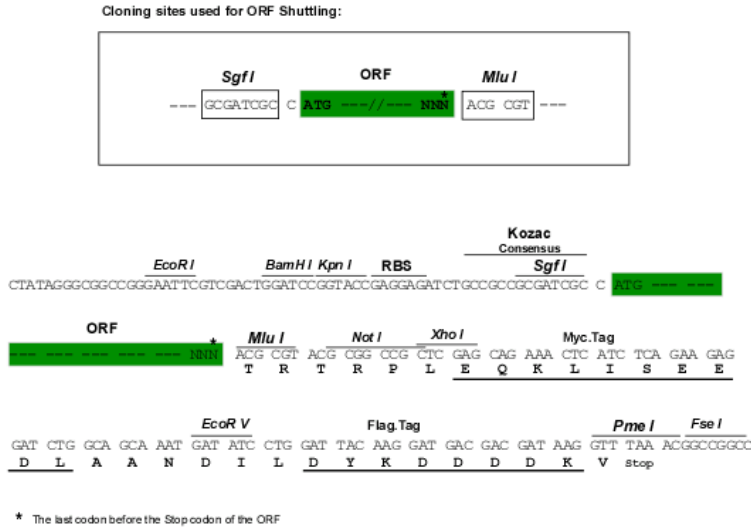
Chromatograms: https://cdn.origene.com/chromatograms/mk6315_e06.zip



[View online »](#)

Restriction Sites: SgfI-MluI

Cloning Scheme:



ACCN: NM_147180

ORF Size: 519 bp

OTI Disclaimer: The molecular sequence of this clone aligns with the gene accession number as a point of reference only. However, individual transcript sequences of the same gene can differ through naturally occurring variations (e.g. polymorphisms), each with its own valid existence. This clone is substantially in agreement with the reference, but a complete review of all prevailing variants is recommended prior to use. [More info](#)

OTI Annotation: This clone was engineered to express the complete ORF with an expression tag. Expression varies depending on the nature of the gene.

Components: The ORF clone is ion-exchange column purified and shipped in a 2D barcoded Matrix tube containing 10ug of transfection-ready, dried plasmid DNA (reconstitute with 100 ul of water).

- Reconstitution Method:**
1. Centrifuge at 5,000xg for 5min.
 2. Carefully open the tube and add 100ul of sterile water to dissolve the DNA.
 3. Close the tube and incubate for 10 minutes at room temperature.
 4. Briefly vortex the tube and then do a quick spin (less than 5000xg) to concentrate the liquid at the bottom.
 5. Store the suspended plasmid at -20°C. The DNA is stable for at least one year from date of shipping when stored at -20°C.

Note: Plasmids are not sterile. For experiments where strict sterility is required, filtration with 0.22um filter is required.

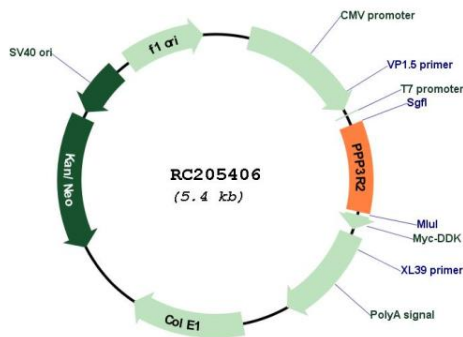
RefSeq: [NM_147180.3](#)

RefSeq Size: 3401 bp

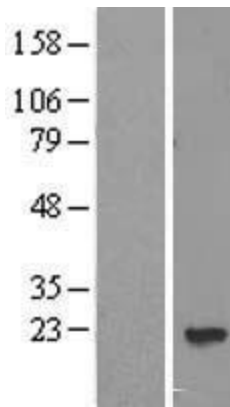
RefSeq ORF: 513 bp

Locus ID: 5535
UniProt ID: [Q96LZ3](#)
Cytogenetics: 9q31.1
Protein Families: Phosphatase
Protein Pathways: Alzheimer's disease, Amyotrophic lateral sclerosis (ALS), Apoptosis, Axon guidance, B cell receptor signaling pathway, Calcium signaling pathway, Long-term potentiation, MAPK signaling pathway, Natural killer cell mediated cytotoxicity, Oocyte meiosis, T cell receptor signaling pathway, VEGF signaling pathway, Wnt signaling pathway
MW: 19.9 kDa
Gene Summary: Regulatory subunit of calcineurin, a calcium-dependent, calmodulin stimulated protein phosphatase. Confers calcium sensitivity.[UniProtKB/Swiss-Prot Function]

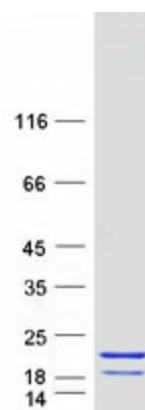
Product images:



Circular map for RC205406



Western blot validation of overexpression lysate (Cat# [LY407775]) using anti-DDK antibody (Cat# [TA50011-100]). Left: Cell lysates from untransfected HEK293T cells; Right: Cell lysates from HEK293T cells transfected with RC205406 using transfection reagent MegaTran 2.0 (Cat# [TT210002]).



Coomassie blue staining of purified PPP3R2 protein (Cat# [TP305406]). The protein was produced from HEK293T cells transfected with PPP3R2 cDNA clone (Cat# RC205406) using MegaTran 2.0 (Cat# [TT210002]).