

Product datasheet for **RC205405**

APOBEC4 (NM_203454) Human Tagged ORF Clone

Product data:

Product Type:	Expression Plasmids
Product Name:	APOBEC4 (NM_203454) Human Tagged ORF Clone
Tag:	Myc-DDK
Symbol:	APOBEC4
Synonyms:	C1orf169
Mammalian Cell Selection:	Neomycin
Vector:	pCMV6-Entry (PS100001)
E. coli Selection:	Kanamycin (25 ug/mL)
ORF Nucleotide Sequence:	>RC205405 ORF sequence Red=Cloning site Blue=ORF Green=Tags(s)

TTTTGTAATACGACTCACTATAGGGCGCCGGGAATTCGTCGACTGGATCCGGTACCGAGGAGATCTGCC
GCC**CGGATCGCC**

ATGGAGCCCATATATGAGGAGTACCTAGCAAATCATGGAACAATAGTAAAACCATATTACTGGCTAAGCT
TCTCTCTCGATTGCTCTAATTGTCCTTACCATATTCGAACAGGTGAAGAAGCAAGAGTTTCCCTCACAGA
ATTTTGTGAGATTTTGGATTCCCTTATGGGACAACATTTCTCAAACAAAACACCTCACATTTTATGAA
CTAAAACTTCTCTGGTAGCCTGGTGCAAAGGGCCATGCTAGCAGTTGCACTGGGAATTATATCCATC
CAGAATCAATGCTCTTTGAAATGAATGGTTATCTTGACTCAGCCATATAACAATAATGACAGCATCAGGCA
TATCATTCTGTATCCAACAACCTCCCTTGTAAATGAAGCTAACCACTGCTGCATCAGCAAATGTATAAT
TTCTGATTACGTATCCAGGCATCACTCTTAGTATTTATTTTTCTCAGCTCTATCACTGAGATGGACT
TTCTGCCTCAGCATGGAACCGGAAGCTCTCCGGAGCCTGGCCAGCTTATGGCCGCGGGTTGTTTTGAG
TCCAATAAGTGGTGGATCTGGCATTCTGTTCTCCACAGCTTTATAAGTGGTGTCTCAGGATCACATGTT
TTTCAGCCATTTAACTGGGAGAGCACTGGCTGACAGGCACAACGCATATGAAATCAATGCCATAACAG
GCGTAAAACCTTACTTCACTGATGTTCTTCTCCAGACAAAAGGAATCCAACACAAAAGCTCAGGAGGC
TTTAGAGAGCTACCCCTTAAACAATGCCTTTCCTGGACAGTTTTTTCAAATGCCGAGTGGACAACCTCAA
CCCAACTACCTCCAGACCTCAGGGCTCCTGTTGTTTTGTGCTAGTGCCTCTCAGGACTTACCACCAA
TGCAATATGGGCCAAAACCCAAATAAACCCAGGAATATCGTAAGGCACTTAAATATGCCTCAAATGTCATT
CCAGGAAACCAAGGACCTTGAAGGCTTCCCACTGGAAGGTCAGTGGAGATAGTGAAATCACAGAACAG
TTTGCAAGTAGCAAGGAGGCAGATGAAAAGAAGAAGAAGAAAGGGAAGAAA

ACGCGTACGCGGCCGCTCGAGCAGAAACTCATCTCAGAAGAGGATCTGGCAGCAAATGATATCCTGGATT
ACAAGGATGACGACGATAAGGTTTAA



[View online »](#)

Protein Sequence: >RC205405 protein sequence
Red=Cloning site Green=Tags(s)

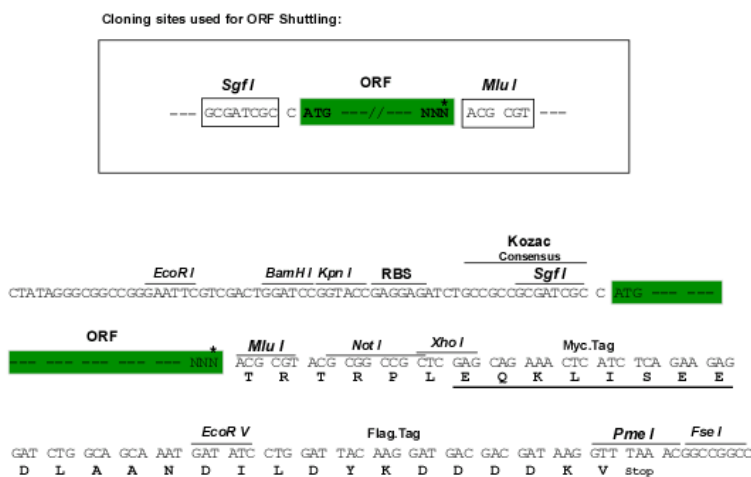
MEPIYEEYLANHGTVKPYWLSFSLDCSNCPYHIRTGEEARVSLTEFCQIFGFPYGTTFPQTKHLTFYE
 LKTSSGSLVQKGHASSCTGNYIHPESMLFEMNGYLDSAIYNNDISIRHIILYSNNSPCNEANHCCISKMYN
 FLITYPGITLSIYFSQLYHTEMDFPASAWNREALRSLASLWPRVLSPISSGGIWHSVLHSFISGVSGSHV
 FQPILTGRALADRHAYEINAITGVKPYFTDVLQTKRNPNTKAQEALSYPLNNAFFGQFFQMPSGQLQ
 PNLPPDLRAPVVFVLPVLRDLPPMHMGQNPKNPRNIVRHLNMPQMSFQETKDLGRLPTGRSVEIVEITEQ
 FASSKEADEKKKKKGKK

TRTRPLEQKLISEEDLAANDILDYKDDDDKV

Chromatograms: https://cdn.origene.com/chromatograms/mk6315_d07.zip

Restriction Sites: SgfI-MluI

Cloning Scheme:



* The last codon before the Stop codon of the ORF

ACCN: NM_203454

ORF Size: 1101 bp

OTI Disclaimer: The molecular sequence of this clone aligns with the gene accession number as a point of reference only. However, individual transcript sequences of the same gene can differ through naturally occurring variations (e.g. polymorphisms), each with its own valid existence. This clone is substantially in agreement with the reference, but a complete review of all prevailing variants is recommended prior to use. [More info](#)

OTI Annotation: This clone was engineered to express the complete ORF with an expression tag. Expression varies depending on the nature of the gene.

Components: The ORF clone is ion-exchange column purified and shipped in a 2D barcoded Matrix tube containing 10ug of transfection-ready, dried plasmid DNA (reconstitute with 100 ul of water).

Reconstitution Method:

1. Centrifuge at 5,000xg for 5min.
2. Carefully open the tube and add 100ul of sterile water to dissolve the DNA.
3. Close the tube and incubate for 10 minutes at room temperature.
4. Briefly vortex the tube and then do a quick spin (less than 5000xg) to concentrate the liquid at the bottom.
5. Store the suspended plasmid at -20°C. The DNA is stable for at least one year from date of shipping when stored at -20°C.

RefSeq: [NM_203454.3](#)

RefSeq Size: 2786 bp

RefSeq ORF: 1104 bp

Locus ID: 403314

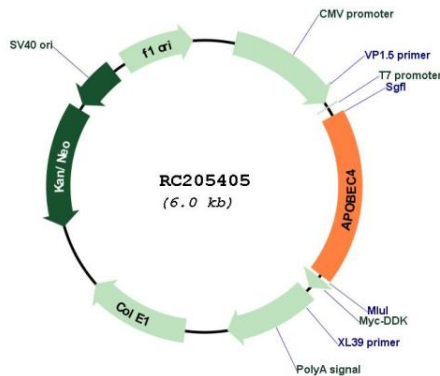
UniProt ID: [Q8WW27](#)

Cytogenetics: 1q25.3

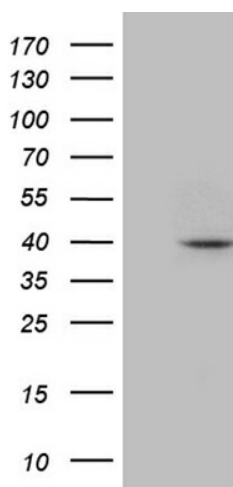
MW: 41.6 kDa

Gene Summary: This gene encodes a member of the AID/APOBEC family of polynucleotide (deoxy)cytidine deaminases, which convert cytidine to uridine. Other AID/APOBEC family members are involved in mRNA editing, somatic hypermutation and recombination of immunoglobulin genes, and innate immunity to retroviral infection. [provided by RefSeq, Jul 2008]

Product images:



Circular map for RC205405



HEK293T cells were transfected with the pCMV6-ENTRY control (Cat# [PS100001], Left lane) or pCMV6-ENTRY APOBEC4 (Cat# RC205405, Right lane) cDNA for 48 hrs and lysed. Equivalent amounts of cell lysates (5 ug per lane) were separated by SDS-PAGE and immunoblotted with anti-APOBEC4 (Cat# [TA810777])(1:2000).