

Product datasheet for RC205402

ACTRT1 (NM_138289) Human Tagged ORF Clone

Product data:

Product Type:	Expression Plasmids
Product Name:	ACTRT1 (NM_138289) Human Tagged ORF Clone
Tag:	Myc-DDK
Symbol:	ACTRT1
Synonyms:	AIP1; ARIP1; ARPT1; HSD27
Mammalian Cell Selection:	Neomycin
Vector:	pCMV6-Entry (PS100001)
E. coli Selection:	Kanamycin (25 ug/mL)
ORF Nucleotide Sequence:	>RC205402 ORF sequence Red=Cloning site Blue=ORF Green=Tags(s)

TTTTGTAATACGACTCACTATAGGGCGGCCGGAATTCGTCGACTGGATCCGGTACCGAGGAGATCTGCC
GCC**CGGATCGCC**

ATGTTTAAATCCACATGCATTAGATGTTCTGCTGTAATTTTTGACAATGGTTCAGGACTCTGCAAAGCAG
GCCTGTCTGGAGAGATTGGACCCGCCATGTCATCAGCTCCGTCTGGGACATTGTAATTCATGTGCC
TTTAGCAAGACTTAATCAGAAGTACTTCGTGGGCAAGAAGCCGTACAAGTATGAGGCCCTACATTTG
CACTACCCATTGAGCGTGGACTGGTAACAGGATGGGATGACATGGAGAACTCTGGAAACATCTCTTTG
AGCGGGAGCTTGGAGTAAACCCAGCCAACAGCCTGTACTTATGACCGAGCCCTTTGAATCCTAGGGA
AATTCGAGAAAAGCTAGCAGAAATGATGTTTGAGACCTTCAGTGTGCCTGGTTTCTACCTGTCTAATCAT
GCGGTGGCAGCGCTCTATGCCTCTGCCTGTGTCACAGGCCTGGTGGTGGACAGTGGAGATGGGGTCACTT
GCACTGTCCCCATCTTTGAGGGTACTCCCTGCCTCACGCAGTACCAAACTCTGTATGGCAGGGAGGGA
CATCACAGAGCACCTCACCCGGCTCCTCTTTGCTAGCGGGTTAACTTCCCTTGCATACTCAACAAGGCC
GTGGTAAATAACATCAAAGAGAAGTTGTGCTACATCGCCTTGGAGCCAGAGAAAGAGCTACGCAAGAGCC
GGGAGAGGTCTGGGAGCATACAGACTGCCAGATGGACATGTCATCCACTTTGGGGATGAGCTGTACCA
AGTGCCCGAGGTTCTTTTGCACCTGACCAGCTGGGCATCCACAGCCCAGGACTCTCAAAAATGGTCTCC
AGCAGCATCATGAAGTGTGACACTGACATCCAGAATAAACTTTATGCAGACATTGACTCTCCGGGGGCA
CCACTCTCCTCCCTGGGCTGGAGGAAAGGCTCATGAAGGAAGTGAACAGCTGGCTTCCAAGGTACTCC
CATCAAGATCACAGCTTCTCCTGATAGATGCTTCTCTGCATGGATTGGTGCATCCATCATGACCTTATG
AGCAGTTTCAAGCAGATGTGGTACCTCGGCAGACTTCAAGGATATGGGACATCTGTGGTTCAAAGAA
GGTGCTTT

ACGCGTACGCGGCCGCTCGAGCAGAAACTCATCTCAGAAGAGGATCTGGCAGCAAATGATATCCTGGATT
ACAAGGATGACGACGATAAGGTTTAA



[View online »](#)

Protein Sequence: >RC205402 protein sequence
Red=Cloning site Green=Tags(s)

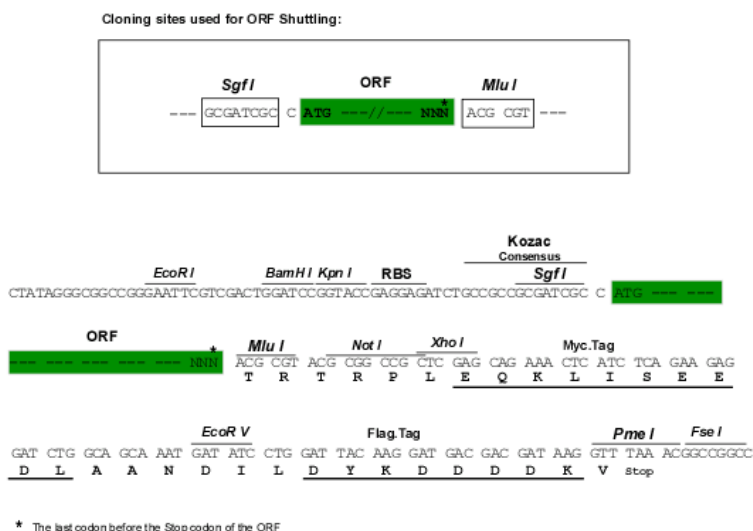
MFNPHALDVPVAVIFDNGSGLCKAGLSGEIGPRHVISSVLGHCKFNVPLARLNQKYFVGQEALYKYEALHL
 HYP IERGLVTGWDDMEKLWKHL FERELGVKPSQQPVLMTPEPSLNPREIREKLAEMMFETF SVPGFYL SNH
 AVAALYASACVTGLVVDSDGVTCTVPIFEGYSLPHAVTKLCMAGRDITEHL TRLLFASGFNFPCILNKA
 VVNNIKEKLCYIALEPEKELRKSARGEVLGAYRLPDGHVIHFGDELYQVPEVLFAPDQLGIHSPGLSKMVS
 SSIMKCDTDIQNKLYADIVLSGGTLLPGL EERLMKEVEQLASKGTPIKITASPDRCFSAWIGASIMTSM
 SSFKQMWVTSADFKKEYGTSVVQRRCF

TRTRPLEQKLISEEDLAANDILDYKDDDDKV

Chromatograms: https://cdn.origene.com/chromatograms/mk6196_b10.zip

Restriction Sites: SgfI-MluI

Cloning Scheme:



ACCN: NM_138289

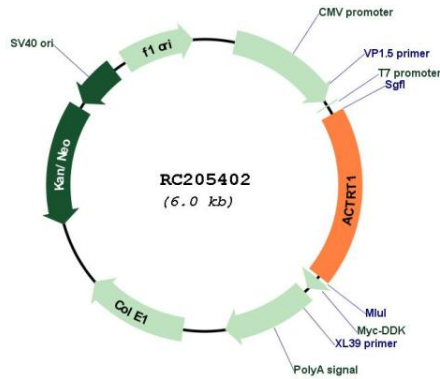
ORF Size: 1128 bp

OTI Disclaimer: Due to the inherent nature of this plasmid, standard methods to replicate additional amounts of DNA in E. coli are highly likely to result in mutations and/or rearrangements. Therefore, OriGene does not guarantee the capability to replicate this plasmid DNA. Additional amounts of DNA can be purchased from OriGene with batch-specific, full-sequence verification at a reduced cost. Please contact our customer care team at custsupport@origene.com or by calling 301.340.3188 option 3 for pricing and delivery.

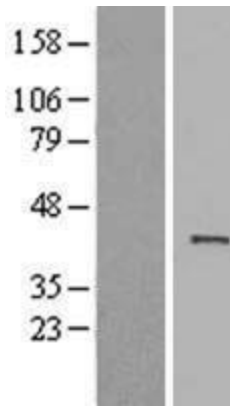
The molecular sequence of this clone aligns with the gene accession number as a point of reference only. However, individual transcript sequences of the same gene can differ through naturally occurring variations (e.g. polymorphisms), each with its own valid existence. This clone is substantially in agreement with the reference, but a complete review of all prevailing variants is recommended prior to use. [More info](#)

OTI Annotation:	This clone was engineered to express the complete ORF with an expression tag. Expression varies depending on the nature of the gene.
Components:	The ORF clone is ion-exchange column purified and shipped in a 2D barcoded Matrix tube containing 10ug of transfection-ready, dried plasmid DNA (reconstitute with 100 ul of water).
Reconstitution Method:	<ol style="list-style-type: none">1. Centrifuge at 5,000xg for 5min.2. Carefully open the tube and add 100ul of sterile water to dissolve the DNA.3. Close the tube and incubate for 10 minutes at room temperature.4. Briefly vortex the tube and then do a quick spin (less than 5000xg) to concentrate the liquid at the bottom.5. Store the suspended plasmid at -20°C. The DNA is stable for at least one year from date of shipping when stored at -20°C.
RefSeq:	NM_138289.4
RefSeq Size:	1452 bp
RefSeq ORF:	1131 bp
Locus ID:	139741
UniProt ID:	Q8TDG2
Cytogenetics:	Xq25
MW:	41.7 kDa
Gene Summary:	This gene encodes a protein related to the cytoskeletal protein beta-actin. This protein is a major component of the calyx in the perinuclear theca of mammalian sperm heads, and it therefore likely functions in spermatid formation. This gene is intronless and is similar to a related gene located on chromosome 1. A related pseudogene has also been identified approximately 75 kb downstream of this gene on chromosome X. [provided by RefSeq, May 2010]

Product images:



Circular map for RC205402



Western blot validation of overexpression lysate (Cat# [LY403347]) using anti-DDK antibody (Cat# [TA50011-100]). Left: Cell lysates from untransfected HEK293T cells; Right: Cell lysates from HEK293T cells transfected with RC205402 using transfection reagent MegaTran 2.0 (Cat# [TT210002]).