

Product datasheet for **RC205385**

Endothelin A Receptor (EDNRA) (NM_001957) Human Tagged ORF Clone

Product data:

Product Type:	Expression Plasmids
Product Name:	Endothelin A Receptor (EDNRA) (NM_001957) Human Tagged ORF Clone
Tag:	Myc-DDK
Symbol:	Endothelin A Receptor
Synonyms:	ET-A; ETA; ETA-R; ETAR; ETRA; hET-AR; MFDA
Mammalian Cell Selection:	Neomycin
Vector:	pCMV6-Entry (PS100001)
E. coli Selection:	Kanamycin (25 ug/mL)



[View online »](#)

ORF Nucleotide Sequence:

>RC205385 ORF sequence
 Red=Cloning site Blue=ORF Green=Tags(s)

TTTTGTAATACGACTCACTATAGGGCGGCCGGAATTCGTCGACTGGATCCGGTACCGAGGAGATCTGCC
 GCC**CGGATCGCC**

ATGGAAACCCTTTGCCTCAGGGCATCCTTTGGCTGGCACTGGTTGGATGTGTAATCAGTGATAATCCTG
 AGAGATACAGCACAAATCTAAGCAATCATGTGGATGATTTCACTACTTTTCGTGGCACAGAGCTCAGCTT
 CCTGGTTACCACTCATCAACCCACTAATTTGGTCTACCCAGCAATGGCTCAATGCACAATATTGCCCA
 CAGCAGACTAAAATTACTTCAGCTTTCAAATACATTAACACTGTGATATCTTGTACTATTTTCATCGTGG
 GAATGGTGGGGAATGCAACTCTGCTCAGGATCATTTACCAGAACAATGTATGAGGAATGGCCACAACGC
 GCTGATAGCCAGTCTTGGCCTTGGAGACCTTATCTATGTGGTCATTGATCTCCCTATCAATGTATTTAAG
 CTGCTGGCTGGGCGTGGCCTTTTGATCACAATGACTTTGGCGTATTTCTTTGCAAGCTGTTCCCTTTT
 TGCAGAAGTCTCGGTGGGATCACCGTCTCAACCTCTGCGCTCTTAGTGTGACAGGTACAGAGCAGT
 TGCTCTGGAGTCGTGTT**CGGGAATTGGGATTCCTTTGGTAACTGCCATTGAAATTGCTCCATCTGG**
 ATCCTGTGCTTTATCCTGGCCATTCCTGAAGCGATTGGCTTCGTCATGGTACCCTTTGAATATAGGGGTG
 AACAGCATAAAACCTGTATGCTCAATGCCACATCAAAATTCATGGAGTCTACCAAGATGTAAGGACTG
 GTGGCTCTTCGGTCTATTTCTGTATGCCCTTGGTGTGCACTGCGATCTTCTACACCCTCATGACTTGT
 GAGATGTTGAACAGAAGGAATGGCAGCTTGAGAATTGCCCTCAGTGAACATCTTAAGCAGCGTCGAGAAG
 TGGCAAAAACAGTTTTCTGCTTGGTTGTAATTTTGTCTTTGCTGGTCCCTGTTCAATTAAGCCGTAT
 ATTGAAGAAAACCTGTGTATAACGAGATGGACAAGAACCAGTGTGAATTACTTAGTTTCTTACTGCTCATG
 GATTACATCGGTATTAACCTGGCAACCATGAATTCATGTATAAACCCCATAGCTCTGATTTTGTGAGCA
 AGAAATTTAAAAATTGTTCCAGTCATGCCTCTGCTGCTGTTACCAGTCCAAAAGTCTGATGACCTC
 GGTCCCATGAACGGAACAAGCATCCAGTGAAGGACCAGCATCAAAACAACCACAACACAGACCCGGAGC
 AGCCATAAGGACAGCATGAAC

ACGCGTACGCGGCCGCTCGAGCAGAACTCATCTCAGAAGAGGATCTGGCAGCAAATGATATCCTGGATT
 ACAAGGATGACGACGATAAGGTTTAA

Protein Sequence:

>RC205385 protein sequence
 Red=Cloning site Green=Tags(s)

METLCLRASFWLALVGCVISDNPERYSTNLSNHVDDFTFRGTELSFLVTTHQPTNLVLPNSGSMHNYCP
 QQTKITSFAKYINTVISCTIFIVGMVGNATLLRIYQNKCMRNGHNALIASLALGDLIYVVIDLPINVK
 LLAGRWPFHDHDFGVFLCKLFPFLQKSSVGITVLNLCALSVDRYRAVASWSRVQIGIPLVTAIEIVSIW
 ILSFILAIPEAIGFVMVPFEYRGEQHKTCMLNATSKFMEFYQDVKDWLFGFYFCMPLVCTAIFYTLMT
 EMLNRRNGSLRIALSEHLKQRREVAKTVFCLVVFALCWFPVHLSRILKKTVYNEMDKNRCELLSFLLLM
 DYIGINLATMNSCINPIALYFVSKKFKNCFQSLCCCCYQSKSLMTSVPMMNGTSIQWKDHDQNNHNTDRS
 SHKDSMN

TRTRPLEQKLISEEDLAANDILDYKDDDDKV

Chromatograms:

https://cdn.origene.com/chromatograms/mk6138_e01.zip

Restriction Sites:

Sgfl-Mlul

Cloning Scheme:

Cloning sites used for ORF Shuttling:



* The last codon before the Stop codon of the ORF

ACCN: NM_001957

ORF Size: 1281 bp

OTI Disclaimer: The molecular sequence of this clone aligns with the gene accession number as a point of reference only. However, individual transcript sequences of the same gene can differ through naturally occurring variations (e.g. polymorphisms), each with its own valid existence. This clone is substantially in agreement with the reference, but a complete review of all prevailing variants is recommended prior to use. [More info](#)
OTI Annotation: This clone was engineered to express the complete ORF with an expression tag. Expression varies depending on the nature of the gene.

Components: The ORF clone is ion-exchange column purified and shipped in a 2D barcoded Matrix tube containing 10ug of transfection-ready, dried plasmid DNA (reconstitute with 100 ul of water).

Reconstitution Method:

1. Centrifuge at 5,000xg for 5min.
2. Carefully open the tube and add 100ul of sterile water to dissolve the DNA.
3. Close the tube and incubate for 10 minutes at room temperature.
4. Briefly vortex the tube and then do a quick spin (less than 5000xg) to concentrate the liquid at the bottom.
5. Store the suspended plasmid at -20°C. The DNA is stable for at least one year from date of shipping when stored at -20°C.

RefSeq: [NM_001957.4](#)
RefSeq Size: 4168 bp

RefSeq ORF: 1284 bp

Locus ID: 1909

UniProt ID: [P25101](#)
Cytogenetics: 4q31.22-q31.23

Domains: 7tm_1

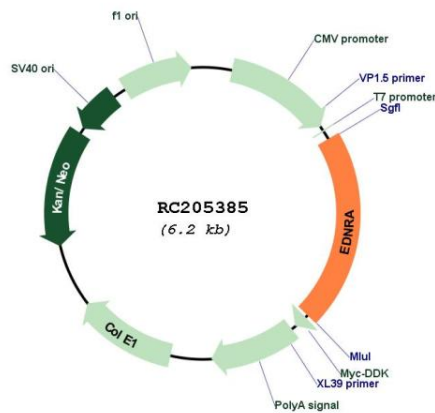
Protein Families: Druggable Genome, GPCR, Transmembrane

Protein Pathways: Calcium signaling pathway, Neuroactive ligand-receptor interaction, Vascular smooth muscle contraction

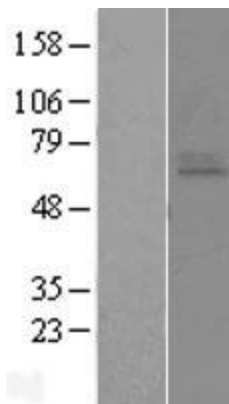
MW: 48.7 kDa

Gene Summary: This gene encodes the receptor for endothelin-1, a peptide that plays a role in potent and long-lasting vasoconstriction. This receptor associates with guanine-nucleotide-binding (G) proteins, and this coupling activates a phosphatidylinositol-calcium second messenger system. Polymorphisms in this gene have been linked to migraine headache resistance. Alternative splicing results in multiple transcript variants. [provided by RefSeq, Oct 2009]

Product images:



Circular map for RC205385



Western blot validation of overexpression lysate (Cat# [LY400727]) using anti-DDK antibody (Cat# [TA50011-100]). Left: Cell lysates from untransfected HEK293T cells; Right: Cell lysates from HEK293T cells transfected with RC205385 using transfection reagent MegaTran 2.0 (Cat# [TT210002]).