

Product datasheet for **RC205381**

Adenosine A1 Receptor (ADORA1) (NM_001048230) Human Tagged ORF Clone

Product data:

| | |
|---------------------------|----------------------------------------------------------------------|
| Product Type: | Expression Plasmids |
| Product Name: | Adenosine A1 Receptor (ADORA1) (NM_001048230) Human Tagged ORF Clone |
| Tag: | Myc-DDK |
| Symbol: | Adenosine A1 Receptor |
| Synonyms: | RDC7 |
| Mammalian Cell Selection: | Neomycin |
| Vector: | pCMV6-Entry (PS100001) |
| E. coli Selection: | Kanamycin (25 ug/mL) |
| ORF Nucleotide Sequence: | >RC205381 ORF sequence Red=Cloning site Blue=ORF Green=Tags(s) |

TTTTGTAATACGACTCACTATAGGGCGGCCGGAATTCGTCGACTGGATCCGGTACCGAGGAGATCTGCC
GCC**CGATCGCC**

ATGCCGCCCTCCATCTCAGCTTTCCAGGCCGCCTACATCGGCATCGAGGTGCTCATCGCCCTGGTCTCTG
TGCCCGGAACGTGCTGGTGATCTGGGCGGTGAAGGTGAACCAGGCGCTGCGGGATTCCACCTTCTGCTT
CATCGTGCCGCTGGCGGTGGCTGATGTGGCCGTGGGTGCCCTGGTCATCCCCCTCGCCATCCTCATCAAC
ATTGGGCCACAGACCTACTTCCACACCTGCCTCATGGTTGCCTGTCCGGTCCCTCATCCTCACCCAGAGCT
CCATCCTGGCCCTGCTGGCAATTGCTGTGGACCACTACCTCCGGTCAAGATCCCTCTCCGGTACAAGAT
GGTGGTGACCCCGGAGGGCGGCGGTGGCCATAGCCGGCTGCTGGATCCTCTCCTTCGTGGTGGGACTG
ACCCCTATGTTTGGCTGGAACAATCTGAGTGCGGTGGAGCGGGCCTGGGAGCCAACGGCAGCATGGGGG
AGCCCGTGATCAAGTGCAGTTCGAGAAGGTATCAGCATGGAGTACATGGTCTACTTCAACTTCTTTGT
GTGGGTGCTGCCCGCTTCTCCTCATGGTCTCATCTACCTGGAGGTCTTCTACCTAATCCGCAAGCAG
CTCAACAAGAAGGTGTCGGCCTCCTCCGGCAGCCGCAAGAAGTACTATGGGAAGGAGCTGAAGATCGCCA
AGTCGCTGGCCCTCATCCTTCTCCTTTGCCCTCAGCTGGTGCCTTTGCACATCCTCAACTGCATCAC
CCTTTCTGCCAGTCTGCCACAAGCCAGCATCCTTACCTACATTGCCATCTTCTCAGCAGGGCAAC
TCGGCCATGAACCCATTGTCTATGCCTTCCGCATCCAGAAGTCCGCGTCACCTTCTTAAGATTTGGA
ATGACCATTTCCGCTGCCAGCCTGCACCTCCATTGACGAGGATCTCCAGAAGAGAGGCCTGATGAC

ACGCGTACGCGGCCGCTCGAGCAGAAACTCATCTCAGAAGAGGATCTGGCAGCAAATGATATCCTGGATT
ACAAGGATGACGACGATAAGGTTTAA



[View online »](#)

Protein Sequence: >RC205381 protein sequence
Red=Cloning site Green=Tags(s)

MPPSISAFQAAYIGIEVLIALVSVPGNVLVIWAVKVNQALRDSTFCFIVPLAVADVAVGALVIPLAILIN
 IGPQTYFHTCLMVACPVLILTQSSILALLAIADVHYLRVKIPLRYKMVTPRRAAVAIAGCWILSFVVGL
 TPMFGWNNLSAVERAWAANGSMGEPVIKCEFEKVISMEYMYVFNFFVWVLPPLLLMLVLIYLEVFYLIRKQ
 LNKKVSASSGDPQKYYGKELKIAKSLALILFLFALSWLPLHILNCITLFCQSCHKPSILTYIAIFLTHGN
 SAMNPIVYAFRIQKFRVTLKIWNDFRCQPAPPIDEDLPEERPDD

TRTRPLEQKLISEEDLAANDILDYKDDDDKV

Chromatograms: https://cdn.origene.com/chromatograms/mk6312_e06.zip

Restriction Sites: SgfI-MluI

Cloning Scheme:



ACCN: NM_001048230

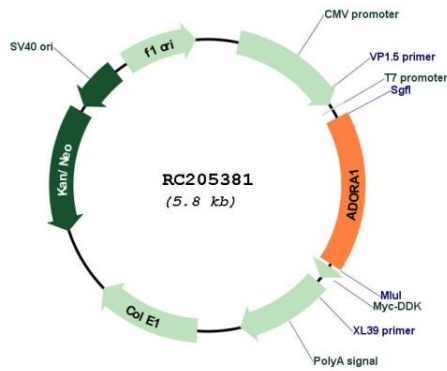
ORF Size: 978 bp

OTI Disclaimer: Due to the inherent nature of this plasmid, standard methods to replicate additional amounts of DNA in E. coli are highly likely to result in mutations and/or rearrangements. Therefore, OriGene does not guarantee the capability to replicate this plasmid DNA. Additional amounts of DNA can be purchased from OriGene with batch-specific, full-sequence verification at a reduced cost. Please contact our customer care team at custsupport@origene.com or by calling 301.340.3188 option 3 for pricing and delivery.

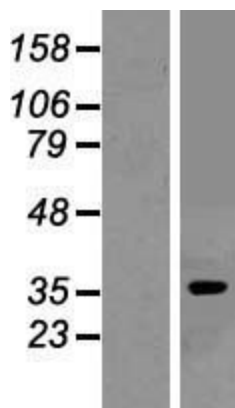
The molecular sequence of this clone aligns with the gene accession number as a point of reference only. However, individual transcript sequences of the same gene can differ through naturally occurring variations (e.g. polymorphisms), each with its own valid existence. This clone is substantially in agreement with the reference, but a complete review of all prevailing variants is recommended prior to use. [More info](#)

| | |
|-------------------------------|----------------------------------------------------------------------------------------------------------------------------------------------------------------------------------------------------------------------------------------------------------------------------------------------------------------------------------------------------------------------------------------------------------------------------------------------------------------------------------------------------------------------------------------------------------------------------------------------------------------------------------|
| OTI Annotation: | This clone was engineered to express the complete ORF with an expression tag. Expression varies depending on the nature of the gene. |
| Components: | The ORF clone is ion-exchange column purified and shipped in a 2D barcoded Matrix tube containing 10ug of transfection-ready, dried plasmid DNA (reconstitute with 100 ul of water). |
| Reconstitution Method: | <ol style="list-style-type: none">1. Centrifuge at 5,000xg for 5min.2. Carefully open the tube and add 100ul of sterile water to dissolve the DNA.3. Close the tube and incubate for 10 minutes at room temperature.4. Briefly vortex the tube and then do a quick spin (less than 5000xg) to concentrate the liquid at the bottom.5. Store the suspended plasmid at -20°C. The DNA is stable for at least one year from date of shipping when stored at -20°C. |
| RefSeq: | NM_001048230.1 , NP_001041695.1 |
| RefSeq Size: | 2782 bp |
| RefSeq ORF: | 981 bp |
| Locus ID: | 134 |
| UniProt ID: | P30542 |
| Cytogenetics: | 1q32.1 |
| Protein Families: | Druggable Genome, GPCR, Transmembrane |
| Protein Pathways: | Neuroactive ligand-receptor interaction |
| MW: | 36.5 kDa |
| Gene Summary: | The protein encoded by this gene is an adenosine receptor that belongs to the G-protein coupled receptor 1 family. There are 3 types of adenosine receptors, each with a specific pattern of ligand binding and tissue distribution, and together they regulate a diverse set of physiologic functions. The type A1 receptors inhibit adenylyl cyclase, and play a role in the fertilization process. Animal studies also suggest a role for A1 receptors in kidney function and ethanol intoxication. Transcript variants with alternative splicing in the 5' UTR have been found for this gene. [provided by RefSeq, Jul 2008] |

Product images:



Circular map for RC205381



Western blot validation of overexpression lysate (Cat# [LY420792]) using anti-DDK antibody (Cat# [TA50011-100]). Left: Cell lysates from untransfected HEK293T cells; Right: Cell lysates from HEK293T cells transfected with RC205381 using transfection reagent MegaTran 2.0 (Cat# [TT210002]).