

Product datasheet for RC205380

Rb2 p130 (RBL2) (NM_005611) Human Tagged ORF Clone

Product data:

Product Type:	Expression Plasmids
Product Name:	Rb2 p130 (RBL2) (NM_005611) Human Tagged ORF Clone
Tag:	Myc-DDK
Symbol:	Rb2 p130
Synonyms:	P130; Rb2
Mammalian Cell Selection:	Neomycin
Vector:	pCMV6-Entry (PS100001)
E. coli Selection:	Kanamycin (25 ug/mL)
ORF Nucleotide Sequence:	>RC205380 ORF sequence Red=Cloning site Blue=ORF Green=Tags(s)

TTTTGTAATACGACTCACTATAGGGCGGCCGGAATTCGTCGACTGGATCCGGTACCGAGGAGATCTGCC
GCC**CGATCGCC**

ATGCCGTCGGGAGGTGACCAGTCGCCACC GCCCCCCGCCTCCCCCTCCGGCGGGCGGCAGCCTCGGATGAGG
AGGAGGAGGACGACGGCGAGGCGGAAGACGCCGCCGCCTGCCGAGTCGCCACCCCTCAGATCCAGCA
GCGGTTTCGACGAGCTGTGCAGCCGCTCAACATGGACGAGGCGGGCGGGCCGAGCCTGGGACAGCTAC
CGCAGCATGAGCGAAAGCTACACGCTGGAGGAAATGATCTTCATTGGTTAGCATGTGCCTATATGTGG
CTTGACAGAAAATCTGTTCCAAGTGAAGCAAAGGACAGTGAAGGAAACTATGTATCTTTAACTAGAAT
CCTGAAATGTTTCAGAGCAGAGCTTAATCGAATTTTTTAATAAGATGAAGAAGTGGGAAGACATGGCAAA
CTACCCCCACATTTTCAGAGAACGTAAGGAGATTAGAAAAGAACTTCACTGTTTCTGCTGTAATTTTTA
AGAAATATGAACCCATTTTTTCAGGACATCTTTAAATACCCCTCAAGAGGAGCAACCTCGTCAGCAGCGAGG
AAGGAAACAGCGGCGACAGCCCTGTACTGTGTCTGAAATTTTCCATTTTTGTTGGGTGCTTTTTATATAT
GCAAAAAGGTAATTTCCCATGATTAGTGATGATTTGGTCAATCTTATCACCTGCTGTGTGTGCTTTGG
ACTTAGTTTATGGAAATGCATTCAGTGTCTAATCGTAAAGAACTTGTGAACCCATTTTTAAAGGCTT
ATCTGAAGATTTTCATGCTAAAGATTCTAAACCTTCTCTGACCCCTTGTATCATTGAGAACTGTGT
TCCTTACATGATGGCCTAGTTTTGGAAGCAAAGGGGATAAAGGAACATTTCTGGAACCCATATATTAGGA
AACTTTATGAAAAAAGCTCCTTAAGGGAAAAGAAGAAAATCTCACTGGGTTTCTAGAACCTGGGAACCT
TGGAGAGAGTTTTAAAGCCATCAATAAGGCCTATGAGGAGTATGTTTTATCTGTTGGGAATTTAGATGAG
CGGATATTTCTGGAGAGGATGCTGAGGAGGAAATGGGACTCTCTCAAGGTGTCTGAACGCTGGTTCAG
GAACAGAGACTGCTGAAAGGTCAGATGAAAAACATCTTACAGCAGCATTTTGACAAGTCCAAAGCACT
TAGAATCTCCACACCACTAACTGGTGTAGGTACATTAAGGAGAATAGCCCTTGTGTGACTCCAGTTTCT
ACAGCTACGCATAGCTTGAGTCGCTTTCACACCATGCTGACAGGCCTCAGGAATGCACCAAGTGAGAAAC
TGGAAACAGATTCTCAGGACATGTTCCAGAGATCCAACCCAGGCTATTGCTAACAGACTGAAAGAAATGTT
TGAATATATTCTCAGCATTTCCAGCCAGACGAGGATTTAGTAATTGTGCTAAAGAAATTTGCCAGCAA



CATTTTCGTTTTGCGGAGATGCTTACTATAAAGTATTAGAATCTGTTATTGAGCAGGAACAAAAAGAC
TAGGAGACATGGATTTATCTGGTATTCTGGAACAAGATGCGTTCCACAGATCTCTTTGGCCTGCTGCCT
TGAGGTCGTCACCTTTTTCTTATAAGCCTCCTGGGAATTTCCATTTACTGAAATATTTGATGTGCCT
CTTTATCATTTTTATAAGGTGATAGAAGTATTCATTAGAGCAGAAGATGGCCTTTGTAGAGAGGTGGTAA
AACACCTTAATCAGATTGAAGAACAGATCTTAGATCATTGGCATGGAACCAGAGTCTCCACTCTGGGA
AAAAATTAGAGACAATGAAAACAGAGTTCCTACATGTGAAGAGGTGATGCCACCTCAGAACCTGGAAGG
GCAGATGAAATTTGCATTGCTGGCTCCCCTTTGACTCCCAGAAGGGTGACTGAAGTTCGTGCTGACTG
GAGGACTTGGAAGGAGCATAACATCTCCAACCACATTATACGATAGGTACAGCTCCCACCAGCCAGCAC
TACCAGAAGGCGCTATTTGTTGAGAATGATAGCCCTCTGATGGAGGGACGCTGGGCGCATGCCCCCA
CAGCCCTAGTCAATGCTGTCCCTGTGCAGAATGTATCTGGGAGACTGTTTCTGTACACCAGTTCCTG
GACAGACTTTGGTCACCATGGCAACCGCCACTGTCACAGCCAACAATGGGCAAACGGTAACCATTCTGT
GCAAGGTATTGCCAATGAAAATGGAGGGATAACATTCTCCCTGTCCAAGTCAATGTTGGGGGCGAGGCA
CAAGCTGTGACAGGCTCCATCCAGCCCTCAGTGTCTAGGCCCTGGCTGGAAGTCTGAGCTCTCAACAGG
TGACAGGAACAACCTTTGCAAGTCCCTGGTCAAGTGGCCATTCAACAGATTTCCCAGGTGGCCAACAGCA
GAAGCAAGGCCAGTCTGTAACCAGCAGTAGTAATAGACCAGGAAGACCAGCTCTTTATCGCTTTCTTT
AGAAAGGTATACCATTTAGCAGCTGTCCGCTTCGGGATCTCTGTGCCAAACTAGATATTTAGATGAAT
TGAGGAAAAAATCTGGACCTGCTTTGAATTCTCCATAATTCAGTGTCTGAACTTATGATGGACAGACA
TCTGGACCAGTTATTAATGTGTGCCATTATGTGATGGCAAAGGTACAAAAAGAAGATAAGTCTTCCAG
AACATTATGCGTTGTTATAGGACTCAGCCGAGGCCCGGAGCCAGGTGTATAGAAGTGTGTTGATAAAAAG
GAAAAAGAAAAAGAAGAAATCTGGCAGCAGTGATAGCAGAAGCCATCAGAATCTCCAACAGAATAAA
CAAAGATAGAACCAGTAGAGACTCCAGTCCAGTTATGAGGTCAAGCAGCACCTTGCCAGTTCACAGCCC
AGCAGTGCTCCTCCACACCTACTCGCCTCACAGGTGCCAACAGTGACATGGAAGAAGAGGAGAGGGGAG
ACCTCATTGAGTCTACAACAACATCTACATCAAACAGATTAAGACATTTGCCATGAAGTACTCACAGGC
AAATATGGATGCTCCTCCACTCTCTCCCTATCCATTTGTAAAGAACAGGCTCCCCTCGCCGAATACAGTTG
TCTCAAAATCATCTGTCTACATTTCCCCACATAAAAAATGAAACAATGCTTTCTCCTCGAGAAAAGATTT
TCTATTACTTCAGCAACAGTCTTCAAAGAGACTGAGAGAAATTAATAGTATGATACACACAGGAGAAAC
TCCTACTAAAAAGAGAGGAATTTTGGAAAGTGAAGTGAATCACCTGCAAAAAGAAATTTGCCAGAA
AATCATTCTGCCTTATTACGCCGTCTCCAAGATGTAGCTAATGACCGTGGTTCCAC

ACGCGTACGCGGCCGCTCGAGCAGAACTCATCTCAGAAGAGGATCTGGCAGCAATGATATCTGGATT
ACAAGGATGACGACGATAAGGTTTAA

Protein Sequence: >RC205380 protein sequence
 Red=Cloning site Green=Tags(s)

```

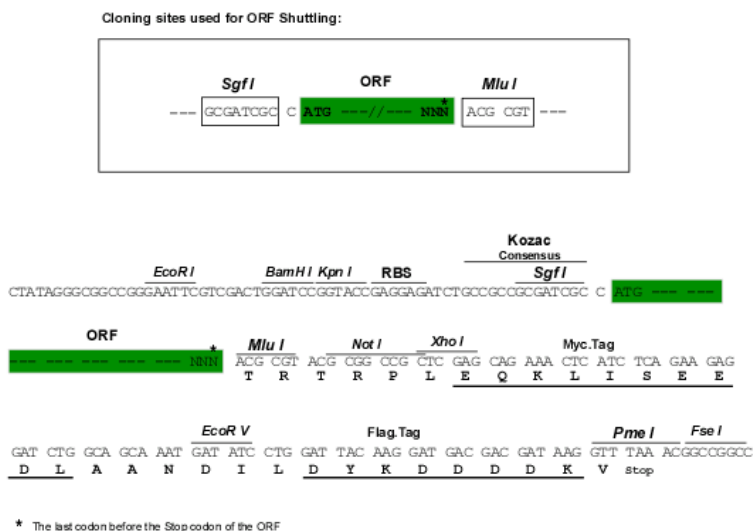
MPSGGDQSPPPPPPPAAAAASDEEEEDDGEAEDAAPPAESPTPQIQRFDELCSRLNMDEAARAEAWDSY
RSMSESYTLEGNDLHWLACALYVACRKSVPVSKGTVEGNYVSLTRILKCSEQLIEFFNKMKKWEDMAN
LPPHFRRTERLERNFTVSAVIFKKEYEPIFQDIFKYPQEEQPRQQRGRKQRRQPCVSEIFHFCWVLFYI
AKGNFPMISDDL VNSYHLLL CALDLVYGNALQCSNRKELVNPNFKGLSEDFHAKDSKPSSDPPCIEKLC
SLHDGLVLEAKGIKEHFWKPYIRKLYEKKLLKGKEENLTGFLEPNGFGESFKAINKAYEYVLSVGNLDE
RIFLGEDAEIEIGTL SRCLNAGSGTETAERVQMKNILQQHFDKSKALRISTPLTGVRYIKENSPCVTPVS
TATHSLRSLHTMLTGLRNAPSEKLEQILRTRCSRPTQAIANRLKEMFEIYSQHFQPEDDFSNCAKEIASK
HFRFAEMLYYKLVESVIEQEQKRLGMDL SGILEQDAFHRSLLACCLEVVTF SYKPPGNFPFITEIFDVP
LYHFYKVIIEVFI RAEDGLCREVVKHLNQIEEQILDHLAWKPESPLWEKIRDNENRVPTCEEVMPQNLER
ADEICIASPLTPRRVTEVRADTGGGRSITSP TLYDRYSSPASTTRRRRLFVENDSPSDGGTPGRMPP
QPLVNAVVPQVNSGETVSVTPVPGQTLVTMATATVTANNGQTVTIPVQGIANENGGITFFPVQVNVGGQA
QAVTGSIQPLSAQALAGSLSSQQTGTTLQVPGQVAIQQISPGGQQKQKQSVTSSSNRPRKTSSLSLFF
RKVYHLAAVRLRDLCAKLDI SDEL RKKIWTCFEF SIIQCPELMMDRHLDQLLMCAIYVMKAVTKEDKSFQ
NIMRCYRTQPQARSQVYRSVL IKGKRKRNRSGSSDRSHQNSPTELNKDRTSRDSSPVMRSSTLPVPQP
SSAPPTPTRLTGANS DMEEEEERGLIQFYNNIYIKQIKTFAMKYSQANMDAPPLSPYFVRTGSPRRIQL
SQNHVYI SPHKNETMLSPREKIFYYFSNSPSKRLREINSMIHTGETPTKKRGILLEDGSESPAKRICPE
NHSALLRRLQDVANDRGSH
  
```

TRTRPLEQKLISEEDLAANDILDYKDDDDKV

Chromatograms: https://cdn.origene.com/chromatograms/mk6261_g11.zip

Restriction Sites: SgfI-MluI

Cloning Scheme:

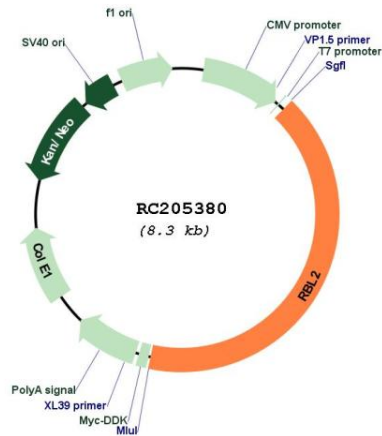


ACCN: NM_005611

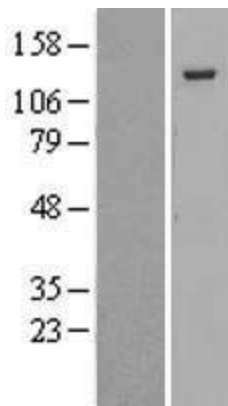
ORF Size: 3417 bp

OTI Disclaimer:	The molecular sequence of this clone aligns with the gene accession number as a point of reference only. However, individual transcript sequences of the same gene can differ through naturally occurring variations (e.g. polymorphisms), each with its own valid existence. This clone is substantially in agreement with the reference, but a complete review of all prevailing variants is recommended prior to use. More info
OTI Annotation:	This clone was engineered to express the complete ORF with an expression tag. Expression varies depending on the nature of the gene.
Components:	The ORF clone is ion-exchange column purified and shipped in a 2D barcoded Matrix tube containing 10ug of transfection-ready, dried plasmid DNA (reconstitute with 100 ul of water).
Reconstitution Method:	<ol style="list-style-type: none">1. Centrifuge at 5,000xg for 5min.2. Carefully open the tube and add 100ul of sterile water to dissolve the DNA.3. Close the tube and incubate for 10 minutes at room temperature.4. Briefly vortex the tube and then do a quick spin (less than 5000xg) to concentrate the liquid at the bottom.5. Store the suspended plasmid at -20°C. The DNA is stable for at least one year from date of shipping when stored at -20°C.
Note:	Plasmids are not sterile. For experiments where strict sterility is required, filtration with 0.22um filter is required.
RefSeq:	NM_005611.4
RefSeq Size:	4903 bp
RefSeq ORF:	3420 bp
Locus ID:	5934
UniProt ID:	Q08999
Cytogenetics:	16q12.2
Domains:	RB_B, RB_A, CYCLIN
Protein Families:	Druggable Genome, Transcription Factors
Protein Pathways:	Cell cycle, TGF-beta signaling pathway
MW:	128.3 kDa
Gene Summary:	Key regulator of entry into cell division. Directly involved in heterochromatin formation by maintaining overall chromatin structure and, in particular, that of constitutive heterochromatin by stabilizing histone methylation. Recruits and targets histone methyltransferases KMT5B and KMT5C, leading to epigenetic transcriptional repression. Controls histone H4 'Lys-20' trimethylation. Probably acts as a transcription repressor by recruiting chromatin-modifying enzymes to promoters. Potent inhibitor of E2F-mediated trans-activation, associates preferentially with E2F5. Binds to cyclins A and E. Binds to and may be involved in the transforming capacity of the adenovirus E1A protein. May act as a tumor suppressor.[UniProtKB/Swiss-Prot Function]

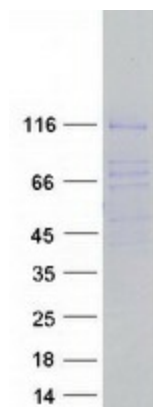
Product images:



Circular map for RC205380



Western blot validation of overexpression lysate (Cat# [LY417191]) using anti-DDK antibody (Cat# [TA50011-100]). Left: Cell lysates from untransfected HEK293T cells; Right: Cell lysates from HEK293T cells transfected with RC205380 using transfection reagent MegaTran 2.0 (Cat# [TT210002]).



Coomassie blue staining of purified RBL2 protein (Cat# [TP305380]). The protein was produced from HEK293T cells transfected with RBL2 cDNA clone (Cat# RC205380) using MegaTran 2.0 (Cat# [TT210002]).