

Product datasheet for **RC205377**

ENPP2 (NM_001040092) Human Tagged ORF Clone

Product data:

Product Type:	Expression Plasmids
Product Name:	ENPP2 (NM_001040092) Human Tagged ORF Clone
Tag:	Myc-DDK
Symbol:	ENPP2
Synonyms:	ATX; ATX-X; AUTOTAXIN; LysoPLD; NPP2; PD-IALPHA; PDNP2
Mammalian Cell Selection:	Neomycin
Vector:	pCMV6-Entry (PS100001)
E. coli Selection:	Kanamycin (25 ug/mL)



[View online »](#)

**ORF Nucleotide
Sequence:**

>RC205377 representing NM_001040092
 Red=Cloning site Blue=ORF Green=Tags(s)

TTTTGTAATACGACTCACTATAGGGCGGCCGGAATTCGTCGACTGGATCCGGTACCGAGGAGATCTGCC
 GCC**CGCATCGCC**

ATGGCAAGGAGGAGCTCGTTCCAGTCGTGTGACATAATATCCCTGTTCACTTTTGCCGTTGGAGTCAATA
 TCTGCTTAGGATTCAGTGCACATCGAATTAAGAGAGCAGAAGGATGGGAGGAAGGTCCTCCTACAGTGCT
 ATCAGACTCCCCCTGGACCAACATCTCCGGATCTTGCAAGGGCAGGTGCTTTGAACCTCAAGAGGCTGGA
 CCTCCTGATTGTCGCTGTGACAACCTGTGTAAGAGCTATACCAGTTGCTGCCATGACTTTGATGAGCTGT
 GTTTGAAGACAGCCCGTGGCTGGGAGTGTACTAAGGACAGATGTGGAGAAGTCAGAAATGAAGAAAATGC
 CTGTCACTGCTCAGAGGACTGCTTGCCAGGGGAGACTGCTGTACCAATTACCAAGTGGTTTGCAAAGGA
 GAGTCGCATTGGTTGATGATGACTGTGAGGAAATAAAGGCCGAGAATGCCCTGCAGGGTTTGTTCGCC
 CTCATTAAATCATCTTCCGTGGATGGCTTCCGTGCATACATGAAGAAAGGCAGCAAAGTCATGCC
 TAATATTGAAAACTAAGGTCTTGTGGCACACACTCTCCCTACATGAGGCCGGTGTACCCAATAAAACC
 TTTCTAACTTATACACTTTGGCCACTGGGCTATATCCAGAATACATGGAATTGTTGGCAATTCATGT
 ATGATCCTGTATTTGATGCCACTTTTCATCTGCGAGGGCGAGAGAAATTAATCATAGATGGTGGGGAGG
 TCAACCGCTATGGATTACAGCCACCAAGCAAGGGGTGAAAGCTGGAACATTCTTTTGGTCTGTTGTCATC
 CCTCAGAGCGGAGAATTAACCATATTGAGTGGCTCACCCCTGCCAGATCATGAGAGGCCCTTCGGTCT
 ATGCCCTTCTATTCTGAGCAACCTGATTTCTCTGGACACAAATATGGCCCTTTTCGGCCCTGAGATGACAAA
 TCCTCTGAGGGAAATCGACAAAATTGTGGGGCAATTAATGGATGGACTGAAACAATAAACTGCATCGG
 GTGTCAACGTCATCTTGTGCGGAGACCATGGAATGGAAGATGTCACATGTGATAGAAGTTCGATTTTGA
 GTAATTACCTAATAATGTGGATGATATTACTTTAGTGCCTGGAACCTAGGAAGAATTCGATCCAAAT
 TAGCAACAATGCTAAATATGACCCCAAAGCCATTATTGCCAATCTCACGTGTAATAAAACAGATCAGCAC
 TTTAAGCCTTACTTGAACAGCACCTTCCCAAACGTTTGCATATGCCAACAACAGAAGAATTGAGGATA
 TCCATTTATTGGTGAACGCAGATGGCATGTTGCAAGGAAACCTTTGGATGTTTATAAGAAACCATCAGG
 AAAATGCTTTTCCAGGGAGACCACGGATTTGATAACAAGGTCAACAGCATGCAGACTGTTTTTGTAGGT
 TATGGCCCAACATTTAAGTACAAGACTAAAGTGCCTCCATTTGAAAACATTGAACTTTACAATGTTATGT
 GTGATCTCCTGGGATTGAAGCCAGCTCCTAATAATGGGACCCATGGAAGTTTGAATCATCTCCTGCGCAC
 TAATACCTTCAGGCCAACATGCCAGAGGAAGTTACCAGACCAATTATCCAGGGATTATGTACCTTCAG
 TCTGATTTTACCTGGGCTGCATTTGTGATGATAAGGTAGAGCCAAAGAACAAGTTGGATGAACTCAACA
 AACGGCTTCATACAAAAGGGTCTACAGAAGAGAGACACCTCCTCTATGGGCGACCTGCAGTGCTTTATCG
 GACTAGATATGATATCTTATATCACACTGACTTTGAAAGTGGTTATAGTAAAATATTCCTAATGCCACTC
 TGGACATCATATACTGTTTCCAACAGGCTGAGGTTTCCAGCGTTCCTGACCATCTGACCAGTTGCGTCC
 GGCTGATGTCGGTGTCTCCGAGTTTCAGTCAGAAGTGTGGCTACAAAAATGATAAGCAGATGTC
 CTACGGATTCCTTTCTCCTTATCTGAGCTCTTACCAGAGGCTAAATATGATGCATTCCTTGTAAACC
 AATATGGTTCCAATGTATCCTGCTTTCAAACGGGTCTGGAATATTTCCAAGGGTATTGGTGAAGAAAT
 ATGCTTCGAAAGAAAATGGAGTTAACGTGATAAGTGGACCAATCTCGACTATGACTATGATGGCTTACA
 TGACACAGAAGACAAAATAAAACAGTACGTGGAAGGCAGTTCATTCTGTTCCAACCTCACTACTACAGC
 ATCATACCAGCTGTCTGGATTTCACTCAGCCTGCCGACAAGTGTGACGGCCCTCTCTGTGTCCTCCT
 TCATCCTGCCTCACCGGCTGACAAAGGAGAGCTGCAATAGCTCAGAGGACGAATCAAATGGGTAGA
 AGAACTCATGAAGATGCACACAGCTAGGGTGCCTGACATTGAACATCTACCAGCCTGGACTTCTCCGA
 AAGACCAGCCGACGTACCCAGAATCCTGACACTCAAGACATACCTGCATACATATGAGAGCGAGATT

ACGCGTACGCGGCCGCTCGAGCAGAAACTCATCTCAGAAGAGGATCTGGCAGCAATGATATCCTGGATT
 ACAAGGATGACGACGATAAGGTTTAA

Protein Sequence: >RC205377 representing NM_001040092
 Red=Cloning site Green=Tags(s)

MARRSSFQSCQIISLFTFAVGVNICLGFTAHRKRAEGWEEGPPTVLSDSPWTNISGSCKGRFELQEAG
 PPDCRCNDLCKSYTSCCHDFDELCLKTARGWECTKDRCGEVRNEENACHCEDCLARGDCCTNYQVVKCG
 ESHWVDDDCCEEIKAAECPAGFVRPPLIIFSVDFRASVMKKGSKVMPNIEKLRSCGTHSPYMRPVYPTKT
 FPNLYTLATGLYPESHGIVGNSMYDPVFDATFHLLRGREKFNHRWWGGQPLWITATKQGVKAGTFFWSVVI
 PHERRILTILQWLTLPDHERPSVYAFYSEQPDFSGHKYGPFGPEMTNPLREIDKIVGQLMDGLKQLKLR
 CVNVIFVGDHGMEDVTCRTEFLSNYL TNVDDITLVPGLGRIRSKFSNNAKYDPKAIIANLTCCKPDQH
 FKPYLKQHLPKRLHYANNRIEDIHLLVERRWHVARKPLDVYKPKSGKCFQGDHGF DNKVNMQTVFVG
 YGPTFKYKTKVPPFENIELYNVMCDLLGLKPANNGTHGSLNHLRLTNTFRPTMPEEVTRPNYPGIMYLQ
 SDFDLGCTCDDKVEPKNLDELNKR LHTKGSTEERHLLYGRPAVLYRTRYDILYHTDFESGYSEIFLMPL
 WTSYTVSKQAEVSSVPDHLTSCVRPDVRSVPSF SQNCLAYKNDKQMSYGFLFPYLSSSPEAKYDAFLVT
 NMVPMYPAFKRVWNYFQRVLVKKYASERNGVNVI SGPIFDYDYDGLHDTEDKIKQYVEGSSIPVPTHYYS
 IITSCLDFTQPADKCDGPLSVSSFILPHRPDNEESCNSSEDESKWVEELMKMHTARVRDIEHLTSLDFFR
 KTSRSYPEILTLKTYLHTYESEI

TRTRPLEQKLISEEDLAANDILDYKDDDDKV

Chromatograms: https://cdn.origene.com/chromatograms/mg2890_b05.zip

Restriction Sites: SgfI-MluI

Cloning Scheme:

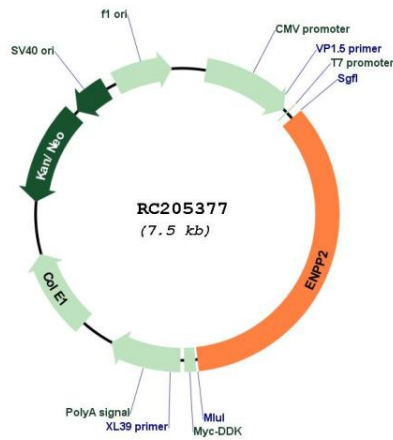
Cloning sites used for ORF Shuttling:



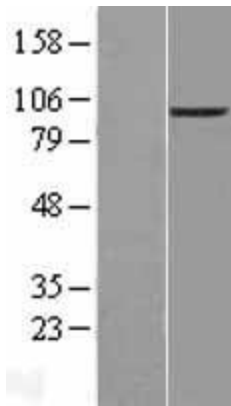
* The last codon before the Stop codon of the ORF

ACCN:	NM_001040092
ORF Size:	2589 bp
OTI Disclaimer:	The molecular sequence of this clone aligns with the gene accession number as a point of reference only. However, individual transcript sequences of the same gene can differ through naturally occurring variations (e.g. polymorphisms), each with its own valid existence. This clone is substantially in agreement with the reference, but a complete review of all prevailing variants is recommended prior to use. More info
OTI Annotation:	This clone was engineered to express the complete ORF with an expression tag. Expression varies depending on the nature of the gene.
Components:	The ORF clone is ion-exchange column purified and shipped in a 2D barcoded Matrix tube containing 10ug of transfection-ready, dried plasmid DNA (reconstitute with 100 ul of water).
Reconstitution Method:	<ol style="list-style-type: none">1. Centrifuge at 5,000xg for 5min.2. Carefully open the tube and add 100ul of sterile water to dissolve the DNA.3. Close the tube and incubate for 10 minutes at room temperature.4. Briefly vortex the tube and then do a quick spin (less than 5000xg) to concentrate the liquid at the bottom.5. Store the suspended plasmid at -20°C. The DNA is stable for at least one year from date of shipping when stored at -20°C.
RefSeq:	NM_001040092.3
RefSeq Size:	3120 bp
RefSeq ORF:	2592 bp
Locus ID:	5168
UniProt ID:	Q13822
Cytogenetics:	8q24.12
Protein Families:	Druggable Genome, Transcription Factors, Transmembrane
Protein Pathways:	Ether lipid metabolism
MW:	99 kDa
Gene Summary:	The protein encoded by this gene functions as both a phosphodiesterase, which cleaves phosphodiester bonds at the 5' end of oligonucleotides, and a phospholipase, which catalyzes production of lysophosphatidic acid (LPA) in extracellular fluids. LPA evokes growth factor-like responses including stimulation of cell proliferation and chemotaxis. This gene product stimulates the motility of tumor cells and has angiogenic properties, and its expression is upregulated in several kinds of carcinomas. The gene product is secreted and further processed to make the biologically active form. Several alternatively spliced transcript variants encoding different isoforms have been identified. [provided by RefSeq, Aug 2008]

Product images:



Circular map for RC205377



Western blot validation of overexpression lysate (Cat# [LY421669]) using anti-DDK antibody (Cat# [TA50011-100]). Left: Cell lysates from untransfected HEK293T cells; Right: Cell lysates from HEK293T cells transfected with RC205377 using transfection reagent MegaTran 2.0 (Cat# [TT210002]).