

Product datasheet for **RC205375**

AGFG1 (NM_004504) Human Tagged ORF Clone

Product data:

Product Type:	Expression Plasmids
Product Name:	AGFG1 (NM_004504) Human Tagged ORF Clone
Tag:	Myc-DDK
Symbol:	AGFG1
Synonyms:	HRB; RAB; RIP
Mammalian Cell Selection:	Neomycin
Vector:	pCMV6-Entry (PS100001)
E. coli Selection:	Kanamycin (25 ug/mL)



[View online »](#)

ORF Nucleotide Sequence:

>RC205375 ORF sequence
 Red=Cloning site Blue=ORF Green=Tags(s)

TTTTGTAATACGACTCACTATAGGGCGGCCGGGAATTCGTCGACTGGATCCGGTACCGAGGAGATCTGCC
 GCC**CGGATCGCC**

ATGGCGGCCAGCGGAAGCGGAAGCAGGAGGAGAAGCACCTGAAGATGCTGCGGGACATGACCCGGCCTCC
 CGCACAACCGAAAAGTGTTCGACTGCGACCAGCGCGGCCACCTACGTTAACATGACGGTCGGCTCCTT
 CGTGTGTACCTCTGCTCCGGCAGCCTGCGAGGATTAATCCACCACACAGGGTGAATCTATCTCCATG
 ACAACATTCACACAACAGGAAATTGAATCTTACAAAAACATGGAATGAAGTCTGTAAGCAGATTTGGC
 TAGGATTATTTGATGATAGATCTTCAGCAATCCAGACTTCAGGGATCCACAAAAAGTAAAAGATTTCT
 ACAAGAAAAGTATGAAAAGAAAAGATGGTATGTCCCGCCAGAACAAGCCAAAGTCGTGGCAGTTCAT
 GCATCTATTTAGGGTCTCTGCCAGTAGCACAAGCAGCACACCTGAGGTCAAACACTGAAATCTCTTT
 TAGGGGATTCTGCACCAACTGCACCTAAATAAGGGCACACCTAGTCAGTCCCCAGTTGTAGGTCGTTT
 TCAAGGGCAGCAGCAGGAGAAGAAGCAATTTGACCTTTAAGTGATCTCGGCTCAGACATCTTTGCTGCT
 CCAGCTCCTCAGTCAACAGCTACAGCCAATTTGCTAACTTTGCACATTTCAACAGTCATGCAGCTCAGA
 ATTCTGCAAAATGCAGATTTTGCAAACTTTGATGCATTTGGACAGTCTAGTGGTTCGAGTAATTTTGAGG
 TTTCCCCACAGCAAGTCACTCTCCTTTTCAGCCCCAACTACAGGTGGAAGTGTGCATCAGTAAATGCT
 AATTTTGCTCATTTTGATAACTTCCCCAACTCCTCCAGTGTGATTTTGGAACTTCAACTTCCCAGA
 GTCATCAAACAGCATCAGCTGTTAGTAAAGTTCAACGAACAAAGCTGGTTTACAGACTGCAGACAAATA
 TGCAGCACTTGCTAATTTAGACAATATCTTCAGTGCCGGGCAAGGTGGTATCAGGGAAGTGGCTTTGGG
 ACCACAGGTAAGCTCCTGTTGGTCTGTGGTTTCAGTCCCAGTCAGTCAAGTGCATCTTCAGACAAGT
 ATGCAGCTCTGGCAGAACTAGACAGCGTTTTTCAGTTCTGCAGCCACCTCCAGTAATGCGTATACTTCCAC
 AAGTAATGCTAGCAGCAATGTTTTTGAACAGTGCCAGTGGTGTCTTCTGCACAGACACAGCCTGCTTCA
 TCAAGTGTGCTGCTCCATTTGGAGCTACGCCTTCCACAATCCATTTGTTGCTGCTGCTGGTCTTCTG
 TGGCATCTTACAAAACCCATTTTCAGACCAATGCCAGAGGAGCAACAGCGGCAACCTTTGGCACTGCATC
 CATGAGCATGCCACGGGATTCGGCACTCTGCTCCCTACAGTCTTCCCACCAGCTTTAGTGGCAGCTTT
 CAGCAGCTGCCTTTCCAGCCCAAGCAGCTTCCCTCAACAGACAGCTTTTTCTCAACAGCCCAATGGTG
 CAGGTTTTGCAGCATTGGACAAACAAAGCCAGTAGTAACCCCTTTTGGTCAAGTGCAGCTGCTGGAGT
 ATCTAGTAATCCTTTTATGACTGGTGCACCAACAGGACAATTTCAACAGGAAGCTCATCAACCAATCCT
 TTCTTA

ACGCGTACGCGGGCCGCTCGAGCAGAAACTCATCTCAGAAGAGGATCTGGCAGCAAATGATATCCTGGATT
 ACAAGGATGACGACGATAAGGTTTAA

Protein Sequence:

>RC205375 protein sequence
 Red=Cloning site Green=Tags(s)

MAASAKRKQEEKHLKMLRDMTGLPHNRKCFDQDQRPYVNMVGSFVCTSCSGSLRGLNPPHRVKSISM
 TTFTQQEIEFLQKHGNEVCKQIWLGLFDDRSSAIPDFRDPQKVKEFLQEKEYEKRWYVPEQAKVVASVH
 ASISGSSASSTSTPEVKPLKSLLGDSAPTLHLNKGTPSQSPVVGSRGQQQEKQFDLLSDLGSDIFAA
 PAPQSTATANFANFAHFNSHAAQNSANADFANFDFGQSSGSSNFGGFPPTASHSPFPQPTTGSSAASVNA
 NFAHFDNFPKSSSADFGTFNTSQSHQTASAVSKVSTNKAGLQTADKYAALANLDNIFSAGQGGDQGSFG
 TTGKAPVGSVSVSPSSASSDKYAALAE LDSVFSSAATSSNAYTSTSNASSNVFVTPVVASAQTQPAS
 SSVPPAPFGATPSTNPFVAAAGPSVASSTNPFQTNARGATAATFGTASMSMPTGFGTPAPYSLPTSFSGSF
 QQPAFPAQAAFPQQTAFSQQPNGAGFAAFGQTKPVVTPFGQVAAAGVSSNPFMTGAPTGFPTGSSSTNP
 FL

TRTRPLEQKLISEEDLAANDILDYKDDDDKV

Chromatograms:

https://cdn.origene.com/chromatograms/mk6138_c12.zip

Restriction Sites:

Sgfl-Mlul

Cloning Scheme:


ACCN: NM_004504

ORF Size: 1686 bp

OTI Disclaimer: The molecular sequence of this clone aligns with the gene accession number as a point of reference only. However, individual transcript sequences of the same gene can differ through naturally occurring variations (e.g. polymorphisms), each with its own valid existence. This clone is substantially in agreement with the reference, but a complete review of all prevailing variants is recommended prior to use. [More info](#)

OTI Annotation: This clone was engineered to express the complete ORF with an expression tag. Expression varies depending on the nature of the gene.

Components: The ORF clone is ion-exchange column purified and shipped in a 2D barcoded Matrix tube containing 10ug of transfection-ready, dried plasmid DNA (reconstitute with 100 ul of water).

- Reconstitution Method:**
1. Centrifuge at 5,000xg for 5min.
 2. Carefully open the tube and add 100ul of sterile water to dissolve the DNA.
 3. Close the tube and incubate for 10 minutes at room temperature.
 4. Briefly vortex the tube and then do a quick spin (less than 5000xg) to concentrate the liquid at the bottom.
 5. Store the suspended plasmid at -20°C. The DNA is stable for at least one year from date of shipping when stored at -20°C.

RefSeq: [NM_004504.5](#)

RefSeq Size: 8684 bp

RefSeq ORF: 1689 bp

Locus ID: 3267

UniProt ID: [P52594](#)

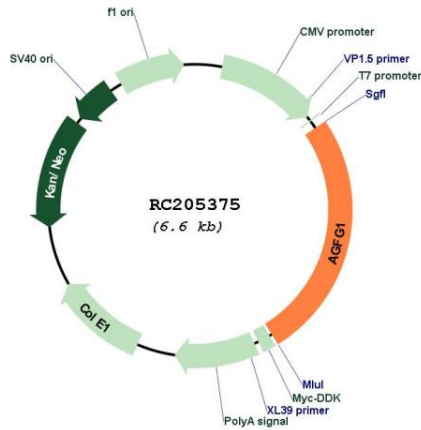
Cytogenetics: 2q36.3

Domains: ArfGap

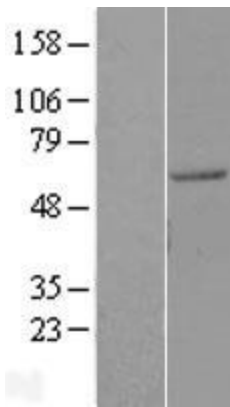
MW: 58.3 kDa

Gene Summary: The protein encoded by this gene is related to nucleoporins, a class of proteins that mediate nucleocytoplasmic transport. The encoded protein binds the activation domain of the human immunodeficiency virus Rev protein when Rev is assembled onto its RNA target, and is required for the nuclear export of Rev-directed RNAs. Multiple transcript variants encoding different isoforms have been found for this gene. [provided by RefSeq, Sep 2008]

Product images:



Circular map for RC205375



Western blot validation of overexpression lysate (Cat# [LY401433]) using anti-DDK antibody (Cat# [TA50011-100]). Left: Cell lysates from untransfected HEK293T cells; Right: Cell lysates from HEK293T cells transfected with RC205375 using transfection reagent MegaTran 2.0 (Cat# [TT210002]).