

## Product datasheet for **RC205373**

### **cIAP1 (BIRC2) (NM\_001166) Human Tagged ORF Clone**

#### **Product data:**

Product Type:	Expression Plasmids
Product Name:	cIAP1 (BIRC2) (NM_001166) Human Tagged ORF Clone
Tag:	Myc-DDK
Symbol:	cIAP1
Synonyms:	API1; c-IAP1; cIAP1; Hiap-2; HIAP2; MIHB; RNF48
Mammalian Cell Selection:	Neomycin
Vector:	pCMV6-Entry (PS100001)
E. coli Selection:	Kanamycin (25 ug/mL)



[View online »](#)

**ORF Nucleotide Sequence:**

>RC205373 ORF sequence  
 Red=Cloning site Blue=ORF Green=Tags(s)

TTTTGTAATACGACTCACTATAGGGCGGCCGGGAATTCGTCGACTGGATCCGGTACCGAGGAGATCTGCC  
 GCC**CGCATCGCC**

ATGCACAAAACACTGCCTCCCAAAGACTTTTCCAGTGCCCTCGTATCAAAACATTAAGAGTATAATGGAAG  
 ATAGCACGATCTTGTGAGATTGGACAAACAGCAACAAACAAAAATGAAGTATGACTTTTCTGTGAACT  
 CTACAGAAATGTCTACATATTCAACTTTCCCGCCGGGGTGCCTGTCTCAGAAAGGAGTCTTGCTCGTGCT  
 GGTTTTTATTACTGGTGTGAATGACAAGGTCAAATGCTTCTGTGTGGCCTGATGCTGGATAACTGGA  
 AACTAGGAGACAGTCTATTCAAAGCATAAACAGCTATATCCTAGCTGTAGCTTTATTCAGAATCTGGT  
 TTCAGCTAGTCTGGATCCACCTCTAAGAATACGTCTCCAATGAGAAACAGTTTTGCACATTCATTATCT  
 CCCACCTTGGAACATAGTAGCTTGTTCAGTGGTCTTACTCCAGCCTTTTCCAAACCCTCTTAATTCTA  
 GAGCAGTTGAAGACATCTTTCATCGAGGACTAACCCCTACAGTTATGCAATGAGTACTGAAGAAGCCAG  
 ATTTCTTACCTACCATATGTGGCCATTAACTTTTTGTCAACCATCAGAATTGGCAAGAGCTGGTTTTTAT  
 TATATAGGACCTGGAGATAGGGTAGCCTGCTTTCCTGTGGTGGGAAGCTCAGTAACTGGGAACCAAAGG  
 ATGATGCTATGTGAGAACACCGGAGGCATTTTCCCAACTGTCCATTTTGGAAAAATCTCTAGAAACTCT  
 GAGGTTTAGCATTTCAAATCTGAGCATGCAGACACATGCAGCTCGAATGAGAACATTTATGTACTGGCCA  
 TCTAGTGTTCAGTTCAGCCTGAGCAGCTTGAAGTGTGGTTTTTATTATGTGGGTGCGCAATGATGATG  
 TCAAATGCTTTTGTGTGATGGTGGCTTGAAGTGTGGGAATCTGGAGATGATCCATGGGTAGAACATGC  
 CAAGTGGTTTCCAAGGTGTGAGTCTTGATACGAATGAAAGGCCAAGAGTTTGTGTGATGAGATCAAGGT  
 AGATATCTCATCTTCTGAACAGCTGTTGTCAACTCAGATACCACTGGAGAAGAAAATGCTGACCCAC  
 CAATTATTCATTTTGGACCTGGAGAAAGTCTTTCAGAAGATGCTGTGATGATGAATACACCTGTGGTTAA  
 ATCTGCCTTGGAAATGGGCTTTAATAGAGACCTGGTGAACAAACAGTTCAAAGTAAAAATCTGACAAC  
 GGAGAGAACTATAAAACAGTTAATGATATTGTGTGAGCACTTCTTAATGCTGAAGATGAAAAAGAGAAG  
 AGGAGAAGGAAAAACAAGCTGAAGAAATGGCATCAGATGATTTGTCTTAATTCGGAAGAACAGAATGGC  
 TCTCTTCAACAATTGACATGTGTGCTTCTATCTGGATAATCTTTAAAGGCCAATGTAATTAATAAA  
 CAGGAACATGATATTATTAACAAAAACACAGATACCTTTACAAGCGAGAGAAGTATTGATACCATTT  
 TGGTTAAAGGAAATGCTGCGCCAACATCTTCAAAAAGTCTAAAAGAAATGACTCTACATTGTATAA  
 GAACCTATTTGTGATAAGAATATGAAGTATATCCAACAGAAGATGTTTCAGGTCTGCTACTGGAAGAA  
 CAATTGAGGAGTTGCAAGAAGAACGAAGTGTAAAGTGTGATGGACAAAGAAGTTTCTGTTGTATTTA  
 TTCTTGTGGTCACTGGTAGTATGCCAGGAATGTGCCCTTCTCTAAGAAAATGCCCTATTTGCAGGGG  
 TATAATCAAGGGTACTGTTCTGACATTTCTCTCT

**ACGCGT**ACGCGGCCGCTCGAGCAGAAACTCATCTCAGAAGAGGATCTGGCAGCAAATGATATCCTGGATT  
 ACAAGGATGACGACGATAAGGTTTAA

**Protein Sequence:**

>RC205373 protein sequence  
 Red=Cloning site Green=Tags(s)

MHKTASQRLFPGPSYQNIKSIMEDSTILSDWTNSNKQMKYDFSCELYRMSTYSTFPAGVPVSESLARA  
 GFYYTGVNDKVKCFCCGLMLDNWKLGDSPIQKHQQLYPCSFQNLVSASLGSTSKNTSPMRNSFAHLS  
 PTLHSSLFSGSYSSLSPNPLNSRAVEDISSRTNPYSYAMSTEEARFLTYHMWPLTFLSPSELARAGFY  
 YIGPGDRVACFACGGKLSNWEPKDDAMSEHRRHFPNCPFLENSLETLRFSISNL SMQTHAARMRTFMYWP  
 SSVPVQPEQLASAGFYVGRNDDVKCFCCDGLRCWESGDDPWVEHAKWFP RCEFLIRMKGQEFVDEIQG  
 RYPHLLLEQLLSTSDTTGEENADPPIIHFPGESSEDAVMMNTPVVKSALEMGNRDLVKQTVQSKILTT  
 GENYKTVNDIVSALLNAEDEKREEEKEQAEEMASDDL SIRKNRMALFQQLTCVLPILDNLLKANVINK  
 QEHDIIKQKTQIPLQARELIDTILVKGNAAANIFKNLKEIDSTLYKNLFDKNMKYIPTEDVSGLSLEE  
 QLRLRQEERTCKVCMDEKESVVFIPCGHLVVCQECAPSLRKPCICRGIKGTVRTFLS

**TR**TRPLEQKLISEEDLAANDILDYKDDDDKV

**Chromatograms:** [https://cdn.origene.com/chromatograms/mk6196\\_c04.zip](https://cdn.origene.com/chromatograms/mk6196_c04.zip)

**Restriction Sites:** SgfI-MluI

**Cloning Scheme:**



**ACCN:** NM\_001166

**ORF Size:** 1854 bp

**OTI Disclaimer:** The molecular sequence of this clone aligns with the gene accession number as a point of reference only. However, individual transcript sequences of the same gene can differ through naturally occurring variations (e.g. polymorphisms), each with its own valid existence. This clone is substantially in agreement with the reference, but a complete review of all prevailing variants is recommended prior to use. [More info](#)

**OTI Annotation:** This clone was engineered to express the complete ORF with an expression tag. Expression varies depending on the nature of the gene.

**Components:** The ORF clone is ion-exchange column purified and shipped in a 2D barcoded Matrix tube containing 10ug of transfection-ready, dried plasmid DNA (reconstitute with 100 ul of water).

- Reconstitution Method:**
1. Centrifuge at 5,000xg for 5min.
  2. Carefully open the tube and add 100ul of sterile water to dissolve the DNA.
  3. Close the tube and incubate for 10 minutes at room temperature.
  4. Briefly vortex the tube and then do a quick spin (less than 5000xg) to concentrate the liquid at the bottom.
  5. Store the suspended plasmid at -20°C. The DNA is stable for at least one year from date of shipping when stored at -20°C.

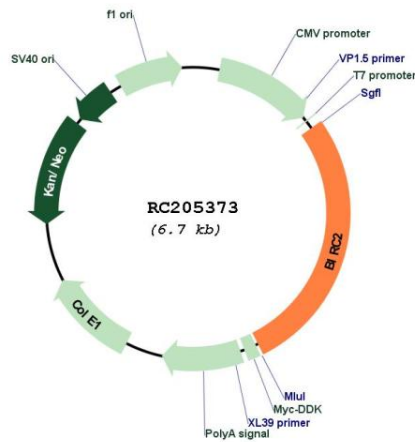
**Note:** Plasmids are not sterile. For experiments where strict sterility is required, filtration with 0.22um filter is required.

**RefSeq:** [NM\\_001166.4](#)

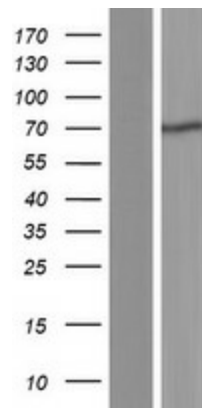
**RefSeq Size:** 3813 bp

RefSeq ORF:	1857 bp
Locus ID:	329
UniProt ID:	<a href="#">Q13490</a>
Cytogenetics:	11q22.2
Domains:	CARD, BIR, RING
Protein Families:	Druggable Genome
Protein Pathways:	Apoptosis, Focal adhesion, NOD-like receptor signaling pathway, Pathways in cancer, Small cell lung cancer, Ubiquitin mediated proteolysis
MW:	69.9 kDa
Gene Summary:	The protein encoded by this gene is a member of a family of proteins that inhibits apoptosis by binding to tumor necrosis factor receptor-associated factors TRAF1 and TRAF2, probably by interfering with activation of ICE-like proteases. This encoded protein inhibits apoptosis induced by serum deprivation and menadione, a potent inducer of free radicals. Alternatively spliced transcript variants encoding different isoforms have been found for this gene. [provided by RefSeq, Jan 2012]

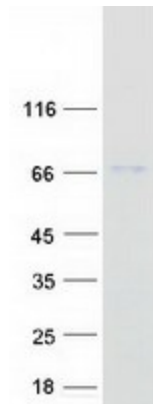
**Product images:**



Circular map for RC205373



Western blot validation of overexpression lysate (Cat# [LY400468]) using anti-DDK antibody (Cat# [TA50011-100]). Left: Cell lysates from untransfected HEK293T cells; Right: Cell lysates from HEK293T cells transfected with RC205373 using transfection reagent MegaTran 2.0 (Cat# [TT210002]).



Coomassie blue staining of purified BIRC2 protein (Cat# [TP305373]). The protein was produced from HEK293T cells transfected with BIRC2 cDNA clone (Cat# RC205373) using MegaTran 2.0 (Cat# [TT210002]).