

Product datasheet for **RC205369**

ICAM5 (NM_003259) Human Tagged ORF Clone

Product data:

Product Type:	Expression Plasmids
Product Name:	ICAM5 (NM_003259) Human Tagged ORF Clone
Tag:	Myc-DDK
Symbol:	ICAM5
Synonyms:	TLCN; TLN
Mammalian Cell Selection:	Neomycin
Vector:	pCMV6-Entry (PS100001)
E. coli Selection:	Kanamycin (25 ug/mL)



[View online »](#)

**ORF Nucleotide
Sequence:**

>RC205369 representing NM_003259
 Red=Cloning site Blue=ORF Green=Tags(s)

TTTTGTAATACGACTCACTATAGGGCGGCCGGAATTCGTCGACTGGATCCGGTACCGAGGAGATCTGCC
 GCC**GCGATCGCC**

ATGCCAGGGCCTTCGCCAGGGCTGCGCCGGCGCTACTCGGCCTCTGGGCTGCTCTGGCCCTGGGGCTCT
 TCGGCCTCTCAGCGGTCTCGCAGGAGCCCTTCTGGCGGACCTGCAGCCTCGCGTGGCGTTCGTGGAGCG
 CGGGGGCTCGCTGTGGCTGAATTGCAGCACCAACTGCCCTCGGCCGAGCGCGGTGGCTGGAGACCTCG
 CTGCGCCGAAACGGGACCCAGAGGGTTTGCCTGGTTGGCGCGCAGCTGGTGGACATTCGCGAGCCGG
 AGACTCAGCCCTGCTGTTCTCCGCTGCGCGCGGCACACTACAGGCGCGTGGGCTCATTGCACTTT
 CCAGCGACAGATCGCGTAGAGCTGATGCCGCTGCCTCCCTGGCAGCCGGTGGCGAGAACTTACCCTG
 AGCTGTAGGGTCCCCGGCGCCGGCCCCGTGCGAGCCTCAGCTGACCCTGCTGCGGGGCGCCAGGAGC
 TGATCCGCGCAGCTTCGCGGTGAACCACCCGAGCGCGGGCGCGGTGCTCACAGCCACGGTACTGGC
 TCGGAGGGAGGACCATGGAGCAATTTCTCGTGTGCGCGCAGCTGGACCTGCGGCCGACGGACTGGGA
 CTGTTTAAAAACAGCTCGGCCCCAGAGAGCTCCGAACCTTCTCCCTGTCTCCGGATGCCCGCGCCTCG
 CTGCTCCCCGGCTCTTGAAGTTGGCTCGAAAGGCCCTGAGCTGCACTCTGGACGGACTGTTCCAGC
 CTCAGAGGCCAGGGTCTACCTCGCACTGGGGGACCAGAATCTGAGTCTGATGTCACCCTCGAAGGGGAC
 GCATTCGTGGCCACTGCCACAGCCACAGCTAGCGCAGAGCAGGAGGGTGGCAGGCAGCTGGTCTGCAACG
 TCACCCTGGGGGGCGAAAACCGGGAGACCCGGGAGAACGTGACCATCTACAGTTCCTCCGGCACCCTCT
 GACCCTGAGCGAACCCAGCGTCTCCGAGGGCAGATGGTGACAGTAACCTGCGCAGCTGGGGCCAAAGCT
 CTGGTACACTGGAGGGAGTTCCAGCCCGGTCCCGGGGACCCCGCCAGCTTCAGCTAAATGCCACCG
 AGAACGACGACAGACGACGCTTCTTCTGCGACGCCACCCTCGATGTGGACGGGGAGACCCCTGATCAAGAA
 CAGGAGCGCAGAGCTTCGTGTCTTACGCTCCCGGCTAGACGATTTCGACTGCCCCAGGAGTTGGACG
 TGGCCCGAGGGCCAGAGCAGACGCTGCGCTGCGAGGCCCGGGAAACCCAGAACCCTCAGTGCAGTGTG
 CGCGCTCCGACGGCGGGCCGTGCTGGCTCTGGCCTGCTGGGTCCAGTCACTCGGGCGCTCTCAGGCAC
 TTACCGCTGCAAGGCGGCAATGATCAAGGCGAGGCGGTCAAGGACGTAACGCTAACGGTGGAGTACGCA
 CCAGCGCTGGACAGCGTGGGCTGCCAGAACGCATTACTTGGCTGGAGGGAACAGAAGCCTCGTGAAGT
 GTGTGGCGCACGGGTACCGCCGCTGATGTGATCTGCGTGCCTCTGGAGAACTCGGGCCGTCATCGA
 GGGGCTGTTGCGTGTGGCCGGGAGCATCGGGCACTTACCGCTGCGAAGCCACCAACCCTCGGGGCTCT
 GCGGCCAAAAATGTGGCGTACGGTGAATATGGCCCCAGGTTTGAAGGCGGAGCTGCCCCAGCAATT
 GGACATGGGTGGAAGGATCTGGCGCCTGTTTTCTGTGAGGTGATGGGAAGCCACAGCCAAGCGTGAA
 GTGCGTGGGCTCCGGGGCGCCACTGAGGGGTGCTGCTGCCGCTGGCACCCCCAGACCCTAGTCCCAGA
 GCTCCCAGAAATCCCTAGAGTCTTGGCACCCGGTATCTACGCTTGAACGCCACCAACCAGCCACGGTCCG
 TGGCCAAAACAGTCGTGAGCGCGGAGTCCGCCACCGGAGATGGATGAATCTACCTGCCAAGTACCA
 GACGTGGCTGGAAGGGGCTGAGGCTTCCGCGTGGCTGCGCCGCGCCGGGTGCGCCTTCCCAGGAGTG
 CGCTGCTCTCGGAAGGCATCCCATGGCCTGAGCAGCAGCGCGTGTCCGAGAGGACCGGGCACTTACC
 ACTGTGTGGCCACCAATGCGCATGGCACGGACTCCCGACCGTCACTGTGGCGTGAATACCGGCCAGT
 GGTGGCCGAATGCTGCCTCGCCCCCTGGAGGCGTGCGCCAGGAGAACTTACGTTGACCTGCCCGC
 GCGGAGGCTGGCTCCAGCCCAGATCAGCTGGCGCGCCTCCCGGGGGCCCTCAACATCGGCTGTGGA
 GCAACAACAGCACACTGAGCGTGGCAGGCGCATGGGAAGCCACGGCGGCGAGTACGAGTGCAGCCAC
 CAACGCGCACGGGCGCCACGCGCGGCATCACGGTGCAGTGGCCGGTCCGTGGCTATGGTTCGCGGTG
 GGCGGCGCGGGGGGGCGCGCGCTGCTGGCCGCGGGGCGCGCTGGCCTTCTACGTGCAGTCCACCG
 CCTGCAAGAAGGGCGAGTACAACGTGCAGGAGGCCGAGAGCTCAGGCGAGGCCGTGTGCTGAACGGAGC
 GGGCGGCGCGCTGGCGGGGCGGACGGCGGAGGGCGGACCCGAGGCGGGGGGGCGCGCCGAGTCCG
 CCGGCGGAGGGCGAGTCTTCGCCATACAGCTGACATCGGCG

ACGCGTACGCGGCGCTCGAGCAGAACTCATCTCAGAAGAGGATCTGGCAGCAAATGATATCCTGGATT
 ACAAGGATGACGACGATAAGGTTTAA

Protein Sequence: >RC205369 representing NM_003259
 Red=Cloning site Green=Tags(s)

```

MPGPPSGLRRALLGLWAALGLGLFGLSAVSQEPFWADLQPRVAFVERGGSLWLNCSNCPRPREGGLETSL
LRRNGTQRGLRWLARQLVDIREPETQPVCFFRCARRTLQARGLIRTFQRPDRVELMPLPPWQPVGENFTL
SCRVPGAGPRASLTLLLRGAQELIRRSFAGEPPRARGAVLTATVLARREDHGANFSCRAELDLRPHGLG
LFENSSAPRELRTFSLSPDAPRLAAPRLLEVGSERPVSCTLDGLFPASEARVYLALGDQNLSPDVTLEGD
AFVATATATASAEQEGARQLVCNVTLGGENRETRNVTIYSFPAPLLTLSEPSVSEGMVTVTCAAGAQA
LVTLEGVPAAVPGQPAQLQLNATENDRRSFFCDATLDVDGETLIKNSAELRVLVYAPRLDDSDCPRSWT
WPEGEQTLRCEARGNPEPSVHCARSDGGAVLALGLLGPVTRALSGTYRCKAANDQGEAVKDVTLTVEYA
PALDSVGCPERITWLEGTEASLSCVAHGVPPDPVICVRSSELGAVIEGLLRVAREHAGTYRCEATNPRGS
AAKNVAVTVEYGRPFEEPCPSNWTWVEGSGRLFSCVDGKPKQPSVKCVGSGGATEGVLLPLAPPDPSR
APRIPRVLAPGIYVCNATNRHGSVAKTVVVSASPEMDESTCPSHQTWLEGAEASALACAARGPSPGV
RCSREGIPWPEQQRVSREDAGTYHCVATNAHGTDSTRTVTVGVEYRPVVAELAASPPGGVVRPGGNFTLTCR
AEAWPPAQISWRAPPALNIGLSSNNSTLSVAGAMGSHGGYECAATNAHGRHARRITVRVAGPWLWVAV
GGAAGGAALLAAGAGLAFYVQSTACKKGEYNVQEAESSGEAVCLNGAGGGAGGAAGAEGGPEAAGGAES
PAEGEVFAIQLTSA
  
```

TRTRPLEQKLISEEDLAANDILDYKDDDDKV

Chromatograms: https://cdn.origene.com/chromatograms/mk8112_h12.zip

Restriction Sites: SgfI-MluI

Cloning Scheme:

Cloning sites used for ORF Shuttling:



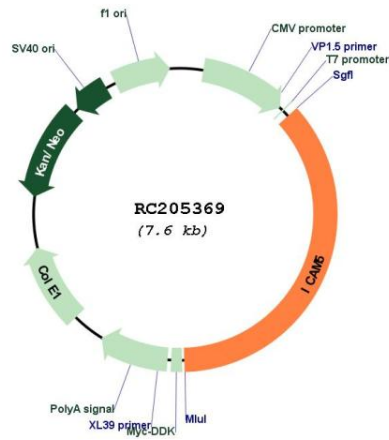
* The last codon before the Stop codon of the ORF

ACCN: NM_003259

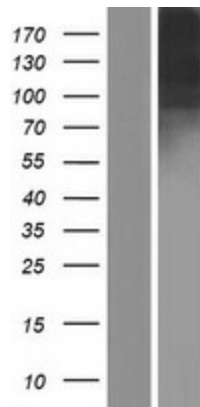
ORF Size: 2772 bp

OTI Disclaimer:	The molecular sequence of this clone aligns with the gene accession number as a point of reference only. However, individual transcript sequences of the same gene can differ through naturally occurring variations (e.g. polymorphisms), each with its own valid existence. This clone is substantially in agreement with the reference, but a complete review of all prevailing variants is recommended prior to use. More info
OTI Annotation:	This clone was engineered to express the complete ORF with an expression tag. Expression varies depending on the nature of the gene.
Components:	The ORF clone is ion-exchange column purified and shipped in a 2D barcoded Matrix tube containing 10ug of transfection-ready, dried plasmid DNA (reconstitute with 100 ul of water).
Reconstitution Method:	<ol style="list-style-type: none">1. Centrifuge at 5,000xg for 5min.2. Carefully open the tube and add 100ul of sterile water to dissolve the DNA.3. Close the tube and incubate for 10 minutes at room temperature.4. Briefly vortex the tube and then do a quick spin (less than 5000xg) to concentrate the liquid at the bottom.5. Store the suspended plasmid at -20°C. The DNA is stable for at least one year from date of shipping when stored at -20°C.
RefSeq:	NM_003259.4
RefSeq Size:	3005 bp
RefSeq ORF:	2775 bp
Locus ID:	7087
UniProt ID:	Q9UMF0
Cytogenetics:	19p13.2
Protein Families:	Transmembrane
MW:	97.1 kDa
Gene Summary:	The protein encoded by this gene is a member of the intercellular adhesion molecule (ICAM) family. All ICAM proteins are type I transmembrane glycoproteins, contain 2-9 immunoglobulin-like C2-type domains, and bind to the leukocyte adhesion LFA-1 protein. This protein is expressed on the surface of telencephalic neurons and displays two types of adhesion activity, homophilic binding between neurons and heterophilic binding between neurons and leukocytes. It may be a critical component in neuron-microglial cell interactions in the course of normal development or as part of neurodegenerative diseases. [provided by RefSeq, Jul 2008]

Product images:



Circular map for RC205369



Western blot validation of overexpression lysate (Cat# [LY418806]) using anti-DDK antibody (Cat# [TA50011-100]). Left: Cell lysates from untransfected HEK293T cells; Right: Cell lysates from HEK293T cells transfected with RC205369 using transfection reagent MegaTran 2.0 (Cat# [TT210002]).