

Product datasheet for RC205368

PTPRN2 (NM_130843) Human Tagged ORF Clone

Product data:

Product Type:	Expression Plasmids
Product Name:	PTPRN2 (NM_130843) Human Tagged ORF Clone
Tag:	Myc-DDK
Symbol:	PTPRN2
Synonyms:	IA-2beta; IAR; ICAAR; PTPRP; R-PTP-N2
Mammalian Cell Selection:	Neomycin
Vector:	pCMV6-Entry (PS100001)
E. coli Selection:	Kanamycin (25 ug/mL)
ORF Nucleotide Sequence:	>RC205368 ORF sequence Red=Cloning site Blue=ORF Green=Tags(s)

TTTTGTAATACGACTCACTATAGGGCGGCCGGAATTCGTCGACTGGATCCGGTACCGAGGAGATCTGCC
GCC**CGATCGC**C

ATGGGGCCCGCTCCCGCTGCTGCTGCTACTGCTGCTGCTGCCGCCACGCGTCTGCCTGCCGCC
CTTCGTCCTGCCCGCGGCCGAGCTCCCGGGCGTCTGGGCTGCCTGCTCGAGGAGGGCCTCTGCGG
AGCGTCCGAGGCCTGTGAACGATGGAGTGTGGAAAGTGCCAGAAGGTTCCGGCAATGGACTTTAC
CGCTACGAGGTGTCGCCCTGCCCTGCAGCGCTGCGCGTGGCGTTGCAGAAGCTTTCCGGCACAGGTT
TCACGTGGCAGGATGACTATACTCAGTATGTGATGGACCAGGAAGTTGCAGACCTCCCGAAAACCTACCT
GAGGCGTCTGAAGCATCCAGCCAGCCAGGCCCTCAAAAACACAGCGTTGGCAGCGAGAGGAGGTACAGT
CGGGAGGGCGGTGCTGCCCTGGCCAACGCCCTCCGACGCCACCTGCCCTTCTGGAGGCCCTGTCCAGG
CCCCAGCCTCAGACGTGCTCGCCAGGACCCATACGGCGCAGGACAGACCCCGCTGAGGGTGATGACCG
CTTCTCCGAGAGCATCCTGACCTATGTGGCCACACGTCTGCGCTGACCTACCCTCCCGGGCCCCGACC
CAGCTCCGCGAGGACCTCCTGCCCGGACCCTCGGCCAGCTCCAGCCAGATGAGCTCAGCCCTAAGGTGG
ACAGTGGTGTGGACAGACACCATCTGATGGCGGCCCTCAGTGCCTATGCTGCCAGAGGCCCCAGCTCC
CCCCGGGAGGGCAGCCTGGAGCCACAGTACCTTCTGCGTGCACCCTCAAGAATGCCAGGCCTTTGCTG
GCACCAGCCGCCCCAGAAGTGGCCTTACCTCTGGGAGATCCGAAGACCCCTTAGCACAGGCGGATG
GAGCACGGATTACATACCCTCCTGAAGGACCTGCAGAGGCAGCCGGCTGAGGTGAGGGGCCTGAGTGGCCT
GGAGCTGGACGGCATGGCTGAGCTGATGGCTGGCCTGATGCAAGCGTGGACCATGGAGTACTCGAGGC
AGCCCTGGGAGAGCGGCCCTGGGAGAGTCTGGAGAACAGGCGGATGGCCCAAGGCCACCCTCCGTGGAG
ACAGCTTTCCAGATGACGGAGTGCAGGACGACGATGATAGACTTTACCAAGAGGTCCATCGTCTGAGTGC
CACACTCGGGGGCCTCCTGCAGGACCACGGGTCTCGACTTTACCTGGAGCCCTCCCTTTGCAAGGCC
CTCGACATGGAGAGGAAGAAGTCCGAGCACCCCTGAGTCTCCCTGTCTTCAAGAGGAGACTGCCGGAG
TGGAGAACGTCAAGAGCCAGACGATTTCCAAAGATCTGCTGGGGCAGCAGCCGATTCGGAGCCCGGGC
CGCTGCGTTTGGGAGCTCCAAAACAGATGCCTGGGCCCTCGAAGGAGGAGCAGAGCCTCCAGCGGGT



GCTCAGGAGGCCCTCAGCGACGGCCTGCAATTGGAGGTCCAGCCTTCGAGGAAGAGGCGCGGGCTACA
 TCGTGACAGACAGAGAGGTTCTCGGACCAGCAGTGACCTTCAAAGTGAGCGCAAATGTCCAAAACGTGAC
 CACTGAGGATGTGGAGAAGGCCACAGTTGACAACAAAGACAACTGGAGGAAACCTCTGGACTGAAAATT
 CTTCAAACCGGAGTCGGGTCGAAAAGCAAACCTCAAGTTCTGCCTCCTCAGGCGGAGCAAGAAGACTCCA
 CCAAGTTCATCGCGCTCACCTGGTCTCCCTCGCTGCATCCTGGGCGTCTCTGGCCTCTGGCCTCAT
 CTACTGCCTCCGCATAGCTCTCAGCACAGGCTGAAGGAGAAGCTCTCGGACTAGGGGGCGACCCAGGT
 GCAGATGCCACTGCCGCCTACCAGGAGCTGTGCCAGCGTATGGCCACGCGGCCACAGACCCGACCTG
 AGGGCCCGCACACGTACGCATCAGCAGCTCATCCCAGTTACGCGACGGGCGGATCCCCAGCCCTC
 CGCACGCAGCAGCGCTCATCTGGTCCGAGGAGCCTGTGCAGTCCAACATGGACATCTCAACCGGCCAC
 ATGATCTGTCTACATGGAGGACCACCTGAAGAACAAGAACCGGCTGGAGAAGGAGTGGGAAGCGCTGT
 GCGCTACCAGGCGGAGCCCAACAGCTCGTTCGTGGCCAGAGGGAGGAGAACGTGCCAAGAACCCTC
 CCTGGCTGTGCTGACCTATGACCACTCCCGGTCTGCTGAAGGCGGAGAACAGCCACAGCCACTCAGAC
 TACATCAACGCTAGCCCTATCATGGATCACGCCCGAGGAACCCCGCTACATCGCCACCAGGGACCGC
 TGCCCGCCACCGTGGCTGACTTTTGGCAGATGGTGTGGGAGAGCGGCTGCGTGGTATCGTCATGCTGAC
 ACCCTCGCGGAGAACGGCGTCCGGCAGTGTACCACTACTGGCCGGATGAAGGTCCAATCTCTACCAC
 ATCTATGAGGTGAACCTGGTCTCCGAGCACATCTGGTGTGAGGACTTCTGGTGAAGGACTTCTATCTGA
 AGAACCTGCAGACCAACGAGACGCGCACCGTGACGCAGTTCCTACTTCTGAGTTGGTATGACCGAGGAGT
 CCCTTCTCTCAAGGTCCCTCCTGGACTTCCGCAGAAAAGTAAACAAGTGTACAGGGGCGGTTCTTGT
 CCAATAATTGTTTCATTGCAGTGACGGTGCAGGCCGGAGCGGCACCTACGTCTGATCGACATGGTTCTCA
 ACAAGATGGCCAAAGGTGCTAAAGAGATTGATATCGCAGCGACCTGGAGCACTTGAGGGACCAGAGACC
 CGGCATGGTCCAGACGAAGGAGCAGTTTGGATTCCGCGTGACAGCCGTGGCTGAGGAGGTGAACGCCATC
 CTC AAGGCCCTTCCCG

AGCGGACCGACGCGTACGCGGCCGCTCGAGCAGAACTCATCTCAGAAGAGGATCTGGCAGCAAATGATATCC
 TGGATTACAAGGATGACGACGATAAGGTTTAA

Protein Sequence:

>RC205368 protein sequence
 Red=Cloning site Green=Tags(s)

MGPPPLLLLLLLLLPPRVLPAAPSSVPRGRQLPGRLGCLLEEGLCGASEACVNDGVFGRQKVPAMDFY
 RYEVSPVALQRLRVALQKLSGTGFTWQDDYTQYVMDQELADLPKTYLRRPEASSPARPSKHSVGSERRYS
 REGGAALANALRRHLPFLALSQAPASDVLARTHTAQDRPPAEGDDRFSESILTYVAHTSALTYPPGPRT
 QLRELLPRTLGLQPDELSPKVDSGVDRHHLMAAL SAYAAQRPPAPPGEGLPEQYLLRAPSRMPRLL
 APAAPQKWPSPLDSEDPSTGDGARIHTLLKDLQRQPAEVRGLSGLLDGMAELMAGLMQGVHDGVARG
 SPGRAALGESGEQADGPKATLRGDSFPDDGVQDDDDRLYQEVHRLSATLGGLLQDHGSRLLPALPFARP
 LDMERKSEHPSSL SSEEETAGVENVKSQTYSKDLLGQQPHSEPGAAAFGELQNMGPSPKEEQSLPAG
 AQEALSDGLQLEVQPSEEEARGYIVTDREVLGPAVTFKVSANVQNTTEDVEKATVDNKDKLEETSGLKI
 LQTVGSGSKLFLPPQAEQEDSTKFIALTLVSLACILGVLLASGLIYCLRHSSQHRLKEKLSGLGGDPG
 ADATAAYQELCRQRMATRPDRPEGPHTSRISVSSQFSDGPIPSARSASSWSEEPVQSNMDISTGH
 MILSYMEDHLKKNRLEKEWEALCAYQAEPNSSFVAQREENVPKNRSLAVLTYDHSRVLKAENSHSHD
 YINASPIMDHDPRNPAYIATQGPLPATVADFWMVWESGCVVIMLTPLAENGVRCYHYWPDEGSNLHY
 IYEVNLVSEHIWCEDFL VRSFYLNQLTNETRTVTQHFHLSWYDRGVPSSSRLLDFRRKVNKCYRGRSC
 PIIVHCSGDAGRSQTYVLDIMVLNMAKGAKEIDIAATLEHLRDRQPMVQTKQEFAL TAVAEVNAI
 LKALPQ

SGPTRTRPLEQKLI SEEDLAANDILDYKDDDDK V

Chromatograms:

https://cdn.origene.com/chromatograms/mk6798_e08.zip

Restriction Sites:

Sgfl-RsrII

Cloning Scheme:



ACCN: NM_130843

ORF Size: 2958 bp

OTI Disclaimer: The molecular sequence of this clone aligns with the gene accession number as a point of reference only. However, individual transcript sequences of the same gene can differ through naturally occurring variations (e.g. polymorphisms), each with its own valid existence. This clone is substantially in agreement with the reference, but a complete review of all prevailing variants is recommended prior to use. [More info](#)

OTI Annotation: This clone was engineered to express the complete ORF with an expression tag. Expression varies depending on the nature of the gene.

Components: The ORF clone is ion-exchange column purified and shipped in a 2D barcoded Matrix tube containing 10ug of transfection-ready, dried plasmid DNA (reconstitute with 100 ul of water).

- Reconstitution Method:
1. Centrifuge at 5,000xg for 5min.
 2. Carefully open the tube and add 100ul of sterile water to dissolve the DNA.
 3. Close the tube and incubate for 10 minutes at room temperature.
 4. Briefly vortex the tube and then do a quick spin (less than 5000xg) to concentrate the liquid at the bottom.
 5. Store the suspended plasmid at -20°C. The DNA is stable for at least one year from date of shipping when stored at -20°C.

RefSeq: [NM_130843.4](#)

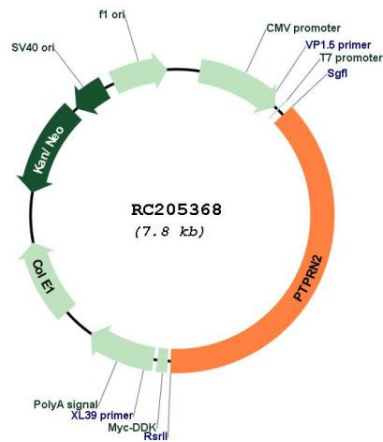
RefSeq Size: 4755 bp

RefSeq ORF: 2961 bp

Locus ID: 5799
UniProt ID: [Q92932](#)
Cytogenetics: 7q36.3
Domains: Y_phosphatase, PTPc_motif
Protein Families: Druggable Genome, Phosphatase
Protein Pathways: Type I diabetes mellitus
MW: 108.1 kDa

Gene Summary: This gene encodes a protein with sequence similarity to receptor-like protein tyrosine phosphatases. However, tyrosine phosphatase activity has not been experimentally validated for this protein. Studies of the rat ortholog suggest that the encoded protein may instead function as a phosphatidylinositol phosphatase with the ability to dephosphorylate phosphatidylinositol 3-phosphate and phosphatidylinositol 4,5-diphosphate, and this function may be involved in the regulation of insulin secretion. This protein has been identified as an autoantigen in insulin-dependent diabetes mellitus. Alternative splicing results in multiple transcript variants. [provided by RefSeq, Feb 2015]

Product images:



Circular map for RC205368