

Product datasheet for **RC205351**

HSPA1L (NM_005527) Human Tagged ORF Clone

Product data:

Product Type:	Expression Plasmids
Product Name:	HSPA1L (NM_005527) Human Tagged ORF Clone
Tag:	Myc-DDK
Symbol:	HSPA1L
Synonyms:	HSP70-1L; HSP70-HOM; HSP70T; hum70t
Mammalian Cell Selection:	Neomycin
Vector:	pCMV6-Entry (PS100001)
E. coli Selection:	Kanamycin (25 ug/mL)



[View online »](#)

**ORF Nucleotide
Sequence:**

>RC205351 ORF sequence
 Red=Cloning site Blue=ORF Green=Tags(s)

TTTTGTAATACGACTCACTATAGGGCGGCCGGAATTCGTCGACTGGATCCGGTACCGAGGAGATCTGCC
 GCC**GCGATCGCC**

ATGGCTACTGCCAAGGGAATCGCCATAGGCATCGACCTGGGCACCACCTACTCCTGTGTGGGGTGTTC
 AGCACGGCAAGGTGGAGATCATCGCAACGACAGGGCAACCGCACCCAGCTACGTGGCCTTCAC
 AGACACCGAGCGGCTCATTGGGGATGCGGCCAAGAACCAGGTAGCAATGAATCCCCAGAACACTGTTTT
 GATGCTAAACGTCTGATCGGCAGGAAATTAATGATCCTGTTGTACAAGCAGATATGAACTTTGGCCTT
 TTCAAGTGATTAATGAAGGAGGCAAGCCAAAGTCCTTGTCTCAAAAGGGGAGAATAAAGCTTTCTA
 CCCTGAGGAAATCTCTCGATGGTATTGACTAAGTTGAAGGAGACTGCTGAGGCCTTTTTGGCCACCT
 GTCACCAATGCAGTGATTACCGTCCAGCCTATTTCAATGACTCTCAACGTCAGGCTACTAAGGATGCAG
 GTGTGATTGCTGGACTTAATGTGCTAAGAATCATCAATGAGCCCACGGCTGCTGCCATTGCCTATGGTT
 AGATAAAGGAGGTCAAGGAGAACGACATGCTGATTTTTGATCTGGGTGGAGGCACATTTGATGTGCA
 ATTCTGACCATAGATGATGGGATTTTTGAGGTAAGGCCACTGCTGGGGACACTACCTGGTGGGGAGG
 ACTTTGACAACAGGCTTGTGAGCCACTTCGTGGAGGAGTTCAAGAGGAAACAAAAAGGACATCAGCCA
 GAACAAGCGAGCCGTGAGGCGGCTGCGCACCGCTGCGAGAGGGCCAAGAGGACCCTGCTGTCAGCACC
 CAGGCCAACCTAGAAATTGATCACTTTATGAAGGCATTGACTTCTATACATCCATCACCAGAGCTCGAT
 TTGAAGAGTTGTGTGCAGACCTGTTTAGGGGTACCCTGGAGCCTGTAGAAAAAGCGCTTCGGGATGCCAA
 GATGGATAAGGCTAAAATCCATGACATTGTTTTAGTAGGGGCTCCACCCGCATCCCCAAGTGCAGCGG
 CTGCTTCAGGACTACTTCAATGGACGTGATCTCAACAAGAGCATCAACCCTGATGAGGCCGTAGCATATG
 GGGCTGCGGTACAAGCAGCCATCCTGATGGGGACAAGTCTGAGAAGTACAGGACCTGCTGCTGCTGGA
 CGTGGCTCCCCTGTCCCTGGGGCTGGAGACGGCTGGGGCGTGATGACTGCCTTGATGAAGCGCAACTCC
 ACCATCCCACCAAGCAGACACAGATTTTCACCACCTACTCTGACAACCAACCCGGGGTGTGATCCAGG
 TGTATGAGGGCGAGAGGGCCATGACAAAGGACAACAACCTGCTGGGGCGGTTTGACTGACTGGAATCCC
 TCCAGCACCCAGGGGAGTTCCCTCAGATCGAGGTGACGTTTGACATTGATGCCAATGGTATTCTCAATGTC
 ACAGCCATGGACAAGAGCACCGCAAGGTGAACAAGATCACCATCGCAATGACAAGGGCCGCTGAGCA
 AGGAGGAGATTGAGCGCATGGTTCTGGATGCTGAGAAATATAAGCTGAAGATGAGGTCCAGAGGGAGAA
 AATTGCTGCAAAGAATGCCTTAGAATCCTATGCTTTTAAACATGAAGAGTGTGTGAGTGATGAAGGTTT
 AAGGGCAAGATTAGTGAGTCTGATAAAAAATAAATATTGGATAAATGCAACGAGCTCCTTCGTGGCTGG
 AGGTCAATCAACTGGCAGAGAAAGATGAGTTTATCATAAAGAGAAAGGAATTGGAGCAGATGTGTAACCC
 TATCATCACAACCTCTACCAAGGAGGATGCACTGGGCCTGCCTGCGGAACAGGGTATGTGCTGGAAGG
 CCTGCCACAGGCCCCACAATTGAAGAAGTAGAT

ACGCGTACGCGGCCGCTCGAGCAGAAACTCATCTCAGAAGAGGATCTGGCAGCAATGATATCCTGGATT
 ACAAGGATGACGACGATAAGGTTTAA

Protein Sequence: >RC205351 protein sequence
 Red=Cloning site Green=Tags(s)

MATAKGIAIGIDLGTTYSCVGVFQHGKVEIIANDQGNRTTPSYVAFTDTERLIGDAAKNQVAMNPQNTVF
 DAKRLIGRKFNDPVVQADMKLWPFQVINEGGKPKVLVSYKGENKAFYP EEISSMVLTKLKETA EAF LGHP
 VTNAVITVPAYFNDSQRQATKDAGVIAGLNLVRIINEPTAAAIAYGLDKGGQGERHVLIFDLGGGTFDVS
 ILTIDDGIFEVKATAGDTHLGGEDFDNRLVSHFVEEFKRKHKKDISQNKRAVRRRLTACERAKRTLSST
 QANLEIDSLYEGIDFYTSITRARFEELCADLFRGTLEPVEKALRDAKMDKAKIHDIVLVGGSTRIPKVQR
 LLQDYFNDRDLNKSINPDEAVAYGAAVQAAILMGDKSEKVDLLLLDVAPLSLGLTAGGVM TALMKRNS
 TIPTKQTQIFTTYSDNPGVLIQVYEGERAMTKDNNLLGRFDLTGIPPAPRGVPQIEVTFDIDANGILNV
 TAMDKSTGKVNKITIANDKGRLSKEEIERMVLDAEKYKAEDVQREKIAAKNALESYAFNMKSVVSDEGL
 KGKISESDKNKILDKCNELL SWLEVNQLAEKDEFDHKRKELEQMCNPIITKLYQGGCTGPACGTGYVPGR
 PATGPTIEEVD

TRTRPLEQKLISEEDLAANDILDYKDDDDKV

Chromatograms: https://cdn.origene.com/chromatograms/mk6027_g09.zip

Restriction Sites: SgfI-MluI

Cloning Scheme:



ACCN: NM_005527

ORF Size: 1923 bp

OTI Disclaimer: Due to the inherent nature of this plasmid, standard methods to replicate additional amounts of DNA in E. coli are highly likely to result in mutations and/or rearrangements. Therefore, OriGene does not guarantee the capability to replicate this plasmid DNA. Additional amounts of DNA can be purchased from OriGene with batch-specific, full-sequence verification at a reduced cost. Please contact our customer care team at custsupport@origene.com or by calling 301.340.3188 option 3 for pricing and delivery.

The molecular sequence of this clone aligns with the gene accession number as a point of reference only. However, individual transcript sequences of the same gene can differ through naturally occurring variations (e.g. polymorphisms), each with its own valid existence. This clone is substantially in agreement with the reference, but a complete review of all prevailing variants is recommended prior to use. [More info](#)

OTI Annotation: This clone was engineered to express the complete ORF with an expression tag. Expression varies depending on the nature of the gene.

Components: The ORF clone is ion-exchange column purified and shipped in a 2D barcoded Matrix tube containing 10ug of transfection-ready, dried plasmid DNA (reconstitute with 100 ul of water).

Reconstitution Method:

1. Centrifuge at 5,000xg for 5min.
2. Carefully open the tube and add 100ul of sterile water to dissolve the DNA.
3. Close the tube and incubate for 10 minutes at room temperature.
4. Briefly vortex the tube and then do a quick spin (less than 5000xg) to concentrate the liquid at the bottom.
5. Store the suspended plasmid at -20°C. The DNA is stable for at least one year from date of shipping when stored at -20°C.

RefSeq: [NM_005527.4](#)

RefSeq Size: 2550 bp

RefSeq ORF: 1926 bp

Locus ID: 3305

UniProt ID: [P34931](#)

Cytogenetics: 6p21.33

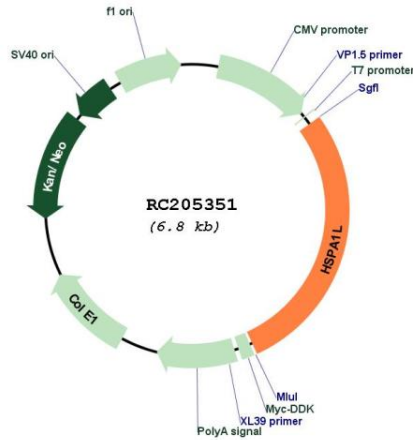
Domains: HSP70

Protein Pathways: Antigen processing and presentation, Endocytosis, MAPK signaling pathway, Spliceosome

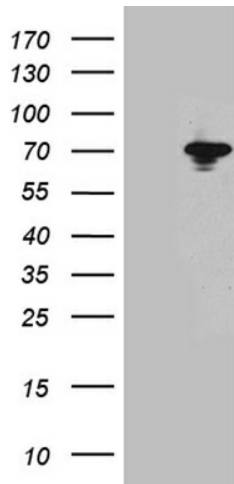
MW: 70.4 kDa

Gene Summary: This gene encodes a 70kDa heat shock protein. In conjunction with other heat shock proteins, this protein stabilizes existing proteins against aggregation and mediates the folding of newly translated proteins in the cytosol and in organelles. The gene is located in the major histocompatibility complex class III region, in a cluster with two closely related genes which also encode isoforms of the 70kDa heat shock protein. [provided by RefSeq, Jul 2008]

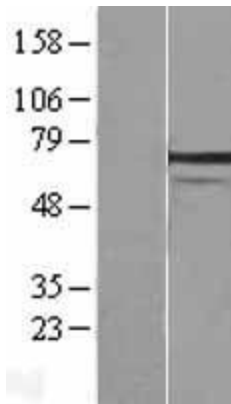
Product images:



Circular map for RC205351



HEK293T cells were transfected with the pCMV6-ENTRY control (Cat# [PS100001], Left lane) or pCMV6-ENTRY HSPA1L (Cat# RC205351, Right lane) cDNA for 48 hrs and lysed. Equivalent amounts of cell lysates (5 ug per lane) were separated by SDS-PAGE and immunoblotted with anti-HSPA1L antibody (Cat# [TA812115]). Positive lysates [LY417244] (100ug) and [LC417244] (20ug) can be purchased separately from OriGene.



Western blot validation of overexpression lysate (Cat# [LY417244]) using anti-DDK antibody (Cat# [TA50011-100]). Left: Cell lysates from untransfected HEK293T cells; Right: Cell lysates from HEK293T cells transfected with RC205351 using transfection reagent MegaTran 2.0 (Cat# [TT210002]).