

Product datasheet for **RC205345**

SV2B (NM_014848) Human Tagged ORF Clone

Product data:

Product Type:	Expression Plasmids
Product Name:	SV2B (NM_014848) Human Tagged ORF Clone
Tag:	Myc-DDK
Symbol:	SV2B
Synonyms:	HsT19680
Mammalian Cell Selection:	Neomycin
Vector:	pCMV6-Entry (PS100001)
E. coli Selection:	Kanamycin (25 ug/mL)



[View online »](#)

ORF Nucleotide
Sequence:

>RC205345 ORF sequence
Red=Cloning site Blue=ORF Green=Tags(s)

TTTTGTAATACGACTCACTATAGGGCGGCCGGAATTCGTCGACTGGATCCGGTACCGAGGAGATCTGCC
GCCGCGATCGCC

ATGGATGACTACAAGTATCAGGACAATTATGGGGCTATGCTCCCAGTGATGGCTATTACCGCGCAATG
AGTCCAACCCAGAAGAAGATGCACAGAGTGATGTCACCGAAGGCCATGATGAGGAAGACGAGATCTATGA
GGCGAGTACCAGGGTATCCCTCACCCAGATGATGTCAGGCCAAGCAGGCCAAGATGGCCCTCCAGA
ATGGACAGCCTTCGGGGCCAGACAGACCTGATGGCTGAGAGGCTGGAAGATGAGGAGCAGTTGGCCATC
AGTACGAGACCATCATGGATGAGTGTGGCCATGGCCGCTTCCAGTGGATCCTCTTTTTCTGCTTGGGTTT
GGCCCTGATGGCCGATGGGGTGAAGTGTTCGTGGTGAGTTTTGCCCTGCCAGTGCAGAGAAGGACATG
TGTCTGTCCAGTCCAAAAAGGAATGCTAGGGATGATAGTCTACTTGGGAATGATGGCGGGCGCCTTCA
TCCTGGGAGGCCGCTGGCTGATAAGCTGGGAAGGAAGCGAGTCTCAGCATGTCTCTGGCCGTCATGCCTC
CTTCGCCTCCCTCTCTTCTTCTGTCAGGGATATGGAGCCTTCTCTTCTGCCGACTCATCTCAGGCATC
GGTATTGGGGTGTCTCTACCGATTGTTTTGCCTATTTTTCTGAATTCCTGTCTCGGGAGAAGCGAGGAG
AACACCTCAGTTGGCTGGGCATCTTCTGGATGACTGGGGCCTGTACGCATCTGCCATGGCCTGGAGCAT
CATCCCACACTATGGCTGGGGCTTACAGCATGGGGACCAATTACCACTTCCATAGCTGGAGAGTGTGTC
ATCGTCTGTGCTCTGCCCTGCACCGTGTCCATGGTGGCCCTGAAGTTCATGCCAGAGAGCCCAAGTTTC
TGCTAGAGATGGGCAAACATGATGAAGCCTGGATGATTCTCAAGCAAGTCCATGACACCAACATGAGAGC
TAAGGGGACCCAGAGAAAGTGTTCACGGTTTCCAACATCAAACTCCCAAGCAAATGGATGAATTCATT
GAGATCCAAAGTCAACAGGAACCTGGTACCAGCGCTGGCTGGTCAAGATTCAAGACCATTTTCAAGCAGG
TCTGGGATAATGCCCTGTACTGTGTGATGGGGCCCTACAGAATGAATACTGATTCTGGCCGTGGTTTG
GTTTGCCATGGCATTAGTTACTATGGACTGACAGTTTGGTTTCCCTGATGATGATCCGCTATTTTCAAGAT
GAAGAATACAAGTCTAAAATGAAGTGTTTTTGGTGAGCATGTGTACGGCGCCACAATCAACTTACGA
TGGAAAATCAGATCCACCAACATGGGAACTTGTGAATGATAAGTTCACAAGAATGTACTTTAAACATGT
ACTCTTTGAGGACACATTCTTTGACGAGTGCTATTTTGAAGACGTAACATCAACAGATACCTACTTCAAA
AATTGTACCATTGAATCAACCATCTTTTACAACACAGACCTCTACGAGCACAAGTTCATCAACTGTCGGT
TTATCAACTCCACCTTCTGGAGCAGAAGGAGGGCTGCCACATGGACTTGGAGCAAGATAATGACTTCT
GATTTACCTCGTCAGCTTCTGGGCAGCCTGTCTGTCTTACCCGGGAACATCATTTCTGCCCTGCTCATG
GATAGAATTGGAAGGCTCAAGATGATTGGTGGCTCCATGCTAATCTCTGCAGTCTGCTGCTTCTTCTGT
TTTTTGGCAACAGTGAGTCTGCAATGATCGGCTGGCAGTCCCTGTCTGTGGGACAAGCATTGCAGCCTG
GAATGCTCTGGATGTGATCACAGTGGAGCTGTATCCCACCAACCAGAGAGCAACAGCCTTCGGCATTCTC
AATGGATTATGCAAAATTTGGCGCCATCCTGGGAAACACCATCTTTGCTTCTTTTGGGATAACCAAAG
TGGTCCCACCTTCTGGCTGCTGCTTCTGTTGGGGTGGCCTGATTGCCCTTCGACTGCCAGAGAC
TCGAGAACAGGTCTGATG

ACGCGTACGCGGCCGCTCGAGCAGAACTCATCTCAGAAGAGGATCTGGCAGCAAATGATATCCTGGATT
ACAAGGATGACGACGATAAGGTTTAA

Protein Sequence: >RC205345 protein sequence
Red=Cloning site Green=Tags(s)

MDDYKYQDNYGGYAPSDGYRRGNESNPEEDAQSDVTEGHDEEDEIYEGEYQGIPHPDDVKAKQAKMAPSR
MDSL RQQTDLMAERLEDEEQLAHQYETIMDECGHGRFQWILFFVLGLALMADGVEFVVSFALPSAEKDM
CLSSSSKKGMLGMIVYLGMMAGAFILGGLADKLGRKRVLMSLAVNASFASLSSFVQGYGAF LFCRLISGI
GIGGALPIVFAYFSEFLSREKRGEHL SWLGIFWMTGGLYASAMAWSIIPHYGWGF SMGTNYHFHSWRV FV
IVCALPCTVSMVALKFMPE SPRFLLEMKGHDEAWMILKQVHDTNMRAGTPEKVF TVSNIKTPKQ MDEFI
EIQSSTGTWYQRWLVRFKTIFKQVWDNALYCVMGPYRMNTLILAVVWFAMAFSYYGLTVWFPMIRYFQD
EEYKSKMKVFFGEHVYGATINFTMENQIHQHGKLVNDKFTRMYFKHVL FEDTFFDECYFEDVTSTDTYFK
NCTIESTIFYNTDLYEHKF INCRFINSTFLEQKEGCHMDLEQDNDFLIYLVSFLGSLSVLP GNIISALLM
DRIGRLKMIIGSMLISAVCCFFLFFGNSESAMIGWQCLFCGTSIAAWNALDVITVELYPTNQRATAFGIL
NGLCKFGAILGNTIFASVFGITKVVPI LLAASLVGGGLIALRLPETREQVLM

TRTRPLEQKLISEEDLAANDILDYKDDDDKV

Chromatograms: https://cdn.origene.com/chromatograms/mk6139_h06.zip

Restriction Sites: SgfI-MluI

Cloning Scheme:



ACCN: NM_014848

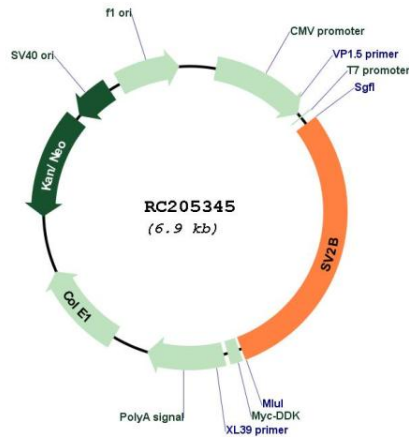
ORF Size: 2049 bp

OTI Disclaimer: The molecular sequence of this clone aligns with the gene accession number as a point of reference only. However, individual transcript sequences of the same gene can differ through naturally occurring variations (e.g. polymorphisms), each with its own valid existence. This clone is substantially in agreement with the reference, but a complete review of all prevailing variants is recommended prior to use. [More info](#)

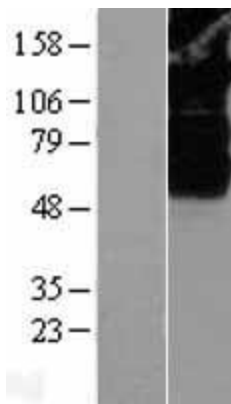
OTI Annotation: This clone was engineered to express the complete ORF with an expression tag. Expression varies depending on the nature of the gene.

Components:	The ORF clone is ion-exchange column purified and shipped in a 2D barcoded Matrix tube containing 10ug of transfection-ready, dried plasmid DNA (reconstitute with 100 ul of water).
Reconstitution Method:	<ol style="list-style-type: none">1. Centrifuge at 5,000xg for 5min.2. Carefully open the tube and add 100ul of sterile water to dissolve the DNA.3. Close the tube and incubate for 10 minutes at room temperature.4. Briefly vortex the tube and then do a quick spin (less than 5000xg) to concentrate the liquid at the bottom.5. Store the suspended plasmid at -20°C. The DNA is stable for at least one year from date of shipping when stored at -20°C.
RefSeq:	NM_014848.2
RefSeq Size:	11361 bp
RefSeq ORF:	2052 bp
Locus ID:	9899
UniProt ID:	Q7L1I2
Cytogenetics:	15q26.1
Domains:	sugar_tr
Protein Families:	Secreted Protein, Transmembrane
Protein Pathways:	ECM-receptor interaction
MW:	77.4 kDa
Gene Summary:	This gene encodes a member of the synaptic vesicle proteins 2 (SV2) family and major facilitator superfamily of proteins. This protein and other members of the family are localized to synaptic vesicles and may function in the regulation of vesicle trafficking and exocytosis. Studies in mice suggest that the encoded protein may act as a protein receptor for botulinum neurotoxin E in neurons, and that this protein may be important for the integrity of the glomerular filtration barrier. This gene shows reduced expression in areas of synaptic loss in the hippocampus of human temporal lobe epilepsy patients. [provided by RefSeq, Sep 2016]

Product images:



Circular map for RC205345



Western blot validation of overexpression lysate (Cat# [LY402380]) using anti-DDK antibody (Cat# [TA50011-100]). Left: Cell lysates from untransfected HEK293T cells; Right: Cell lysates from HEK293T cells transfected with RC205345 using transfection reagent MegaTran 2.0 (Cat# [TT210002]).