

Product datasheet for RC205344

LAMP3 (NM_014398) Human Tagged ORF Clone

Product data:

Product Type:	Expression Plasmids
Product Name:	LAMP3 (NM_014398) Human Tagged ORF Clone
Tag:	Myc-DDK
Symbol:	LAMP3
Synonyms:	CD208; DC-LAMP; DC LAMP; DCLAMP; LAMP; LAMP-3; TSC403
Mammalian Cell Selection:	Neomycin
Vector:	pCMV6-Entry (PS100001)
E. coli Selection:	Kanamycin (25 ug/mL)
ORF Nucleotide Sequence:	>RC205344 ORF sequence Red=Cloning site Blue=ORF Green=Tags(s)

TTTTGTAATACGACTCACTATAGGGCGGCCGGGAATTCGTCGACTGGATCCGGTACCGAGGAGATCTGCCGCCGCGATCGCC

ATGCCCGGCAGCTCAGCGCGGCCGCGCTCTTCGCGTCCCTGGCCGTAATTTTGCACGATGGCAGTCAAAAGCATAAAGCATTTCAGGAACCAAGAGATTATCTCAACCTACTGCAGCAGCAACAGTACAGGACATAAAAAACCTGTCCAGCAACCAGCTAAGCAAGCACCTACCAAACTTAGCAGCAAGATTCATGGATGGTCATATCACCTTTCAAACAGCGGCCACAGTAAAAATCCAACAACACCCAGCAACTACAAAAACACTGCAACCACCAGCCCAATTACCTACACCCTGGTCACAACCCAGGCCACACCAACAACCTCACACACAGCTCCTCCAGTTACTGAAGTTACAGTCGGCCCTAGCTTAGCCCTTATTCACTGCCACCCACCATCACCCCAAGCTCATACAACCTGGAACCAAGTTCATCAACCGTCAGCCACACAACCTGGGAACACCACTCAACCCAGTACCAGACCACCTTCCAGCAACTTATCGATAGCACTGCACAAAAGCACAAACCGGTGAGAAGCCTGTTCAACCCACCATGCCCCAGGAACAACGGCAGCTGCCACAATACCACCCGCACAGCTGCACCTGCCTCCACGGTTCCTGGGCCACCTTGACCTCAGCCATCGTCAGTCAAGACTGGAATTTATCAGTTCTAAACGGAAACGAGACTCTGTATAAAGCAGAGATGGGATACAGCTGATTGTTCAAGACAAGGAGTCGGTTTTTACCCTCGGAGATACTTCAACATCGACCCCAACGCAACGCAAGCCTCTGGAACTGTGGCACCCGAAAATCCAACCTTCTGTTGAATTTTTCAGGGCGGATTTGTGAATCTCACATTTACCAAGGATGAAGAATCATATTATATGTTAAGTGGGAGCCTATTTGACCGTCTCAGATCCAGAGACAGTTTACCAAGGAATCAAACATGCGGTGGTGATGTTCCAGACAGCAGTCGGGCATTCTTCAAGTGCCTGAGTGAACAGAGCCTCCAGTTGTCAGCCACCTGCAGGTGAAAACAACCGATGTCCAACCTCAAGCCTTTGATTTGAAGATGACCACTTTGGAAATGTGGATGAGTGCCTGCTGACTACACAATTGTGCTTCTGTGATTGGGGCCATCGTGGTTGGTCTCTGCCTTATGGGTATGGGTGTCTATAAAATCCGCTAAGGTGTCAATCATCTGGATACCAGAGAATC

ACGCGTACGCGGCCGCTCGAGCAGAACTCATCTCAGAAGAGGATCTGGCAGCAATGATATCCTGGATTACAAGGATGACGACGATAAGGTTTAA



[View online >](#)

Protein Sequence: >RC205344 protein sequence
Red=Cloning site Green=Tags(s)

MPRQLSAAAALFASLAVILHDGSMRAKAFPGTRDYSQPTAAATVQDIKPKVQPAKQAPHQTLAARFMD
 GHITFQTAATVKIPTTTTPATTKNTATTSPITYTLVTTQATPNNSHTAPPVTEVTVGPSLAPYSLPPTITP
 PAHTTGTSSSTVSHHTGNTTQPSNQTTLPATLSIALHKSTTGQKPVQPTHAPGTTAAAHNTTRTAAPAST
 VPGPTLAPQPSSVKTGIYQVLNGSRLCIKAEMGIQLIVQDKESVFSPPRYFNIDPNATQASGNCGTRKSN
 LLLNFQGGFVNLTFKDEESYYISEVGAYLTVSDPETVYQGIKHAVVMFQTAVGHFSKCVSEQLQLSAH
 LQVKTTDVQLQAFDFEDDFHGNVDECSSDYTIVLPVIGAIVVGLCLMGMGVYKIRLRCQSSGYQRI

TRTRPLEQKLISEEDLAANDILDYKDDDDKV

Chromatograms: https://cdn.origene.com/chromatograms/mk6028_g02.zip

Restriction Sites: SgfI-MluI

Cloning Scheme:



* The last codon before the Stop codon of the ORF

ACCN: NM_014398

ORF Size: 1248 bp

OTI Disclaimer: The molecular sequence of this clone aligns with the gene accession number as a point of reference only. However, individual transcript sequences of the same gene can differ through naturally occurring variations (e.g. polymorphisms), each with its own valid existence. This clone is substantially in agreement with the reference, but a complete review of all prevailing variants is recommended prior to use. [More info](#)

OTI Annotation: This clone was engineered to express the complete ORF with an expression tag. Expression varies depending on the nature of the gene.

Components: The ORF clone is ion-exchange column purified and shipped in a 2D barcoded Matrix tube containing 10ug of transfection-ready, dried plasmid DNA (reconstitute with 100 ul of water).

Reconstitution Method:

1. Centrifuge at 5,000xg for 5min.
2. Carefully open the tube and add 100ul of sterile water to dissolve the DNA.
3. Close the tube and incubate for 10 minutes at room temperature.
4. Briefly vortex the tube and then do a quick spin (less than 5000xg) to concentrate the liquid at the bottom.
5. Store the suspended plasmid at -20°C. The DNA is stable for at least one year from date of shipping when stored at -20°C.

RefSeq: [NM_014398.4](#)

RefSeq Size: 3341 bp

RefSeq ORF: 1251 bp

Locus ID: 27074

UniProt ID: [Q9UQV4](#)

Cytogenetics: 3q27.1

Domains: Lamp

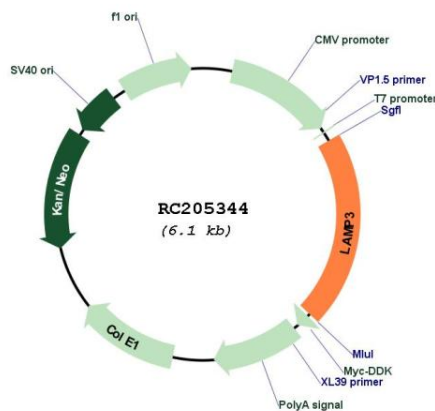
Protein Families: Transmembrane

Protein Pathways: Lysosome

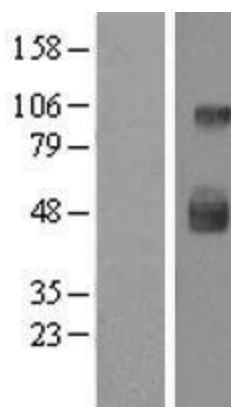
MW: 44.3 kDa

Gene Summary: Dendritic cells (DCs) are the most potent antigen-presenting cells. Immature DCs efficiently capture antigens and differentiate into interdigitating dendritic cells (IDCs) in lymphoid tissues that induce primary T-cell responses (summary by de Saint-Vis et al., 1998 [PubMed 9768752]).[supplied by OMIM, Dec 2010]

Product images:



Circular map for RC205344



Western blot validation of overexpression lysate (Cat# [LY402328]) using anti-DDK antibody (Cat# [TA50011-100]). Left: Cell lysates from untransfected HEK293T cells; Right: Cell lysates from HEK293T cells transfected with RC205344 using transfection reagent MegaTran 2.0 (Cat# [TT210002]).