

Product datasheet for **RC205336**

CORO2B (NM_006091) Human Tagged ORF Clone

Product data:

Product Type:	Expression Plasmids
Product Name:	CORO2B (NM_006091) Human Tagged ORF Clone
Tag:	Myc-DDK
Symbol:	CORO2B
Synonyms:	CLIPINC
Mammalian Cell Selection:	Neomycin
Vector:	pCMV6-Entry (PS100001)
E. coli Selection:	Kanamycin (25 ug/mL)



[View online »](#)

ORF Nucleotide Sequence:

>RC205336 ORF sequence
 Red=Cloning site Blue=ORF Green=Tags(s)

TTTTGTAATACGACTCACTATAGGGCGGCCGGAATTCGTCGACTGGATCCGGTACCGAGGAGATCTGCC
 GCC**GCGATCGCC**

ATGTCCTGGCGTCCGCAATACCGTAGTCCAAGTTCGGAATGTCTACGGGAAGGTGCCAACCGGGAGC
 ACTGCTTCGATGGGATCCCCATACCAAGAATGTGCACGACAACCACTTCTGTGCCGTCAACACCCGCTT
 CCTGGCCATCGTCACCGAGAGCGCAGGGGGCGGCTCCTTCTCGTCATCCCCCTGGAGCAGACAGGCAGG
 ATTGAACCAACTACCCCAAGGTCTGCGGCCACAGGGCAATGTGCTGGATATCAATGGAACCCCTTCA
 TCGACAACATCATTGCCTCGTCTCGGAGGACACGTGGTGGGATCTGGGAGATCCCCGAGGGCGGGCT
 GAAGCGGAACATGACGGAGGCGCTCTGGAGCTGCACGGGCACAGCCGGCGTGTGGGGCTGGTGGAGTGG
 CACCCACCAACAACATCCTGTTCAAGCTGGCTACGACTACAAGTCTCATCTGGAACCTGGATG
 TGGGTGAGCCGGTGAAGATGATTGACTGCCACACGGATGTGATCCTCTGCATGTCCTTCAACACGGACGG
 CAGCCTGCTCACCACCAGTGAAGGACAAGAAGCTGCGTGTGATTGAGCCCCGCTCTGGCCGTGTTCTG
 CAGGAGGCCAACTGCAAAAACCACAGAGTGAACCGGGTGGTGTCTCTGGGGAACATGAAGCGGCTCGTCA
 CGACAGGGGTCTCCAGGTGGAACACAAGACAGATTGCCCTCTGGGACCAGGAGGACCTCTCTATGCCCT
 GATCGAAGAGGAAATTGATGGGCTCTCTGGCTCCTGTTCCCTTCTATGATGCTGACACCCACATGCTC
 TACCTGGCTGGAAGGGTATGGAACATCCGGTACTACGAGATCAGCACTGAGAAGCCCTACCTGAGTT
 ACCTCATGGAGTTCGGCTCCCCAGCCCCGAGAAAGGCCTAGGGGTATGCCCAAGCAGGGGCTGGATGT
 GTCAGCCTGCGAGGTGTTCCGCTTCTACAAGCTGGTACTCTCAAGGGCTGATCGAGCCATCTCCATG
 ATCGTCCCCGGAGGTGATTCCTACCAGGAAGACATTTACCAATGACACCAGGCACGGAGCCAGCAC
 TGACCCCGGATGAATGGCTGGGAGGCATCAACCGAGATCCCGTGTGATGCTTTTGAAGAAGGCTATAA
 GAAGTCTCAAAAATGGTATTTAAGGCTCCCATCAAAGAAAAGAAGAGTGTGTGGTCAACGGAATAGAT
 TTATTAGAAAATGTCCACCCAGGACAGAGAATGAGCTCCTTCAATGTTCTTCCGGCAGCAGGATGAGA
 TTCGACGGTTGAAAGAGGAGCTGGCCAGAAGGACATCCGCATTCGGCAGCTCCAGCTGGAAGTAAAAA
 CTTGCGCAACAGCCCAAGAAGTGT

ACGCGTACGCGGCCGCTCGAGCAGAACTCATCTCAGAAGAGGATCTGGCAGCAAATGATATCTGGATT
 ACAAGGATGACGACGATAAGGTTTAA

Protein Sequence:

>RC205336 protein sequence
 Red=Cloning site Green=Tags(s)

MSWRPQYRSSKFRNVYGVANREHCFDGIPIITKNVHDNHFCVNTFLAIVTESAGGGSFLVIPLEQTGR
 IEPNYPKVCGHQGNVLDIKWNPFDNIIASCS EDTSVRIWEIPEGGLKRNMTALLELHGHSRRVGLVEW
 HPTTNNILFSAGYDYKVL IWNLDVGEVPMIDCHTDVILCMSFN TDGSLT TTTCKDKLRVIEPRSGRVL
 QEANCKNHRVNRVFLGNMKRLVTTGVS RWNTRQIALWDQEDLSMPLIEEIDGLSGLLFPFYDADTHML
 YLAGKGDGNIRYYEISTEKPYLSYLMEFRSPAPQKGLGVMPKHGLDVSACEVFRFYKLVTLKGLIEPISM
 IVPRRSDSYQEDIYPMTPGTEPALTPDEWLGGINRDPVLM SLKEGYKSSKMVFKAPIKEKKS VVVNGID
 LLENVPPRTENELLRMFFRQDEIRRLKEELAQKDIRIRLQLLELKNLRNSPKNC

TRTRPLEQKLI SEEDLAANDILDYKDDDDKV

Chromatograms:

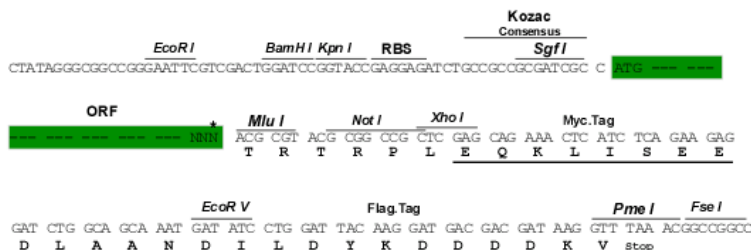
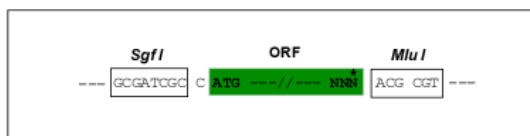
https://cdn.origene.com/chromatograms/mk6537_d08.zip

Restriction Sites:

Sgfl-Mlul

Cloning Scheme:

Cloning sites used for ORF Shutting:



* The last codon before the Stop codon of the ORF

ACCN: NM_006091

ORF Size: 1425 bp

OTI Disclaimer: The molecular sequence of this clone aligns with the gene accession number as a point of reference only. However, individual transcript sequences of the same gene can differ through naturally occurring variations (e.g. polymorphisms), each with its own valid existence. This clone is substantially in agreement with the reference, but a complete review of all prevailing variants is recommended prior to use. [More info](#)

OTI Annotation: This clone was engineered to express the complete ORF with an expression tag. Expression varies depending on the nature of the gene.

Components: The ORF clone is ion-exchange column purified and shipped in a 2D barcoded Matrix tube containing 10ug of transfection-ready, dried plasmid DNA (reconstitute with 100 ul of water).

Reconstitution Method:

1. Centrifuge at 5,000xg for 5min.
2. Carefully open the tube and add 100ul of sterile water to dissolve the DNA.
3. Close the tube and incubate for 10 minutes at room temperature.
4. Briefly vortex the tube and then do a quick spin (less than 5000xg) to concentrate the liquid at the bottom.
5. Store the suspended plasmid at -20°C. The DNA is stable for at least one year from date of shipping when stored at -20°C.

RefSeq: [NM_006091.1](#), [NP_006082.1](#)
RefSeq Size: 3578 bp

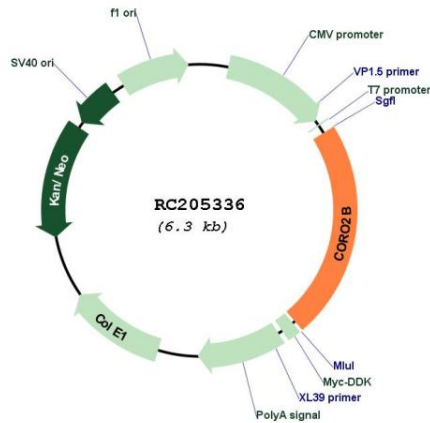
RefSeq ORF: 1443 bp

Locus ID: 10391

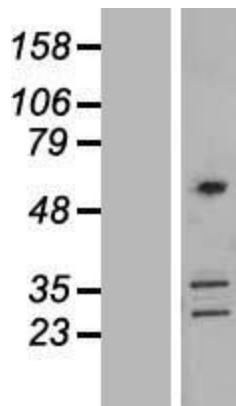
UniProt ID: [Q9UQ03](#)
Cytogenetics: 15q23

Domains: WD40
MW: 54.4 kDa
Gene Summary: May play a role in the reorganization of neuronal actin structure.[UniProtKB/Swiss-Prot Function]

Product images:



Circular map for RC205336



Western blot validation of overexpression lysate (Cat# [LY416869]) using anti-DDK antibody (Cat# [TA50011-100]). Left: Cell lysates from untransfected HEK293T cells; Right: Cell lysates from HEK293T cells transfected with RC205336 using transfection reagent MegaTran 2.0 (Cat# [TT210002]).