

## Product datasheet for **RC205334**

### **PIGN (NM\_176787) Human Tagged ORF Clone**

#### **Product data:**

Product Type:	Expression Plasmids
Product Name:	PIGN (NM_176787) Human Tagged ORF Clone
Tag:	Myc-DDK
Symbol:	PIGN
Synonyms:	MCAHS; MCAHS1; MCD4; MDC4; PIG-N
Mammalian Cell Selection:	Neomycin
Vector:	pCMV6-Entry (PS100001)
E. coli Selection:	Kanamycin (25 ug/mL)



[View online »](#)

**ORF Nucleotide Sequence:**

>RC205334 ORF sequence  
 Red=Cloning site Blue=ORF Green=Tags(s)

TTTTGTAATACGACTCACTATAGGGCGGCCGGGAATTCGTCGACTGGATCCGGTACCGAGGAGATCTGCC  
 GCC**CGGATCGCC**

ATGCTGCTGTTCTTTACTTTGGGATTGCTTATACATTTTGTGTTCTTCGCCTCCATCTTTGACATTTATT  
 TTACATCTCCTTTGGTTCATGGAATGACTCCTCAGTTTACACCATTGCCTCCTCCAGCGAGAAGATTAGT  
 GTTGTGTTGTTGCTGATGGCCTTCGAGCAGATGCACTTTACGAATTAGATGAAAATGGAACTCTAGAGCA  
 CCGTTTATTAGGAATATCATAATGCATGAAGGCAGCTGGGGCATACTCATAACAGTGTGCCAACAGAAT  
 CTCGGCCAGGTGATGTAGCTCTGATAGCTGGGTTTTATGAAGATGTCAGTGCAGTTGCCAAAGGATGGAA  
 GGAAAATCCTGTAGAGTTTGATTCTCTTTTTAATGAAAGTAAATACACATGGAGCTGGGGAAAGCCAGAT  
 ATCCTGCCTATGTTTGCCAAAGGTGCTAGTGGAGACCAGTTTATACATATAGTTATGATGCTAAAAGAG  
 AGGATTTTGGTGTCAAGATGCAACAAAAGTGGATACGTGGGTTTTGATAATGTTAAGGACTTCTTTCA  
 TCATGCCAGAAAACACCAGTCTTTGTTTTCTAAAATAAATGAAGAGAAAATAGTTTTTTTCTTACATTTA  
 TTAGGAATAGATACAAACGGACATGCTCATCGACCATCCTCGAGAGACTACAAGGACAATATTA AAAAAG  
 TTGATGATGGAGTTAAAGAAATCGTGTCTATGTTTAAACATTTCTATGGAATGATGGGAAAACAACATT  
 TATCTTTACCTCTGACCATGGAATGACAGACTGGGGTTCCCATGGGGCTGGTCACTCCTTCAGAGACTTTA  
 ACTCCTTTAGTCACTTGGGGAGCTGGAATCAAGTATCCCAAAGAGTATCAGCTCAGCAATTTGATGATG  
 CATTTTTGAAAGAGTGGAGATTGGAGAATTGGAAGAGGCTAGATGTCAATCAGGCTGATATTGCACCATT  
 GATGACTTCCCTTATTGGAGTCCCTTTCTCTTAACTCAGTGGGAATCCTTCTGTGGATTATCTTAAC  
 AACACTGATCTCTTCAAAGCAGAGAGCATGTTTACAAATGCAGTACAGATTCTTGAACAGTTCAAGTGGA  
 AAATGACTCAGAAGAAAGAAAGTTACTTTACCATTTTTGTTTACACCATTTAAACTGCTTTGATTCCAA  
 ACAGTTCAACATTTTAAAGAAAAGCAAGATCTTATATAAAACACAGAAAAGTTTGATGAAGTGGTCTCCCTT  
 TGCAAGGAGCTAATTCATCTTGCAATTGAAAGGATTGCTCTATTATCACACATATGACAGATTCTTTTTGG  
 GCGTCAATGTTGTTATTGGTTTTGTGGGATGGATATCTTATGCCTCTTTGTTGATCATCAAGTCTCATT  
 CAACCTTATAAAAGGTGTTAGTAAAGAAGTGAAGAAACCAAGCCATCTCCTGCCTGTAGTTTTGTAGCT  
 ATTGGCATTTTAGTAGCATTTTTCTGCTGATTCAAGCCTGTCCCTGGACATATTATGTATATGGTTTTGT  
 TGCCACTGCCAATATGGTATGCGGTTCTAAGAGAATTTCAAGTATTTCAGGACCTGTTGTATCAGTGT  
 GACCTATCCTCTGAGCCATTTTGTGGTACCTGTTAGCCTTTACCCTGGGAATTGAAGTATTAGTTCTC  
 AGTTTTTTCTACCGCTATATGCTTACCGCTGGACTTACTGCCTTTCAGCTTGGCCATTTCTCACTCGGC  
 TGTGGACTCGAGCAAAGATGACCTCACTGAGTTGGACTTCTTCTCTTTGCTCCTGGCAGTGTCCCACT  
 GATGCCGTTGTAGGTCGAAAGCCAGACATCTCTAGTGTGGTGCAGGCTTGCTGGTCTTCTGTTA  
 TCCTGTGTGTTGTAACATCTCTCATGAAAAGAAAAGTAGCTTTATAAAGGAAGAGCTATTGGTACATC  
 TGTTACAGGTGCTGAGCAGAGTCTCCATGTATGTTGTGATAGCACTCAGAGTAGTCTACTCAGGAA  
 GCAAGGACTGCCTCTCATGAATCAAATTATTAGCTGGGCAACATTAGCCTCTTCTTGGTTGTGCCACTA  
 CTGAGTTCTCCAGTCTCTTTCCAGGATTGTTCCAGCATACTTCTTTCATTGATGTCAACCTACCTACTTC  
 TAAGCACAGGGTATGAAGCTCTCTTTCCACTAGTGTGCTTGTGTTGATGTTGTCTGGATAAACATAGA  
 ACAAGAAACTCTACAACAATCTGGTGTGTTGCTGTAACAAAAGCTCACCAGTATCCAGTTCTCTTATAAT  
 ACTGATATAACTCAGTTTCGACAGCTATATCTGGATGACATCCGTAGGGCCTTTTTCTTGTGTTTTCTCT  
 TAGTGACAGCATTTTTGGAAGTGGAAATATAGCTTCTATTAACAGCTTTGATCTTGCTCTGTCTATTG  
 CTTTCTGACTGTGTTGAGTCTTTTATGATGGGAGCCCTGATGATGTGGAAGATTTTAAATCCCTTTGTT  
 CTTGTTATGTGTGCTTTTGAAGCAGTTCAGTTGACTACTCAGTTATCGTCAAAAAGCCTTTTTCTCATTG  
 TTCTCGTCATATCAGACATTATGGCTTTCAGTTTTTCTTCTTGGTCAAGGATTATGGCAGCTGGCTTGA  
 TATTGGGACAAGCATCAGCCACTATGTGATTGTCATGTCCATGACCATCTTTTTGGTGTCTCAATGGC  
 CTGGCCAGCTGCTCACAACGAAGAAACTCAGACTATGTGGCAAAACCAAAAGTCACTTCATG

**ACGCGT**ACGCGGCCGCTCGAGCAGAAAACATCTCAGAAGAGGATCTGGCAGCAAATGATATCCTGGATT  
 ACAAGGATGACGACGAT AAGGTTTAA

**Protein Sequence:** >RC205334 protein sequence  
 Red=Cloning site Green=Tags(s)

```

MLLFFTLGLLIHVFFASIFDIYFTSPLVHGMPQFTPLPPPARRLVLFVADGLRADALYELDENGNSRA
PFIRNIIMHEGSWGISHTRVPTESRPGHVALIAGFYEDVSAVAKGWKENPVEFDSL FNESKYTWSWSPD
ILPMFAKAGASGDHVVYTSYDAKREDFGAQDATKLDTWVFDNVKDFHHARNQSLFSKINEEKIVFFLHL
LGIDTNGHAHRPSSRDYKDNIKKVDDGVKEIVSMFNHFYGNKGKTTFFIFTSDHGMTDWSHGAGHPSETL
TPLVTVGAGIKYPORVSAQQFDDAFLKEWRLNWKRLDYNQADIAPLMTSLIGVFPPLNSVGIPLVDYLN
NTDLFKAESMFTNAVQILEQFKVKMTQKKEVTL PFLFTPFKLLSDSKQFNILRKARSYIKHRKFDEVVSL
CKELIHLALKGLSYYHTYDRFFLVGNVVI GFVGIWISYASLLIIKSHSNLIKGSKEVKKPSHLLPCSFVA
IGILVAFFLLIQACPWTYYVYGLLPLPIWYAVLREFQVIQDLVSVLTYPLSHFVGYLLAFTLGIEVLV
SFFYRYMLTAGLTAFAAWPFLTRLWTRAKMTLSWTFSSLLLAVFPLMPVVGRKPDISLVMGAGLLVLLL
SLCVVTSMLMKRKDSFIKEELLVHLLQVLSTVLSMYVVYSTQSSLLRKQGLPLMNQIISWATLASSLVVPL
LSSPVLQRLFSILLSTMSTYLLSTGYEALFPLVLSCLMFVWINIEQETLQQSGVCKQKLTSIQFSYN
TDITQFRQLYLDIRRAFFLVFFLVTAFFGTGNIASINFDLASVYCFLTVFSPFMMGALMMWKILIPFV
LVMCAFEAVQLTTQLSSKSLFLIVLVISDIMALHFFLVKDYGSWLDIGTISHYVIVMSMTIFLVFLNG
LAQLLTKKRLRCGKPKSHFM
  
```

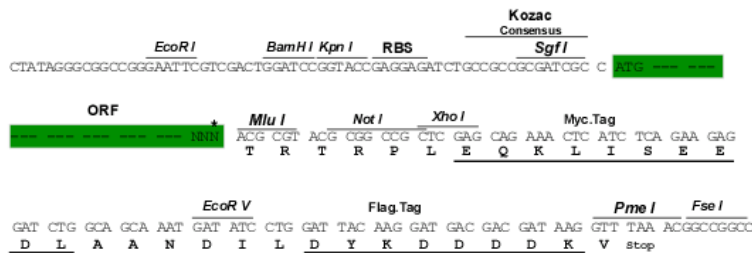
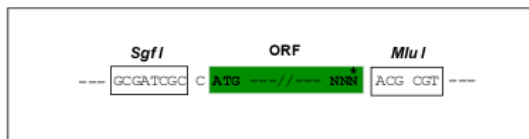
TRTRPLEQKLISEEDLAANDILDYKDDDDKV

**Chromatograms:** [https://cdn.origene.com/chromatograms/mk6315\\_c10.zip](https://cdn.origene.com/chromatograms/mk6315_c10.zip)

**Restriction Sites:** SgfI-MluI

**Cloning Scheme:**

Cloning sites used for ORF Shuttling:



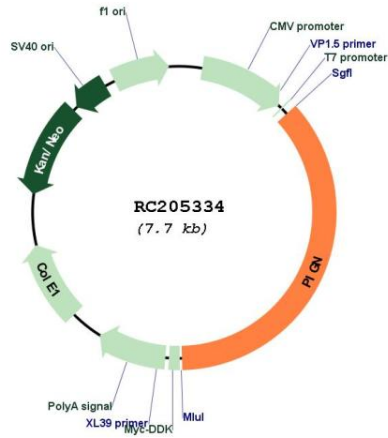
\* The last codon before the Stop codon of the ORF

**ACCN:** NM\_176787

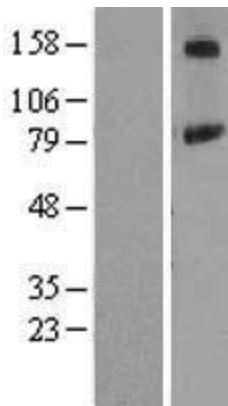
**ORF Size:** 2793 bp

<b>OTI Disclaimer:</b>	The molecular sequence of this clone aligns with the gene accession number as a point of reference only. However, individual transcript sequences of the same gene can differ through naturally occurring variations (e.g. polymorphisms), each with its own valid existence. This clone is substantially in agreement with the reference, but a complete review of all prevailing variants is recommended prior to use. <a href="#">More info</a>
<b>OTI Annotation:</b>	This clone was engineered to express the complete ORF with an expression tag. Expression varies depending on the nature of the gene.
<b>Components:</b>	The ORF clone is ion-exchange column purified and shipped in a 2D barcoded Matrix tube containing 10ug of transfection-ready, dried plasmid DNA (reconstitute with 100 ul of water).
<b>Reconstitution Method:</b>	<ol style="list-style-type: none"><li>1. Centrifuge at 5,000xg for 5min.</li><li>2. Carefully open the tube and add 100ul of sterile water to dissolve the DNA.</li><li>3. Close the tube and incubate for 10 minutes at room temperature.</li><li>4. Briefly vortex the tube and then do a quick spin (less than 5000xg) to concentrate the liquid at the bottom.</li><li>5. Store the suspended plasmid at -20°C. The DNA is stable for at least one year from date of shipping when stored at -20°C.</li></ol>
<b>RefSeq:</b>	<a href="#">NM_176787.5</a>
<b>RefSeq Size:</b>	4893 bp
<b>RefSeq ORF:</b>	2796 bp
<b>Locus ID:</b>	23556
<b>UniProt ID:</b>	<a href="#">O95427</a>
<b>Cytogenetics:</b>	18q21.33
<b>Protein Families:</b>	Transmembrane
<b>Protein Pathways:</b>	Glycosylphosphatidylinositol(GPI)-anchor biosynthesis, Metabolic pathways
<b>MW:</b>	105.8 kDa
<b>Gene Summary:</b>	This gene encodes a protein that is involved in glycosylphosphatidylinositol (GPI)-anchor biosynthesis. The GPI-anchor is a glycolipid found on many blood cells and serves to anchor proteins to the cell surface. This protein is expressed in the endoplasmic reticulum and transfers phosphoethanolamine (EtNP) to the first mannose of the GPI anchor. Two alternatively spliced variants, which encode an identical isoform, have been reported. [provided by RefSeq, Jul 2008]

Product images:



Circular map for RC205334



Western blot validation of overexpression lysate (Cat# [LY406118]) using anti-DDK antibody (Cat# [TA50011-100]). Left: Cell lysates from untransfected HEK293T cells; Right: Cell lysates from HEK293T cells transfected with RC205334 using transfection reagent MegaTran 2.0 (Cat# [TT210002]).