

Product datasheet for **RC205318**

PCTAIRE2 (CDK17) (NM_002595) Human Tagged ORF Clone

Product data:

Product Type:	Expression Plasmids
Product Name:	PCTAIRE2 (CDK17) (NM_002595) Human Tagged ORF Clone
Tag:	Myc-DDK
Symbol:	PCTAIRE2
Synonyms:	PCTAIRE2; PCTK2
Mammalian Cell Selection:	Neomycin
Vector:	pCMV6-Entry (PS100001)
E. coli Selection:	Kanamycin (25 ug/mL)



[View online »](#)

ORF Nucleotide Sequence:

>RC205318 ORF sequence
 Red=Cloning site Blue=ORF Green=Tags(s)

TTTTGTAATACGACTCACTATAGGGCGGCCGGGAATTCGTCGACTGGATCCGGTACCGAGGAGATCTGCC
 GCC**CGGATCGCC**

ATGAAAAATTTAAGAGAAGGCTATCCCTCACACTCCGAGGAAGTCAGACTATTGATGAATCATTGTCTG
 AATTGGCTGAACAAATGACTATTGAAGAAAACAGCAGCAAGGATAATGAGCCTATTGTGAAGAATGGCAG
 GCCTCCAACGCTCACAGTATGCATTCTTCTCCACCAGTACACAGGATCTTCAAGAAGCCCCATTG
 CGGAGACCACACAGTGTTATTGGAGGGAGCCTTGGCTCCTTCATGGCAATGCCAGAAAATGGAAGCAGAT
 TAGATATTGTTTCATGAAAATCTAAAAATGGGATCAGATGGTGAGAGTGACCAAGCTTCTGGGACATCATC
 TGATGAAGTCCAGTCACCTACAGGTGTTTGTCTCAGAAATCGTATACATAGACGGATCTCAATGGAGGAT
 TTAATAAGCGGTTATCACTGCCTGCAGACATCAGAATACCTGATGGATATCTTGAAAAGTTGCAGATAA
 ACAGTCCACCATTGACCAACCAATGAGTCGAAGGTCTCGTAGAGCTTCTTATCAGAAAATGGCTTTGG
 AAAAATGGAACCTACATCAAATTTGAAAAGCTTGGAGAGGGTACATATGCAACAGTATATAAAGGAAGA
 AGTAAATTGACAGAGAATTTGGTGGCATTAAAAGAGATCCGATTGGAACATGAAGAAGGTGCACCCCTGCA
 CAGCTATAAGAGAAGTTTCACTATTAAGGATTTAAAACATGCAATATAGTAACCTTACATGACATTGT
 TCACACAGATAAACTTGTGACTTTGGTGTGTTGAGTATCTGGATAAAGACCTGAAACAGTACATGGATGAC
 TGTGGAACATCATGAGTATGCACAACGTAAGGCTGTTTCTGTACCAAATCTACGTGGTTTGGCATATT
 GCCATAGAAGAAAGGTATTGCATCGAGACTTGAACCACAGAACCTCCTCATTATGAGAAAAGGAGAATT
 AAAGCTAGCAGATTTGGACTAGCCCGAGCCAAGTCAGTCCCACAAAGACCTACTCAAATGAAGTTGTC
 ACACTATGGTACCGGCCACCTGATGTGCTTCTTGGTTCCTCGGAGTACTCAACACAGATTGACATGTGGG
 GTGTTGGTTGCATTTTCTTGAATGGCTTCTGGAAGACCTTTATTTCCAGGATCAACCGTGAAGATGA
 ACTGCACTTAATTTCCGACTGCTAGGAACTCCATCTCAGGAACTTGGCCAGGTATTTCTTCAAATGAG
 GAGTTCAAGAACTACAACCTTCCAAAATATAAACCACAGCCTCTAATTAACCACGCACCCAGGTTAGACT
 CTGAAGGAATTGAGTTGATAACAAAATTTCTTCAAGTATGAATCTAAGAAAAGGGTTTCAAGTGAAGAGGC
 CATGAAACATGTGACTTTTCAAGTCTGGGACCAAGAATACATGCTTTACCAGAAAAGTGTATCAATATTC
 AGTTTGAAGAGATTGAGTTGAAAAGGACCCGGGTTTTGCAAAATTTCTTATCCAGAGACAGGACATG
 GGAAGAACAGAAGACAGAGCATGCTCTTT

ACGCGTACGCGGCCGCTCGAGCAGAAACTCATCTCAGAAGAGGATCTGGCAGCAAATGATATCCTGGATT
 ACAAGGATGACGACGATAAGGTTTAA

Protein Sequence:

>RC205318 protein sequence
 Red=Cloning site Green=Tags(s)

MKKFKRRLSLTLRGSQTIDESLSELAEQMTIEENSSKDNPIVKNRPPPTSHSMHSLHQYTGSAFKKPPPL
 RRPHSVIGGSLGFSMAMPRNGSRDLIVHENLKMGSDESQASGTSSDEVQSPTGVCLRNRIHRRISMED
 LNKRLSLPADIRIPDGYLEKLQINSPFDQPMRARRRSLSEIGFGKMETYIKLEKLGEGTYATVYKGR
 SKLTENLVALKEIRLEHEEGAPCTAIREVSLKDLKHANIVTLHDIVHTDKSLTLVFEYLDKDLKQYMD
 CGNIMSMHNVKFLYQILRGLAYCHRRKVLHRDLKPQNLLINEKELKLADFLARAKSVPTKTYSEVV
 TLWYRPPDVLLGSSEYSTQIDMWGVGCIFFEMASGRPLFPGSTVEDELHLIFRLLGTPSQETWPGISSNE
 EFKNYNFPKYKQPLINHAPRLDSEGIELITKFLQYESKKRVSAEAMKHVYFRSLGPRIHALPESVSIF
 SLKEIQLQKDPGFRNSSYPETGHGKNRRQSMFL

TRTRPLEQKLISEEDLAANDILDYKDDDDKV

Chromatograms:

https://cdn.origene.com/chromatograms/mk6138_d10.zip

Restriction Sites:

Sgfl-MluI

Cloning Scheme:


ACCN: NM_002595

ORF Size: 1569 bp

OTI Disclaimer: The molecular sequence of this clone aligns with the gene accession number as a point of reference only. However, individual transcript sequences of the same gene can differ through naturally occurring variations (e.g. polymorphisms), each with its own valid existence. This clone is substantially in agreement with the reference, but a complete review of all prevailing variants is recommended prior to use. [More info](#)

OTI Annotation: This clone was engineered to express the complete ORF with an expression tag. Expression varies depending on the nature of the gene.

Components: The ORF clone is ion-exchange column purified and shipped in a 2D barcoded Matrix tube containing 10ug of transfection-ready, dried plasmid DNA (reconstitute with 100 ul of water).

Reconstitution Method:

1. Centrifuge at 5,000xg for 5min.
2. Carefully open the tube and add 100ul of sterile water to dissolve the DNA.
3. Close the tube and incubate for 10 minutes at room temperature.
4. Briefly vortex the tube and then do a quick spin (less than 5000xg) to concentrate the liquid at the bottom.
5. Store the suspended plasmid at -20°C. The DNA is stable for at least one year from date of shipping when stored at -20°C.

RefSeq: [NM_002595.5](#)

RefSeq Size: 4194 bp

RefSeq ORF: 1572 bp

Locus ID: 5128

UniProt ID: [Q00537](#)

Cytogenetics: 12q23.1

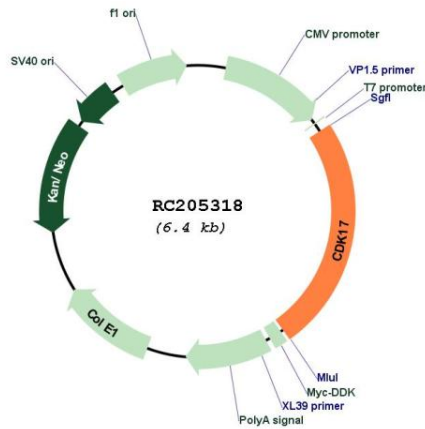
Domains: pkinase, TyrKc, S_TKc

Protein Families: Druggable Genome, Protein Kinase

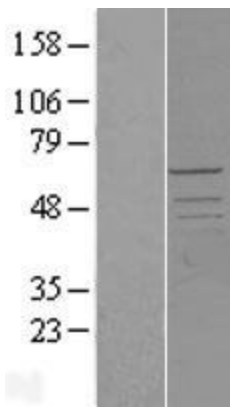
MW: 59.6 kDa

Gene Summary: The protein encoded by this gene belongs to the cdc2/cdkx subfamily of the ser/thr family of protein kinases. It has similarity to a rat protein that is thought to play a role in terminally differentiated neurons. Alternatively spliced transcript variants encoding different isoforms have been found. [provided by RefSeq, Jul 2010]

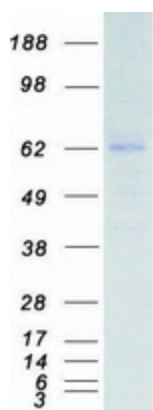
Product images:



Circular map for RC205318



Western blot validation of overexpression lysate (Cat# [LY400928]) using anti-DDK antibody (Cat# [TA50011-100]). Left: Cell lysates from untransfected HEK293T cells; Right: Cell lysates from HEK293T cells transfected with RC205318 using transfection reagent MegaTran 2.0 (Cat# [TT210002]).



Coomassie blue staining of purified CDK17 protein (Cat# [TP305318]). The protein was produced from HEK293T cells transfected with CDK17 cDNA clone (Cat# RC205318) using MegaTran 2.0 (Cat# [TT210002]).