

Product datasheet for **RC205315**

SRPK1 (NM_003137) Human Tagged ORF Clone

Product data:

Product Type:	Expression Plasmids
Product Name:	SRPK1 (NM_003137) Human Tagged ORF Clone
Tag:	Myc-DDK
Symbol:	SRPK1
Synonyms:	SFRSK1
Mammalian Cell Selection:	Neomycin
Vector:	pCMV6-Entry (PS100001)
E. coli Selection:	Kanamycin (25 ug/mL)



[View online »](#)

**ORF Nucleotide
Sequence:**

>RC205315 ORF sequence
 Red=Cloning site Blue=ORF Green=Tags(s)

TTTTGTAATACGACTCACTATAGGGCGGCCGGAATTCGTGCGACTGGATCCGGTACCGAGGAGATCTGCC
 GCC**CGGATCGCC**

ATGGAGCGGAAAGTGCTTGCCTCCAGGCCGAAAGAAAAGGACCAAGGCCAAGAAGGACAAAGCCCAA
 GGAAATCTGAAACTCAGCACCGAGGCTCTGCTCCCCTCTGAGAGTGATCTACCAGAGCAGGAAGAGGA
 GATTCTGGGATCTGATGATGATGAGCAAGAAGATCCTAATGATTATTGTAAGGAGGTTATCATCTTGTG
 AAAATTGGAGATCTATCAATGGGAGATACCATGTGATCCGAAAGTTAGGCTGGGGACACTTTTCAACAG
 TATGGTTATCATGGGATATTCAGGGGAAGAAATTTGTGGCAATGAAAGTAGTTAAAAGTGTGAACATTA
 CACTGAAACAGCACTAGATGAAATCCGGTTGCTGAAGTCAAGTTCGCAATTCAGACCCTAATGATCCAAAT
 AGAGAAATGGTTGTTCACTACTAGATGACTTTAAAATATCAGGAGTTAATGGAACACATATCTGCATGG
 TATTTGAAGTTTGGGGCATCATCTGCTCAAGTGGATCATCAAATCCAATATCAGGGGCTTCCACTGCC
 TTGTGTCAAAAAAATTATTCAGCAAGTGTACAGGGTCTTGATTATTTACATACCAAGTGCCGTATCACC
 CACACTGACATTAACCAGAGAACATCTTATTGTCAAGTGAATGAGCAGTACATTCGGAGGCTGGCTGCAG
 AAGCAACAGAATGGCAGCGATCTGGAGCTCCTCCGCCTTCCGGATCTGCAGTCAGTACTGCTCCCGAGCC
 TAAACCAGCTGACAAAATGTCAAAGAATAAGAAGAAGAAATTTGAAGAAGAAGCAGAAGCGCCAGGCAGAA
 TTAGTAGAGAAGCGAATGCAGGAAATGAGGAAATGGAGAAAGAGTCGGGCCCTGGGCAAAAAAGACCAA
 ACAAGCAAGAAGAATCAGAGAGTCTGTTGAAAGACCCCTTGAAGAGAACCCACCTAATAAAATGACCCA
 AGAAAACTTGAAGAGTCAAGTACCATTGGCCAGGATCAAACGCTTATGGAACGTGATACAGAGGGTGGT
 GCAGCAGAAATTAATTGCAATGGAGTGATTGAAGTCATTAATTACTCAGAACAGTAATAATGAAACAT
 TGAGACATAAAGAGGATCTACATAATGCTAATGACTGTGATGTCCAAAATTTGAATCAGGAATCTAGTTT
 CCTAAGCTCCCAAAATGGAGACAGCAGCACATCTCAAGAAACAGACTCTTGACACCTATAACATCTGAG
 GTGTCAGACACCATGGTGTGCCAGTCTTCTCACTGTAGGTCAGTCATTCAGTGAACAACACATTAGCC
 AACTTCAAGAAAGCATTGGGCAGAGATACCCTGTGAAGATGAACAAGAGCAAGAACATAACGGACCACT
 GGACAACAAGGAAAAATCCACGGCTGGAATTTTCTTGTAAATCCCCTTGAGCCAAAAATGCAGAAAAAG
 CTCAAGGTGAAGATTGCTGACCTTGAAATGCTTGTGGGTGCACAAACATTTCACTGAAGATATTCAAA
 CAAGGCAATATCGTTCCTTGAAGTCTAATCGGATCTGGCTATAATACCCCTGCTGACATTTGGAGCAC
 GGCATGCATGGCCTTGAAGTGGCCACAGGTGACTATTTGTTTGAACCTCATTACAGGGGAAGAGTACACT
 CGAGATGAAGATCACATTGCATTGATCATAGAACTTCTGGGGAAGGTGCCTCGCAAGCTCATTGTGGCAG
 GAAAAATTTCCAAGGAATTTTCCAAAAAAGGTGACCTGAAACATATCACGAAGCTGAAACCTTGGGG
 CCTTTTGTAGGTTCTAGTGGAGAAGTATGAGTGGTTCGAGGAAGAGGCAGCTGGCTTACAGATTTCTTA
 CTGCCATGTTGGAGCTGATCCCTGAGAAGAGAGCCACTGCCGCCGAGTGTCTCCGGCACCTTGGCTTA
 ACTCC

ACGCGTACGCGGCCGCTCGAGCAGAACTCATCTCAGAAGAGGATCTGGCAGCAATGATATCCTGGATT
 ACAAGGATGACGACGATAAGGTTTAA

Protein Sequence: >RC205315 protein sequence
Red=Cloning site Green=Tags(s)

```
MERKVLALQARKKRTKAKKDKAQRKSETQHRGSAPHSESDLPEQEEEILGSDDEQEDPNDYCKGGYHLV
KIGDLFNGRYHVIRKLGWGHFSTVWLSWDIQGKKFVAMKVVKSAEHYETALDEIRLLKSVRNSDPNDPN
REMVVQLLDDFKISGVNGTHICMVFEVLGHLLKWIISNYQGLPLPCVKKIIQQVLQGLDYLHTKCRIT
HTDIKPENILLSVNEQYIRRLAAEATEWQRSGAPPPSGSAVSTAPQPKPADKMSKNKKKKLKKKQKRQAE
LLEKRMQEIEMEKESGPGQKRPNKQEESESPVERPLKENPPNKMTQEKLEESSTIGDQTLMERDTEGG
AAEINCNGVIEVINYTQNSNNETLRHKEDLHNANDCDVQNLNQESSFLSSQNGDSSTSQETDSCTPITSE
VSDTMVCQSSSTVGQSFSEQHISQLQESIRAEIPCEDEQEQEHNGLDNGKSTAGNFLVNPLEPKNAEK
LKVKIADLGNACVWHKFTEDIQTRQYRSLEVLIGSGYNTPADIWSTACMAFELATGDYLFEPHSGEEYT
RDEDHIALIIELLGKVPKRLIVAGKYSKEFFTCKGDLKHITKLPWGLFEVLVEKYEWSQEEAAGFTDFL
LPMLELIPKRTAAECLRHPWLNS
```

TRTRPLEQKLISEEDLAANDILDYKDDDDKV

Chromatograms: https://cdn.origene.com/chromatograms/mk6138_e12.zip

Restriction Sites: SgfI-MluI

Cloning Scheme:



ACCN: NM_003137

ORF Size: 1965 bp

OTI Disclaimer: The molecular sequence of this clone aligns with the gene accession number as a point of reference only. However, individual transcript sequences of the same gene can differ through naturally occurring variations (e.g. polymorphisms), each with its own valid existence. This clone is substantially in agreement with the reference, but a complete review of all prevailing variants is recommended prior to use. [More info](#)

OTI Annotation: This clone was engineered to express the complete ORF with an expression tag. Expression varies depending on the nature of the gene.

Components: The ORF clone is ion-exchange column purified and shipped in a 2D barcoded Matrix tube containing 10ug of transfection-ready, dried plasmid DNA (reconstitute with 100 ul of water).

Reconstitution Method:

1. Centrifuge at 5,000xg for 5min.
2. Carefully open the tube and add 100ul of sterile water to dissolve the DNA.
3. Close the tube and incubate for 10 minutes at room temperature.
4. Briefly vortex the tube and then do a quick spin (less than 5000xg) to concentrate the liquid at the bottom.
5. Store the suspended plasmid at -20°C. The DNA is stable for at least one year from date of shipping when stored at -20°C.

RefSeq: [NM_003137.5](#)

RefSeq Size: 4380 bp

RefSeq ORF: 1968 bp

Locus ID: 6732

UniProt ID: [Q96SB4](#)

Cytogenetics: 6p21.31

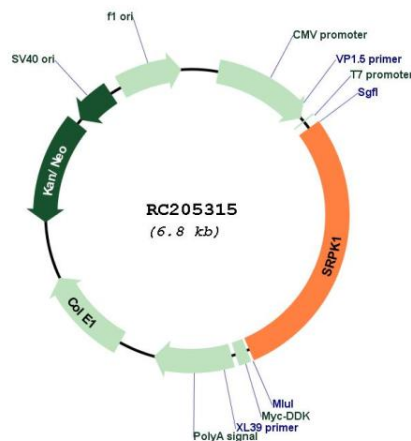
Domains: pkinase, TyrKc, S_TKc

Protein Families: Druggable Genome, Protein Kinase

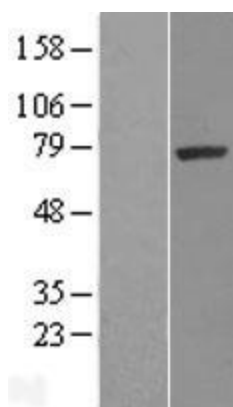
MW: 74.3 kDa

Gene Summary: This gene encodes a serine/arginine protein kinase specific for the SR (serine/arginine-rich domain) family of splicing factors. The protein localizes to the nucleus and the cytoplasm. It is thought to play a role in regulation of both constitutive and alternative splicing by regulating intracellular localization of splicing factors. Alternative splicing of this gene results in multiple transcript variants. Additional alternatively spliced transcript variants have been described for this gene, but their full length nature have not been determined.[provided by RefSeq, Jul 2010]

Product images:



Circular map for RC205315



Western blot validation of overexpression lysate (Cat# [LY401089]) using anti-DDK antibody (Cat# [TA50011-100]). Left: Cell lysates from untransfected HEK293T cells; Right: Cell lysates from HEK293T cells transfected with RC205315 using transfection reagent MegaTran 2.0 (Cat# [TT210002]).