

Product datasheet for **RC205314**

RIOK3 (NM_145906) Human Tagged ORF Clone

Product data:

Product Type:	Expression Plasmids
Product Name:	RIOK3 (NM_145906) Human Tagged ORF Clone
Tag:	Myc-DDK
Symbol:	RIOK3
Synonyms:	SUDD
Mammalian Cell Selection:	Neomycin
Vector:	pCMV6-Entry (PS100001)
E. coli Selection:	Kanamycin (25 ug/mL)



[View online »](#)

ORF Nucleotide Sequence:

>RC205314 ORF sequence
 Red=Cloning site Blue=ORF Green=Tags(s)

TTTTGTAATACGACTCACTATAGGGCGGCCGGAATTCGTCGACTGGATCCGGTACCGAGGAGATCTGCC
 GCC**CGATCGCC**

ATGGATCTGGTAGGAGTGGCATCGCCTGAGCCCGGACGCGCAGCGCCTGGGGACCCAGCAAGTGTCCAT
 GGGCTATTCTCAAATAACAATATCTTGTCTTTGGCTGATGTAATGAGTGAACAGCTGGCCAAAGAATT
 GCAGTTAGAAGAAGAAGCTGCCGTTTTCTGAAGTTGCTGTTGCTGAAGGACCATTTTACTGGAGAA
 AACATTGATACTTCCAGTGACCTTATGCTGGCTCAGATGCTACAGATGGAATATGACAGAGAATATGATG
 CACAGCTTAGGCGTGAAAAAAAAAATCAATGGAGATAGCAAAGTTTCCATTTCTTTGAAAAATTATCG
 AAAAGTGCATCCTTATGAAGACAGCGATAGCTCTGAAGATGAGGTTGACTGGCAGGATACTCGTGATGAT
 CCCTACAGACCAGCAAACCGGTTCCACTCCTAAAAAGGGCTTTATTGGAAAAGGAAAAGATATCACCA
 CCAAACATGATGAAGTAGTATGTGGGAGAAAGAACACAGCAAGAATGGAAAAATTTGCACCTGAGTTTCA
 GGTAGGAGATGGAATTGGAATGGATTTAAACTATCAAACCATGTTTTCAATGCTTTAAACAACATGCC
 TACTCAGAAGAAGCTCGAAGTGCCCGCTACATGAGAAAAAGGAGCATTCTACAGCAGAAAAAGCAGTTG
 ATCCTAAGACACGTTTACTTATGTATAAAATGGTCAACTCTGGAATGTTGGAGACAACTACTGGCTGTAT
 TAGTACAGGAAAGGAGTCTGTTGTCTTTTCATGCATATGGAGGGAGCATGGAGGATGAAAAGGAAGATAGT
 AAAGTTATACCTACAGAAATGTGCCATCAAGGATTTAAAAACAACCCTTAATGAATTTAAGAATCGTGACA
 AATATATTAAGATGATTTCAAGTTTAAAGATCGCTTCAGTAACTAAATCCACGTAAGATCATCCGCAT
 GTGGGCAGAAAAAGAAATGCACAATCTCGCAAGAATGCAGAGAGCTGGAATTCCTGTCCAACAGTTGTA
 CTACTGAAGAAACACATTTTAGTTATGTCTTTTATTGGCCATGATCAAGTCCAGCCCCTAAATTTAAAG
 AAGTAAAGCTCAATAGTGAAGAAATGAAAGAAGCCTACTATCAAACCTTTCATTTGATGCGGCAGTTATA
 TCATGAATGTACGCTTGCCATGCTGACCTCAGTGAGTATAACATGCTGTGGCATGCTGGAAAGGTGAGG
 AGCACATTTTGT

ACGCGTACGCGGCCGCTCGAGCAGAAACTCATCTCAGAAGAGGATCTGGCAGCAATGATATCCTGGATT
 ACAAGGATGACGACGATAAGGTTTAA

Protein Sequence:

>RC205314 protein sequence
 Red=Cloning site Green=Tags(s)

MDLVGVASPEPGTAAAWGPSKCPWAIPQNTISCSLADVMSEQLAKELQLEEEAAVFPEVAVAEVGPFITGE
 NIDTSSDLMLAQMLQMEYDREYDAQLRREKKKFNKNGSKVSI SFENYRKVHPYEDSDSSEDEVDWQDTRDD
 PYRPAKPVPTPKKGF IGKGDITTKHDEVVCGRKNTARMENFAPEFQVGDGIGMDLKL SNHVFNALKQHA
 YSEERRSARLHEKKEHSTA EKAVDPKTRLLMYKMVNSGMLETITGICISTGKESVVFHAYGGSMEDEKEDS
 KVIPTCAIKVFKTTLNEFKNRDKYIKDDFRFKDRFSKLNPRKI IRMWAEKEMHNLARMQRAGIPCPVV
 LLLKHHILVMSF IGHDQVPAPKLKEVKLNSEEMKEAYYQTLHLMRQLYHECTLVHADLSEYNMLWHAGKVR
 STFC

TRTRPLEQKLISEEDLAANDILDYKDDDDKV

Chromatograms:

https://cdn.origene.com/chromatograms/mk6671_f07.zip

Restriction Sites:

SgfI-MluI

Cloning Scheme:


ACCN: NM_145906

ORF Size: 1272 bp

OTI Disclaimer: The molecular sequence of this clone aligns with the gene accession number as a point of reference only. However, individual transcript sequences of the same gene can differ through naturally occurring variations (e.g. polymorphisms), each with its own valid existence. This clone is substantially in agreement with the reference, but a complete review of all prevailing variants is recommended prior to use. [More info](#)

OTI Annotation: This clone was engineered to express the complete ORF with an expression tag. Expression varies depending on the nature of the gene.

Components: The ORF clone is ion-exchange column purified and shipped in a 2D barcoded Matrix tube containing 10ug of transfection-ready, dried plasmid DNA (reconstitute with 100 ul of water).

Reconstitution Method:

1. Centrifuge at 5,000xg for 5min.
2. Carefully open the tube and add 100ul of sterile water to dissolve the DNA.
3. Close the tube and incubate for 10 minutes at room temperature.
4. Briefly vortex the tube and then do a quick spin (less than 5000xg) to concentrate the liquid at the bottom.
5. Store the suspended plasmid at -20°C. The DNA is stable for at least one year from date of shipping when stored at -20°C.

RefSeq: [NM_145906.1](#), [NP_665913.1](#)

RefSeq Size: 3589 bp

RefSeq ORF: 1274 bp

Locus ID: 8780

Cytogenetics: 18q11.2

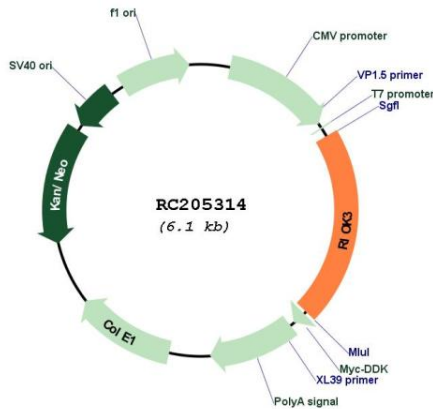
Domains: RIO

Protein Families: Druggable Genome, Protein Kinase

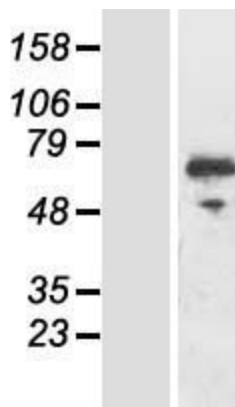
MW: 48.4 kDa

Gene Summary: This gene was first identified by the similarity of its product to the *Aspergillus nidulans* Sudd protein. This gene is now recognized as a member of the right open reading frame (RIO) kinase gene family. This gene encodes a serine/threonine kinase that localizes to the cytoplasm and plays a role in the processing of the pre-40 S ribosomal subunit. Alternative splicing results in multiple transcript variants. [provided by RefSeq, Jan 2017]

Product images:



Circular map for RC205314



Western blot validation of overexpression lysate (Cat# [LY407842]) using anti-DDK antibody (Cat# [TA50011-100]). Left: Cell lysates from untransfected HEK293T cells; Right: Cell lysates from HEK293T cells transfected with RC205314 using transfection reagent MegaTran 2.0 (Cat# [TT210002]).