

Product datasheet for RC205312

CRISP2 (NM_003296) Human Tagged ORF Clone

Product data:

| | |
|---------------------------|---|
| Product Type: | Expression Plasmids |
| Product Name: | CRISP2 (NM_003296) Human Tagged ORF Clone |
| Tag: | Myc-DDK |
| Symbol: | CRISP2 |
| Synonyms: | CRISP-2; CT36; GAPDL5; TPX1; TSP1 |
| Mammalian Cell Selection: | Neomycin |
| Vector: | pCMV6-Entry (PS100001) |
| E. coli Selection: | Kanamycin (25 ug/mL) |
| ORF Nucleotide Sequence: | >RC205312 ORF sequence Red=Cloning site Blue=ORF Green=Tags(s) |

TTTTGTAATACGACTCACTATAGGGCGGCCGGAATTCGTCGACTGGATCCGGTACCGAGGAGATCTGCC
GCC**CGATCGCC**

ATGGCTTTACTACCGGTGTTGTTTCTGGTTACTGTGCTGCTTCCATCTTTACCTGCAGAAGGAAAGGATC
CCGCTTTTACTGCTTTGTTAACCACCCAGTTGCAAGTGCAAAGGGAGATTGTAATAAACACAATGAACT
AAGGAAAGCAGTCTCTCCACCTGCCAGTAACATGCTAAAGATGGAATGGAGCAGAGAGGTAACAACGAAT
GCCCAAAGGTGGCAAACAAGTGCACCTTACAACATAGTGATCCAGAGGACCGCAAACAGTACAAGT
GTGGTGAGAATCTCTATATGTCAAGTGACCCTACTTCCTGGTCTCTGCAATCCAAGCTGGTATGACGA
GATCCTAGATTTTGTCTATGGTGTAGGACCAAAGAGTCCCAATGCAGTTGTTGGACATTATACTCAGCTT
GTTTGGTACTCGACTTACCAGGTAGGCTGTGGAATTGCCTACTGTCCCAATCAAGATAGTCTAAAATACT
ACTATGTTTGCCAATATTGTCCTGCTGGTAATAATATGAATAGAAAGAATACCCCGTACCAACAAGGAAC
ACCTTGTGCCGTTGCCCTGATGACTGTGACAAAGGACTATGCACCAATAGTTGCCAGTATCAAGATCTC
CTAAGTAACTGTGATTCTTGAAGAATACAGCTGGCTGTGAACATGAGTTACTCAAGGAAAAGTGAAGG
CTACTTGCCTATGTGAGAACAAAATTTAC

ACGCGTACGCGGCCGCTCGAGCAGAAACTCATCTCAGAAGAGGATCTGGCAGCAAATGATATCCTGGATT
ACAAGGATGACGACGATAAGGTTTAA



[View online »](#)

Protein Sequence: >RC205312 protein sequence
 Red=Cloning site Green=Tags(s)

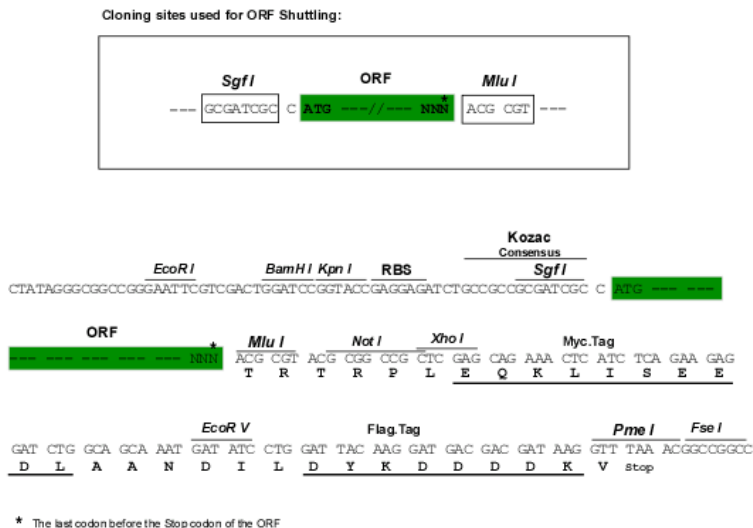
MALLPVLFLVTVLLPSLPAEGKDP AFTALLTTQLQVQREIVNKHNELRKAVSPPASNMLKMEWSREVTTN
 AQRWANKCTLQHSDPEDRKTSTRCGENLYMSSDPTSWSSAIQSWYDEILDFVYGVGPKSPNAVVGHYTQL
 VWYSTYQVGGCIAYCPNQDSLKYYYYVCYCPAGNNMNRKNTPYQQGTPCAGCPDDCDKGLCTNSCQYQDL
 LSNCDSLKNTAGCEHELLKEKCKATCLCENKIY

TRTRPLEQKLISEEDLAANDILDYKDDDDKV

Chromatograms: https://cdn.origene.com/chromatograms/mk6315_a04.zip

Restriction Sites: SgfI-MluI

Cloning Scheme:



ACCN: NM_003296

ORF Size: 729 bp

OTI Disclaimer: The molecular sequence of this clone aligns with the gene accession number as a point of reference only. However, individual transcript sequences of the same gene can differ through naturally occurring variations (e.g. polymorphisms), each with its own valid existence. This clone is substantially in agreement with the reference, but a complete review of all prevailing variants is recommended prior to use. [More info](#)

OTI Annotation: This clone was engineered to express the complete ORF with an expression tag. Expression varies depending on the nature of the gene.

Components: The ORF clone is ion-exchange column purified and shipped in a 2D barcoded Matrix tube containing 10ug of transfection-ready, dried plasmid DNA (reconstitute with 100 ul of water).

Reconstitution Method:

1. Centrifuge at 5,000xg for 5min.
2. Carefully open the tube and add 100ul of sterile water to dissolve the DNA.
3. Close the tube and incubate for 10 minutes at room temperature.
4. Briefly vortex the tube and then do a quick spin (less than 5000xg) to concentrate the liquid at the bottom.
5. Store the suspended plasmid at -20°C. The DNA is stable for at least one year from date of shipping when stored at -20°C.

RefSeq: [NM_003296.4](#)

RefSeq Size: 1413 bp

RefSeq ORF: 732 bp

Locus ID: 7180

UniProt ID: [P16562](#)

Cytogenetics: 6p12.3

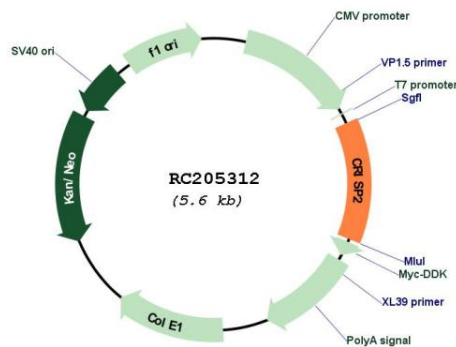
Domains: SCP

Protein Families: Secreted Protein

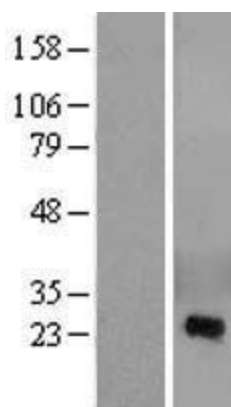
MW: 27.3 kDa

Gene Summary: May regulate some ion channels' activity and thereby regulate calcium fluxes during sperm capacitation.[UniProtKB/Swiss-Prot Function]

Product images:



Circular map for RC205312



Western blot validation of overexpression lysate (Cat# [LY418782]) using anti-DDK antibody (Cat# [TA50011-100]). Left: Cell lysates from untransfected HEK293T cells; Right: Cell lysates from HEK293T cells transfected with RC205312 using transfection reagent MegaTran 2.0 (Cat# [TT210002]).