

Product datasheet for **RC205311**

TULP2 (NM_003323) Human Tagged ORF Clone

Product data:

Product Type:	Expression Plasmids
Product Name:	TULP2 (NM_003323) Human Tagged ORF Clone
Tag:	Myc-DDK
Symbol:	TULP2
Synonyms:	CT65; TUBL2
Mammalian Cell Selection:	Neomycin
Vector:	pCMV6-Entry (PS100001)
E. coli Selection:	Kanamycin (25 ug/mL)



[View online »](#)

ORF Nucleotide Sequence:

>RC205311 ORF sequence
 Red=Cloning site Blue=ORF Green=Tags(s)

TTTTGTAATACGACTCACTATAGGGCGGCCGGAATTCGTCGACTGGATCCGGTACCGAGGAGATCTGCC
 GCC**CGGATCGCC**

ATGTCTCAGGATAATGACACATTGATGAGAGACATCTGGGCATGAGCTCGCTGCTATGAGGCTGCAGA
 AGCTGGAACAGCAGCGGGCTGTTTAAAAAGAAGCAGCGACAGAAGCGCCAGGAGCTCCTCATGGTTCA
 GGCCAATCCTGACGCTTCCCCGGCTTTGGCGCTCTGTCTGCGGGAGGAGCGCCTTTAGGTGACAGA
 GGCTTGGGAACCTTTCTCCGGAAGAAAGTGTGAGAGGCACATCTGCCCTCTGGCATCCACAGTGCC
 TGGGCACCGTGAGCTGTGGTGGAGACGGCAGGGCGAGCGGCCTCCCGACACCGCGGACAGAAGCAGT
 GTTCAGGAATCTCGTCTCCAGTCCCCTTTCTTATCTGGCTCCCAGACAATCCGATGCAGAATTGGAG
 GAAGTCTCGTGGAGAATGGTCCGTCTCTCCCCACCTTTAAACAGTCTCCGAGAATCCGACGCAAGG
 GTTGGCAAGCCCAACGACCTGGGACCGTGCAGAGGGTGGAGTACTCCAGGATATGGGAGATGC
 ACACAAGTCACCAATATGGGACCAACCTGGAATGGATGGTACTGTGTATATGAAACTTGGCCTTC
 CAAAAGGAAGAAGACTTGGAAAAGAAGAGAGAGGCCTCTGAGTCTACAGGACGAACTCCTCAGCAGCAC
 ACAACGAAGATTGTCCAAGGCCCTGAAAGCGGAGGGTGGCACGGACAGCGACCATATGAGGCACGAAGC
 CTCTTGGCAATCCGCTCCCCCTGCCCTGGGCTGGAGGAGGACATGGAAGCCTACGTGCTGCGGCCAGCG
 CTCCCGGGCACCATGATGCAGTGTACCTACCCGTGACAAGCAGCGCTGGACAAGGGCTTGTCCCCC
 TCTACTACCTCTACCTGGAGACCTCTGACAGCTGCAGCGCTTCTCTGGCTGGGCGAAAGAGAAGAAG
 GAGCAAACTTCTAATTACCTCATCTCCCTGGATCCTACACACCTATCTCGGGACGGGACAATTTCTGTG
 GGCAAAAGTCAGATCCAATGTCTTCAGACCAAGTTCACCATCTTGACAATGGGGTGAATCTGACCGGG
 AGCATTTAACAGGAATACTGCCGGATCAGACAGGAGCTGGGGCTGTGTGTTATGAGCCCAACGCTT
 AGGATACCTGGGCTCGGAAAATGACTGTGATTCTCCAGGAACCAACAGCCAGAACCAGCGAATCAAT
 GTCAGCCACTAAATGAACAGGAGTCTGCTACTGAGTCTTACCAACGTGGGGACAACAAGGGTGTCTT
 TGTTCACAACAAAACCCGCTCGTGGGACAAGGAGAACGGTGTCTACACGCTCAATTTCCATGGTCGAGT
 CACTCGGGCTTCCGTGAAGAACTTCAAATCGTGGATCCCAAACCAAGAACATCTGGTCTCCAGTTC
 GGCCGAGTGGGCCAGACACATTACCATTGACTTCTGCTTTCCATTTAGCCCGCTCCAGGCCTTCAGCA
 TCTGCTTGTCCAGTTTCAAT

ACGCGTACGCGGCCGCTCGAGCAGAACTCATCTCAGAAGAGGATCTGGCAGCAAATGATATCTGGATT
 ACAAGGATGACGACGATAAGGTTTAA

Protein Sequence:

>RC205311 protein sequence
 Red=Cloning site Green=Tags(s)

MSQDNDTLMRDILGHELAAMRLQKLEQQRRLFEKKQRQKRQELLMVQANPDASPWLWRSCLREERLLGDR
 GLGNPFLRKKVSEAHLPSTGHSALGTVSCGGDGRGERLPTPRTEAVFRNLGLQSPFLSWLPDNSDAELE
 EVSVENGVSPPPFKQSPRIRRGWQAHQRPQTRAEGESDSQDMGDAHKSPNMGPNPMDGDCVYENLAF
 QKEEDLEKKREASESTGTNSSAAHNEELSKALKGEGGTDSDHMRHEASLAIRSPCPGLEEDMEAYVLRPA
 LPGTMMQCYLTRDKHGVDKGLFPLYLYLETSDSLQRFLLAGRKRRTSKTSNYLISLDPHTLSRDGNFV
 GKVRSNVFSTKFTIFDNGVNPDRHLTRNTARIRQELGAVCYEPNVLYLGPVKMTVILPGTNSQNRIN
 VQPLNEQESLLSRYQRGDKQLLLLLHNKTPSWDKENGVYTLNFHGRVTRASVKNFQIVDPKHQEHVLPQF
 GRVGPDTFTMDFCFPFSPLQAFSICLSSFN

TRTRPLEQKLISEEDLAANDILDYKDDDDKV

Chromatograms:

https://cdn.origene.com/chromatograms/mk6316_c08.zip

Restriction Sites:

SgfI-MluI

Cloning Scheme:

ACCN: NM_003323

ORF Size: 1560 bp

OTI Disclaimer: The molecular sequence of this clone aligns with the gene accession number as a point of reference only. However, individual transcript sequences of the same gene can differ through naturally occurring variations (e.g. polymorphisms), each with its own valid existence. This clone is substantially in agreement with the reference, but a complete review of all prevailing variants is recommended prior to use. [More info](#)

OTI Annotation: This clone was engineered to express the complete ORF with an expression tag. Expression varies depending on the nature of the gene.

Components: The ORF clone is ion-exchange column purified and shipped in a 2D barcoded Matrix tube containing 10ug of transfection-ready, dried plasmid DNA (reconstitute with 100 ul of water).

- Reconstitution Method:**
1. Centrifuge at 5,000xg for 5min.
 2. Carefully open the tube and add 100ul of sterile water to dissolve the DNA.
 3. Close the tube and incubate for 10 minutes at room temperature.
 4. Briefly vortex the tube and then do a quick spin (less than 5000xg) to concentrate the liquid at the bottom.
 5. Store the suspended plasmid at -20°C. The DNA is stable for at least one year from date of shipping when stored at -20°C.

RefSeq: [NM_003323.3](#)
RefSeq Size: 1791 bp

RefSeq ORF: 1563 bp

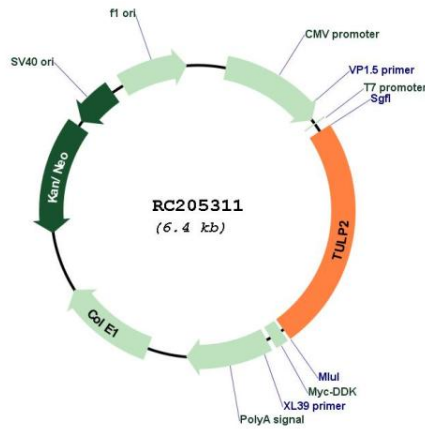
Locus ID: 7288

UniProt ID: [O00295](#)
Cytogenetics: 19q13.33

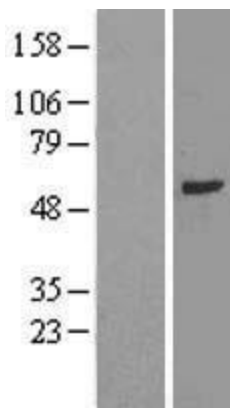
MW: 58.7 kDa

Gene Summary: TULP2 is a member of a family of tubby-like genes (TULPs) that encode proteins of unknown function. Members of this family have been identified in plants, vertebrates, and invertebrates. The TULP proteins share a conserved C-terminal region of approximately 200 amino acid residues. [provided by RefSeq, Jul 2008]

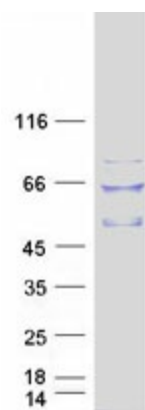
Product images:



Circular map for RC205311



Western blot validation of overexpression lysate (Cat# [LY418766]) using anti-DDK antibody (Cat# [TA50011-100]). Left: Cell lysates from untransfected HEK293T cells; Right: Cell lysates from HEK293T cells transfected with RC205311 using transfection reagent MegaTran 2.0 (Cat# [TT210002]).



Coomassie blue staining of purified TULP2 protein (Cat# [TP305311]). The protein was produced from HEK293T cells transfected with TULP2 cDNA clone (Cat# RC205311) using MegaTran 2.0 (Cat# [TT210002]).