

Product datasheet for RC205310

SLC30A3 (NM_003459) Human Tagged ORF Clone

Product data:

Product Type: Expression Plasmids
Product Name: SLC30A3 (NM_003459) Human Tagged ORF Clone
Tag: Myc-DDK
Symbol: SLC30A3
Synonyms: ZNT3
Mammalian Cell Selection: Neomycin
Vector: pCMV6-Entry (PS100001)
E. coli Selection: Kanamycin (25 ug/mL)
ORF Nucleotide Sequence: >RC205310 ORF sequence
 Red=Cloning site Blue=ORF Green=Tags(s)

TTTTGTAATACGACTCACTATAGGGCGGCCGGAATTCGTCGACTGGATCCGGTACCGAGGAGATCTGCC
 GCC**CGGATCGCC**

ATGGAGCCCTCTCCAGCCGCTGGGGCTTGGAGACCACTCGCCTGGTGAGCCCCGGGACCGCGGTGGCG
 CCGGAGGCAGCCTGCGTTTGAAGAGTCTCTTACAGAGCCCTCAGAGCCCTCCCTGAGGAGTCAAACC
 TGTGGAGATGCCCTTCCACCCTGCCACAGGGACCCCTTCCGCCCGGGCCTTACCCCTGAGAGGCTG
 CATGCACGGAGGCAGCTATATGCTGCCTGTGCCGTTTGTCTTTCATGGCTGGGAGGTGGTCGGCG
 GGTATCTGGCACACAGCCTGGCCATCATGACCGATGCAGCCACTTGCTGGCGGATGTGGGCAGCATGAT
 GGGCAGCCTCTTCTCCCTCTGGCTCTCCACCCGTCCAGCCACCCGACCATGACCTTTGGCTGGCACCGT
 TCAGAGACTCTGGGGCTTTGGCCTCTGTGGTCTCCCTCTGGATGGTCACTGGCATCCTCCTGTACCTGG
 CCTTCGTCGCGCTGCTGCACAGCGACTACCACATCGAGGGGGTGCCATGCTGCTGACCGCCAGCATCGC
 AGTCTGTGCCAACCTGTTAATGGCCTTTGTGCTGCACAGGCTGGGCCCCACAGCCACGGGTCTAGG
 GGAGCAGAGTATGCACCGCTGGAGGAGGGCCTGAAGAGCCCTGCCCTGGGGAACACCAGCGTCCGGG
 CGGCATTTGTGCACGTGCTGGGGACCTCCTGCAGAGCTTTGGGGTACTGGCTGCCTCCATCCTCATCTA
 CTTCAAGCCTCAATAAAGGCAGCCGACCCATCAGCACCTTCTCTTCCATCTGTGCCCTTGGATCC
 ACCGCTCCCACCTCCGAGACGTTCTTGAATCCTCATGGAAGGTACCCCGCAATGTGGGGTTCGAAC
 CTGTGCGGATACGCTGTTGTCCGTGCCAGGAGTCCGGGCAACCCATGAGCTGCACCTGTGGGCCCTTAC
 GCTCACTTACCATGTTGCCTCTGCACACCTGGCCATCGACTCCACCGCTGACCCTGAAGCCGCTCCTGGCT
 GAAGCCTCATCCCGCTCTACTCCCGTTTGGATTCTCCAGCTGCACCCTGCAGGTGCAGCAGTATCAGC
 CGGAGATGGCCAGTGCCTGCGCTGCCAGGAACCCCAAGCC

ACGCGTACGCGGCCGCTCGAGCAGAACTCATCTCAGAAGAGGATCTGGCAGCAATGATATCCTGGATT
 ACAAGGATGACGACGATAAGGTTTAA



[View online >](#)

Protein Sequence: >RC205310 protein sequence
Red=Cloning site Green=Tags(s)

MEPSPAAGGLETTTRLVSPDRGGAGGSLRLKSLFTEPSEPLPEESKPVEMPFHHCHRDPLPPPGLTPERL
HARRQLYAACAVCFVFMAGEVVGGLAHLAHTDAHLLADVGSMMGSLFSLWLSTRPATRTMTFGWHR
SETLGALASVVSLWMVTGILLYLAFVRLHSDYHIEGGAMLLTASIAVCANLLMAFVLHQAGPPHSHGSR
GAEYAPLEEGPEEPLPLGNTSVRAAFVHVLGDLQSFVLAASILYFKPQYKAADPISTFLFSICALGS
TAPTLRDVLRILMEGTPRNVGFEPVRDTHLLSVPGVVRATHELHLWALTLTYHVASAHLAIDSTADPEAVLA
EASSRLYSRFGFSSCTLQVEQYQPEMAQCLRCQEPQQA

TRTRPLEQKLISEEDLAANDILDYKDDDDKV

Chromatograms: https://cdn.origene.com/chromatograms/mk6028_a05.zip

Restriction Sites: SgfI-MluI

Cloning Scheme:



* The last codon before the Stop codon of the ORF

ACCN: NM_003459

ORF Size: 1164 bp

OTI Disclaimer: The molecular sequence of this clone aligns with the gene accession number as a point of reference only. However, individual transcript sequences of the same gene can differ through naturally occurring variations (e.g. polymorphisms), each with its own valid existence. This clone is substantially in agreement with the reference, but a complete review of all prevailing variants is recommended prior to use. [More info](#)

OTI Annotation: This clone was engineered to express the complete ORF with an expression tag. Expression varies depending on the nature of the gene.

Components: The ORF clone is ion-exchange column purified and shipped in a 2D barcoded Matrix tube containing 10ug of transfection-ready, dried plasmid DNA (reconstitute with 100 ul of water).

Reconstitution Method:

1. Centrifuge at 5,000xg for 5min.
2. Carefully open the tube and add 100ul of sterile water to dissolve the DNA.
3. Close the tube and incubate for 10 minutes at room temperature.
4. Briefly vortex the tube and then do a quick spin (less than 5000xg) to concentrate the liquid at the bottom.
5. Store the suspended plasmid at -20°C. The DNA is stable for at least one year from date of shipping when stored at -20°C.

Note: Plasmids are not sterile. For experiments where strict sterility is required, filtration with 0.22um filter is required.

RefSeq: [NM_003459.5](#)

RefSeq Size: 2108 bp

RefSeq ORF: 1167 bp

Locus ID: 7781

UniProt ID: [Q99726](#)

Cytogenetics: 2p23.3

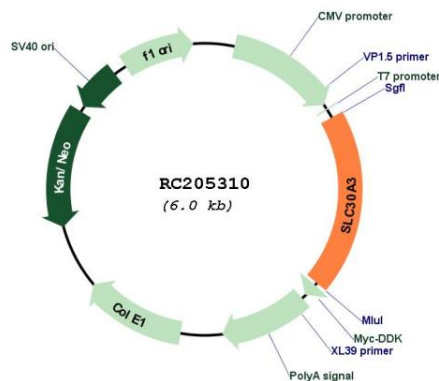
Domains: Cation_efflux

Protein Families: Secreted Protein, Transmembrane

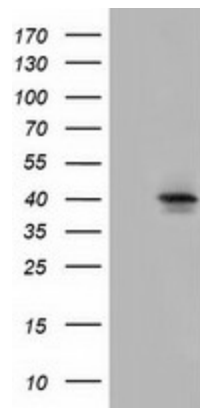
MW: 41.9 kDa

Gene Summary: Involved in accumulation of zinc in synaptic vesicles.[UniProtKB/Swiss-Prot Function]

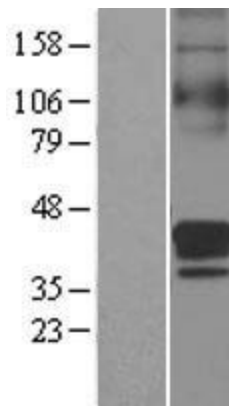
Product images:



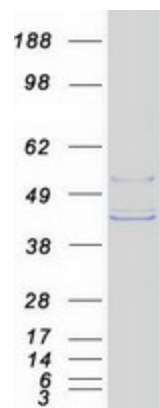
Circular map for RC205310



HEK293T cells were transfected with the pCMV6-ENTRY control (Cat# [PS100001], Left lane) or pCMV6-ENTRY SLC30A3 (Cat# RC205310, Right lane) cDNA for 48 hrs and lysed. Equivalent amounts of cell lysates (5 ug per lane) were separated by SDS-PAGE and immunoblotted with anti-SLC30A3 (Cat# [TA501498]). Positive lysates [LY401170] (100ug) and [LC401170] (20ug) can be purchased separately from OriGene.



Western blot validation of overexpression lysate (Cat# [LY401170]) using anti-DDK antibody (Cat# [TA50011-100]). Left: Cell lysates from untransfected HEK293T cells; Right: Cell lysates from HEK293T cells transfected with RC205310 using transfection reagent MegaTran 2.0 (Cat# [TT210002]).



Coomassie blue staining of purified SLC30A3 protein (Cat# [TP305310]). The protein was produced from HEK293T cells transfected with SLC30A3 cDNA clone (Cat# RC205310) using MegaTran 2.0 (Cat# [TT210002]).