

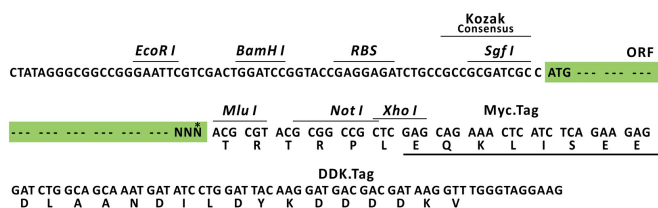
Product datasheet for RC205309L3

CPNE6 (NM_006032) Human Tagged Lenti ORF Clone

Product data:

Product Type:	Expression Plasmids
Product Name:	CPNE6 (NM_006032) Human Tagged Lenti ORF Clone
Tag:	Myc-DDK
Symbol:	CPNE6
Mammalian Cell Selection:	Puromycin
Vector:	pLenti-C-Myc-DDK-P2A-Puro (PS100092)
E. coli Selection:	Chloramphenicol (34 ug/mL)
ORF Nucleotide Sequence:	The ORF insert of this clone is exactly the same as(RC205309).
Restriction Sites:	SgfI-MluI
Cloning Scheme:	

Cloning sites used for ORF Shuttling:



* The last codon before the Stop codon of the ORF.

ACCN: NM_006032

ORF Size: 1671 bp



[View online »](#)

OTI Disclaimer:	The molecular sequence of this clone aligns with the gene accession number as a point of reference only. However, individual transcript sequences of the same gene can differ through naturally occurring variations (e.g. polymorphisms), each with its own valid existence. This clone is substantially in agreement with the reference, but a complete review of all prevailing variants is recommended prior to use. More info
OTI Annotation:	This clone was engineered to express the complete ORF with an expression tag. Expression varies depending on the nature of the gene.
Components:	The ORF clone is ion-exchange column purified and shipped in a 2D barcoded Matrix tube containing 10ug of transfection-ready, dried plasmid DNA (reconstitute with 100 ul of water).
Reconstitution Method:	<ol style="list-style-type: none"> 1. Centrifuge at 5,000xg for 5min. 2. Carefully open the tube and add 100ul of sterile water to dissolve the DNA. 3. Close the tube and incubate for 10 minutes at room temperature. 4. Briefly vortex the tube and then do a quick spin (less than 5000xg) to concentrate the liquid at the bottom. 5. Store the suspended plasmid at -20°C. The DNA is stable for at least one year from date of shipping when stored at -20°C.
RefSeq:	NM_006032.2
RefSeq Size:	2235 bp
RefSeq ORF:	1674 bp
Locus ID:	9362
UniProt ID:	O95741
Cytogenetics:	14q11.2
Domains:	C2, VWA
MW:	62 kDa
Gene Summary:	This gene encodes a member of the copine family. Members of this family are calcium-dependent, phospholipid-binding proteins with C2 domains, two calcium- and phospholipid-binding domains. Through their domain structure and lipid binding capabilities, these proteins may play a role in membrane trafficking. This protein is thought to be brain-specific and has a domain structure of two N-terminal C2 domains and one von Willebrand factor A domain. It may have a role in synaptic plasticity. [provided by RefSeq, Jul 2013]