

## Product datasheet for **RC205308**

### PSMA8 (NM\_001025097) Human Tagged ORF Clone

#### Product data:

Product Type:	Expression Plasmids
Product Name:	PSMA8 (NM_001025097) Human Tagged ORF Clone
Tag:	Myc-DDK
Symbol:	PSMA8
Synonyms:	PSMA7L
Mammalian Cell Selection:	Neomycin
Vector:	pCMV6-Entry (PS100001)
E. coli Selection:	Kanamycin (25 ug/mL)
ORF Nucleotide Sequence:	>RC205308 representing NM_001025097 Red=Cloning site Blue=ORF Green=Tags(s)

TTTTGTAATACGACTCACTATAGGGCGGCCGGAATTCGTCGACTGGATCCGGTACCGAGGAGATCTGCCGCC**CGATCGCC**

ATGGCGTCTCGATATGACAGGGCGATCACTGTCTTCTCCCAGACGGACACCTTTTTCAAGTTGAATATGCCAGGAAGCGGTGAAGAAAGGATCCACC GCGGTCGGAATTCGAGGACTTACTGCTGATGCTAGAGTAGTAATAACAGAGCCCGTGTGGAGTGCCAGAGCCATAAGCTTACGGTTGAGGACCCAGTCACTGTAGAATACATAACTCGCTTCATAGCAACTTTAAAGCAGAAATATACCCAAAGCAATGGACGAAGACCTTTTGGTATTTCTGCCTAATTGTAGTTTTGATGATGATGGTATCTCAAGATTGTATCAGACAGATCCTTCTGGTACTTATCATGCTTGGAAGCAAATGCAATAGGCCGAAGTGCTAAAAGTTCGAGAATTTCTAGAAAAGAATTACACAGAAGATGCCATAGCAAGTGACAGTGAAGCTATCAAGTTAGCAATAAAAGCTTTGCTAGAAAGTTGCCAGTCTGGTGAAAAAACATTGAACCTTGCTATAATAAGAAGAAATCAACCTTTGAAGATGTTTAGTGCAAAAGAAGTTGAATTATGTAACTGAAATAGAAAAGGAAAAGGAAGAAGCAGAGAAGAAAAAATCAAAGAAATCTGTC

**ACGCGT**ACGCGGCCGCTCGAGCAGAACTCATCTCAGAAGAGGATCTGGCAGCAAATGATATCCTGGATTACAAGGATGACGACGATAAGGTTTAA



[View online »](#)

**Protein Sequence:** >RC205308 representing NM\_001025097  
 Red=Cloning site Green=Tags(s)

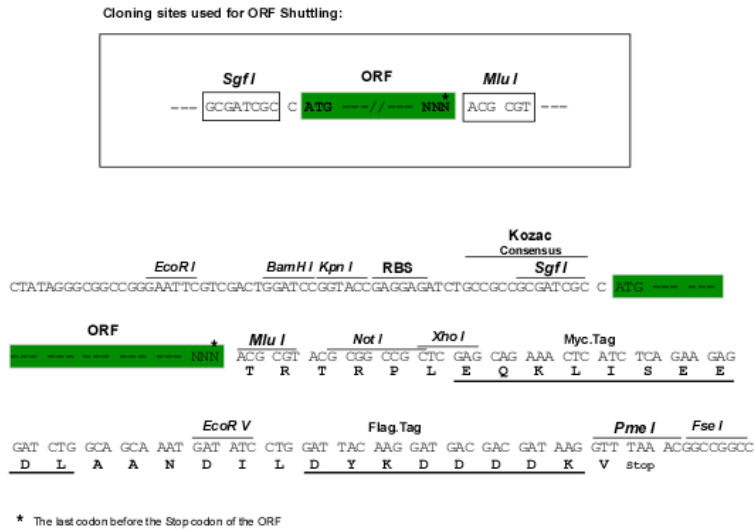
MASRYDRAITVFS PDGHLFQVEYAQEAVKKGSTAVGIRGLTADARVVINRARVEQCQSHKLTVEDPVTVEY  
 ITRFIATLKQKYTQSNRRPFGISALIVGFDDDGISRLYQTDPSGTYHAWKANAIGRSAKTVREFLEKNY  
 TEDAIASDSEAIKLAIKALLEVVQSGGKNIELAIIRRNQPLKMFSAKEVELYVTEIEKEKEEAEEKKSKK  
 SV

TRTRPLEQKLISEEDLAANDILDYKDDDDKV

**Chromatograms:** [https://cdn.origene.com/chromatograms/ja1430\\_b01.zip](https://cdn.origene.com/chromatograms/ja1430_b01.zip)

**Restriction Sites:** SgfI-MluI

**Cloning Scheme:**



**ACCN:** NM\_001025097

**ORF Size:** 636 bp

**OTI Disclaimer:** The molecular sequence of this clone aligns with the gene accession number as a point of reference only. However, individual transcript sequences of the same gene can differ through naturally occurring variations (e.g. polymorphisms), each with its own valid existence. This clone is substantially in agreement with the reference, but a complete review of all prevailing variants is recommended prior to use. [More info](#)

**OTI Annotation:** This clone was engineered to express the complete ORF with an expression tag. Expression varies depending on the nature of the gene.

**Components:** The ORF clone is ion-exchange column purified and shipped in a 2D barcoded Matrix tube containing 10ug of transfection-ready, dried plasmid DNA (reconstitute with 100 ul of water).

**Reconstitution Method:**

1. Centrifuge at 5,000xg for 5min.
2. Carefully open the tube and add 100ul of sterile water to dissolve the DNA.
3. Close the tube and incubate for 10 minutes at room temperature.
4. Briefly vortex the tube and then do a quick spin (less than 5000xg) to concentrate the liquid at the bottom.
5. Store the suspended plasmid at -20°C. The DNA is stable for at least one year from date of shipping when stored at -20°C.

**RefSeq:** [NM\\_001025097.2](#)

**RefSeq Size:** 1713 bp

**RefSeq ORF:** 639 bp

**Locus ID:** 143471

**UniProt ID:** [Q8TAA3](#)

**Cytogenetics:** 18q11.2

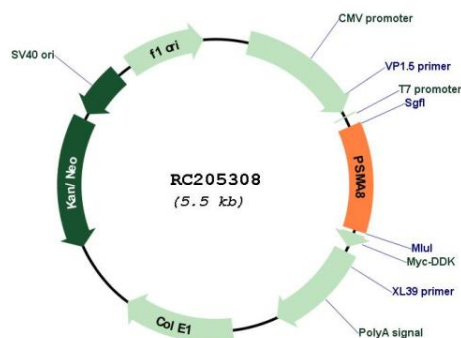
**Protein Families:** Druggable Genome, Protease

**Protein Pathways:** Proteasome

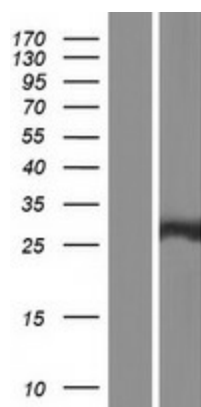
**MW:** 23.5 kDa

**Gene Summary:** Component of the spermatoproteasome, a form of the proteasome specifically found in testis that promotes degradation of histones, thereby participating actively to the exchange of histones during spermatogenesis. The proteasome is a multicatalytic proteinase complex which is characterized by its ability to cleave peptides with Arg, Phe, Tyr, Leu, and Glu adjacent to the leaving group at neutral or slightly basic pH (By similarity).[UniProtKB/Swiss-Prot Function]

### Product images:



Circular map for RC205308



Western blot validation of overexpression lysate (Cat# [LY422586]) using anti-DDK antibody (Cat# [TA50011-100]). Left: Cell lysates from untransfected HEK293T cells; Right: Cell lysates from HEK293T cells transfected with RC205308 using transfection reagent MegaTran 2.0 (Cat# [TT210002]).