

Product datasheet for **RC205306**

MTM1 (NM_000252) Human Tagged ORF Clone

Product data:

Product Type:	Expression Plasmids
Product Name:	MTM1 (NM_000252) Human Tagged ORF Clone
Tag:	Myc-DDK
Symbol:	MTM1
Synonyms:	CNM; MTMX; XLMTM
Mammalian Cell Selection:	Neomycin
Vector:	pCMV6-Entry (PS100001)
E. coli Selection:	Kanamycin (25 ug/mL)



[View online »](#)

ORF Nucleotide Sequence:

>RC205306 ORF sequence
 Red=Cloning site Blue=ORF Green=Tags(s)

TTTTGTAATACGACTCACTATAGGGCGGCCGGAATTCGTCGACTGGATCCGGTACCGAGGAGATCTGCC
 GCC**CGGATCGCC**

ATGGCTTCTGCATCAACTTCTAAATATAATTCACACTCCTTGGAGAATGAGTCTATTAAGAGGACGTCTC
 GAGATGGAGTCAATCGAGATCTCACTGAGGCTGTTCTCGACTTCCAGGAGAAACACTAATCACTGACAA
 AGAAGTTATTTACATATGTCCTTTCAATGGCCCCATTAAGGGAAGAGTTTACATCACAAATTATCGTCTT
 TATTTAAGAAGTTTGGAAACGGATTCTTCTCTAATACTTGATGTTCTCTGGGTGTGATCTCGAGAATTG
 AAAAAATGGGAGGCGGACAAGTAGAGGAGAAAATTCCTATGGTCTAGATATTACTTGTAAAGACATGAG
 AAACCTGAGGTTTCGTTTGAACAGGAAGGCCACAGCAGAAGAGATATGTTTGGATCCTCACGAGATAC
 GCGTTTCCCTGGCTCACAGTCTGCCATTATTTGCATTTTTAAATGAAGAAAAGTTAACGTGGATGGAT
 GGACAGTTTACAATCCAGTGAAGAATACAGGAGGCAGGGCTTGCCCAATCACCATTGGAGAATAACTTT
 TATTAATAAGTGCTATGAGCTCTGTGACACTTACCCTGCTTTTTGGTGGTTCGGTATCGTGCCCTCAGAT
 GATGACCTCCGGAGAGTTGCAACTTTTAGGTCCCGAAATCGAATTCAGTGTGTCATGGATTATCCAG
 AAAATAAGACGGTCATTGTGCGTTGCACTCAGCCTCTTGTGCGGTATGAGTGGGAAACGAAATAAAGATGA
 TGAGAAATATCTCGATGTTATCAGGGAGACTAATAACAAATTTCTAACTCACCATTTATGATGCAAGA
 CCCAGCGTAAATGCAGTGGCCAACAAGGCAACAGGAGGAGGATATGAAAGTATGATGCATATCATAACG
 CCGAACTTTTCTTCTTAGACATTCATAATTCATGTTATGCGGGAACTTTAAAAAAGTGAAGGACAT
 TGTTTATCCTAATGTAGAAGATCTCATTGGTTGCCAGTTTGGAGTCTACTCATTGGTTAGAACATATC
 AAGCTCGTTTTGACAGGAGCCATTCAAGTAGCAGACAAAGTTTCTCAGGGAAGAGTTTCACTGCTTGTGC
 ATTGCAGTGACGGATGGGACAGGACTGCTCAGCTGACATCCTTGCCATGCTGATGTTGGATGCTTCTA
 TAGGAGCATTGAAGGGTTCGAAATACTGGTACAAAAAAAATGGATAAGTTTTGGACATAAAATTTGCATCT
 CGAATAGGTCATGGTGATAAAAAACCACCCGATGCTGACCGTTCTCTATTTTTCTCCAGTTTATTGATT
 GTGTGTGGCAAATGTCAAAACAGTTCCTCAGCTTTTGAATTCATGAACAATTTTTGATTATAATTTT
 GGATCATCTGTATAGTTGCCGATTTGGTACTTTCTATTCAACTGTGAATCTGCTCGAGAAAGACAGAAG
 GTTACAGAAAGGACTGTTTCTTTATGGTCACTGATAAACAGTAATAAAGAAAAATTCAAAAACCCCTTCT
 ATACTAAAGAAATCAATCGAGTTTATATCCAGTTGCCAGTATGCGTCACTTGGAACTCTGGGTGAATTA
 CTACATTAGATGGAACCCAGGATCAAGCAACAACAGCCGAATCCAGTGGAGCAGCGTTACATGGAGCTC
 TTAGCCTTACGCGACGAATACATAAAGCGGCTTGAGGAACTGCAGCTCGCAACTCTGCCAAGCTTCTG
 ATCCCCAACTTACCTCCAGTCTTCGCAAATGATGCCCATGTGCAAACTCACTT

AG**CGGACCG**ACGCGTACGCGGCCGCTCGAGCAGAAACTCATCTCAGAAGAGGATCTGGCAGCAAATGATATCC
 TGGATTACAAGGATGACGACGATAAGGTTTAA

Protein Sequence:

>RC205306 protein sequence
 Red=Cloning site Green=Tags(s)

MASASTSKYNHSHLENESIKRTRSDGVNRDLTEAVPRLPGETLITDKEVIYICPFNGPIKGRVYITNYRL
 YLRSLTDSLLIDVPLGVISRIEKMGGATSRGENSYGLDITCKDMRNLRFALKQEGHSRRDMFEILTRY
 AFPLAHSPLPLFAFLNEEFNVDGWTVYNPVEEYRRQGLPNHHWRITFINCKYELCDTYPALLVVPYRASD
 DDLRRVATFRSRNRIPVLSWIHPENKTVIVRCSQPLVGMMSGKRKNDDEKYLVDVIRETNKQISKLTIDAR
 PSVNAVANKATGGGYESDDAYHNAELFFLDIHNIHVMRESLKKVKDIVYPNVEESHWSLESTHWLEHI
 KLVLTGAIQVADKVSSGKSSVLVHCSGDWDRTAQLTSLAMLMLDSFYRSIEGFEILVQKKWISFGHKFAS
 RIGHGDKNHTDADRSPIFLQFIDCVWQMSKQFPFAFEFNEQFLIILDLHLYSCRFGTFLFNCE SARERQK
 VTERTVSLWLSLINSNKEKFKNPFYTKENRVLYPVASMRLHLELVWNYIIRWNPRIKQQPNPVEQRYMEL
 LALRDEYIKRLEELQLANS AKLSDPPTSPSSPSQMPHVQTHF

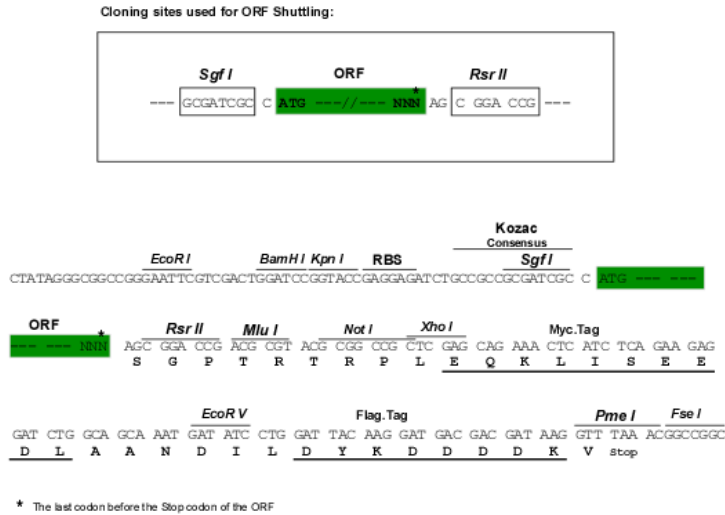
SGP**TRTRPLEQKLI**SEEDLAANDILDYKDDDDKV

Chromatograms:

https://cdn.origene.com/chromatograms/mk6186_e07.zip

Restriction Sites: SgfI-RsrII

Cloning Scheme:



ACCN: NM_000252

ORF Size: 1809 bp

OTI Disclaimer: The molecular sequence of this clone aligns with the gene accession number as a point of reference only. However, individual transcript sequences of the same gene can differ through naturally occurring variations (e.g. polymorphisms), each with its own valid existence. This clone is substantially in agreement with the reference, but a complete review of all prevailing variants is recommended prior to use. [More info](#)

OTI Annotation: This clone was engineered to express the complete ORF with an expression tag. Expression varies depending on the nature of the gene.

Components: The ORF clone is ion-exchange column purified and shipped in a 2D barcoded Matrix tube containing 10ug of transfection-ready, dried plasmid DNA (reconstitute with 100 ul of water).

Reconstitution Method:

1. Centrifuge at 5,000xg for 5min.
2. Carefully open the tube and add 100ul of sterile water to dissolve the DNA.
3. Close the tube and incubate for 10 minutes at room temperature.
4. Briefly vortex the tube and then do a quick spin (less than 5000xg) to concentrate the liquid at the bottom.
5. Store the suspended plasmid at -20°C. The DNA is stable for at least one year from date of shipping when stored at -20°C.

RefSeq: [NM_000252.3](#)

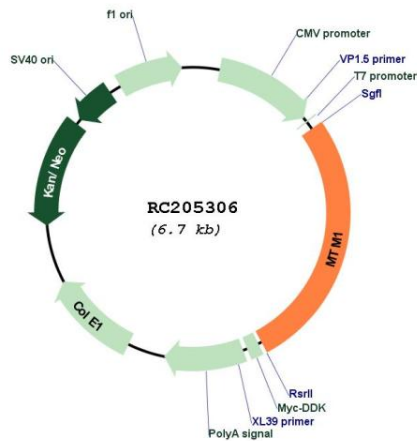
RefSeq Size: 3452 bp

RefSeq ORF: 1812 bp

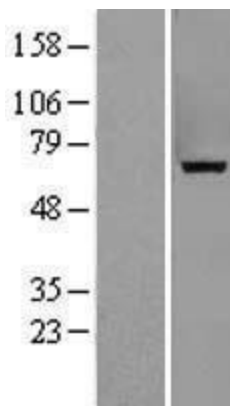
Locus ID: 4534

UniProt ID: [Q13496](#)
Cytogenetics: Xq28
Domains: PTPc_motif, GRAM
Protein Families: Druggable Genome, Phosphatase
MW: 69.9 kDa
Gene Summary: This gene encodes a dual-specificity phosphatase that acts on both phosphotyrosine and phosphoserine. It is required for muscle cell differentiation and mutations in this gene have been identified as being responsible for X-linked myotubular myopathy. [provided by RefSeq, Jul 2008]

Product images:



Circular map for RC205306



Western blot validation of overexpression lysate (Cat# [LY400097]) using anti-DDK antibody (Cat# [TA50011-100]). Left: Cell lysates from untransfected HEK293T cells; Right: Cell lysates from HEK293T cells transfected with RC205306 using transfection reagent MegaTran 2.0 (Cat# [TT210002]).