

Product datasheet for RC205298

MLT5 (TESMIN) (NM_001039656) Human Tagged ORF Clone

Product data:

Product Type:	Expression Plasmids
Product Name:	MLT5 (TESMIN) (NM_001039656) Human Tagged ORF Clone
Tag:	Myc-DDK
Symbol:	TESMIN
Synonyms:	CXCDC2; MTL5; MTLT
Vector:	pCMV6-Entry (PS100001)
E. coli Selection:	Kanamycin (25 ug/mL)
Cell Selection:	Neomycin
ORF Nucleotide Sequence:	>RC205298 ORF sequence Red=Cloning site Blue=ORF Green=Tags(s)

TTTTGTAATACGACTCACTATAGGGCGGCCGGAATTCGTCGACTGGATCCGGTACCGAGGAGATCTGCC
GCC**CGGATCGCC**

ATGGAGGAGGGCCCTCTGCCGGGCGGGCTGCCAGCCCCGAGGATGCGATGGTGACGGAGCTTTAAGCC
CCGAGGGTCCGTTTCGCTTCGGAGAACATCGGCCGAAGGCCCGTGAAGTACGAGGAGGACGAGTTCCA
CGTCTTCAAAGAAGCGTACCTGGGCCCGCGGACCCCAAGGAACCGTCTGCACGCGTTCAACCCCGCG
CTGGGCGCCGACTGCAAGGGCCAGGTCAAGGCCAAGCTCGCGGGGGCGACAGCGACGGCGGGGAGCTCC
TCGGGGAGTACCCCGGGATCCCAGAGCTCAGCGCGCTGGAGGACGTTCGCGCTCCTGCAGGCCCGCAGCC
GCCCGCCTGCAACGTGCACTTTCCTGTCCTCGTGCTACCCGCGCACCCGACGCCGGCGGTGTGCCCTG
GGCGCCTGGTCTGGAAGGAGCCTCCCACCCGGCGTCCGCATGATCCCAGTTGAAATCAAGGAAGCAG
GTGGTACTACTACAAGTAATAATCCGGAAGAAGCAACTTTCGAGAATCTTCTGCTCAGGAATCCTGTTG
CAAGTTCATCGTCCCAGGAAGTAGAGGATGCCTCCTGCTGTTCTTTAAGAAAGATTTCAACCCAATG
GTGATATGCCAATTGAAAGGGGGCACACAAATGCTATGTATAGACAATTCTAGAACAAGAGAAGCAAAAAG
CACTCCATTTGGTTCCTCAGTATCAAGATCAAAATAATTATCTACAGTCAGATGTCCTAAACCAATGAC
TGCTTTAGTAGGGAGATTTTGGCAGCATCAACAAAATTAATCTCATTACACAACAACTTGAGGGAGCC
TTACCATCGGTAGTCAACGGGTCTGCTTTCCCTCGGGATCAACTCTCCAGGACCACAAAAATAACTT
TGGCTGGG

AG**CGGACCG**ACGCGTACGCGCCGCTCGAGCAGAACTCATCTCAGAAGAGGATCTGGCAGCAAATGATATCC
TGGATTACAAGGATGACGACGATAAGGTTTAA



[View online »](#)

Protein Sequence: >RC205298 protein sequence
 Red=Cloning site Green=Tags(s)

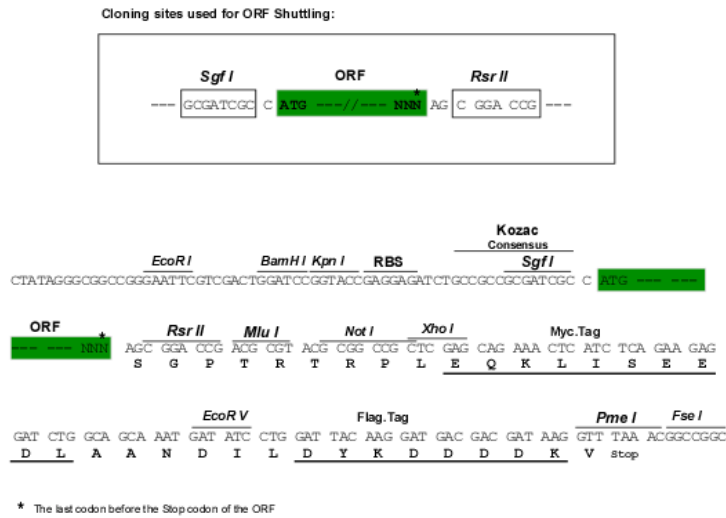
MEEGPLPGLPSPEDAMVTELLSPEGPFASENIGLKAPVKYEEDEFHFVKEAYLGPADPKPEVLHAFNPA
 LGADCKGQVKAKLAGDSDGGELLGEYPGIPELSALEDVALLQAPQPPACNVHFLSSLLPAHRSPAVLPL
 GAWVLEGASHPGVRMIPVEIKEAGGTTTNNPEEATLQNLQAQESCKFPSSQELEDASCCSLKSDSNPM
 VICQLKGGTQMLCIDNSRTRELKALHLVPQYQDQNNYLQSDVVPKPM TALVGRFLPASTKLNLI TQQLGA
 LPSVVNGSAFPSGSTLPGPPKITLAG

SGP TRTRPLEQKL I SEEDLAANDILDYKDDDDKV

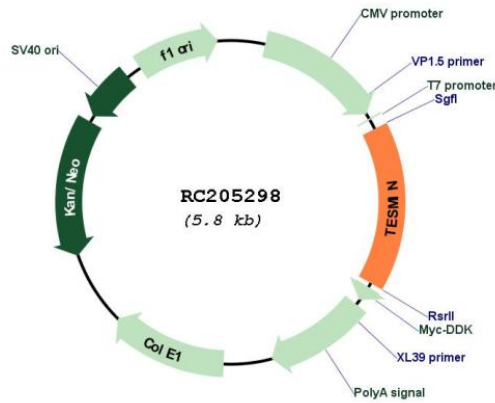
Chromatograms: https://cdn.origene.com/chromatograms/mk6749_a07.zip

Restriction Sites: SgfI-RsrII

Cloning Scheme:



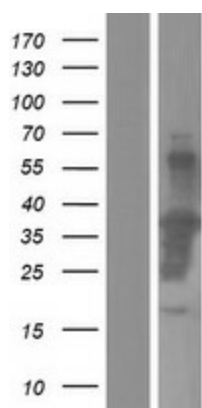
Plasmid Map:



ACCN: NM_001039656

ORF Size:	918 bp
OTI Disclaimer:	The molecular sequence of this clone aligns with the gene accession number as a point of reference only. However, individual transcript sequences of the same gene can differ through naturally occurring variations (e.g. polymorphisms), each with its own valid existence. This clone is substantially in agreement with the reference, but a complete review of all prevailing variants is recommended prior to use. More info
OTI Annotation:	This clone was engineered to express the complete ORF with an expression tag. Expression varies depending on the nature of the gene.
RefSeq:	NM_001039656.1 , NP_001034745.1
RefSeq Size:	3625 bp
RefSeq ORF:	921 bp
Locus ID:	9633
UniProt ID:	Q9Y4I5
Protein Families:	Druggable Genome
MW:	32.3 kDa
Gene Summary:	Metallothionein proteins are highly conserved low-molecular-weight cysteine-rich proteins that are induced by and bind to heavy metal ions and have no enzymatic activity. They may play a central role in the regulation of cell growth and differentiation and are involved in spermatogenesis. This gene encodes a metallothionein-like protein which has been shown to be expressed differentially in mouse testis and ovary. Two transcript variants encoding different isoforms have been found for this gene. [provided by RefSeq, Jul 2008]

Product images:



Western blot validation of overexpression lysate (Cat# [LY417651]) using anti-DDK antibody (Cat# [TA50011-100]). Left: Cell lysates from untransfected HEK293T cells; Right: Cell lysates from HEK293T cells transfected with [RC209063] using transfection reagent MegaTran 2.0 (Cat# [TT210002]).