

Product datasheet for **RC205297**

NAP1L3 (NM_004538) Human Tagged ORF Clone

Product data:

Product Type:	Expression Plasmids
Product Name:	NAP1L3 (NM_004538) Human Tagged ORF Clone
Tag:	Myc-DDK
Symbol:	NAP1L3
Synonyms:	MB20; NPL3
Mammalian Cell Selection:	Neomycin
Vector:	pCMV6-Entry (PS100001)
E. coli Selection:	Kanamycin (25 ug/mL)



[View online »](#)

ORF Nucleotide Sequence:

>RC205297 ORF sequence
 Red=Cloning site Blue=ORF Green=Tags(s)

TTTTGTAATACGACTCACTATAGGGCGGCCGGGAATTCGTCGACTGGATCCGGTACCGAGGAGATCTGCC
 GCC**CGCATCGCC**

ATGGCAGAAGCAGATTTTAAAATGGTCTCGGAACCTGTCGCCATGGGGTTGCCAAGAGGAGATGGCTA
 GCTCGACTAGTGATTCTGGGAAGAATCTGACAGCAGTAGCTCTAGCAGCAGCACTAGTGACAGCAGCAG
 CAGCAGCAGCACTAGTGGCAGCAGCAGCGGCAGCGGCAGCAGCAGCAGCAGCAGCGGCAGCACTAGCAGC
 CGCAGCCGCTTGTATAGAAAAGAAGAGGGTACCTGAGCCTTCCAGAAGGGCGCGGCCGGCCCGTTGGGAA
 CAAATTCGTGGATAGGCTGCCTCAGGCAGTTAGAAATCGTGTGCAAGCGCTTAGAAACATTCAAGATGA
 ATGTGACAAGGTAGATACCCTGTTCTTAAAAGCAATTCATGATCTTGAAGAAAAATGCTGAACTCAAC
 AAGCCTCTGTATGATAGGCGTTTCAAATCATCAATGCAGAATACGAGCCTACAGAAGAAGATGTGAAT
 GGAATTCAGAGGATGAGGAGTTCAGCAGTGATGAGGAGGTGCAGGATAACACCCCTAGTGAATGCCTCC
 CTTAGAGGGTGAAGAAAGAAAACCCCTAAAGAAAACCCAGAGGTGAAAGCTGAAGAGAAGGAAGTTCCT
 AAAGAAATTCCTGAGGTGAAGGATGAAGAAAAGGAAGTTGCTAAAGAAATTAAGTGAAGTAAAGGCTGAAG
 AAAAGCAGATTCTAAAGACTGTATGGAGGCAACCCCTGAAGTAAAGAAAGATCCTAAAGAAAGTCCCCCA
 GGTAAAGGCAGATGATAAAGAACAGCCTAAAGCAACAGAGGCTAAGGCAAGGGCTGCAGTAAAGAGAGACT
 CATAAAGAGTTCCTGAGGAAAGGCTTCAGGACAGTGTAGATCTTAAAGAGCTAGGAAGGGAAAGCCTA
 AAAGAGAAGACCCCTAAAGGCATTCTGACTATTGGCTGATTGTTTTAAAGAAATGTTGACAAGCTCGGGCC
 TATGATTCAGAAGTATGATGAGCCATTCTGAAGTCTTGTGGATGTTAGCCTGAAGTCTCAAACCT
 GGCCAGCCTGAAGTTACACCTTGAATTTCAATTTCTACCAACCCATACTTCAGAAATGAGGTGCTGG
 TGAAGACATATAATAAAGGCAAAACCATGATCAATGATCCCTTCTTTTCTGGGGATGGGAAATGGA
 AGATTGCAAAGGCTGCAAGATAGACTGGAGAAGGAAAAGATGTTACTGTGACAACTACCCAGAGTGC
 ACAACTGCTACTGGAGAAATTGAAATCCAGCCAAGAGTGGTTCCTAATGCATCATTCTTCAACTCTTTA
 GTCCTCTGAGATTCTATGATTGGGAAGCTGGAACCACGAGAAGATGCTATCCTGGATGAGGACTTTGA
 AATTGGGCAGATTTTACATGATAATGTCATCCTGAAATCAATCTATTACTATACTGGAGAAGTCAATGGT
 ACCTACTATCAATTTGGCAAACATTATGAAAACAAGAAATACAGAAAA

ACGCGTACGCGGCCGCTCGAGCAGAAACTCATCTCAGAAGAGGATCTGGCAGCAAATGATATCCTGGATT
 ACAAGGATGACGACGATAAGGTTTAA

Protein Sequence:

>RC205297 protein sequence
 Red=Cloning site Green=Tags(s)

MAEADFKMVSEPVAHGVAEEEMASSTSDSGEESDSSSSSSSTSDSSSSSSTSGSSSGSGSSSSSSSGSTSS
 RSRLYRKKRVPEPSRRARRRPLGTNFVDRLPQAVRNRVQALRNIQDECDKVDTLFLKAIHDLERKYAELN
 KPLYDRRFQIINAEYEPTTEECEWSEDEFSSDEEVQDNTPEMPPLGEEEEENPKENPEVKAEEKEVP
 KEIPEVKDEEKEVAKEITEVKAEEKADSKDMEATPEVKEDPKEVPQVKADDKEQPKATEAKARAAVRET
 HKRVPEERLQDSVDLKRARKGPKREDPKGIPDYWLIVLKNVDKLGPMIQKYDEPILKFLSDVSLKFSK
 GQPVSYTFEFHFLPNPYFRNEVLVKTYIIKAKPDHNDPFFSWGWEIEDCKGCKIDWRRGKDVTVTTTQSR
 TTATGEIEIQPRVVPNASFFNFFSPPEIPMIGKLEPREDAILDEDFEIQILHDNVILKSIYYTGEVNG
 TYYQFGKHYGNKKYRK

TRTRPLEQKLISEEDLAANDILDYKDDDDKV

Chromatograms:

https://cdn.origene.com/chromatograms/mk6314_c11.zip

Restriction Sites:

Sgfl-Mlul

Cloning Scheme:


ACCN: NM_004538

ORF Size: 1518 bp

OTI Disclaimer: The molecular sequence of this clone aligns with the gene accession number as a point of reference only. However, individual transcript sequences of the same gene can differ through naturally occurring variations (e.g. polymorphisms), each with its own valid existence. This clone is substantially in agreement with the reference, but a complete review of all prevailing variants is recommended prior to use. [More info](#)

OTI Annotation: This clone was engineered to express the complete ORF with an expression tag. Expression varies depending on the nature of the gene.

Components: The ORF clone is ion-exchange column purified and shipped in a 2D barcoded Matrix tube containing 10ug of transfection-ready, dried plasmid DNA (reconstitute with 100 ul of water).

- Reconstitution Method:**
1. Centrifuge at 5,000xg for 5min.
 2. Carefully open the tube and add 100ul of sterile water to dissolve the DNA.
 3. Close the tube and incubate for 10 minutes at room temperature.
 4. Briefly vortex the tube and then do a quick spin (less than 5000xg) to concentrate the liquid at the bottom.
 5. Store the suspended plasmid at -20°C. The DNA is stable for at least one year from date of shipping when stored at -20°C.

Note: Plasmids are not sterile. For experiments where strict sterility is required, filtration with 0.22um filter is required.

RefSeq: [NM_004538.6](#)

RefSeq Size: 2761 bp

RefSeq ORF: 1521 bp

Locus ID: 4675

UniProt ID: [Q99457](#)

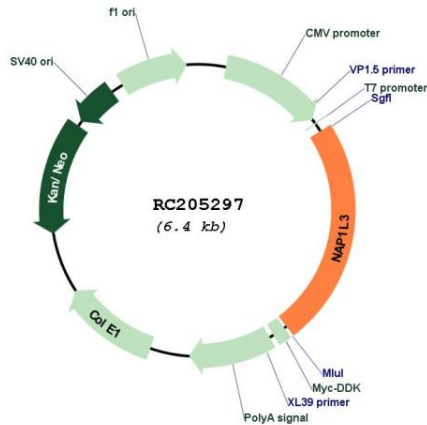
Cytogenetics: Xq21.32

Domains: NAP

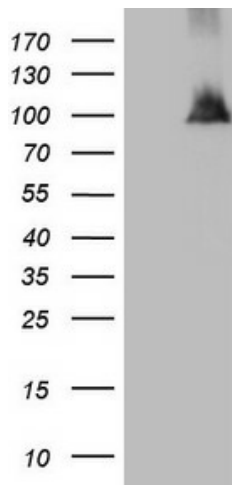
MW: 57.6 kDa

Gene Summary: This gene is intronless and encodes a member of the nucleosome assembly protein (NAP) family. This gene is linked closely to a region of genes responsible for several X-linked cognitive disability syndromes. [provided by RefSeq, Dec 2010]

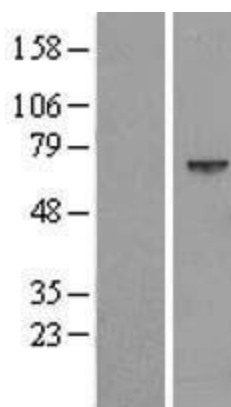
Product images:



Circular map for RC205297



HEK293T cells were transfected with the pCMV6-ENTRY control (Cat# [PS100001], Left lane) or pCMV6-ENTRY NAP1L3 (Cat# RC205297, Right lane) cDNA for 48 hrs and lysed. Equivalent amounts of cell lysates (5 ug per lane) were separated by SDS-PAGE and immunoblotted with anti-NAP1L3 (Cat# [TA808549])(1:2000). Positive lysates [LY417930] (100ug) and [LC417930] (20ug) can be purchased separately from OriGene.



Western blot validation of overexpression lysate (Cat# [LY417930]) using anti-DDK antibody (Cat# [TA50011-100]). Left: Cell lysates from untransfected HEK293T cells; Right: Cell lysates from HEK293T cells transfected with RC205297 using transfection reagent MegaTran 2.0 (Cat# [TT210002]).