

Product datasheet for **RC205290**

Neuroserpin (SERPINI1) (NM_005025) Human Tagged ORF Clone

Product data:

Product Type:	Expression Plasmids
Product Name:	Neuroserpin (SERPINI1) (NM_005025) Human Tagged ORF Clone
Tag:	Myc-DDK
Symbol:	Neuroserpin
Synonyms:	HNS-S1; HNS-S2; neuroserpin; P112
Mammalian Cell Selection:	Neomycin
Vector:	pCMV6-Entry (PS100001)
E. coli Selection:	Kanamycin (25 ug/mL)
ORF Nucleotide Sequence:	>RC205290 representing NM_005025 Red=Cloning site Blue=ORF Green=Tags(s)

TTTTGTAATACGACTCACTATAGGGCGGCCGGAATTCGTCGACTGGATCCGGTACCGAGGAGATCTGCC
GCC**CGATCGCC**

ATGGCTTTCCTTGGACTCTTCTCTTTGCTGGTTCTGCAAAGTATGGCTACAGGGGCCACTTTCCTGAGG
AAGCCATTGCTGACTTGTCAAGTAAATGTATAATCGTCTTAGAGCCACTGGTGAAGATGAAATATTCT
CTTCTCTCCATTGAGTATTGCTCTTGAATGGGAATGATGGAACCTGGGGCCAAGGATCTACCCAGAAA
GAAATCCGCCACTCAATGGGATATGACAGCCTAAAAATGGTGAAGAATTTCTTTCTTGAAGGAGTTTT
CAAACATGGTAACTGCTAAAGAGAGCCAATATGTGATGAAAATTGCCAATTCCTGTTTGTGCAAAATGG
ATTTTCATGTCATGAGGAGTTTTTGCAAATGATGAAAAATATTTAATGCAGCAGTAAATCATGTGGAC
TTCAGTCAAAATGTAGCCGTGGCCAACATCAATAAGTGGGTGGAGAATAACACAAACAATCTGGTGA
AAGATTTGGTATCCCAAGGGATTTTGTGCTGCCACTTATCTGGCCCTCATTAATGCTGTCTATTTCAA
GGGGAACGGAAAGTCGCAGTTTAGGCCTGAAAATACTAGAACCTTTTCTTCACTAAAGATGATGAAAGT
GAAGTCCAAATCCAATGATGTATCAGCAAGGAGAATTTATTATGGGGAATTTAGTGATGGCTCCAATG
AAGCTGGTGGTATCTACCAAGTCTAGAAATACCATATGAAGGAGATGAAATAAGCATGATGCTGGTGT
GTCCAGACAGGAAGTTCCTCTTGTACTCTGGAGCCATTAGTCAAAGCACAGCTGGTTGAAGAATGGGCA
AACTCTGTGAAGAAGCAAAAAGTAGAAGTATACCTGCCAGTTTACAGTGAAGCAGGAAATTTGATTTAA
AAGATGTTTTGAAGGCTCTTGAATAACTGAAATTTTCATCAAAGATGCAAATTTGACAGGCCTCTCTGA
TAATAAGGAGATTTTTCTTTCCAAAGCAATTCACAAGTCTTCTAGAGGTTAATGAAGAAGGCTCAGAA
GCTGCTGTCTCAGGAATGATTGCAATTAGTAGGATGGCTGTGCTGTATCCTCAAGTTATTGTCGACC
ATCCATTTTTCTTTCTTATCAGAAACAGGAGAAGTGGTACAATTCATTCATGGGACGAGTCATGCATCC
TGAACAATGAACACAAGTGGACATGATTCGAAGAACTT

ACGCGTACGCGGCCGCTCGAGCAGAAACTCATCTCAGAAGAGGATCTGGCAGCAAATGATATCCTGGATT
ACAAGGATGACGACGATAAGGTTTAA



Protein Sequence: >RC205290 representing NM_005025
Red=Cloning site Green=Tags(s)

MAFLGLFSLLVLQSMATGATFPPEEAIADLSVNMYNRLRATGEDENILFSPLSIALAMGMELGAQGSTQK
 EIRHSMGYDSLKNGEEFSFLKEFSNMVTAKESQYVMKIANSLFVQNGFHVNEEFQMKKYFNAAVNHVD
 FSQNVAVANYINKWVENNTNLLVKDLVSPRDFDAATYLALINAVYFKGNWKSQFRPENTRTFSFTKDDDES
 EVQIPMMYQQGEFYGFSDGSNEAGGIYQVLEIPYEGDEISMMLVLSRQEVPLATLEPLVKAQLVEEWA
 NSYKKQKVEVYLPRTVTEQEIIDLKDVLLKALGITEIFIKDANLTGLSDNKEIFLSKAIHKSFLVNEEGSE
 AAASVGMIAISRMAVLYPQVIVDHPFFFLIRNRRTGTILFMGRVMHPETMNTSGHDFEEL

TRTRPLEQKLISEEDLAANDILDYKDDDDKV

Chromatograms: https://cdn.origene.com/chromatograms/mg4271_a09.zip

Restriction Sites: SgfI-MluI

Cloning Scheme:



* The last codon before the Stop codon of the ORF

ACCN: NM_005025

ORF Size: 1230 bp

OTI Disclaimer: The molecular sequence of this clone aligns with the gene accession number as a point of reference only. However, individual transcript sequences of the same gene can differ through naturally occurring variations (e.g. polymorphisms), each with its own valid existence. This clone is substantially in agreement with the reference, but a complete review of all prevailing variants is recommended prior to use. [More info](#)

OTI Annotation: This clone was engineered to express the complete ORF with an expression tag. Expression varies depending on the nature of the gene.

Components: The ORF clone is ion-exchange column purified and shipped in a 2D barcoded Matrix tube containing 10ug of transfection-ready, dried plasmid DNA (reconstitute with 100 ul of water).

Reconstitution Method:

1. Centrifuge at 5,000xg for 5min.
2. Carefully open the tube and add 100ul of sterile water to dissolve the DNA.
3. Close the tube and incubate for 10 minutes at room temperature.
4. Briefly vortex the tube and then do a quick spin (less than 5000xg) to concentrate the liquid at the bottom.
5. Store the suspended plasmid at -20°C. The DNA is stable for at least one year from date of shipping when stored at -20°C.

Note: Plasmids are not sterile. For experiments where strict sterility is required, filtration with 0.22um filter is required.

RefSeq: [NM_005025.4](#)

RefSeq Size: 1910 bp

RefSeq ORF: 1233 bp

Locus ID: 5274

UniProt ID: [Q99574](#)

Cytogenetics: 3q26.1

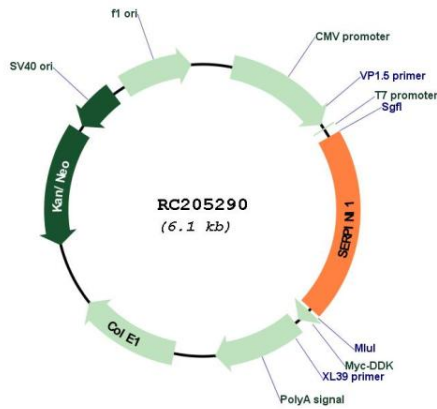
Domains: SERPIN

Protein Families: Druggable Genome, Secreted Protein

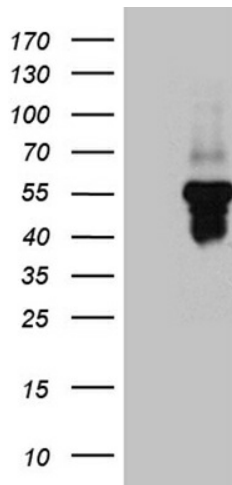
MW: 46.43 kDa

Gene Summary: This gene encodes a member of the serpin superfamily of serine proteinase inhibitors. The protein is primarily secreted by axons in the brain, and preferentially reacts with and inhibits tissue-type plasminogen activator. It is thought to play a role in the regulation of axonal growth and the development of synaptic plasticity. Mutations in this gene result in familial encephalopathy with neuroserpin inclusion bodies (FENIB), which is a dominantly inherited form of familial encephalopathy and epilepsy characterized by the accumulation of mutant neuroserpin polymers. Multiple alternatively spliced variants, encoding the same protein, have been identified. [provided by RefSeq, Jul 2008]

Product images:



Circular map for RC205290



HEK293T cells were transfected with the pCMV6-ENTRY control (Cat# [PS100001], Left lane) or pCMV6-ENTRY SERPINI1 (Cat# RC205290, Right lane) cDNA for 48 hrs and lysed. Equivalent amounts of cell lysates (5 ug per lane) were separated by SDS-PAGE and immunoblotted with anti-SERPINI1 (Cat# [TA812171])(1:2000).