

Product datasheet for **RC205288**

MCSF Receptor (CSF1R) (NM_005211) Human Tagged ORF Clone

Product data:

Product Type:	Expression Plasmids
Product Name:	MCSF Receptor (CSF1R) (NM_005211) Human Tagged ORF Clone
Tag:	Myc-DDK
Symbol:	MCSF Receptor
Synonyms:	BANDDOS; C-FMS; CD115; CSF-1R; CSFR; FIM2; FMS; HDLS; M-CSF-R
Mammalian Cell Selection:	Neomycin
Vector:	pCMV6-Entry (PS100001)
E. coli Selection:	Kanamycin (25 ug/mL)



[View online »](#)

ORF Nucleotide
Sequence:

>RC205288 representing NM_005211
 Red=Cloning site Blue=ORF Green=Tags(s)

TTTTGTAATACGACTCACTATAGGGCGGCCGGGAATTCGTCGACTGGATCCGGTACCGAGGAGATCTGCC
 GCC**CGGATCGCC**

ATGGGCCAGGAGTTCTGCTGCTCTGCTGGTGGCCACAGCTTGGCATGGTCAGGGAATCCCAGTGATAG
 AGCCCAGTGTCCCGAGCTGGTCTGAAGCCAGGAGCAACGGTGACCTTGCATGTGTGGCAATGGCAG
 CGTGGAATGGGATGGCCCCCATCACTCACTGGACCCTGTACTCTGATGGCTCCAGCAGCATCCTCAGC
 ACCAACACGCTACCTTCCAAAAACGGGGACCTATCGCTGCACTGAGCCTGGAGACCCCTGGGAGGCA
 GCGCCGCATCCACCTCTATGTCAAAGACCCTGCCGGCCCTGGAACGTGCTAGCACAGGAGGTGGTCTG
 GTTCGAGGACCAGGACGCACTACTGCCCTGTCTGCTCACAGACCCGGTGTGGAAGCAGGCGTCTCGCTG
 GTGCGTGTGCGTGGCCGGCCCTCATGCCACACCAACTACTCCTTCTCGCCCTGGCATGGCTTACCA
 TCCACAGGGCCAAGTTCATTAGAGCCAGGACTATCAATGCAGTGCCTGATGGGTGGCAGGAAGGTGAT
 GTCATCAGCATCCGGCTGAAAGTGCAGAAAGTATCCCAGGGCCCCAGCCTTGACACTGGTGCCTGCA
 GAGCTGGTGGGATTTCGAGGGGAGGCTGCCAGATCGTGTGCTCAGCCAGCAGCCTTGATGTTAACTTTG
 ATGCTTCTCCTCAACACAACAACACCAAGCTCGCAATCCATCAACAATCTGACTTTCATAATAACCGTTA
 CAAAAAGTCTGACCCTCAACCTCGATCAAGTAGATTTCAAACATGCCGGCAACTACTCTGCGTGGCC
 AGCAACGTGCAGGGCAAGCACTCCACCTCCATGTTCTTCCGGTGGTAGAGAGTGCCACTTGAACCTGA
 GCTCTGAGCAGAACCTCATCCAGGAGGTGACCGTGGGGGAGGGGCTCAACCTCAAAGTATGGTGGAGGC
 CTACCCAGGCCTGCAAGGTTTTAACTGGACCTACCTGGGACCTTTTCTGACCACCAGCCTGAGCCCAAG
 CTTGCTAATGTTACCACCAAGGACACATACAGGCACACCTTACCCTCTCTGCCCCGCTGAAGCCCT
 CTGAGCTGGCCGCTACTCCTTCTGGCCAGAAACCCAGGAGGCTGGAGAGCTCTGACCTTTGCTGCTCAC
 CCTTCGATACCCCCAGAGGTAAGCGTCATATGGACATTCATCAACGGCTCTGGCACCCCTTTGTGTGCT
 GCCTCTGGGTACCCCCAGCCACGTGACATGGCTGCAGTGCAGTGGCCACACTGATAGGTGTGATGAGG
 CCCAAGTGTGCAGGTCTGGGATGACCCATACCCTGAGGTCTGAGCCAGGAGCCCTTCCACAAGGTGAC
 GGTGCAGAGCCTGCTGACTGTTGAGACCTTAGAGCACAACCAAACCTACGAGTGCAGGGCCACAACAGC
 GTGGGGAGTGGCTCTGGGCCTTATACCCATCTCTGCAGGAGCCACACGCATCCCCGGATGAGTTCC
 TCTTACACCAGTGGTGGTGCCTGCATGTCCATCATGGCCTTGTGCTGCTGCTGCTGCTGCTGCTGCTATT
 GTACAAGTATAAGCAGAAGCCCAAGTACCAGTCCGCTGGAAGATCATCGAGAGCTATGAGGGCAACAGT
 TATACTTTCATCGACCCACGCAGTGCCTTACAACGAGAAGTGGGAGTCCCCCGGAACAACCTGCAGT
 TTGGTAAGACCCTCGGAGCTGGAGCCTTTGGGAAGGTGGTGGAGGCCACGGCCTTTGGTCTGGGCAAGGA
 GGATGCTGTCTGAAGGTGGCTGTGAAGATGCTGAAGTCCACGGCCCATGCTGATGAGAAGGAGTCCCTC
 ATGTCCGAGCTGAAGATCATGAGCCACCTGGGCCAGCAGAGAACATCGTCAACCTTCTGGGAGCCTGTA
 CCCATGGAGGCCCTGACTGGTCATCACGGAGTACTGTTGCTATGGCGACCTGCTCAACTTCTGCGAAG
 GAAGGCTGAGGCCATGCTGGGACCCAGCCTGAGCCCCGGCCAGGACCCCGAGGGAGGCGTCGACTATAAG
 AACATCCACCTCGAGAAGAAATATGTCCGAGGGACAGTGGCTTCTCCAGCCAGGTGTGGACACCTATG
 TGGAGATGAGGCCTGTCTCCACTTCTCAAATGACTCCTTCTGAGCAAGACCTGGACAAGGAGGATGG
 ACGGCCCTGGAGCTCCGGGACCTGCTTCACTTCTCCAGCCAAGTAGCCAGGGCATGGCCTTCTCGCT
 TCCAAGAATTGCATCCACCGGGACGTGGCAGCGGTAACGTGCTGTTGACCAATGGTCATGTGGCCAAGA
 TTGGGACTTCGGGCTGGCTAGGACATCATGAATGACTCCAACACTACATTGTCAAGGGCAATGCCCGCT
 GCCTGTGAAGTGGATGGCCCCAGAGAGCATCTTTGACTGTGTCTACACGGTTCAGAGCGACGTCTGGTCC
 TATGGCATCCTCCTGAGGATCTTCTCACTTGGGCTGAATCCCTACCCTGGCATCCTGGTGAACAGCA
 AGTTCTATAAACTGGTGAAGGATGGATACCAAATGGCCAGCCTGCATTTGCCCAAAGAATATATACAG
 CATCATGCAGGCCTGCTGGCCTTGGAGCCACCCACAGACCCACCTTCCAGCAGATCTGCTCCTCCTT
 CAGGAGCAGGCCAAGAGGACAGGAGAGAGCGGGACTATACCAATCTGCCGAGCAGCAGCAGAAGCGGTG
 GCAGCGCAGCAGCAGCAGTGTGAGCTGGAGGAGGAGAGCTAGTGAGCACCTGACCTGCTGCGAGCAAGG
 GGATATCGCCAGCCCTGCTGCAGCCAAACAATATCAGTTCTGC

ACGCGTACGCGGCCGCTCGAGCAGAAACTCATCTCAGAAGAGGATCTGGCAGCAAATGATATCCTGGATT
 ACAAGGATGACGACGATAAGGTTTAA

Protein Sequence: >RC205288 representing NM_005211
 Red=Cloning site Green=Tags(s)

MGPGVLLLLLVATAWHGQGIPVIEPSVPELVVVKPGATVTLRCVGNQSVVEWDGPPSPHWLTYSDGSSSILS
 TNNATFQNTGTyrCTEPGDPLGGSAAIHLVYKDPARPWNVLAQEVVVFEDQDALLPCLLTDPVLEAGVSL
 VRVGRPLMRHTNYSFSPWHGFTIHRAKFIQSQDYQCSALMGRKVMYSISIRLKVQKVIQPPALTLVPA
 ELVRIRGEAAQIVCSASSVDVNFDFVFLQHNNTKLAIHQQSDFHNNRYQKVLTLNLDQVDFQHAGNYSQVA
 SNVQGGKSTSMFFRVVESAYLNLSSSEQNLIQEVTVGEGLNLKVMVEAYPGLQGFNWTYLGPFSDHQPEPK
 LANVTTKDtyRHFTLSLPRPKPSEAGRYSFLARNPGWRALTFELTLRYPPPEVSVIWFINGSGTLLCA
 ASGYQPQNVTLQCSGHTDRCDQAQVLQVWDDPYPEVLSQEPFHKVTVQSLLTVETLEHNQTYECRAHNS
 VGSWSWAFIPISAGAHTHPDEFLLFTPVVACMSIMALLLLLLLLLLLKYKQKPKYQVRWKIIESYEGNS
 YTFIDPTQLPYNEKWEFPRNQLQFGKTLGAGAFGKVVVEATAFGLGKEDAVLKVAVKMLKSTAHADEKESL
 MSELKIMSHLGQHENIVNLLGACTHGGPVLVITEYCCYGDLLNFLRRKAEAMLGPSLSPGQDPEGGVDYK
 NIHLEKKYVRRDSGFSSQGVDTYVEMRPVSTSSNDSFSEQDLKEDGRPLELRDLLHFSSQVAQGMFLA
 SKNCIHRDVAARNVLLTNGHVAKIGDFGLARDIMNDSNYIVKGNARLPVKWMAPEIFDCVYTVQSDVWS
 YGILLWEIFSLGLNPYPGILVNSKFYKLVKDGQMAQPAFAPKNIYSIMQACWALEPTHRPTFQQICCSFL
 QEQAQEDRRERDYTNLPSSRSRSGSGSSSSELEEESSSEHLTCCEQGDIAQPLLQPNNYQFC

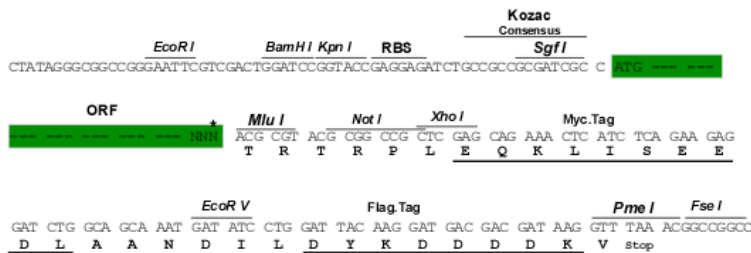
TRTRPLEQKLISEEDLAANDILDYKDDDDKV

Chromatograms: https://cdn.origene.com/chromatograms/mg2642_d02.zip

Restriction Sites: SgfI-MluI

Cloning Scheme:

Cloning sites used for ORF Shuttling:



* The last codon before the Stop codon of the ORF

ACCN: NM_005211

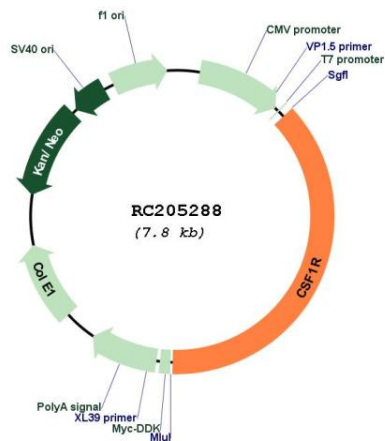
ORF Size: 2916 bp

OTI Disclaimer:	The molecular sequence of this clone aligns with the gene accession number as a point of reference only. However, individual transcript sequences of the same gene can differ through naturally occurring variations (e.g. polymorphisms), each with its own valid existence. This clone is substantially in agreement with the reference, but a complete review of all prevailing variants is recommended prior to use. More info
OTI Annotation:	This clone was engineered to express the complete ORF with an expression tag. Expression varies depending on the nature of the gene.
Components:	The ORF clone is ion-exchange column purified and shipped in a 2D barcoded Matrix tube containing 10ug of transfection-ready, dried plasmid DNA (reconstitute with 100 ul of water).
Reconstitution Method:	<ol style="list-style-type: none"> 1. Centrifuge at 5,000xg for 5min. 2. Carefully open the tube and add 100ul of sterile water to dissolve the DNA. 3. Close the tube and incubate for 10 minutes at room temperature. 4. Briefly vortex the tube and then do a quick spin (less than 5000xg) to concentrate the liquid at the bottom. 5. Store the suspended plasmid at -20°C. The DNA is stable for at least one year from date of shipping when stored at -20°C.
Note:	Plasmids are not sterile. For experiments where strict sterility is required, filtration with 0.22um filter is required.
RefSeq:	NM_005211.3 , NP_005202.2
RefSeq Size:	3985 bp
RefSeq ORF:	2919 bp
Locus ID:	1436
UniProt ID:	P07333
Cytogenetics:	5q32
Domains:	pkinase, TyrKc, S_TKc, ig, IGc2, IG
Protein Families:	Druggable Genome, Protein Kinase, Transmembrane
Protein Pathways:	Cytokine-cytokine receptor interaction, Endocytosis, Hematopoietic cell lineage, Pathways in cancer
MW:	107.8 kDa

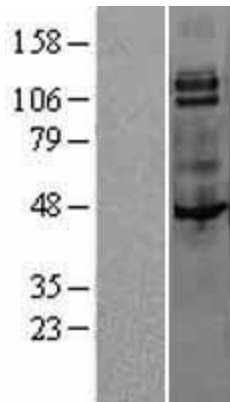
Gene Summary:

The protein encoded by this gene is the receptor for colony stimulating factor 1, a cytokine which controls the production, differentiation, and function of macrophages. This receptor mediates most if not all of the biological effects of this cytokine. Ligand binding activates the receptor kinase through a process of oligomerization and transphosphorylation. The encoded protein is a tyrosine kinase transmembrane receptor and member of the CSF1/PDGF receptor family of tyrosine-protein kinases. Mutations in this gene have been associated with a predisposition to myeloid malignancy. The first intron of this gene contains a transcriptionally inactive ribosomal protein L7 processed pseudogene oriented in the opposite direction. Alternative splicing results in multiple transcript variants. Expression of a splice variant from an LTR promoter has been found in Hodgkin lymphoma (HL), HL cell lines and anaplastic large cell lymphoma. [provided by RefSeq, Mar 2017]

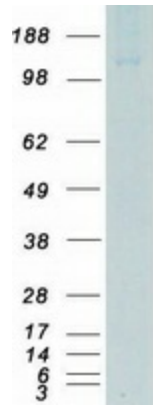
Product images:



Circular map for RC205288



Western blot validation of overexpression lysate (Cat# [LY401594]) using anti-DDK antibody (Cat# [TA50011-100]). Left: Cell lysates from untransfected HEK293T cells; Right: Cell lysates from HEK293T cells transfected with RC205288 using transfection reagent MegaTran 2.0 (Cat# [TT210002]).



Coomassie blue staining of purified CSF1R protein (Cat# [TP305288]). The protein was produced from HEK293T cells transfected with CSF1R cDNA clone (Cat# RC205288) using MegaTran 2.0 (Cat# [TT210002]).