

Product datasheet for **RC205282**

EDIL3 (NM_005711) Human Tagged ORF Clone

Product data:

| | |
|--------------------|--|
| Product Type: | Expression Plasmids |
| Product Name: | EDIL3 (NM_005711) Human Tagged ORF Clone |
| Tag: | Myc-DDK |
| Symbol: | EDIL3 |
| Synonyms: | DEL1 |
| Vector: | pCMV6-Entry (PS100001) |
| E. coli Selection: | Kanamycin (25 ug/mL) |
| Cell Selection: | Neomycin |



[View online »](#)

ORF Nucleotide Sequence:

>RC205282 ORF sequence
 Red=Cloning site Blue=ORF Green=Tags(s)

TTTTGTAATACGACTCACTATAGGGCGGCCGGAATTCGTCGACTGGATCCGGTACCGAGGAGATCTGCC
 GCC**GCGATCGCC**

ATGAAGCGCTCGGTAGCCGCTCTGGCTCTTGGTCGGGCTCAGCCTCAGTGTCCCCAGTTCGGCAAAGGTG
 ATATTTGTGATCCCAATCCATGTGAAAATGGAGGTATCTGTTGCCAGGATTGGCTGATGGTTCCTTTTC
 CTGTGAGTGTCCAGATGGCTTCACAGACCCCAACTGTTCTAGTGTGTGGAGTTGCATCAGATGAAGAA
 GAACCAACTTCAGCAGGTCCCTGCACTCCTAATCCATGCCATAATGGAGGAACCTGTGAAAATAAGTGAAG
 CATACCGAGGGGATACATTCATAGGCTATGTTTGTAAATGTCCCCGAGGATTTAATGGGATTCAGTGTCA
 GCACAACATAAATGAATGCGAAGTTGAGCCTTGCAAAAATGGTGAATATGTACAGATCTTGTGCTAAC
 TATTCCTGTGAGTGCCAGGCGAATTTATGGGAAGAAATGTCAATACAAATGCTCAGGCCCACTGGGAA
 TTGAAGGTGGAATTATATCAAACCAGCAAATCACAGCTTCTCTACTCACCGAGCTCTTTTGGACTCCA
 AAAATGGTATCCCTACTATGCACGTCTTAATAAGAAGGGGCTTATAAATGCGTGGACAGCTGCAGAAAAT
 GACAGATGGCCGTGGATTAGATAAATTTGCAAAGGAAAATGAGAGTTACTGGTGTGATTACCCAAGGAG
 CCAAGAGGATTGGAAGCCAGAGTATATAAAATCCTACAAAATTCCTACAGTAATGATGAAAAGACTTG
 GGCAATGTACAAAGTAAAGGCACCAATGAAGACATGGTGTTCGTGGAAACATTGATAACAACACTCCA
 TATGCTAACTCTTTCACACCCCCATAAAAGCTCAGTATGTAAGACTCTATCCCCAAGTTTGTGCGAAGAC
 ATTGCACTTTGCGAATGGAACCTCTTGGCTGTGAACTGTGCGGTTGTTCTGAGCCTCTGGGTATGAAATC
 AGGACATATAAAGACTATCAGATCACTGCCTCCAGCATCTTCAGAACGCTCAACATGGACATGTTCACT
 TGGGAACCAAGGAAAGCTCGGCTGGACAAGCAAGGCAAAGTGAATGCCTGGACCTCTGGCCACAATGACC
 AGTCACAATGGTTACAGGTGGATCTTCTTGTCCAACCAAGGACTGAGTGGCATCATTACACAAGGACTAA
 AGATTTTGGTCATGTACAGTTTGTGGCTCCTACAAACTGGCTTACAGCAATGATGGAGAACAACACTGGAT
 GTATACCAGGATGAAAAGCAAAGAAAAGATAAGGTTTTCCAGGAAAATTTGACAATGACACTCACAGAA
 AAAATGTCATCGACCCTCCATCTATGCACGACACATAAGAATCCTTCTTGGTCTGGTACGGGAGGAT
 CACATTGCGGTCAGAGCTGCTGGCTGCACAGAGGAGGAA

ACGCGTACGCGGCCGCTCGAGCAGAAACTCATCTCAGAAGAGGATCTGGCAGCAAATGATATCCTGGATT
 ACAAGGATGACGACGATAAGGTTTAA

Protein Sequence:

>RC205282 protein sequence
 Red=Cloning site Green=Tags(s)

MKRSVAVWLLVGLSLSVPQFGKGDICDPNCPENGGICLPLGLADGFSCECPDGFDPNCSVVVEVASDEE
 EPTSAGPCTPNPCHNGGTCEISEAYRGDTFIGYVCKCPRGFNGIHCQHNINECEVEPCKNGGICTDLVAN
 YSCECPGEFMGRNCQYKCSGPLGIEGGIISNQITASSTHRALFGLQKWYPYARLNKKGLINAWTAAEN
 DRWPWIQINLQRKMRVTGVITQGAKRIGSPEYIKSYKIAYSNDGKTWAMYKVKGTNEDMVFGRNIDNNT
 YANSFTPPIKAQYVRLYPQVCRRHCTLRMELLGCELSGCSEPLGMKSGHIQDYQITASSIFRTLNDMFT
 WEPRKARLDKQGVNAWTSGHNDQSQWLQVDLLVPTKVTGIITQGAKDFGHVQFVGSYKLAYSNDGEHWT
 VYQDEKQRKDKVFQGNFDNDTHRKNVIDPPIYARHIRILPWSWYGRITLRSSELLGCTEEE

TRTRPLEQKLISEEDLAANDILDYKDDDDKV

Chromatograms:

https://cdn.origene.com/chromatograms/mk6196_a02.zip

Restriction Sites:

Sgfl-Mlul

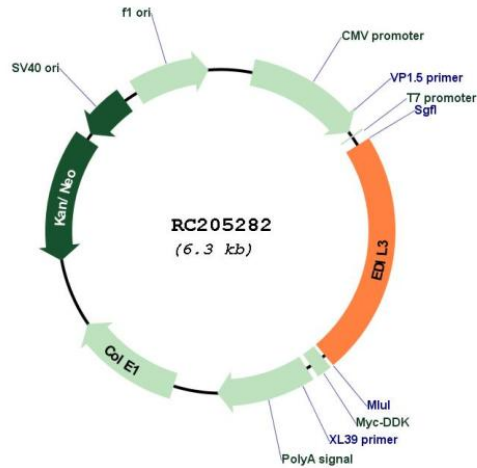
Cloning Scheme:

Cloning sites used for ORF Shuttling:



* The last codon before the Stop codon of the ORF

Plasmid Map:



ACCN: NM_005711

ORF Size: 1440 bp

OTI Disclaimer: The molecular sequence of this clone aligns with the gene accession number as a point of reference only. However, individual transcript sequences of the same gene can differ through naturally occurring variations (e.g. polymorphisms), each with its own valid existence. This clone is substantially in agreement with the reference, but a complete review of all prevailing variants is recommended prior to use. [More info](#)

OTI Annotation: This clone was engineered to express the complete ORF with an expression tag. Expression varies depending on the nature of the gene.

Components: The ORF clone is ion-exchange column purified and shipped in a 2D barcoded Matrix tube containing 10ug of transfection-ready, dried plasmid DNA (reconstitute with 100 ul of water).

Reconstitution Method:

1. Centrifuge at 5,000xg for 5min.
2. Carefully open the tube and add 100ul of sterile water to dissolve the DNA.
3. Close the tube and incubate for 10 minutes at room temperature.
4. Briefly vortex the tube and then do a quick spin (less than 5000xg) to concentrate the liquid at the bottom.
5. Store the suspended plasmid at -20°C. The DNA is stable for at least one year from date of shipping when stored at -20°C.

RefSeq: [NM_005711.2](#)

RefSeq Size: 4771 bp

RefSeq ORF: 1443 bp

Locus ID: 10085

UniProt ID: [O43854](#)

Cytogenetics: 5q14.3

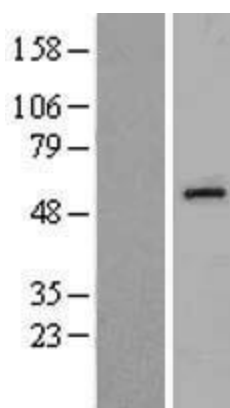
Domains: F5_F8_type_C, EGF_CA, EGF, EGF

Protein Families: Druggable Genome, Secreted Protein

MW: 53.8 kDa

Gene Summary: The protein encoded by this gene is an integrin ligand. It plays an important role in mediating angiogenesis and may be important in vessel wall remodeling and development. It also influences endothelial cell behavior. [provided by RefSeq, Jul 2008]

Product images:





Coomassie blue staining of purified EDIL3 protein (Cat# [TP305282]). The protein was produced from HEK293T cells transfected with EDIL3 cDNA clone (Cat# RC205282) using MegaTran 2.0 (Cat# [TT210002]).