

Product datasheet for RC205279

LANCL1 (NM_006055) Human Tagged ORF Clone

Product data:

Product Type:	Expression Plasmids
Product Name:	LANCL1 (NM_006055) Human Tagged ORF Clone
Tag:	Myc-DDK
Symbol:	LANCL1
Synonyms:	GPR69A; p40
Mammalian Cell Selection:	Neomycin
Vector:	pCMV6-Entry (PS100001)
E. coli Selection:	Kanamycin (25 ug/mL)
ORF Nucleotide Sequence:	>RC205279 ORF sequence Red=Cloning site Blue=ORF Green=Tags(s)

TTTTGTAATACGACTCACTATAGGGCGCCGGGAATTCGTCGACTGGATCCGGTACCGAGGAGATCTGCC
GCC**CGATCGCC**

ATGGCTCAAAGGGCCTCCCGAATCCTTATGCTGATTATAACAAATCCCTGGCCGAAGGCTACTTTGATG
CTGCCGGGAGGCTGACTCCTGAGTTCTCACAACGCTTGACCAATAAGATTCGGGAGCTTCTTCAGCAAAT
GGAGAGAGGCCTGAAATCAGCAGACCCTCGGGATGGCACCAGTTACTGGCTGGCAGGTATTGCTGTG
CTTTACTTACATCTTTATGATGATTTGGGACCCTGCCTACCTACAGTTAGCACATGGCTATGTAAGC
AAAGTCTGAAGTCTTAACCAAGCGCTCCATCACCTTCCTTTGTGGGGATGCAGGCCCTGGCAGTGGC
CGCTGTGCTATATCACAAGATGAACAATGAGAAGCAGGCAGAAGATTGCATCACACGGCTAATTCACCTA
AATAAGATTGATCCTCATGCTCCAAATGAAATGCTCTATGGGCGAATAGGCTACATCTATGCTCTCTTT
TTGTCAATAAGAACTTTGGAGTGGAAAAGATTCCTCAAAGCCATATTCAGCAGATTTGTGAAACAATTTT
AACCTCTGGAGAAAACCTAGCTAGGAAGAGAACTTCACGGCAAAGTCTCCACTGATGTATGAATGGTAC
CAGGAATATTATGTAGGGGCTGCTATGGCCTGGCTGGAATTTATTACTACCTGATGCAGCCAGCCTTC
AAGTGAGCCAAGGAAGTTACATAGTTTGGTCAAGCCCAGTGTAGACTACGCTGCCAGCTGAAATTCCT
TTCTGGCAATTACCCTCCATGTATAGGTGATAATCGAGATCTGCTTGCCATTGGTGCCATGGCGCCCT
GGGTAATCTACATGCTCATCCAGGCCTATAAGGTATTCAGAGAGGAAAGTATCTCTGTGATGCCATC
AGTGTGCTGATGTGATCTGGCAATATGGGTTGCTGAAGAAGGGATATGGGCTGTGCCACGGTTCTGCAGG
GAATGCCTATGCCTTCTGACACTCTAACCTCACACAGGACATGAAGTACCTGTATAGGGCCTGTAAG
TTTGCTGAATGGTCTTAGAGTATGGAGAACATGGATGCAGAACCAGACACCCCTTTCTCTCTTTG
AAGGAATGGCTGGAACAATATATTTCTGGCTGACCTGCTAGTCCCACAAAAGCCAGGTTCCCTGCATT
TGAACTC

ACGCGTACGCGGCCGCTCGAGCAGAACTCATCTCAGAAGAGGATCTGGCAGCAAATGATATCTGGATT
ACAAGGATGACGACGATAAGGTTTAA



[View online »](#)

Protein Sequence: >RC205279 protein sequence
Red=Cloning site Green=Tags(s)

MAQRAFNPYADYNKSLAEGYFDAAGRLTPEFSQRLTNKIRELLQOMERGLKSADPRDGTGYTGWAGIAV
 LYLHLVDVFGDPAYLQLAHGYVKQSLNCLTKRSITFLCGDAGPLAVAVALYHKMNEKQAEDCITRLIHL
 NKIDPHAPNEMLYGRIGYIYALLFVNKNFVGEKIPQSHIQICETILTSGENLARKRNFTAKSPLMYEWY
 QEYYVGAAGHLAGIYYLMPQLQVVSQGLHSLVKPSVDYVCQLKFPVSGNYPPCIGDNRDLLVHWCHGAP
 GVIYMLIQAYKVFREEKYLCDAVYQCADVIWQYGLLKKGYGLCHGSAGNAYAFLLTYNLTQDMKYLYRACK
 FAEWCLEYGEHGCRTPDTPFSLFEGMAGTIYFLADLLVPTKARFPAPFL

TRTRPLEQKLISEEDLAANDILDYKDDDDKV

Chromatograms: https://cdn.origene.com/chromatograms/mk6072_b06.zip

Restriction Sites: SgfI-MluI

Cloning Scheme:



ACCN: NM_006055

ORF Size: 1197 bp

OTI Disclaimer: The molecular sequence of this clone aligns with the gene accession number as a point of reference only. However, individual transcript sequences of the same gene can differ through naturally occurring variations (e.g. polymorphisms), each with its own valid existence. This clone is substantially in agreement with the reference, but a complete review of all prevailing variants is recommended prior to use. [More info](#)

OTI Annotation: This clone was engineered to express the complete ORF with an expression tag. Expression varies depending on the nature of the gene.

Components: The ORF clone is ion-exchange column purified and shipped in a 2D barcoded Matrix tube containing 10ug of transfection-ready, dried plasmid DNA (reconstitute with 100 ul of water).

Reconstitution Method:

1. Centrifuge at 5,000xg for 5min.
2. Carefully open the tube and add 100ul of sterile water to dissolve the DNA.
3. Close the tube and incubate for 10 minutes at room temperature.
4. Briefly vortex the tube and then do a quick spin (less than 5000xg) to concentrate the liquid at the bottom.
5. Store the suspended plasmid at -20°C. The DNA is stable for at least one year from date of shipping when stored at -20°C.

Note: Plasmids are not sterile. For experiments where strict sterility is required, filtration with 0.22um filter is required.

RefSeq: [NM_006055.3](#)

RefSeq Size: 4620 bp

RefSeq ORF: 1200 bp

Locus ID: 10314

UniProt ID: [O43813](#)

Cytogenetics: 2q34

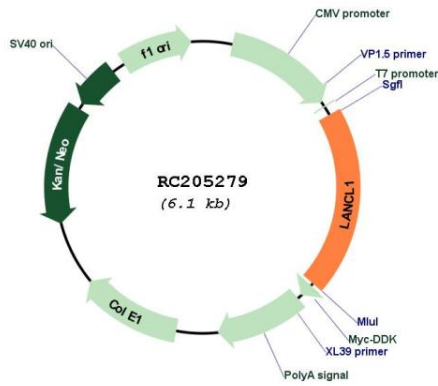
Domains: LANC_like

Protein Families: Druggable Genome

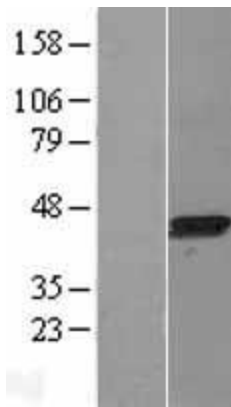
MW: 45.3 kDa

Gene Summary: This gene encodes a loosely associated peripheral membrane protein related to the LanC family of bacterial membrane-associated proteins involved in the biosynthesis of antimicrobial peptides. This protein may play a role as a peptide-modifying enzyme component in eukaryotic cells. Previously considered a member of the G-protein-coupled receptor superfamily, this protein is now in the LanC family. Multiple alternatively spliced variants, encoding the same protein, have been identified. [provided by RefSeq, Nov 2008]

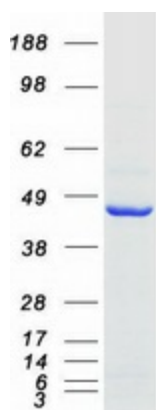
Product images:



Circular map for RC205279



Western blot validation of overexpression lysate (Cat# [LY427929]) using anti-DDK antibody (Cat# [TA50011-100]). Left: Cell lysates from untransfected HEK293T cells; Right: Cell lysates from HEK293T cells transfected with [RC227716] using transfection reagent MegaTran 2.0 (Cat# [TT210002]).



Coomassie blue staining of purified LANCL1 protein (Cat# [TP305279]). The protein was produced from HEK293T cells transfected with LANCL1 cDNA clone (Cat# RC205279) using MegaTran 2.0 (Cat# [TT210002]).