

Product datasheet for **RC205274**

INSIG2 (NM_016133) Human Tagged ORF Clone

Product data:

Product Type:	Expression Plasmids
Product Name:	INSIG2 (NM_016133) Human Tagged ORF Clone
Tag:	Myc-DDK
Symbol:	INSIG2
Synonyms:	INSIG-2
Mammalian Cell Selection:	Neomycin
Vector:	pCMV6-Entry (PS100001)
E. coli Selection:	Kanamycin (25 ug/mL)
ORF Nucleotide Sequence:	>RC205274 ORF sequence Red=Cloning site Blue=ORF Green=Tags(s)

TTTTGTAATACGACTCACTATAGGGCGCCGGGAATTCGTCGACTGGATCCGGTACCGAGGAGATCTGCC
GCC**CGATCGCC**

ATGGCAGAAGGAGAGACAGAGTCACCTGGGCCAAAAAGTGTGGCCATATATTTTCATCTGTCACTAGCC
AGAGTGTGAACCTTGATGATTCGAGGAGTAGTGCTATTTTTTATTGGAGATTTCTTGCATTAGTGTTAAA
TTTACTTCAGATTCAGAGAAATGTGACGCTCTTCCACCTGATGTGATTGCAAGCATCTTTCTTCTGCA
TGGTGGGTACCCCATGCTGTGGCACGGCTTCAGCTGTGATTGGGTTATTATACCCCTGCATTGACAGAC
ATCTAGGAGAACCACATAAATTTAAAAGAGAGTGGTCCAGTGTAATGCGGTGTGTAGCAGTCTTTGTTGG
TATAAATCATGCCAGTGCTAAAGTGGATTCGATAACAACATACAGTTGTCTCTCACACTGGCTGCACTA
TCCATTGGACTGTGGTGGACTTTTGATAGATCTAGAAGTGGTTTTGGCCTTGGAGTAGGAATTGCCTTCT
TGGCAACTGTGGTCACTCAACTGCTAGTATATAATGGTGTTTACCAATATACATCTCCAGATTTCTCTA
TGTTGTTCTTGGTTACCATGTATTTTTTGGCTGGAGGCATAACAATGGGAAACATTGGTGCAGAACTG
GCAATGTACGAATGTAAGTTATCGCAGAAAAATCTCATCAGGAA

ACGCGTACGCGGCGCTCGAGCAGAACTCATCTCAGAAGAGGATCTGGCAGCAAATGATATCTGGATT
ACAAGGATGACGACGATAAGGTTTAA



[View online »](#)

Reconstitution Method:

1. Centrifuge at 5,000xg for 5min.
2. Carefully open the tube and add 100ul of sterile water to dissolve the DNA.
3. Close the tube and incubate for 10 minutes at room temperature.
4. Briefly vortex the tube and then do a quick spin (less than 5000xg) to concentrate the liquid at the bottom.
5. Store the suspended plasmid at -20°C. The DNA is stable for at least one year from date of shipping when stored at -20°C.

Note: Plasmids are not sterile. For experiments where strict sterility is required, filtration with 0.22um filter is required.

RefSeq: [NM_016133.4](#)

RefSeq Size: 2592 bp

RefSeq ORF: 678 bp

Locus ID: 51141

UniProt ID: [Q9Y5U4](#)

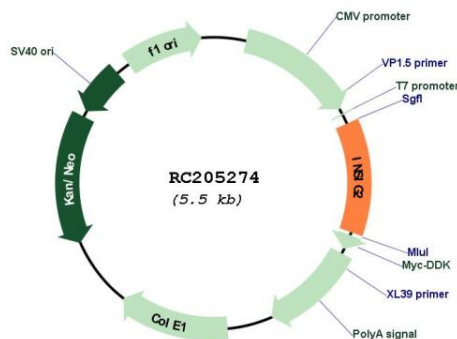
Cytogenetics: 2q14.1-q14.2

Protein Families: Transmembrane

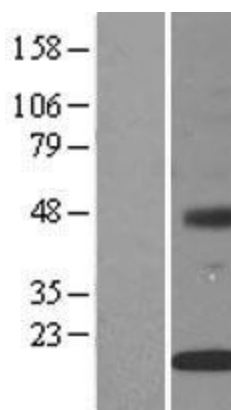
MW: 24.8 kDa

Gene Summary: The protein encoded by this gene is highly similar to the protein product encoded by gene INSIG1. Both INSIG1 protein and this protein are endoplasmic reticulum proteins that block the processing of sterol regulatory element binding proteins (SREBPs) by binding to SREBP cleavage-activating protein (SCAP), and thus prevent SCAP from escorting SREBPs to the Golgi. [provided by RefSeq, Jul 2008]

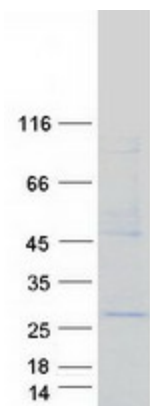
Product images:



Circular map for RC205274



Western blot validation of overexpression lysate (Cat# [LY402504]) using anti-DDK antibody (Cat# [TA50011-100]). Left: Cell lysates from untransfected HEK293T cells; Right: Cell lysates from HEK293T cells transfected with RC205274 using transfection reagent MegaTran 2.0 (Cat# [TT210002]).



Coomassie blue staining of purified INSIG2 protein (Cat# [TP305274]). The protein was produced from HEK293T cells transfected with INSIG2 cDNA clone (Cat# RC205274) using MegaTran 2.0 (Cat# [TT210002]).