

Product datasheet for **RC205268**

USP16 (NM_001001992) Human Tagged ORF Clone

Product data:

Product Type:	Expression Plasmids
Product Name:	USP16 (NM_001001992) Human Tagged ORF Clone
Tag:	Myc-DDK
Symbol:	USP16
Synonyms:	UBP-M; UBPM
Mammalian Cell Selection:	Neomycin
Vector:	pCMV6-Entry (PS100001)
E. coli Selection:	Kanamycin (25 ug/mL)



[View online »](#)

ORF Nucleotide Sequence:

>RC205268 representing NM_001001992
 Red=Cloning site Blue=ORF Green=Tags(s)

TTTTGTAATACGACTCACTATAGGGCGGCCGGGAATTCGTCGACTGGATCCGGTACCGAGGAGATCTGCC
 GCC**CGCATCGCC**

ATGGGAAAGAAACGGACAAAGGGAAAACTGTTCCAATCGATGATTCCTCTGAACTTTAGAACCTGTGT
 GCAGACACATTAGAAAAGGATTGGAACAAGGTAATTTGAAAAAGGCTTTAGTGAATGTGGAATGGAATAT
 CTGCCAAGACTGTAAGACTGACAATAAAGTGAAAGATAAAGCTGAAGAAGAAACAGAAGAAAAGCCTTCA
 GTTTGGCTGTGTCTTAAATGTGGCCATCAGGGCTGTGGCAGAAATTCAGGAGCAGCATGCCTTGAAGC
 ACTATCTGACGCCAAGATCTGAACCTCACTGTCTGGTTCTTAGTTTGGCAACTGGAGTGTATGGTGTTA
 CGTATGTGATAATGAGGTCCAGTATTGTAGTTCAAACCAGTTGGGTCAAGTGGTTGATTATGTCAGAAAA
 CATGCCAGCATTACAACCCAAAGCCAGAGAAAGATAATGGAAATATTGAACTTGAAAAATAAAAAATTAG
 AAAAGAGAGTAAGAATGAACAAGAGAGAGAAAAGAAGGAAAACATGGCTAAAGAGAATCCTCCCATGAA
 TTCTCCTTGCCAAATAACCGTGAAGGACTCAGTAATTTGGGAAACACATGTTTCTCAATGCAGTTATG
 CAGAACTTGTCAAAACACCACTGCTTAGAGAACTACTAAAAGAAGTGAAGTGTCTGGAACAATTTGTA
 AAATTGAACCACCTGATTTGGCATTAAACAGAACATTAGAAATAAACCTTGAGCCTCCAGGCCCTCTTAC
 TTTAGCCATGAGCCAGTTTCTTAATGAGATGCAAGAGACCAAAAAGGGGTTGTGACACCGAAAGAACTC
 TTTTCTCAGGTCTGTAAGAAAGCAGTGCAGTTTAAAGGCTATCAGCAGCAAGACGCCAGGAGCTGCTTC
 GCTACTTATTGGATGGGATGAGAGCAGAAGAACACCAAGAGTGAGTAAAGGAATACTTAAAGCATTGG
 TAATCTACTGAAAAGTTGGATGAAGAACTAAAAATAAAGTTAAAGATTATGAGAAGAAAAATCAATG
 CCAAGTTTGTGACCGCATCTTGGTGGTGAACCTAAGTAGTATGATCATGTGTGATCAATGCAGAACTG
 TCTCCTTGTTTCAATCTTTCCTTGTGTTGTCCTCCAGTTTATGATGATCAGAGGTAAGAAAAAG
 TGTAAATGATAAAAACTGAAAAAGACAGTGGAGGATGAAGATCAAGATAGTGAGGAAGAAAAAGATAAC
 GACAGTTACATAAAGAGAGAAGTGATATTCTTCTGGAACAAGTAAAGCACTTACAGAAAAAGCAAGA
 AACAAAGCAAAAAGCAAGCAAGAACCAACGAAGCAACAAAAAATCAAGGAAAAGTTCTTCAATTTAA
 TGATATTTGACTATTGACCATCTGAAGACAGTATAATGAAGCTGAAATGTCACCTTCAAGGAGAAGTA
 AATATTAATCCAACCATTTTCAAGAGGGTGTATGCATAAAGAATATTGTGTCACACGAGAAGATT
 TGAATGGCAAGCAAAAATGATCGAAAGTGAACCTGACAATCAAAAATCCACAGAGGAAGTAGATATGAA
 AAATATCAACATGGATAATGATCTGGAGGTTTTAACATCTTCTCCCACTAGGAATTTAAATGGTGCCTAC
 CTAAACGGAAGGGAGCAATGGAGAAGTGGACATTTCCAATGGTTTCAAAAACCTAAATTTGAATGCTGCTC
 TTCATCCTGATGAAATAATATAGAGATTCTGAATGATAGTCATACTCCTGGAACAAGGTGTATGAGGT
 TGTAAATGAAGATCCAGAACTGCTTTCTGTACTCTTGCAAACAGGGAAGTTTTCAATACTGATGAGTGT
 TCAATCCAACATTGTTTATATCAGTTTACCCGTAATGAGAACTTCGAGATGCGAATAAACTGCTTTGTG
 AAGTATGCACACGGAGACAGTGTAAATGGACCAAGGCAAAATAAAAAGGTGAAAGGAAGCATGTTTACAC
 CAATGCCAAAAAGCAGATGCTAATTTCTTGTCTCTCTGTTCTTACTTTCATTTAAAGAGATTTTCA
 CAGGCTGGTTTTAACCTACGCAAAGTTAACAAACATAAAGTTTCCGGAATCTTAGATTTGGCTCCTT
 TTTGCACCCTTAAATGTAAGAATGTTGCAGAAGAAAATAACAAGGGTACTCTATTCCTTATATGGAGTTGT
 TGAACACAGTGGTACTATGAGGTGGGGCATTACACTGCCTATGCCAAGGCAAGAACCAGCAAAATAGTCAT
 CTCTAATCTTGTCTTACGGTGATATCCACAAGATTTTGAATGGAATCAAAAAGGCGAGTGGTTTC
 ACATCAGCGACACATGTGCAAGCTGTGCCTACAACCTAAAGTACTAAACTCACAAGCGTACCTCCTATT
 TTATGAGAGAATACTG

ACGCGTACGCGGCCGCTCGAGCAGAACTCATCTCAGAAGAGGATCTGGCAGCAATGATATCCTGGATT
 ACAAGGATGACGACGATAAGGTTTAA

Protein Sequence: >RC205268 representing NM_001001992
Red=Cloning site Green=Tags(s)

MGKKRTKGKTVPIDDSSSETLEPVCRRHIRKGLEQGNLKKALVNVEWNICQDCKTDNKVKDKAEETEETEEKPS
VWLCLKCGHQGCGRNSQEQHALKHYLTPRSEPHCLVLSLDNWSVWCYVCDNEVQYCSSNQLGQVVDYVRK
HASITTPKPEKDNGNIELENKLEKESKNEQEREKKNMAKENPPMNSPCQITVKGLSNLGNTCFFNAVM
QNLSTPVLRELLKEVKMSGTIVKIEPPDLALTEPLEINLEPPGPLTLAMSQFLNEMQETKKGVVTPKEL
FSQVCKKAVRFKGYQQDSQELLRYLLDGMRAEEHQRVSKGILKAFGNSTEKLDEELKNKVKDYEKKSM
PSFVDRIFGGELTSMIMCDQCRTVSLVHESFLDLSPVLDDQSGKKS VNDKNLKKTVEDEDQDSEEEKDN
DSYIKERSDIPSGTSKHLQKKAKKQAKKQAKNQRQKIQGKVLHLNDICTIDHPEDSDNEAEMSLQGEV
NIKSNHISQEGVMHKEYCVNQDLNGQAKMIESVTDNQKSTEEVDMKNINMDNDLEVL TSSPTRNLNGAY
LTEGSNGEVDISNGFKNLNLNAALHPDEINIEILNDSHTPGTKVYEVVNEDPETAFCTLANREVFNTDEC
SIQHCLYQFTRNEKLRDANKLLCEVCTRRQCNGPKANIKGERKHVYTNAKKQMLISLAPPVLT LHLKRFQ
QAGFNLKVNKHIKFPEILDLPFCTLCKNVAEENTRVLYSLYGVVEHSGTMRSGHYTA YAKARTANSH
LSNLVLHGDI PQDFEMESKGQWFHISDTHVQAVPTTKVLNSQAYLLFYERIL

TRTRPLEQKLISEEDLAANDILDYKDDDDKV

Chromatograms: https://cdn.origene.com/chromatograms/mg2877_d09.zip

Restriction Sites: Sgfl-Mlul

Cloning Scheme:


ACCN: NM_001001992

ORF Size: 2466 bp

OTI Disclaimer: The molecular sequence of this clone aligns with the gene accession number as a point of reference only. However, individual transcript sequences of the same gene can differ through naturally occurring variations (e.g. polymorphisms), each with its own valid existence. This clone is substantially in agreement with the reference, but a complete review of all prevailing variants is recommended prior to use. [More info](#)

OTI Annotation: This clone was engineered to express the complete ORF with an expression tag. Expression varies depending on the nature of the gene.

Components: The ORF clone is ion-exchange column purified and shipped in a 2D barcoded Matrix tube containing 10ug of transfection-ready, dried plasmid DNA (reconstitute with 100 ul of water).

Reconstitution Method:

1. Centrifuge at 5,000xg for 5min.
2. Carefully open the tube and add 100ul of sterile water to dissolve the DNA.
3. Close the tube and incubate for 10 minutes at room temperature.
4. Briefly vortex the tube and then do a quick spin (less than 5000xg) to concentrate the liquid at the bottom.
5. Store the suspended plasmid at -20°C. The DNA is stable for at least one year from date of shipping when stored at -20°C.

RefSeq: [NM_001001992.1](#), [NP_001001992.1](#)

RefSeq Size: 2986 bp

RefSeq ORF: 2469 bp

Locus ID: 10600

UniProt ID: [Q9Y5T5](#)

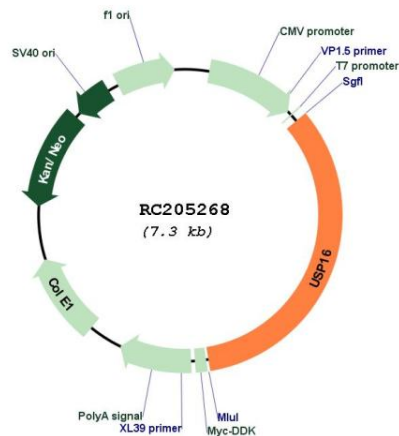
Cytogenetics: 21q21.3

Protein Families: Protease

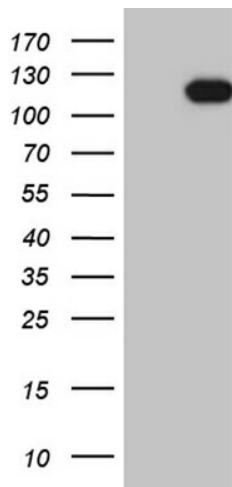
MW: 93.3 kDa

Gene Summary: This gene encodes a deubiquitinating enzyme that is phosphorylated at the onset of mitosis and then dephosphorylated at the metaphase/anaphase transition. It can deubiquitinate H2A, one of two major ubiquitinated proteins of chromatin, in vitro and a mutant form of the protein was shown to block cell division. Alternate transcriptional splice variants, encoding different isoforms, have been characterized. [provided by RefSeq, Jul 2008]

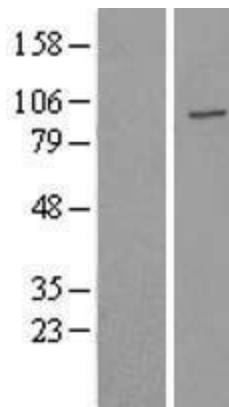
Product images:



Circular map for RC205268



HEK293T cells were transfected with the pCMV6-ENTRY control (Cat# [PS100001], Left lane) or pCMV6-ENTRY USP16 (Cat# RC205268, Right lane) cDNA for 48 hrs and lysed. Equivalent amounts of cell lysates (5 ug per lane) were separated by SDS-PAGE and immunoblotted with anti-USP16 (Cat# [TA809358])(1:2000). Positive lysates [LY424308] (100ug) and [LC424308] (20ug) can be purchased separately from OriGene.



Western blot validation of overexpression lysate (Cat# [LY424308]) using anti-DDK antibody (Cat# [TA50011-100]). Left: Cell lysates from untransfected HEK293T cells; Right: Cell lysates from HEK293T cells transfected with RC205268 using transfection reagent MegaTran 2.0 (Cat# [TT210002]).