

## Product datasheet for **RC205265**

### ME3 (NM\_001014811) Human Tagged ORF Clone

#### Product data:

Product Type:	Expression Plasmids
Product Name:	ME3 (NM_001014811) Human Tagged ORF Clone
Tag:	Myc-DDK
Symbol:	ME3
Synonyms:	NADP-ME
Mammalian Cell Selection:	Neomycin
Vector:	pCMV6-Entry (PS100001)
E. coli Selection:	Kanamycin (25 ug/mL)



[View online »](#)

**ORF Nucleotide Sequence:**

>RC205265 ORF sequence  
 Red=Cloning site Blue=ORF Green=Tags(s)

TTTTGTAATACGACTCACTATAGGGCGGCCGGGAATTCGTCGACTGGATCCGGTACCGAGGAGATCTGCC  
 GCC**GCGATCGCC**

ATGGGTGCCGCGCTGGGACAGGCACGCGCTGGCTCCCTGGCCGGCCGGCCCTGCGGCGCCCTCCCGC  
 GCTGGACACCCACGCGCCCGCCCAAGGCTGCCACTCCAAGCCTGGCCCGCGCGCCCTGTGCCCTGAA  
 GAAGCGCGGATACGATGTACCAGGAACCTCATCTCAACAAGGGGATGGCCTTTACCCTTGAAGAAAGG  
 CTGCGACTTGAATCCACGGCCTAATCCCGCCCTGCTTTCTGGCCAGGACGTCCAGCTCCTCCGAATCA  
 TGGGATATTACGAGCGGCAGCAGAGTGACCTGGACAAGTACATCATTCTCATGACTCCAAGACCGGAA  
 CGAGAAGCTTTCTACCGAGTGTGACTTCGGATGTGGAGAAGTTCATGCCAATCGTGTACACGCCTACC  
 GTGGGGCTGGCCTGTGAGCACTATGGCCTGACTTCCGCGAGCCCGTGGACTGTTTCATCACCATTTCATG  
 ACAAAGGTCATCTTGAACAATGCTGAATTCTTGGCCAGAAGACAATATTAAGGCCGTGGTGGTACTGA  
 TGGGGAGCGCATCTGGGCTGGGAGACCTGGGCTGCTACGGCATGGGCATCCCTGTGGCAAGCTGGCC  
 CTGTACACGGCATGCGGAGGGGTGAACCCGAGCAGTGCCTCCCTGTGCTGCTGGACGTCCGCACCAACA  
 ATGAGGAGCTGCTCAGAGACCCTCTGTACATCGGCCTGAAACACCAGCGGTGCACGGGAAGGCATACGA  
 TGACTTGTGATGAGTTCATGCAGGCTGTGACAGACAAGTTTGGATAAATTGCCTCATCCAATTTGAA  
 GACTTCGCAATGCCAATGCCTTCCGCCTGCTCAACAAATACCGTAACAAGTACTGCATGTTCAATGATG  
 ACATCCAAGGCACAGCCTCCGTTGCTGTGGCAGGGATCTTGGCTGCTCTGCGAATACCAACAACAAGCT  
 TTCCAATCACGTGTTGTTTTCAAGGTGCAGGCGAGGCAGCTATGGGCATTGCCACCTCCTTGTTCATG  
 GCCCTAGAGAAAGAAGGTGTACCGAAGGCAGAGCCACAAGAAAGATCTGGATGGTGGACTCTAAGGGC  
 TCATTGTCAAGGGGAGGACCCACTGAACCATGAAAAGGAGATGTTTGCCCAAGACCATCTGAAGTCAA  
 CTCCTTGAGGAGGTGGTGGGCTGGTGAAGCCACAGCCATCATAGGTGTTGCTGCCATCGCAGGAGCC  
 TTCACGGAGCAGATTCTGAGGGACATGGCCTCCTTCCACGAGCGCCATCATCTTTGCCCTGAGCAACC  
 CCACCAGCAAGGCCGAGTGCACGGCTGAGAAGTGTACCGGGTACCGAGGGCCGAGGGATTTTGGCAG  
 TGGAAAGTCTTTAAGAGTGTGACTCTGGAAGATGGCAAGACCTTATTCTGGGAGGAAACAATGCT  
 TACGTGTTCCCGGGGTGGCACTGGGAGTATCGCCGGCGGGATCCGGCACATCCAGATGAGATCTTCC  
 TCCTGACAGCAGACAAATTGCCAGGAAGTCTCTGAGCAGCATCTGTCCAGGGGAGACTATCCACC  
 ACTCAGCACCATCCGAGACGTGCTTTGAGAATTGCCATCAAAGTCTCGACTACCGGTACAACACAAC  
 CTGGCTTCTACTACCCAGAGCCTAAGGACAAGGAGGCTTTTGTAAAGATCCCTGGTCTACTCTCCAGACT  
 ATGACTCCTTTACTGAGCAGTACACTTGGCCCAAGGAAGCCATGAATGTTTCAGACGGTC

AG**GCGACCG**ACGCGTACGCGGCCGCTCGAGCAGAAACTCATCTCAGAAGAGGATCTGGCAGCAAATGATATCC  
 TGGATTACAAGGATGACGACGATAAGGTTTAA

**Protein Sequence:**

>RC205265 protein sequence  
 Red=Cloning site Green=Tags(s)

MGAALGTGTRLAPWPGRACGALPRWPTAPAQGCCHSKPGPARPVPLKRGYDVTRNPHLNKGMAFTLEER  
 LQLGIHGLIPPCFLGQDVQLLRIMGYERQQSDLDKYIILMTLQDRNEKLFYRVL TSDVEKFMPIVYPT  
 VGLACQHYGLTFRRPRGLFITIHDKGHLATMLNSWPEDNIKAVVVDGERILGLDLGCGYGMGIPVGKLA  
 LYTACGGVNPQQCLPVLLDVGTNNEELLRDPLYIGLKHQRVHGKAYDDLDEFMQAVTDKFGINCLIQFE  
 DFANANAFRLLNKYRNKCYMFNDDIQGTASVAVAGILAALRITNNKLSNHVVFVQGAGEAAMGIAHLLVM  
 ALEKEGVPKAEATRKIWMVDSKGLIVKGRSHLNHEKEMFAQDHPEVNSLEEVVRLVKPTAIGVAAIAGA  
 FTEQILRDMASFHERPIIFALSNTSKAECTAEKCYRVTEGRGIFASGSPFKSVTLEDGKTFIPGQGNNA  
 YVFPVALGVIAGGIRHIPDEIFLLTAEQIAQEVSEQHL SQGRLYPPLSTIRDVSLRIAIVKLDYAYKHN  
 LASYYPEPKDKEAFVRSLVYTPDYDSFTLDSYWPKEAMNVQTV

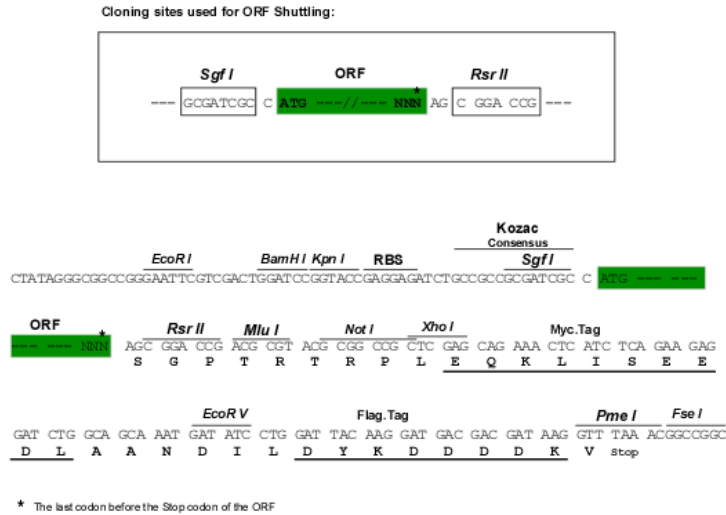
SGP**TRTRPLEQKLI**SEEDLAANDILDYKDDDDKV

**Chromatograms:**

[https://cdn.origene.com/chromatograms/mk6190\\_c03.zip](https://cdn.origene.com/chromatograms/mk6190_c03.zip)

Restriction Sites: SgfI-RsrII

Cloning Scheme:



ACCN: NM\_001014811

ORF Size: 1812 bp

OTI Disclaimer: The molecular sequence of this clone aligns with the gene accession number as a point of reference only. However, individual transcript sequences of the same gene can differ through naturally occurring variations (e.g. polymorphisms), each with its own valid existence. This clone is substantially in agreement with the reference, but a complete review of all prevailing variants is recommended prior to use. [More info](#)

OTI Annotation: This clone was engineered to express the complete ORF with an expression tag. Expression varies depending on the nature of the gene.

Components: The ORF clone is ion-exchange column purified and shipped in a 2D barcoded Matrix tube containing 10ug of transfection-ready, dried plasmid DNA (reconstitute with 100 ul of water).

Reconstitution Method:

1. Centrifuge at 5,000xg for 5min.
2. Carefully open the tube and add 100ul of sterile water to dissolve the DNA.
3. Close the tube and incubate for 10 minutes at room temperature.
4. Briefly vortex the tube and then do a quick spin (less than 5000xg) to concentrate the liquid at the bottom.
5. Store the suspended plasmid at -20°C. The DNA is stable for at least one year from date of shipping when stored at -20°C.

RefSeq: [NM\\_001014811.1](#), [NP\\_001014811.1](#)

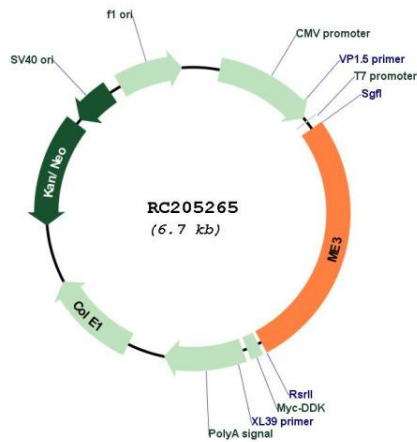
RefSeq Size: 2242 bp

RefSeq ORF: 1815 bp

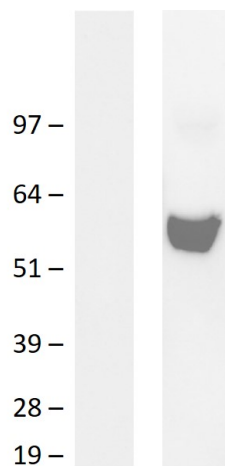
Locus ID: 10873

**UniProt ID:** [Q16798](#)  
**Cytogenetics:** 11q14.2  
**Protein Pathways:** Metabolic pathways, Pyruvate metabolism  
**MW:** 66.9 kDa  
**Gene Summary:** Malic enzyme catalyzes the oxidative decarboxylation of malate to pyruvate using either NAD<sup>+</sup> or NADP<sup>+</sup> as a cofactor. Mammalian tissues contain 3 distinct isoforms of malic enzyme: a cytosolic NADP(+)-dependent isoform, a mitochondrial NADP(+)-dependent isoform, and a mitochondrial NAD(+)-dependent isoform. This gene encodes a mitochondrial NADP(+)-dependent isoform. Multiple alternatively spliced transcript variants have been found for this gene, but the biological validity of some variants has not been determined. [provided by RefSeq, Jul 2008]

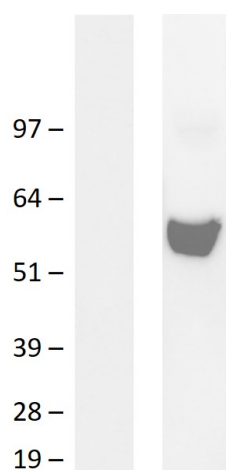
### Product images:



Circular map for RC205265



Western blot validation of overexpression lysate (Cat# [LY423083]) using anti-DDK antibody (Cat# [TA50011-100]). Left: Cell lysates from untransfected HEK293T cells; Right: Cell lysates from HEK293T cells transfected with RC205265 using transfection reagent MegaTran 2.0 (Cat# [TT210002]).



Western blot validation of overexpression lysate (Cat# [LY423083]) using an anti-DDK antibody (Cat# [TA50011-100]). Left: Cell lysates from untransfected HEK293T cells; Right: Cell lysates from HEK293T cells transfected with RC205265 using transfection reagent PEI